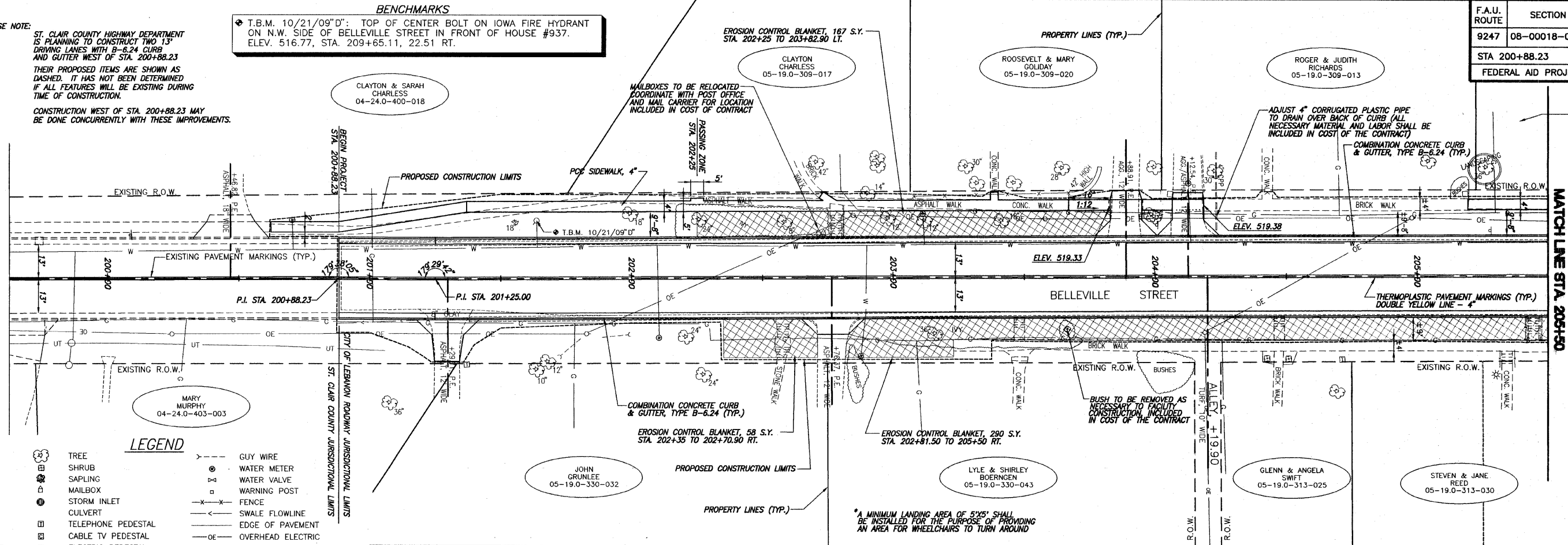


PLEASE NOTE:
 ST. CLAIR COUNTY HIGHWAY DEPARTMENT IS PLANNING TO CONSTRUCT TWO 13" DRIVING LANES WITH B-6.24 CURB AND GUTTER WEST OF STA. 200+88.23. THEIR PROPOSED ITEMS ARE SHOWN AS DASHED. IT HAS NOT BEEN DETERMINED IF ALL FEATURES WILL BE EXISTING DURING TIME OF CONSTRUCTION. CONSTRUCTION WEST OF STA. 200+88.23 MAY BE DONE CONCURRENTLY WITH THESE IMPROVEMENTS.

BENCHMARKS
 T.B.M. 10/21/09"D": TOP OF CENTER BOLT ON IOWA FIRE HYDRANT ON N.W. SIDE OF BELLEVILLE STREET IN FRONT OF HOUSE #937. ELEV. 516.77, STA. 209+65.11, 22.51 RT.

F.A.U. ROUTE	SECTION	COUNTY	TOTAL SHEETS	SHEET NUMBER
9247	08-00018-00-PV	ST. CLAIR	19	6
STA 200+88.23		TO	STA. 215+72.98	
FEDERAL AID PROJECT		CONTRACT 97454		



LEGEND

	TREE		GUY WIRE
	SHRUB		WATER METER
	SAPLING		WATER VALVE
	MAILBOX		WARNING POST
	STORM INLET		FENCE
	CULVERT		SWALE FLOWLINE
	TELEPHONE PEDESTAL		EDGE OF PAVEMENT
	CABLE TV PEDESTAL		OVERHEAD ELECTRIC
	ELECTRIC PEDESTAL		UNDERGROUND ELECTRIC
	GAS VALVE		UNDERGROUND FIBER OPTIC
	SIGN		UNDERGROUND TELEPHONE
	STREET SIGN		UNDERGROUND GAS MAIN
	ROADWAY/TRAFFIC SIGN		WATER MAIN
	POWER POLE		SANITARY SEWER
	PROPOSED STORM INLET		PROPOSED STORM SEWER

