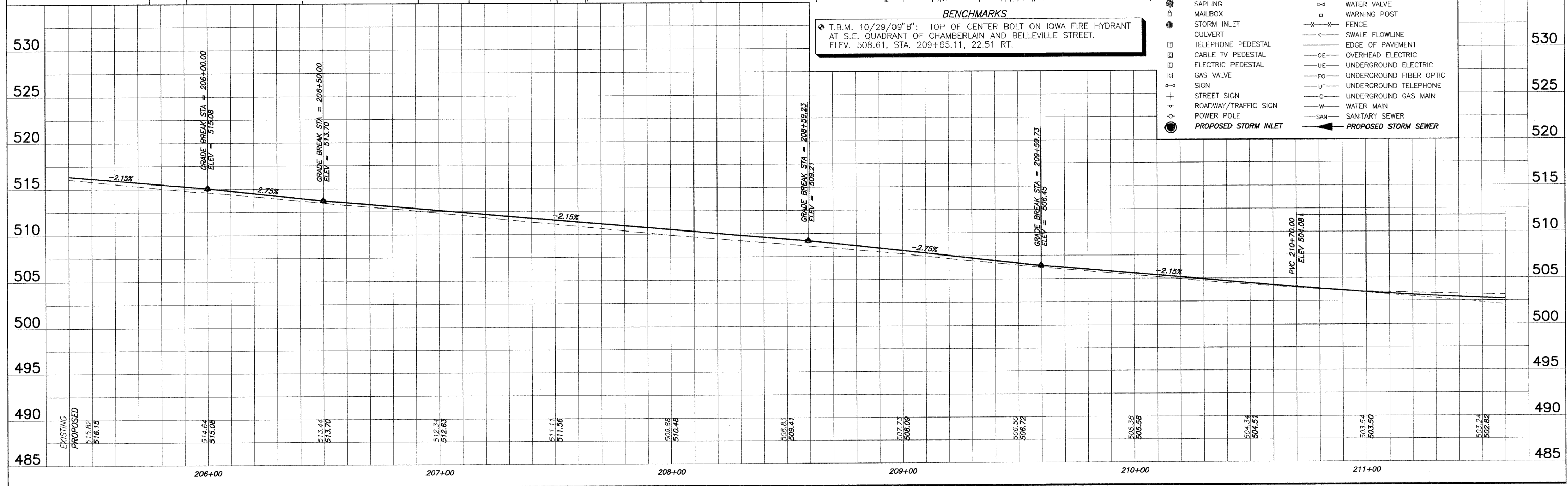
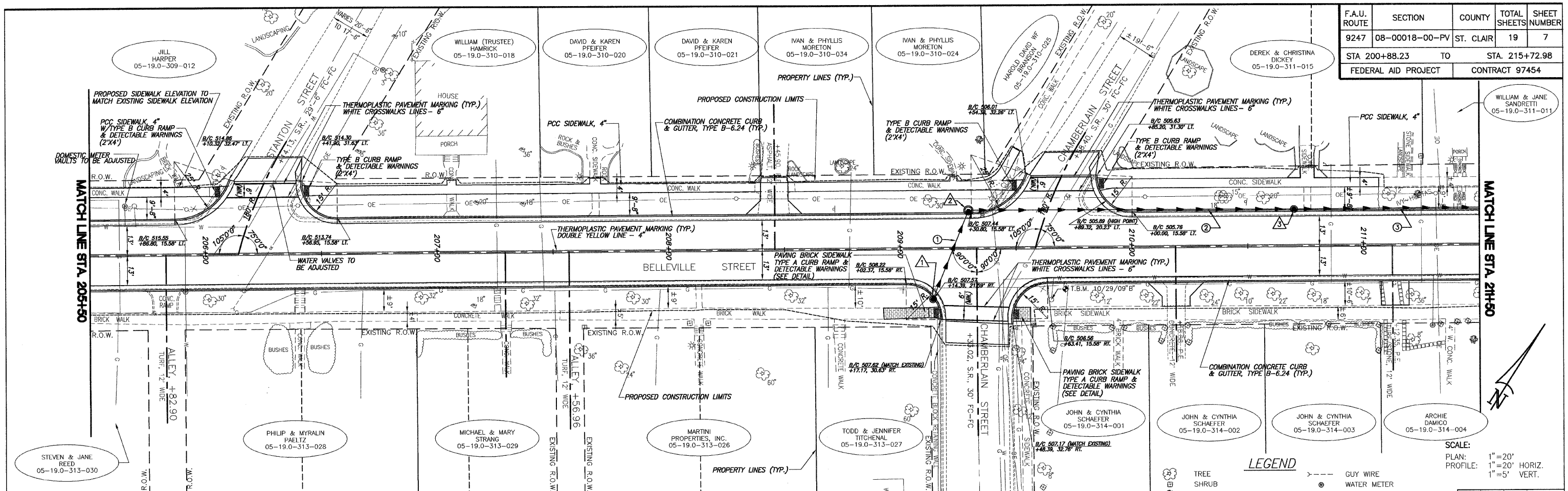


F.A.U. ROUTE	SECTION	COUNTY	TOTAL SHEETS	SHEET NUMBER
9247	08-00018-00-PV	ST. CLAIR	19	7
STA 200+88.23 TO STA. 215+72.98		FEDERAL AID PROJECT CONTRACT 97454		



**LEGEND**

	TREE		GUY WIRE
	SHRUB		WATER METER
	SAPLING		WATER VALVE
	MAILBOX		WARNING POST
	STORM INLET		FENCE
	CULVERT		SWALE FLOWLINE
	TELEPHONE PEDESTAL		EDGE OF PAVEMENT
	CABLE TV PEDESTAL		OVERHEAD ELECTRIC
	ELECTRIC PEDESTAL		UNDERGROUND ELECTRIC
	GAS VALVE		UNDERGROUND FIBER OPTIC
	SIGN		UNDERGROUND TELEPHONE
	STREET SIGN		UNDERGROUND GAS MAIN
	ROADWAY/TRAFFIC SIGN		WATER MAIN
	POWER POLE		SANITARY SEWER
	PROPOSED STORM INLET		PROPOSED STORM SEWER

**BENCHMARKS**  
 T.B.M. 10/29/09" B": TOP OF CENTER BOLT ON IOWA FIRE HYDRANT AT S.E. QUADRANT OF CHAMBERLAIN AND BELLEVILLE STREET. ELEV. 508.61, STA. 209+65.11, 22.51 RT.