

F.A.U. ROUTE	SECTION	COUNTY	TOTAL SHEETS	SHEET NUMBER
9247	08-00018-00-PV	ST. CLAIR	19	10
STA 200+88.23 TO STA. 215+72.98				
FEDERAL AID PROJECT			CONTRACT 97454	

MAINTENANCE OF TRAFFIC & GENERAL NOTES

GENERAL
 THE CONTRACTOR SHALL USE TYPE III BARRICADES WITH FLASHING LIGHTS AND SIGNS "ROAD CLOSED" (R11-2) AT ALL CLOSURE POINTS. "ROAD CONSTRUCTION AHEAD" (W20-1(O)) AND "ROAD CLOSED AHEAD" (W20-3(O)) WARNING SIGNS WITH FLASHING LIGHTS SHALL BE PLACED IN PERFORMANCE WITH STANDARD BLR 22-6 AND AS DIRECTED BY THE ENGINEER TO ACCOMMODATE FIELD CONDITIONS. INITIAL WARNING SIGNS ON IL. ROUTE 4 AND US ROUTE 50 SHALL HAVE FLASHING LIGHTS.

IT IS ANTICIPATED THAT CONSTRUCTION ON THE ADJACENT SEGMENT OF BELLEVILLE STREET BETWEEN US ROUTE 50 AND STA. 200+88.23 WILL BE TAKING PLACE CONCURRENTLY WITH THIS PROJECT. THE CONTRACTOR SHALL COORDINATE WITH THE CONTRACTOR OF THAT PROJECT TO ENSURE ALL PROPERTIES ARE ACCESSIBLE ALONG THE ENTIRE LENGTH OF BELLEVILLE STREET FOR THE DURATION OF CONSTRUCTION.

STAGE I
 BELLEVILLE STREET MAY BE CLOSED TO THRU TRAFFIC FOR CONSTRUCTION FROM STA. 200+88.23 TO STANTON STREET. HOWEVER, BELLEVILLE STREET SHALL REMAIN OPEN FOR THIS STAGE IF CONCURRENT WORK CLOSURES BELLEVILLE STREET FROM US 50 TO MARANIDA STREET. COORDINATION BETWEEN CONTRACTORS WILL BE REQUIRED TO ENSURE LOCAL TRAFFIC HAS ACCESS TO THE LOCUST HILLS GOLF COURSE AND ALL OTHER PROPERTIES ALONG BELLEVILLE STREET.

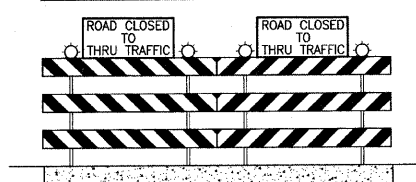
STAGE II
 BELLEVILLE STREET MAY BE CLOSED TO THRU TRAFFIC FOR CONSTRUCTION FROM STANTON STREET TO ST. LOUIS STREET. THE CONTRACTOR SHALL MAKE PROVISIONS TO MAINTAIN ACCESS TO PRIVATE PROPERTIES AND DRIVEWAYS WITHIN THIS STAGE. WHILE CONSTRUCTION IS BEING COMPLETED ON DRIVEWAYS ACCESS SHALL NOT BE DENIED FOR MORE THAN 7 CONTINUOUS DAYS, DURING CONSTRUCTION OF THE DRIVEWAY ENTRANCE, CURB AND GUTTER OR SIDEWALK.

DURING CONSTRUCTION OF THIS STAGE IT WILL BE NECESSARY TO DETOUR LOCAL TRAFFIC USING ST. LOUIS STREET AND STANTON STREET USING A MARKED DETOUR ROUTE. STAGE I WORK SHALL EITHER BE COMPLETED BEFORE WORK ON THIS STAGE CAN BEGIN.

PAYMENT
 AGGREGATE FOR TEMPORARY ACCESS WILL BE MEASURED AND PAID FOR PER THE CONTRACT UNIT PRICE PER TON. ALL OTHER WORK DESCRIBED HEREIN SHALL BE INCLUDED IN THE CONTRACT LUMP SUM PRICE FOR TRAFFIC CONTROL AND PROTECTION.

AREA OF IMPROVEMENTS - 

TYPE III BARRICADE (ROAD CLOSED TO THRU TRAFFIC)



TYPE III BARRICADES WITH STANDARD SIGN R11-4(O)-6030 MOUNTED AS SHOWN. PLACED AT THE LOCATIONS AS SHOWN.

NOT TO SCALE

