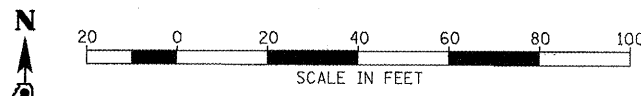


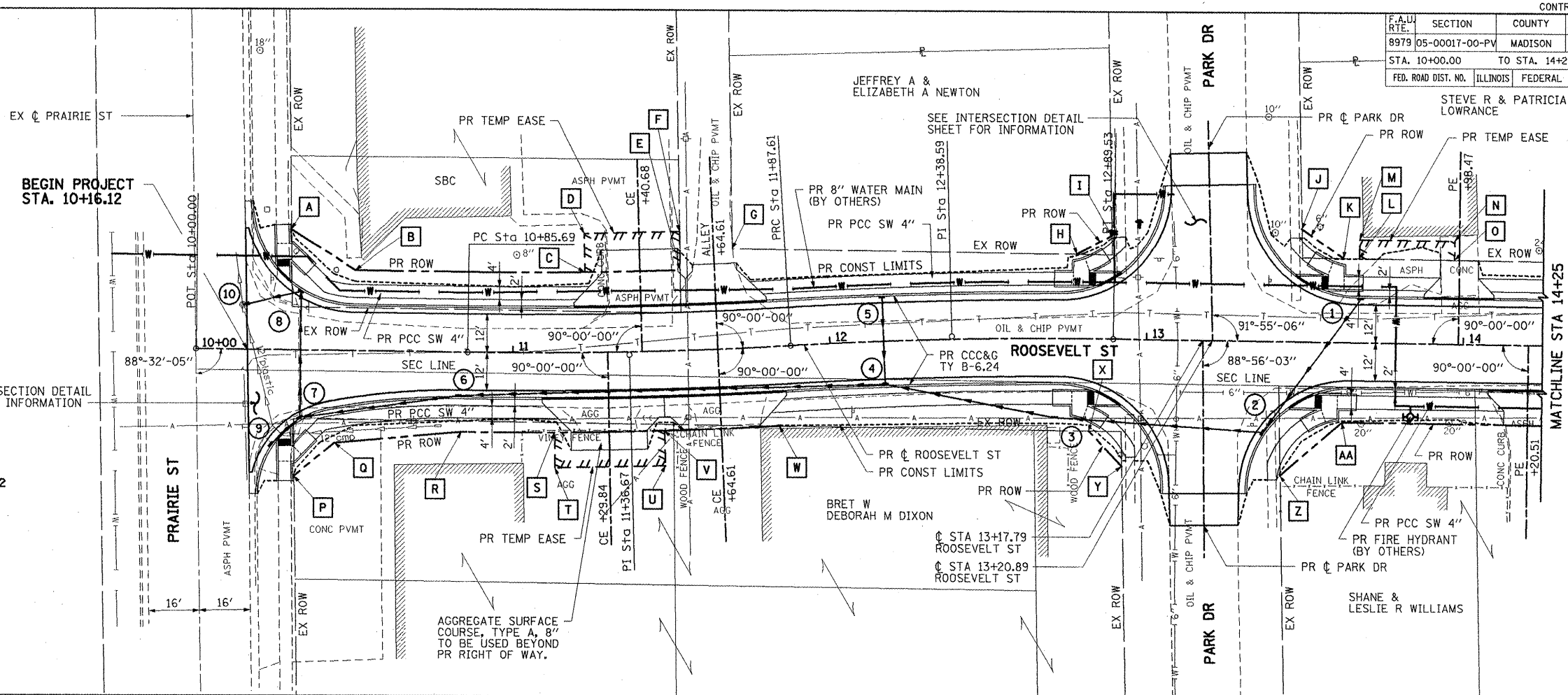
F.A.U. RTE.	SECTION	COUNTY	TOTAL SHEETS	SHEET NO.
8979	05-00017-00-PV	MADISON	37	8
STA. 10+00.00		TO STA. 14+25.00		
FED. ROAD DIST. NO.		ILLINOIS FEDERAL AID PROJECT		



PLAN	DATE	BY

PROP. CURVE ROOSEVELT-1  
 PI STA. = 11+36.67  
 $\Delta = 4^\circ 10' 16''$  (LT)  
 $D = 4^\circ 05' 33''$   
 $R = 1,400.00'$   
 $T = 50.98'$   
 $L = 101.92'$   
 $E = 0.93'$   
 $e = NC$   
 T.R. = NA  
 S.E. RUN = NA  
 P.C. STA = 10+85.69  
 P.R.C. STA = 11+87.61

PROP. CURVE ROOSEVELT-2  
 PI STA. = 12+38.59  
 $\Delta = 4^\circ 10' 16''$  (RT)  
 $D = 4^\circ 05' 33''$   
 $R = 1,400.00'$   
 $T = 50.98'$   
 $L = 101.92'$   
 $E = 0.93'$   
 $e = NC$   
 T.R. = NA  
 S.E. RUN = NA  
 P.R.C. STA = 11+87.61  
 P.T. STA = 12+89.53

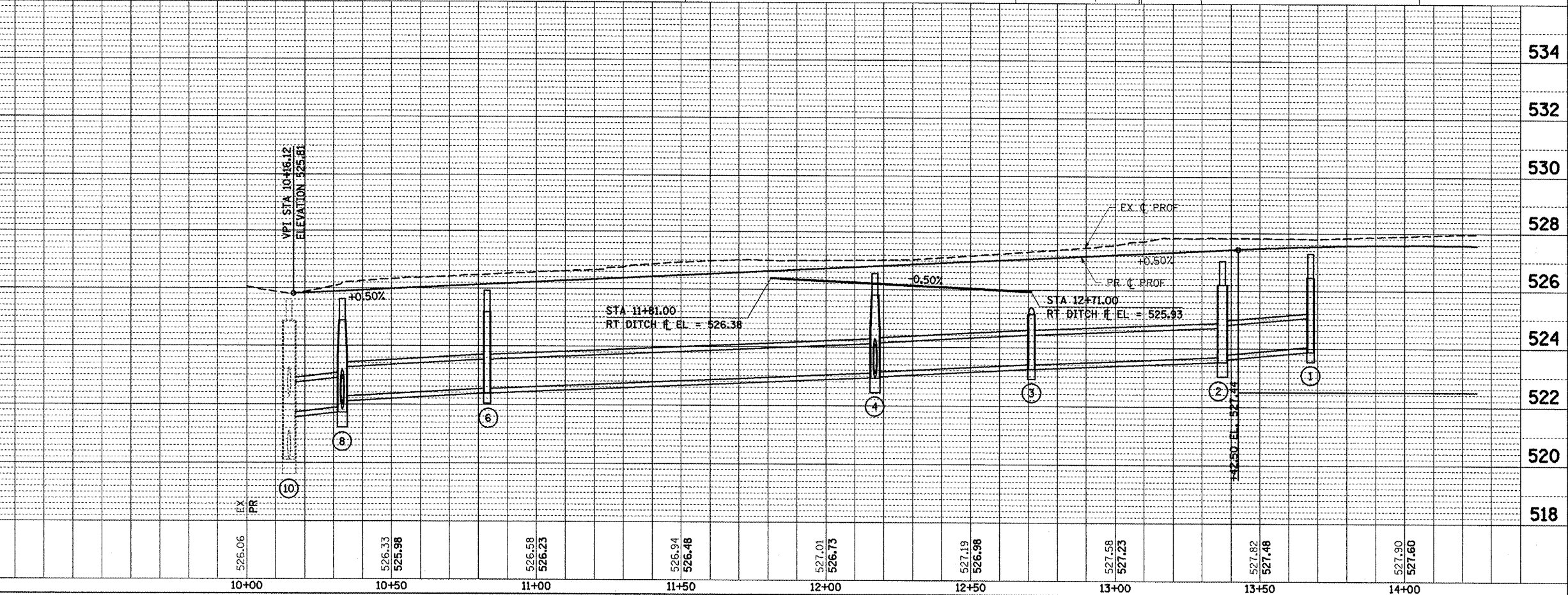


SEE INTERSECTION DETAIL SHEET FOR INFORMATION

AGGREGATE SURFACE COURSE, TYPE A, B TO BE USED BEYOND PR RIGHT OF WAY.

PROFILE	DATE	BY

ROW AND EASE LOC	STATION	OFFSET
A	10+29.66	37.50' LT
B	10+50.00	25.00' LT
C	11+23.00	25.00' LT
D	11+23.00	37.00' LT
E	11+53.63	25.00' LT
F	11+53.87	37.00' LT
G	11+70.68	30.89' LT
H	12+78.00	26.05' LT
I	12+88.78	32.00' LT
J	13+48.70	35.00' LT
K	13+62.00	26.00' LT
L	13+67.00	26.00' LT
M	13+67.00	32.00' LT
N	13+97.00	32.00' LT
O	13+97.00	26.00' LT
P	10+31.35	39.50' RT
Q	10+44.00	29.00' RT
R	10+84.00	25.00' RT
S	11+13.00	25.00' RT
T	11+13.00	36.00' RT
U	11+47.00	36.00' RT
V	11+47.00	25.00' RT
W	11+82.66	25.00' RT
X	12+82.00	28.98' RT
Y	12+92.64	40.00' RT
Z	13+42.71	42.00' RT
AA	13+62.00	25.00' RT



PLOT DATE = 1/31/2011  
 FILE NAME = I:\boston\05-00017-00-pv\sheet\phase 1\086\_P&P\_081.dgn  
 SCALE = 1"=40'  
 USER NAME = rony@harsco.com

PLAN & PROFILE: ROOSEVELT STREET - STA 10+00.00 TO STA 14+25.00