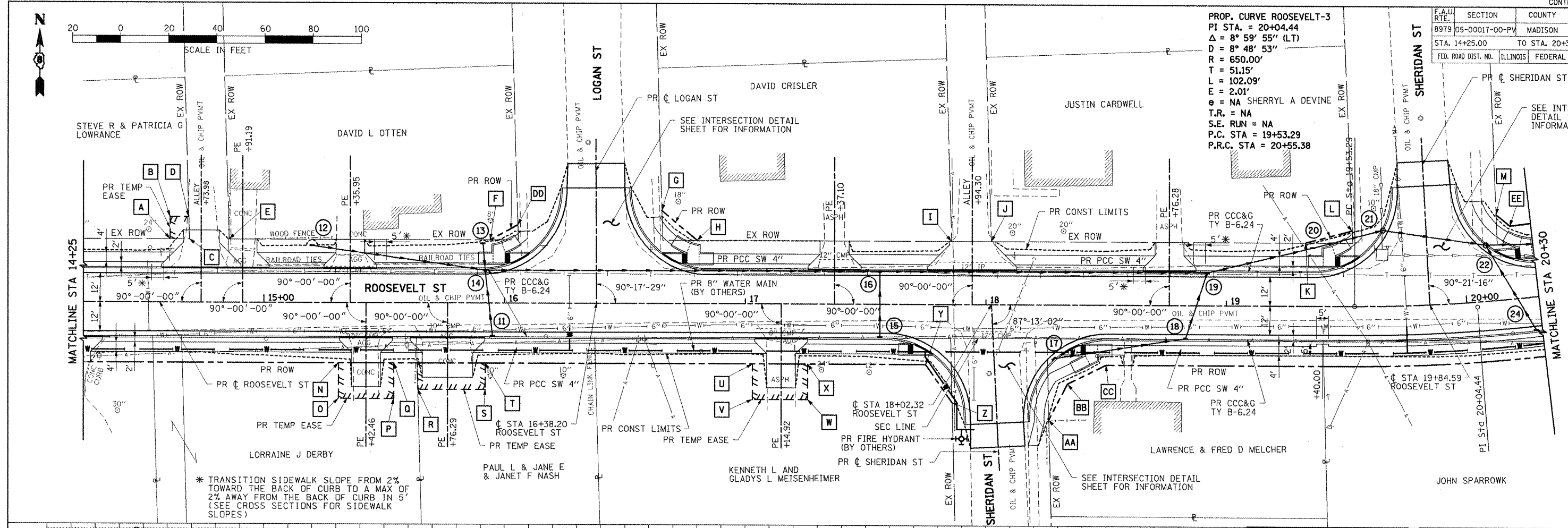
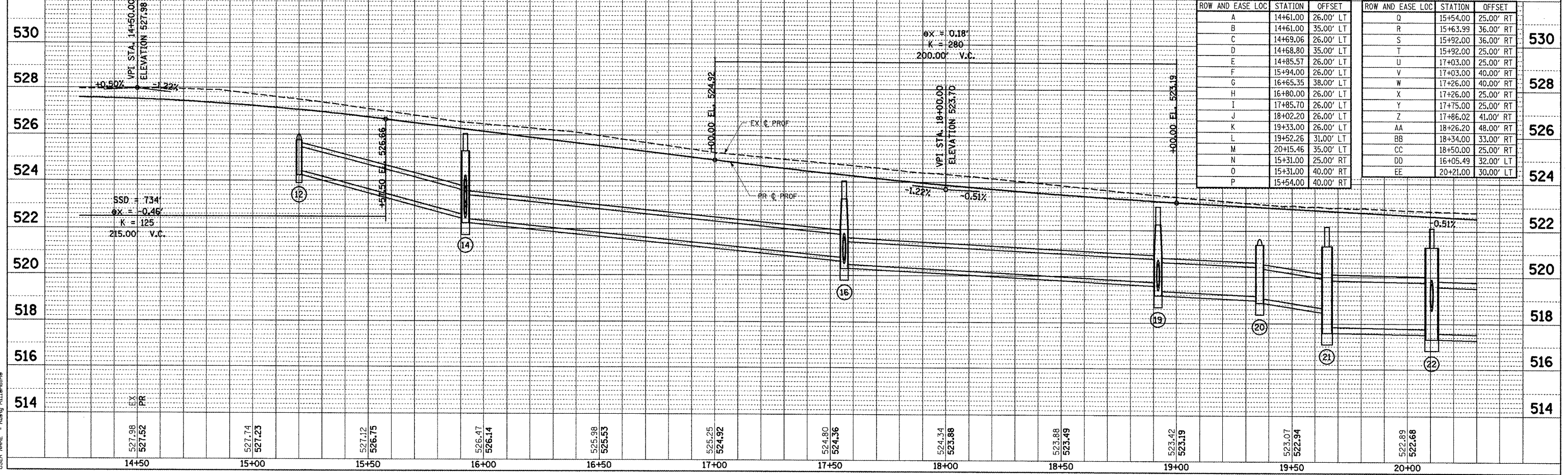


F.A.U. RTE.	SECTION	COUNTY	TOTAL SHEETS	SHEET NO.
8979	05-00017-00-PV	MADISON	37	9
STA. 14+25.00		TO STA. 20+30.00		
FED. ROAD DIST. NO.	ILLINOIS	FEDERAL AID PROJECT		

PROP. CURVE ROOSEVELT-3
 PI STA. = 20+04.44
 $\Delta = 8^\circ 59' 55''$ (LT)
 $D = 8^\circ 48' 53''$
 $R = 650.00'$
 $T = 51.15'$
 $L = 102.09'$
 $E = 2.01'$
 $\theta = NA$ SHERRYL A DEVINE
 $T.R. = NA$
 $S.E. RUN = NA$
 $P.C. STA = 19+53.29$
 $P.R.C. STA = 20+55.38$



* TRANSITION SIDEWALK SLOPE FROM 2% TOWARD THE BACK OF CURB TO A MAX OF 2% AWAY FROM THE BACK OF CURB IN 5' (SEE CROSS SECTIONS FOR SIDEWALK SLOPES)



ROW AND EASE LOC	STATION	OFFSET	ROW AND EASE LOC	STATION	OFFSET
A	14+61.00	26.00' LT	Q	15+54.00	25.00' RT
B	14+61.00	35.00' LT	R	15+63.99	36.00' RT
C	14+69.06	26.00' LT	S	15+92.00	36.00' RT
D	14+68.80	35.00' LT	T	15+92.00	25.00' RT
E	14+85.57	26.00' LT	U	17+03.00	25.00' RT
F	15+94.00	26.00' LT	V	17+03.00	40.00' RT
G	16+65.35	38.00' LT	W	17+26.00	40.00' RT
H	16+80.00	26.00' LT	X	17+26.00	25.00' RT
I	17+85.70	26.00' LT	Y	17+75.00	25.00' RT
J	18+02.20	26.00' LT	Z	17+86.02	41.00' RT
K	19+33.00	26.00' LT	AA	18+26.20	48.00' RT
L	19+52.26	31.00' LT	BB	18+34.00	33.00' RT
M	20+15.46	35.00' LT	CC	18+50.00	25.00' RT
N	15+31.00	25.00' RT	DD	16+05.49	32.00' LT
O	15+31.00	40.00' RT	EE	20+21.00	30.00' LT
P	15+54.00	40.00' RT			

PLAN	DATE
BY	
CHECKED	
DATE	

PROFILE	DATE
BY	
CHECKED	
DATE	

1/27/2011
 I:\Projects\0546803\Draw\Sheets\Sheet 1\089_P&P_082.dgn
 42.853 / IN.
 Rungy Kullerboe

PLAN & PROFILE: ROOSEVELT STREET - STA 14+25.00 TO STA 20+30.00