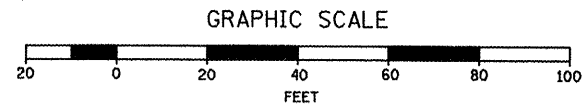
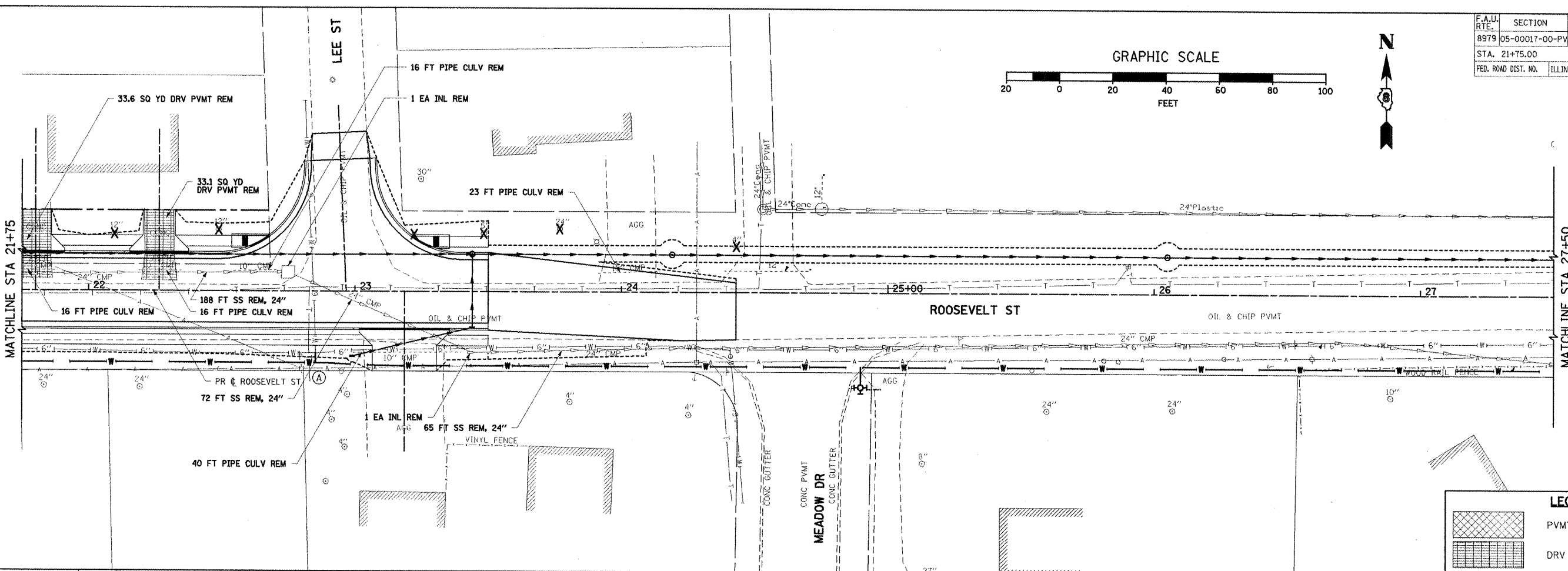
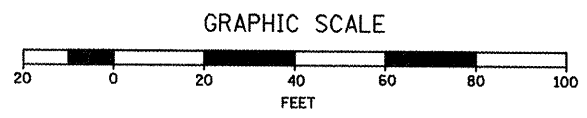
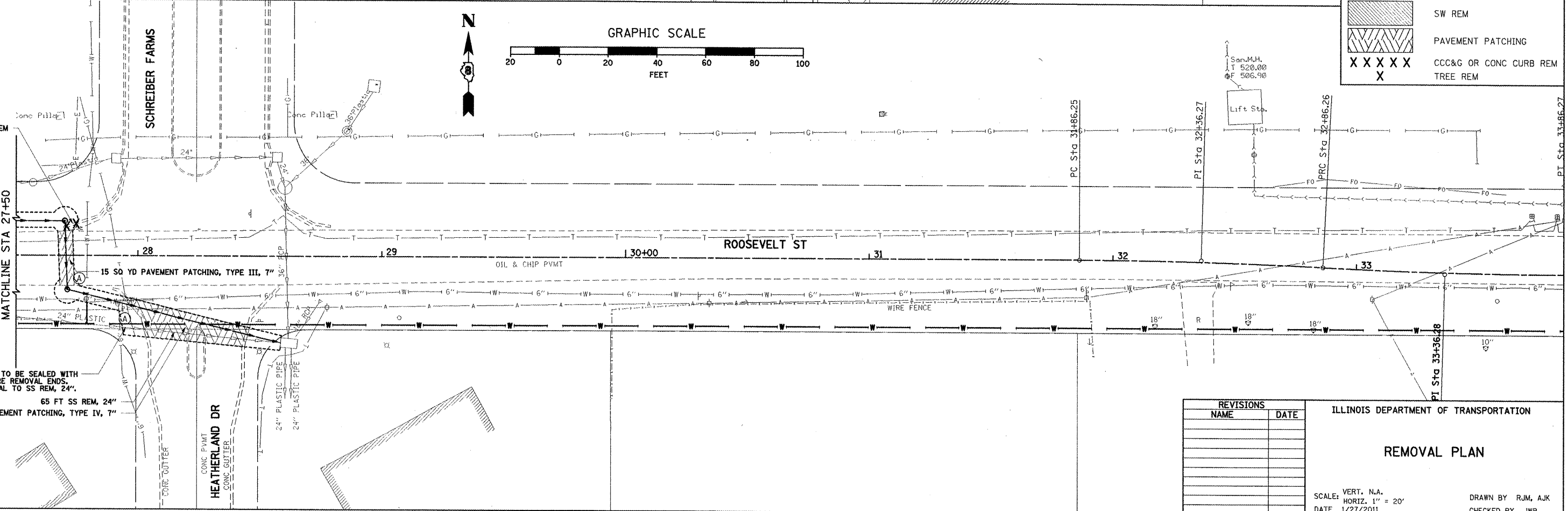


F.A.U. RTE.	SECTION	COUNTY	TOTAL SHEETS	SHEET NO.
8979	05-00017-00-PV	MADISON	37	28
STA. 21+75.00		TO STA. 33+50.00		
FED. ROAD DIST. NO.	ILLINOIS	FEDERAL AID PROJECT		



**LEGEND**

[Cross-hatch pattern]	PVMT REM
[Horizontal lines pattern]	DRV PVMT REM
[Vertical lines pattern]	SW REM
[Diagonal lines pattern]	PAVEMENT PATCHING
[X X X X pattern]	CCC&G OR CONC CURB REM
[X pattern]	TREE REM



EXISTING PIPE TO BE SEALED WITH CONCRETE WHERE REMOVAL ENDS COST INCIDENTAL TO SS REM, 24"

65 FT SS REM, 24"

57 SQ YD PAVEMENT PATCHING, TYPE IV, 7"

**REVISIONS**

NAME	DATE

ILLINOIS DEPARTMENT OF TRANSPORTATION

**REMOVAL PLAN**

SCALE: VERT. N.A.  
HORIZ. 1" = 20'  
DATE 1/27/2011

DRAWN BY RJM, AJK  
CHECKED BY JWB

PLOT DATE = 1/27/2011  
 FILE NAME = I:\A\8546803\Drawings\plans\1028.REM.M22.dgn  
 PLOT SCALE = 42.353 / IN.  
 USER NAME = Rusty Mollenbrin

REMOVAL PLAN: ROOSEVELT STREET - STA. 21+75.00 TO STA. 33+50.00