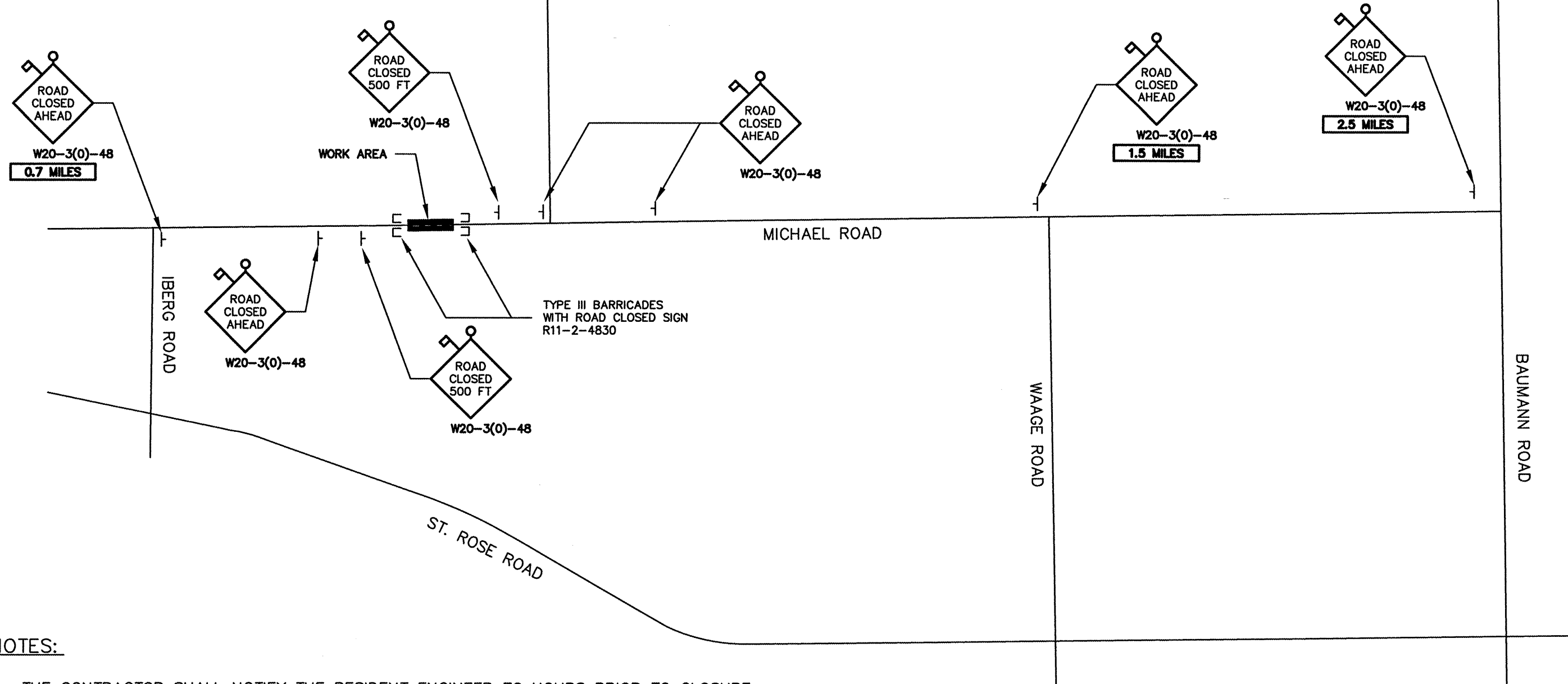


# TRAFFIC CONTROL PLAN

ROUTE NO.	SECTION	COUNTY	TOTAL SHEETS	SHEET NO.
TR 305A	06-11114-00-BR	MADISON	25	6

CONTRACT NO. 97461



## NOTES:

1. THE CONTRACTOR SHALL NOTIFY THE RESIDENT ENGINEER 72 HOURS PRIOR TO CLOSURE.
2. ALL TRAFFIC CONTROL DEVICES SHALL INCLUDE LOW INTENSITY FLASHING LIGHTS.
3. LOCATION OF TRAFFIC CONTROL DEVICES SHALL BE APPROVED BY THE ENGINEER PRIOR TO PLACEMENT.
4. FOR STABILIZATION, ALL TYPE III BARRICADES SHALL REQUIRE A MINIMUM OF FOUR SAND BAGS PER BARRICADE.
5. CONTRACTOR SHALL MAINTAIN ACCESS TO ALL PRIVATE ENTRANCES AT ALL TIMES.
6. TRAFFIC CONTROL SHALL CONFORM TO IDOT HIGHWAY STANDARDS: 701901-01, B.L.R. 21-8.

