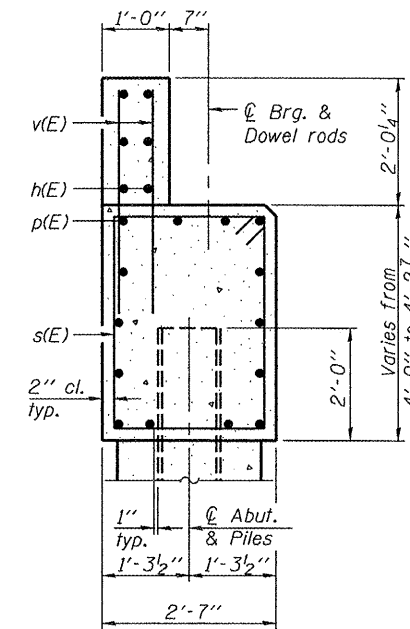
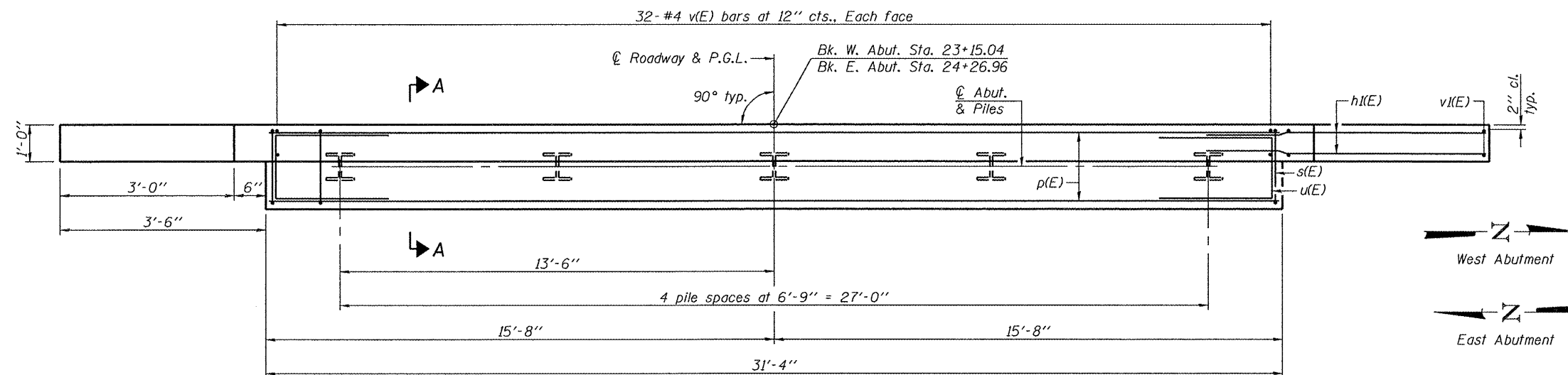


ELEVATION



SECTION A-A



PLAN

BILL OF MATERIAL
(Two Abutments)

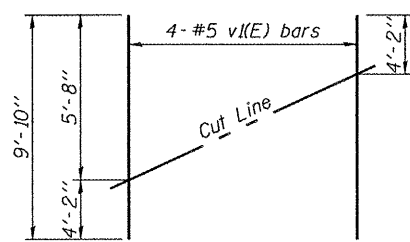
Bar	No.	Size	Length	Shape
h(E)	12	#4	31'-0"	—
h(E)	64	#4	5'-11"	—
p(E)	28	#5	31'-0"	—
s(E)	60	#4	12'-7"	□
u(E)	20	#6	11'-0"	□
v(E)	128	#4	3'-5"	—
v(E)	16	#5	9'-10"	—
Concrete Structures		Cu. Yd.	32.2	
Concrete Encasement		Cu. Yd.	3.5	
Reinforcement Bars, Epoxy Coated		Pound	2,700	
Furnishing Steel Piles HP12x53		Foot	576	
Driving Piles		Foot	576	
Test Pile Steel HP12x53		Each	2	
Pile Shoes		Each	10	

PILE DATA

(Two Abutments)
 Type: HP12x53 with Pile Shoes
 Nominal Required Bearing: 419 kips
 Factored Resistance Available: 209 kips
 Est. Length: 72'
 No. Production Piles: 8
 No. Test Piles: 2

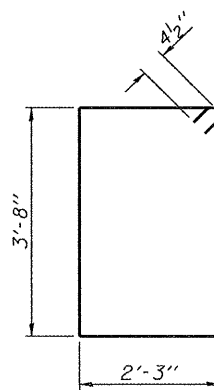
ELEVATION TABLE

	A	B	C	D	E
W. Abut.	486.51	484.49	484.25	486.27	480.25
E. Abut.	486.00	483.98	483.74	485.76	479.74

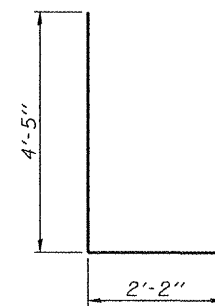


FIELD CUTTING DIAGRAM

Order v(E) bars full length. Cut as shown and use remainder of bars in opposite face.



BAR s(E)



BAR u(E)

Notes:

- For details of piles and Concrete Encasement, see sheet 9 of 14.
- Space reinforcement in cap to miss dowel rods.
- The backwall and portion of the wingwall above the mandatory bonded construction joint shall be cast against the in-place beam.
- One test pile shall be driven at each abutment in a production pile location specified by the Engineer and incorporated into the structure.



USER NAME =	DESIGNED - JAD	REVISED -
PLOT SCALE =	CHECKED - DGL	REVISED -
PLOT DATE =	DRAWN - JAD	REVISED -
	CHECKED - DGL	REVISED -

STATE OF ILLINOIS
DEPARTMENT OF TRANSPORTATION

ABUTMENTS
STRUCTURE NO. 060-3346

SHEET NO. 7 OF 14 SHEETS

TWP Road	SECTION	COUNTY	TOTAL SHEETS	SHEET NO.
305A	06-11114-00-BR	MADISON	25	14
CONTRACT NO.				
ILLINOIS FED. AID PROJECT				