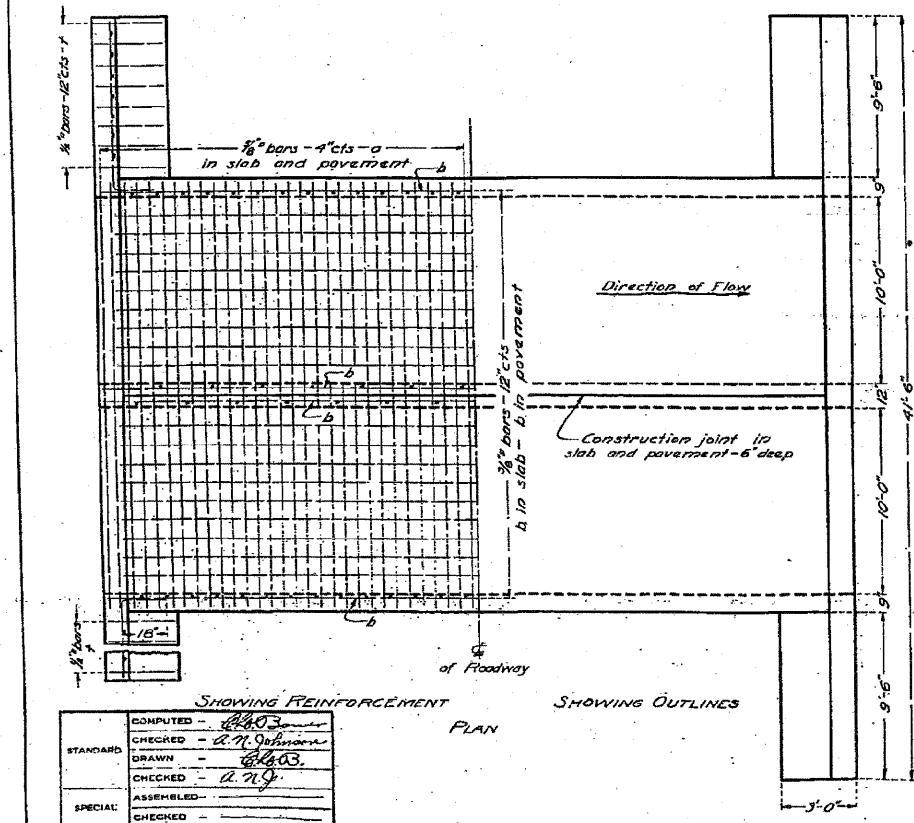
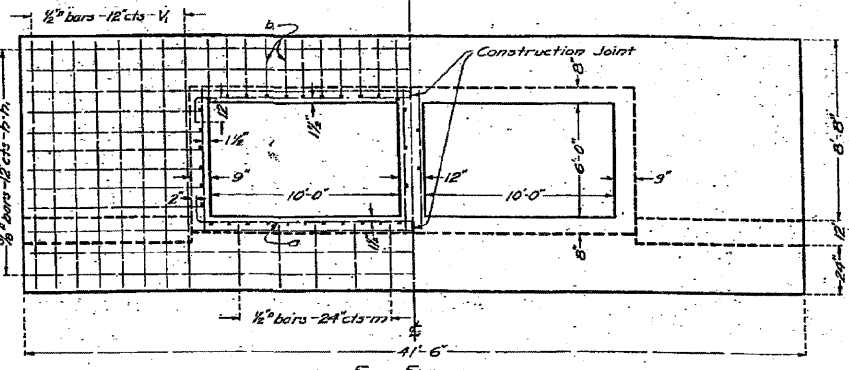
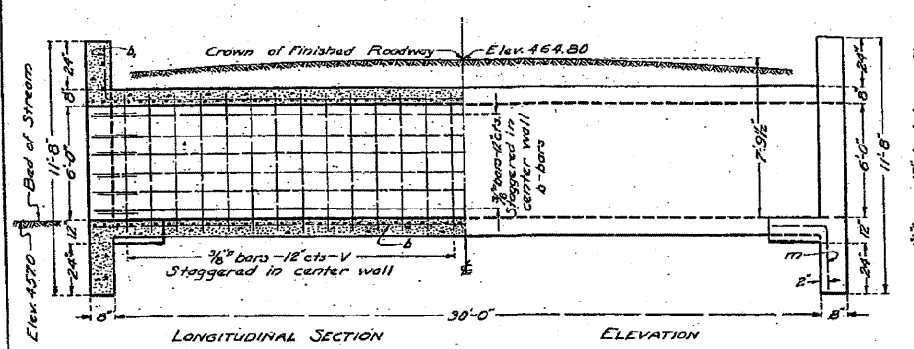


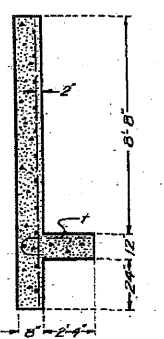
B.M. Will be shown on plans.
No existing structure.

STATE OF ILLINOIS
DEPARTMENT OF PUBLIC WORKS & BUILDINGS
DIVISION OF HIGHWAYS

ROUTE	COUNTY	SEC.	SHEET
34	POPE	2	28



SHOWING REINFORCEMENT END ELEVATION SHOWING OUTLINES



BILL OF MATERIAL

Bars	No.	Size	Length
V	90	3/8"	7'-0"
V ₁	40	3/8"	11'-3"
h	16	3/8"	21'-6"
h ₂	32	3/8"	11'-6"
a	100	3/8"	24'-0"
b	74	3/8"	16'-6"
b ₂	48	3/8"	13'-0"
f	40	1/2"	3'-6"
m	10	1/2"	3'-0"

Steel - Lbs. 8200
Concrete - Cu. Yds. 71.3

Class 'A' concrete to be used thruout. Proportions 1:2 1/2:4.
Use 'm' bars in downstream headwall only.

COMPUTED	-	W.B.
CHECKED	-	R.N. Johnson
DRAWN	-	W.B.
CHECKED	-	R.N.
SPECIAL	ASSEMBLED	
	CHECKED	

EXAMINED: JUNE 27, 1922
PASSED: H.E. DAVENPORT
APPROVED: Clifford R. ...

STA. 635+40
STATE BOND ISSUE - ROUTE 34
SECTION 3b - POPE COUNTY

