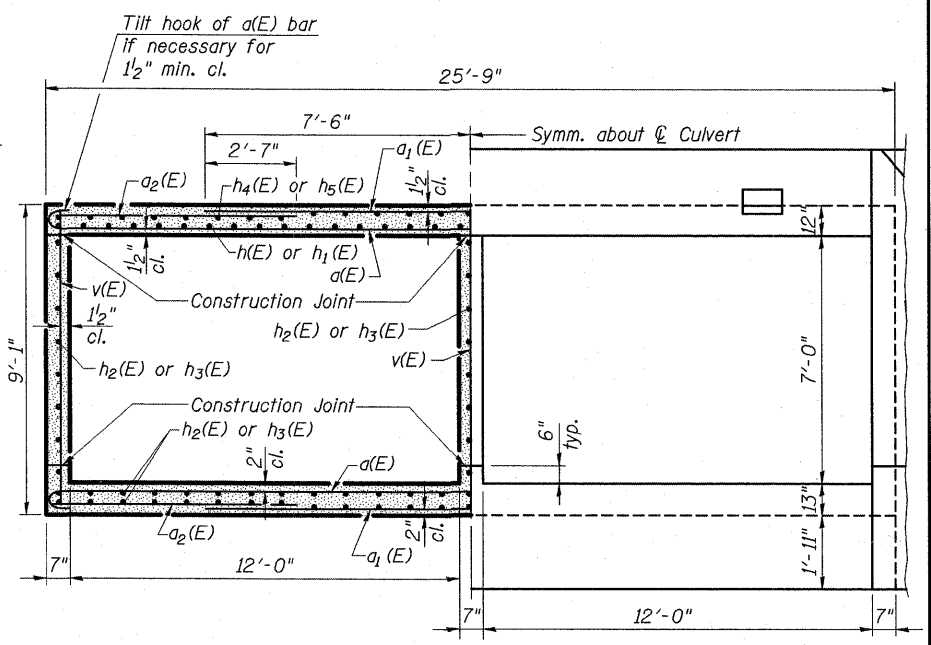


HALF LONG. SECTION
Showing bars in Center Wall

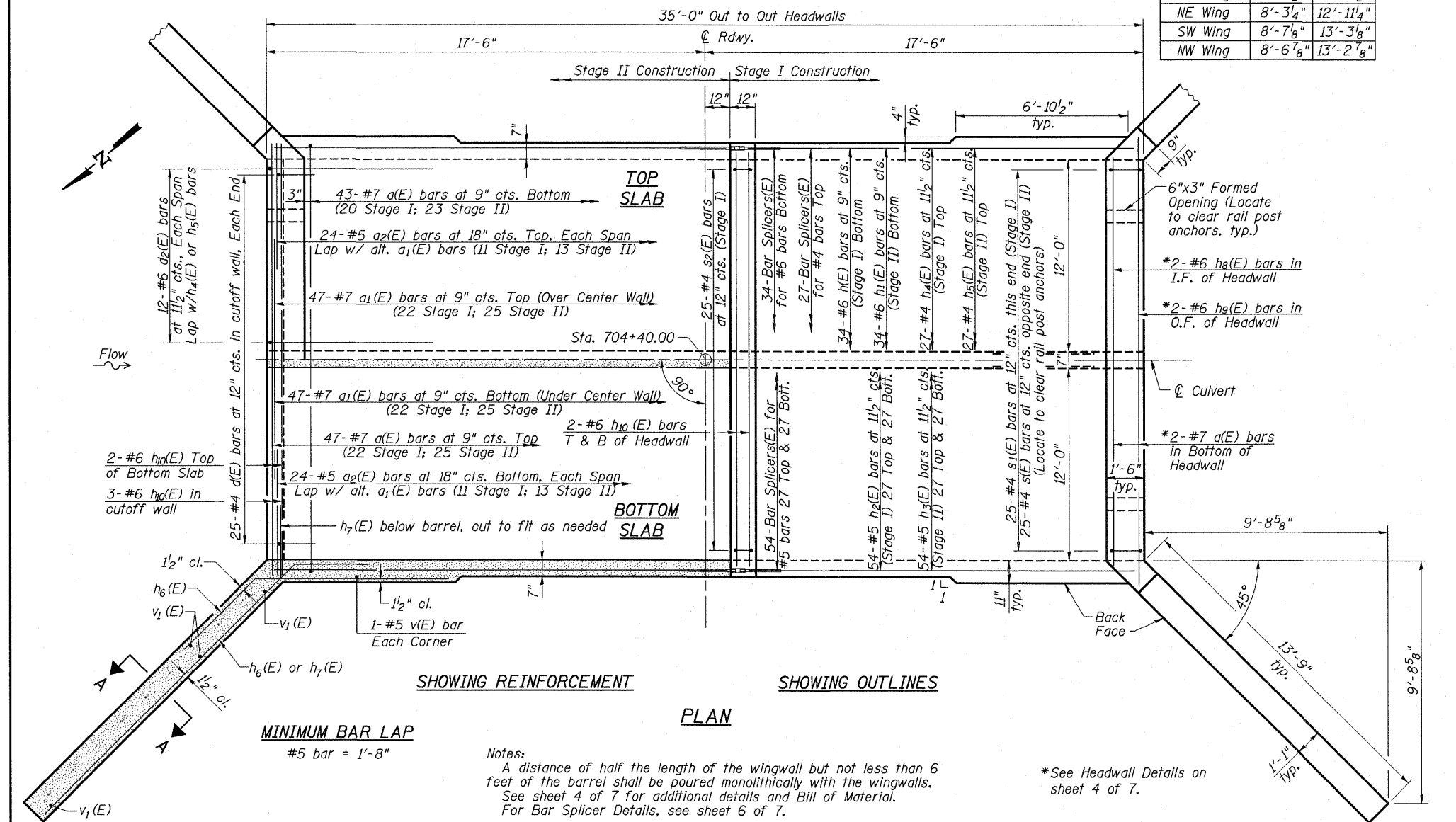
HALF ELEVATION
Showing bars in Outside Wall

Location	Dimension	
	"B"	"C"
SE Wing	8'-3 1/2"	12'-11 1/2"
NE Wing	8'-3 1/4"	12'-11 1/4"
SW Wing	8'-7 7/8"	13'-3 3/8"
NW Wing	8'-6 7/8"	13'-2 7/8"



HALF SECTION THRU BARREL

HALF END ELEVATION



SHOWING REINFORCEMENT

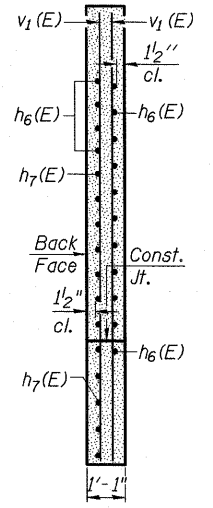
SHOWING OUTLINES

PLAN

MINIMUM BAR LAP
#5 bar = 1'-8"

Notes:
A distance of half the length of the wingwall but not less than 6 feet of the barrel shall be poured monolithically with the wingwalls. See sheet 4 of 7 for additional details and Bill of Material. For Bar Splicer Details, see sheet 6 of 7.

*See Headwall Details on sheet 4 of 7.



SECTION A-A