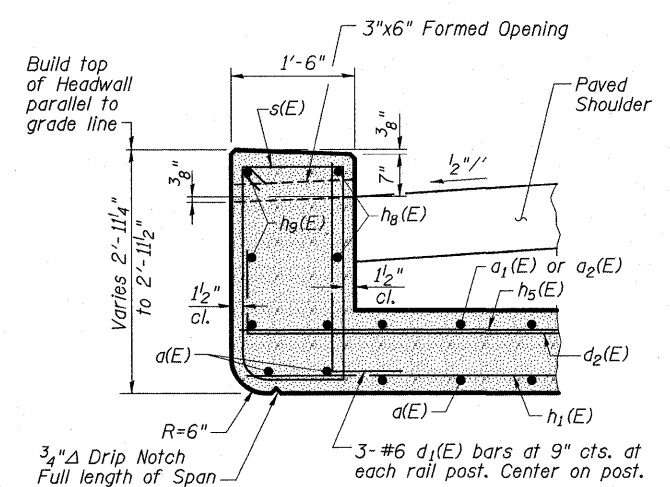


**INSIDE ELEVATION OF RAILING**

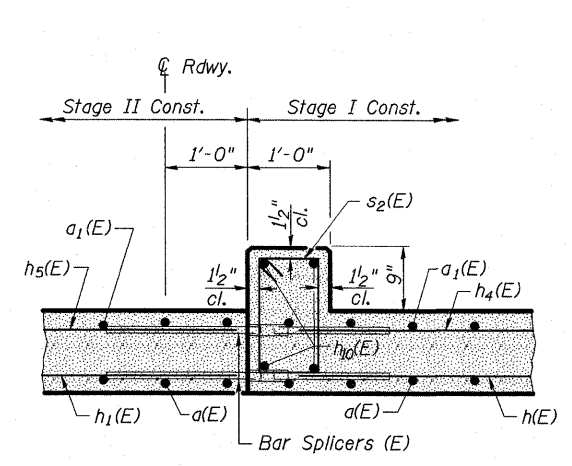
Note:  
See sheet 5 of 7 for railing details.

**BILL OF MATERIAL**

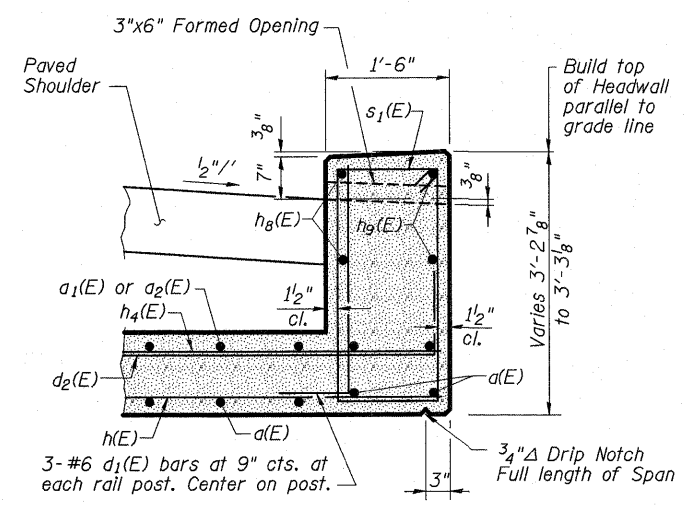
Bar	No.	Size	Length	Shape
d(E)	94	#7	27'-1"	U
a <sub>1</sub> (E)	94	#7	15'-0"	—
a <sub>2</sub> (E)	96	#5	8'-0"	—
d(E)	50	#4	4'-5"	—
d <sub>1</sub> (E)	36	#6	3'-7"	—
d <sub>2</sub> (E)	48	#6	7'-6"	—
h(E)	34	#6	16'-2"	—
h <sub>1</sub> (E)	34	#6	18'-0"	—
h <sub>2</sub> (E)	78	#5	16'-2"	—
h <sub>3</sub> (E)	78	#5	18'-2"	—
h <sub>4</sub> (E)	27	#4	16'-2"	—
h <sub>5</sub> (E)	27	#4	18'-2"	—
h <sub>6</sub> (E)	60	#8	8'-0"	—
h <sub>7</sub> (E)	48	#8	17'-3"	—
h <sub>8</sub> (E)	4	#6	24'-7"	—
h <sub>9</sub> (E)	4	#6	26'-7"	—
h <sub>10</sub> (E)	14	#6	25'-5"	—
s(E)	25	#4	8'-2"	□
s <sub>1</sub> (E)	25	#4	8'-11"	□
s <sub>2</sub> (E)	25	#4	5'-1"	□
v(E)	124	#5	8'-9"	—
v <sub>1</sub> (E)	16	#4	12'-8"	—
Concrete Box Culverts	Cu. Yd.		121.3	
Reinforcement Bars, Epoxy Coated	Pound		20,900	



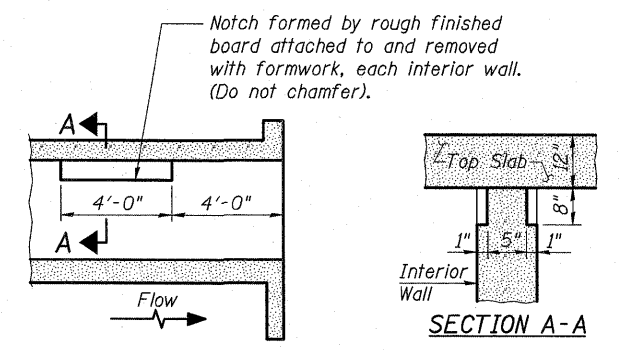
AT UPSTREAM END



AT STAGE CONSTRUCTION JOINT

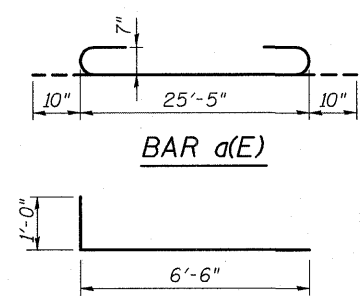


AT DOWNSTREAM END

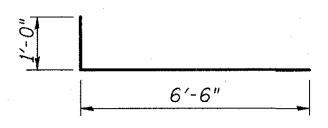


LONGITUDINAL SECTION

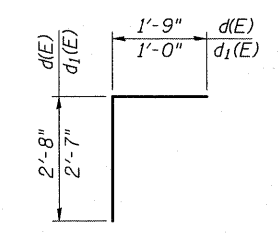
PHOEBE NESTING  
SITE DETAILS  
(Downstream End Only)



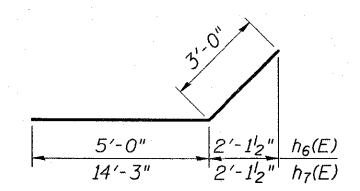
BAR a(E)



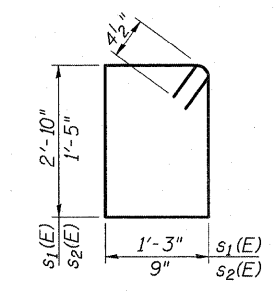
BAR d<sub>2</sub>(E)



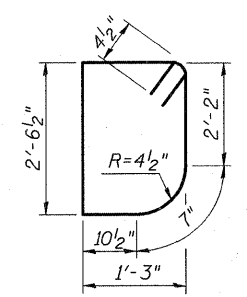
BARS d(E) & d<sub>1</sub>(E)



BARS h<sub>6</sub>(E) & h<sub>7</sub>(E)



BARS s<sub>1</sub>(E) & s<sub>2</sub>(E)



BAR s(E)

(Sheet 2 of 2)