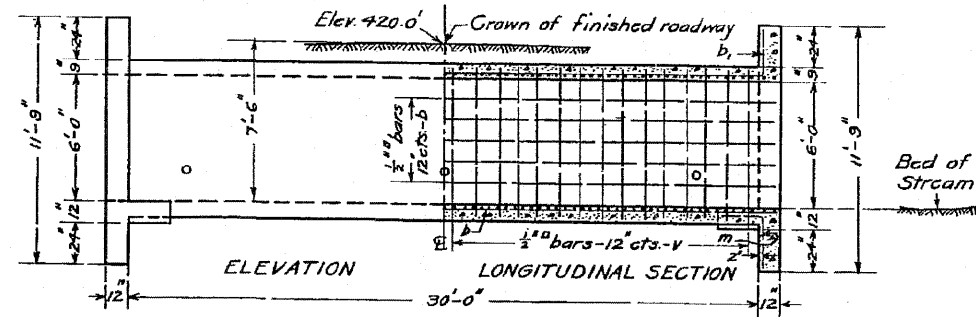
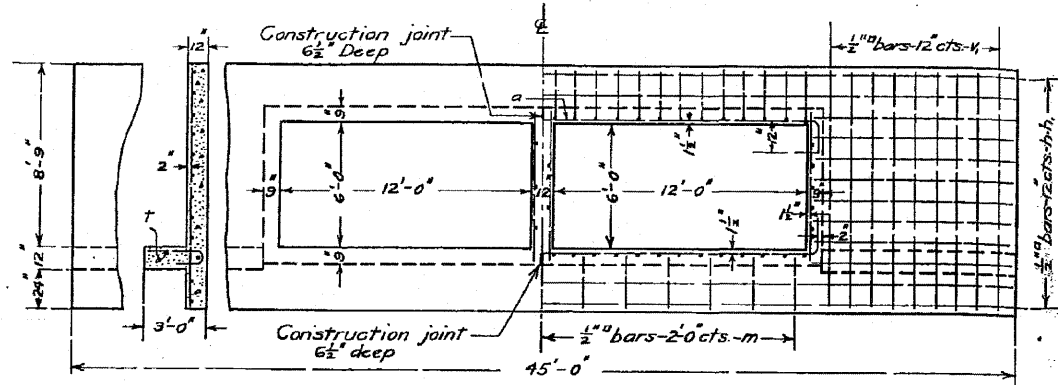


B.M. See Road Plans.  
No Existing Structure

STATE OF ILLINOIS  
DEPARTMENT OF PUBLIC WORKS & BUILDINGS  
DIVISION OF HIGHWAYS

BOND ISSUE ROUTE NO.	COUNTY	SEC.	TOTAL SHEETS	SHEET NO.
34	POPE	36	58	30



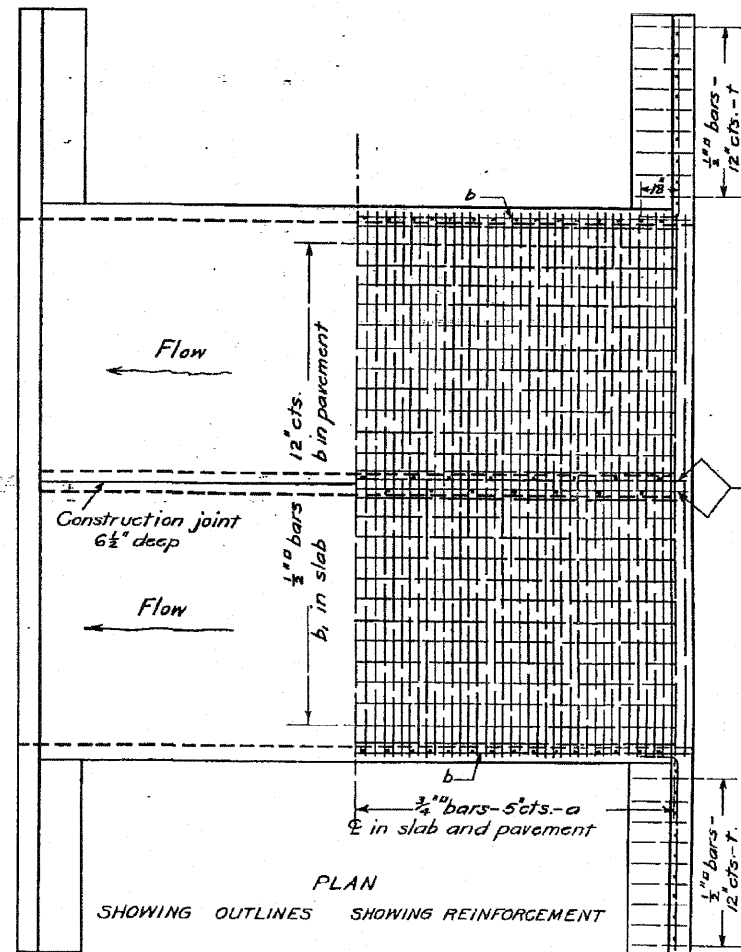
END ELEVATION  
SHOWING OUTLINES      SHOWING REINFORCEMENT

Note:-  
Use 'm' bars in downstream headwall only.  
'v' and 'b' bars in center wall are staggered. Distance center to center of bars 24" on each side.

BILL OF MATERIAL

Bars	No.	Size	Length
v	90	1/2"	7'-0"
v	36	1/2"	11'-6"
h	16	1/2"	23'-6"
h	32	1/2"	11'-6"
a	154	3/4"	28'-0"
b	82	1/2"	17'-0"
b	52	1/2"	18'-0"
t	36	1/2"	3'-6"
m	13	1/2"	4'-9"
Steel - Lbs.			11,910
Concrete - Cu.Yds.			91.9

Glass A concrete to be used throughout.  
Proportions 1:2 1/2:4.



PLAN  
SHOWING OUTLINES      SHOWING REINFORCEMENT

COMPUTED	- S. A. Mackenzie
CHECKED	- R. E. Cochran
DRAWN	- S. A. M.
CHECKED	- R. E. E.
ASSEMBLED	-
CHECKED	-

EXAMINED June 27 1937

H. E. Durman  
BRIDGE ENGINEER

PASSED H. E. Durman  
ENGINEER OF DESIGN

APPROVED Clifford R. Decker  
CHIEF HIGHWAY ENGINEER

STA. 704+40  
STATE BOND ISSUE ROUTE 34  
SECTION 36 POPE CO.