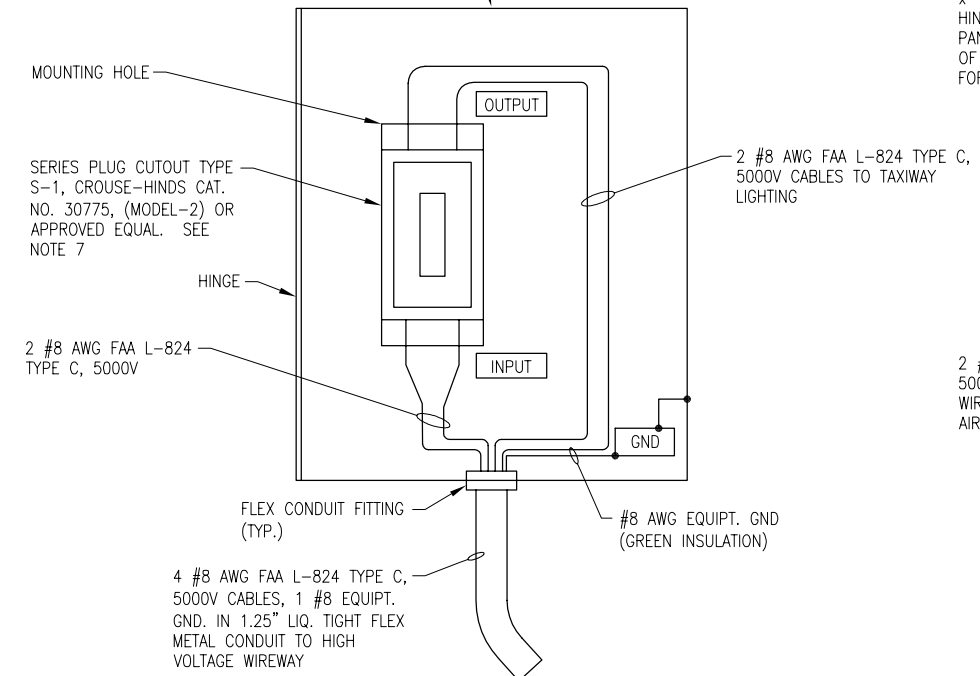


HIGH VOLTAGE WIRING SCHEMATIC

NOTES:

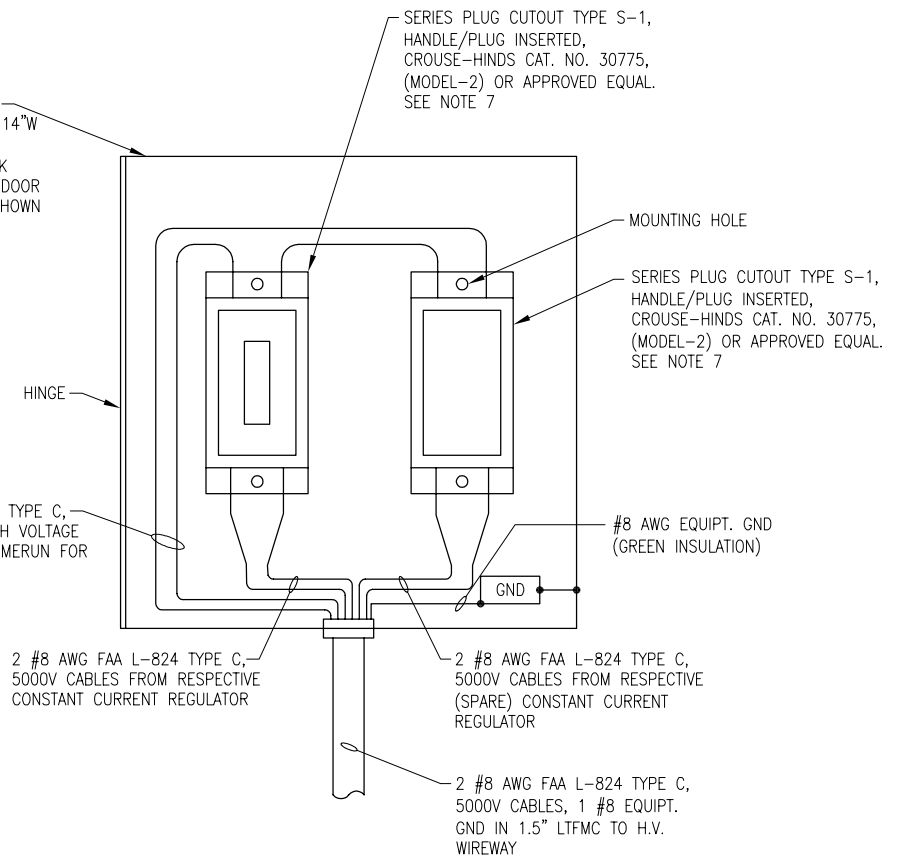
1. PROVIDE PHENOLIC ENGRAVED LEGEND PLATES FOR EACH CONSTANT CURRENT REGULATOR (EXISTING & NEW) NOTING THE RUNWAY AND/OR TAXIWAY SERVED.
2. EACH PLUG CUTOUT CABINET SHALL BE FURNISHED WITH A PHENOLIC ENGRAVED LEGEND PLATE THAT IDENTIFIES THE RESPECTIVE RUNWAY OR TAXIWAY CIRCUIT OR REGULATOR. INCLUDE AN ADDITIONAL LEGEND PLATE LABELED "CAUTION OPERATE CUTOUTS WITH CCR SHUT OFF".
3. PROVIDE PHENOLIC ENGRAVED LEGEND PLATES FOR THE CUTOUTS TO IDENTIFY THE RESPECTIVE REGULATOR OUTPUT CONNECTION AND THE RESPECTIVE CIRCUIT LOAD CONNECTION.
4. BOND REGULATOR FRAME TO VAULT GROUND BUS WITH A DEDICATED #6 AWG BONDING JUMPER.
5. PROVIDE ADEQUATE WORKING SPACE IN FRONT OF EACH CUTOUT ENCLOSURE TO MEET NEC CLEARANCE REQUIREMENTS.
6. LIQUID TIGHT FLEXIBLE METAL CONDUIT AND ASSOCIATED FITTINGS SHALL BE U.L. LISTED TO MEET THE REQUIREMENTS OF NEC 350.6, SUITABLE FOR GROUNDING AND SUNLIGHT RESISTANT. LIQUID TIGHT FLEXIBLE METAL CONDUIT THAT IS USED FOR FLEXIBILITY (INCLUDING CONNECTIONS TO CCR'S & TRANSFORMERS) SHALL REQUIRE AN EXTERNAL BONDING JUMPER OR INTERNAL EQUIPMENT GROUNDING CONDUCTOR PER NEC 350.60. EXTERNAL BONDING JUMPERS USED WITH CCR INSTALLATIONS SHALL BE #6 AWG COPPER (MINIMUM). DO NOT INSTALL LIQUID TIGHT FLEXIBLE METAL CONDUIT THAT IS NOT UL LISTED. CONFIRM LIQUID TIGHT FLEXIBLE METAL CONDUIT BEARS THE UL LABEL PRIOR TO INSTALLING IT.
7. CROUSE-HINDS CAT. NO. 30771, (MODEL-3) SERIES PLUG CUTOUTS ARE NOT ACCEPTABLE, BECAUSE THE HANDLE IS NOT REMOVABLE. ADB SIEMENS SCO SERIES CUTOUTS ARE NOT ACCEPTABLE BECAUSE THEY DO NOT FUNCTION THE SAME AS THE CROUSE-HINDS 30775 CUTOUT. AIRPORT LIGHTING CO. PART NO. S1 CUTOUTS ARE NOT ACCEPTABLE BECAUSE THEY HAVE BEEN OBSERVED TO NOT FUNCTION THE SAME AS THE CROUSE-HINDS 30775 CUTOUT WHEN THE HANDLE IS REMOVED, AND THE MFR DOES NOT RECOMMEND OPERATION OF THE CUTOUT WITH THE HANDLE REMOVED. OTHER CUTOUTS THAT DO NOT FUNCTION THE SAME AS CROUSE-HINDS CAT. NO. 30775 (MODEL-2) ARE NOT ACCEPTABLE.
8. HIGH VOLTAGE & LOW VOLTAGE CIRCUITS SHALL NOT BE INSTALLED IN THE SAME WIREWAY.

14"H x 12"W x 9"D (APPROXIMATE DIMENSIONS) NEMA 1 OR NEMA 12 ENCLOSURE WITH HINGED COVER & BACK PANEL. NOTE FRONT DOOR OF ENCLOSURE NOT SHOWN FOR CLARITY. ADJUST ENCLOSURE DIMENSIONS AS NECESSARY TO ACCOMMODATE THE RESPECTIVE CUTOUT



SERIES PLUG CUTOUT MOUNTING DETAIL FOR TWY 9-27 CIRCUIT & RWY 18-36 CIRCUIT (TYP. FOR 2) NOT TO SCALE

NEMA 1 OR NEMA 12 ENCLOSURE (MINIMUM 14"W x 16"H x 8"D) WITH HINGED COVER & BACK PANEL. NOTE FRONT DOOR OF ENCLOSURE NOT SHOWN FOR CLARITY



SERIES PLUG CUTOUT MOUNTING DETAIL FOR RUNWAY 9-27 CIRCUIT NOT TO SCALE

LEGEND

- "I" DENOTES PLUG CUTOUT WITH PLUG INSERTED
- "P" DENOTES PLUG CUTOUT WITH PLUG PULLED
- "CCR" DENOTES CONSTANT CURRENT REGULATOR

REVISION	DATE	FILE	SCALE	CAT	RSS	MAM
EDGAR COUNTY AIRPORT PARIS, ILLINOIS						
A.I.P. PROJ.: 3-17-0077-B13 IL PROJ.: PRG-4018						
Hanson Proj. No. 10A0053	Filename E-605.DWG	Scale NONE	Date 03/10/11	LAYOUT	DRAWN	REVIEWED
HANSON				ARMSTRONG		
CONSTRUCT CROSSWIND RUNWAY 18-36			HIGH VOLTAGE WIRING SCHEMATIC			
53						
53 of 137 sheets						

MAR 11, 2011 10:16 AM MMIRANCE P:\ELEC PROJECTS\20114100-000 EDGAR COUNTY ELECTRICAL VAULT DRAWINGS\PRODUCTION\PLANS\E-605.DWG