

STATE OF ILLINOIS  
DEPARTMENT OF TRANSPORTATION

F.A.P. RTE.	SECTION	COUNTY	TOTAL SHEETS	SHEET NO.
71	(113)PP-2	FORD	8	1
		ILLINOIS	CONTRACT NO. 66M34	

**INDEX OF SHEETS**

1. COVER SHEET
2. GENERAL NOTES
3. SUMMARY OF QUANTITIES
4. TYPICAL SECTION
5. SCHEDULES
- 6 - 7. CLASS B PAVEMENT PATCHING DETAILS
8. TEMPORARY INFORMATION SIGNING

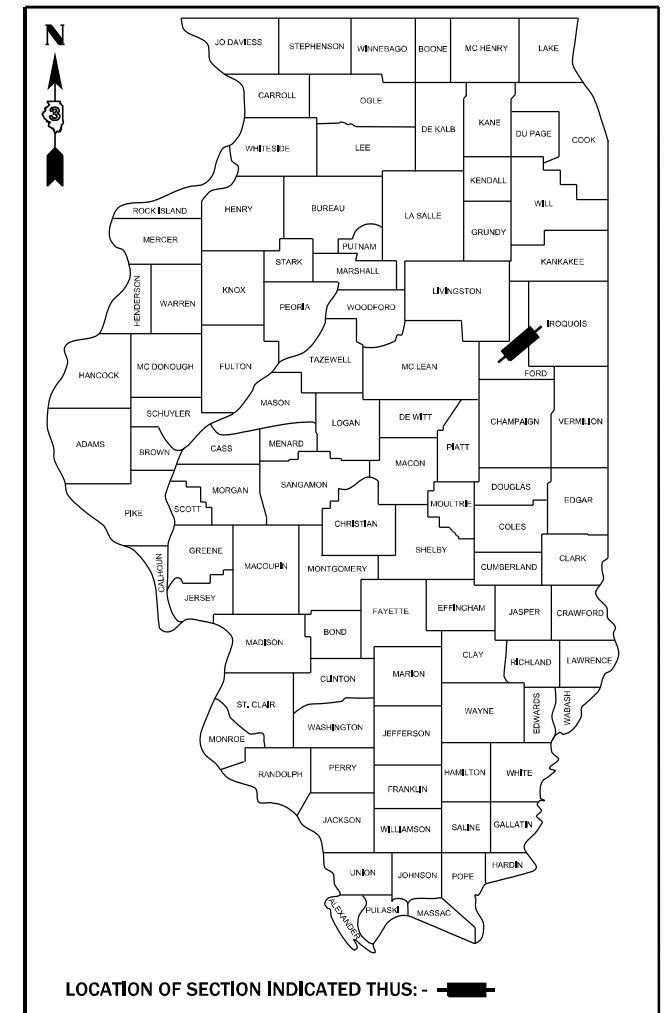
**HIGHWAY STANDARDS**

- 000001-08 STANDARD SYMBOLS, ABBREVIATIONS AND PATTERNS
- 001001-02 AREAS OF REINFORCEMENT BARS
- 001006 DECIMAL OF AN INCH AND OF A FOOT
- 701001-02 OFF-ROAD OPERATIONS 2L, 2W, MORE THAN 15' (4.5 m) AWAY
- 701006-05 OFF-ROAD OPERATIONS 2L, 2W, 15' (4.5 m) TO 24" (600 mm) FROM PAVEMENT EDGE
- 701301-04 LANE CLOSURE, 2L, 2W, SHORT TIME OPERATIONS
- 701336-07 LANE CLOSURE, 2L, 2W, WORK AREAS IN SERIES, FOR SPEEDS  $\geq$  45 MPH
- 701501-06 URBAN LANE CLOSURE, 2L, 2W, UNDIVIDED
- 701901-08 TRAFFIC CONTROL DEVICES

# PROPOSED HIGHWAY PLANS

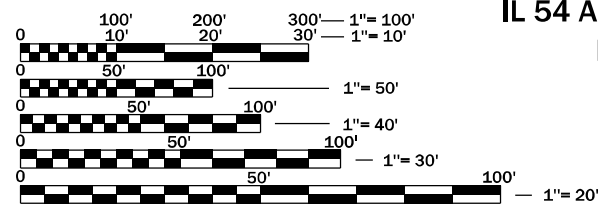
## FAP ROUTE 71 (IL 54) SECTION (113)PP-2 CLASS B PAVEMENT PATCHING FORD COUNTY C-93-057-22

D-93-035-22



**BEGIN IMPROVEMENT**  
FORD/IROQUOIS CO. LN.  
LOG MILE 0.00

**END IMPROVEMENT**  
SOUTH INTERSECTION OF  
IL 54 AND IL 115 (ROBERTS)  
LOG MILE 4.90



FULL SIZE PLANS HAVE BEEN PREPARED USING STANDARD ENGINEERING SCALES. REDUCED SIZED PLANS WILL NOT CONFORM TO STANDARD SCALES. IN MAKING MEASUREMENTS ON REDUCED PLANS, THE ABOVE SCALES MAY BE USED.

J.U.L.I.E.  
JOINT UTILITY LOCATION INFORMATION FOR EXCAVATION  
1-800-892-0123  
OR 811

PROJECT ENGINEER YOGESH PATEL P.E.  
UNIT CHIEF RON WOODSHANK  
DISTRICT 3 NO. (815) 434-6131  
CONTRACT NO. 66M34

GROSS LENGTH = 25,872 FT. = 4.90 MILES  
NET LENGTH = 216 FT. = 0.04 MILES

**FUNCTIONAL CLASSIFICATION**  
RURAL  
MAJOR COLLECTOR  
F.A.P. ROUTE 71 (IL 54)  
2019 ADT = 900  
P.V. 85.6% S.U. 3.3% M.U. 11.1%

STATE OF ILLINOIS  
DEPARTMENT OF TRANSPORTATION

SUBMITTED January 31, 2022

*[Signature]* REGIONAL ENGINEER

March 25, 2022

*[Signature]* ENGINEER OF DESIGN AND ENVIRONMENT

March 23, 2022

*[Signature]* DIRECTOR OF HIGHWAYS PROJECT IMPLEMENTATION

PRINTED BY THE AUTHORITY  
OF THE STATE OF ILLINOIS

**GENERAL NOTES**

PLAN DIMENSIONS AND DETAILS RELATIVE TO EXISTING PLANS ARE SUBJECT TO NOMINAL CONSTRUCTION VARIATIONS. THE CONTRACTOR SHALL FIELD VERIFY EXISTING DIMENSIONS AND DETAILS AFFECTING NEW CONSTRUCTION AND MAKE NECESSARY APPROVED ADJUSTMENTS PRIOR TO CONSTRUCTION OR ORDERING OF MATERIALS. SUCH VARIATIONS SHALL NOT BE CAUSE FOR ADDITIONAL COMPENSATION FOR A CHANGE IN SCOPE OF WORK; HOWEVER, THE CONTRACTOR WILL BE PAID FOR THE QUANTITY ACTUALLY FURNISHED AT THE UNIT PRICE BID FOR THE WORK.

ALL EXCAVATED MATERIAL, WHICH INCLUDES DIGGING OR GRADING OF ANY SOIL OR FILL MATERIAL, WITH THE EXCEPTION OF AGGREGATE FILLS, MUST BE INCORPORATED WITHIN THE IDOT RIGHT OF WAY.

THE CONTRACTOR SHALL CONTACT JULIE AT LEAST 48 HOURS PRIOR TO EXCAVATION TO DETERMINE WHICH UTILITIES ARE IN THE AREA.

**COMMITMENTS**

STATE OF ILLINOIS  
DEPARTMENT OF TRANSPORTATION  
DISTRICT THREE  
AS BUILT INFORMATION

\_\_\_\_\_  
SUPERVISING CONSTRUCTION FIELD ENGINEER

\_\_\_\_\_  
RESIDENT ENGINEER / TECHNICIAN

START & END DATES  
OF CONSTRUCTION:

\_\_\_\_\_

INSPECTORS:

\_\_\_\_\_

\_\_\_\_\_

\_\_\_\_\_

STATE OF ILLINOIS  
DEPARTMENT OF TRANSPORTATION  
DISTRICT THREE

PREPARED BY: \_\_\_\_\_  
DISTRICT STUDIES & PLANS ENGINEER

DATE: \_\_\_\_\_

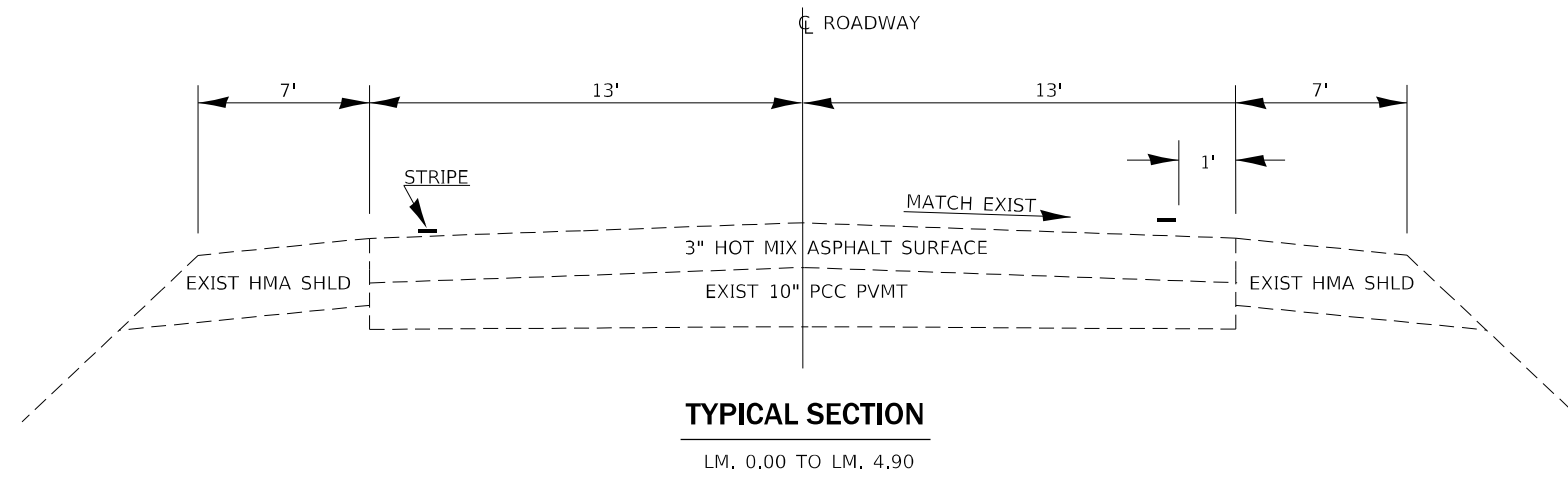
EXAMINED BY: \_\_\_\_\_  
DISTRICT CONSTRUCTION ENGINEER

\_\_\_\_\_  
DISTRICT MATERIALS ENGINEER

\_\_\_\_\_  
DISTRICT OPERATIONS ENGINEER

FILE NAME =	USER NAME = woodshank1	DESIGNED - EVAN MARINI	REVISED -	<b>STATE OF ILLINOIS DEPARTMENT OF TRANSPORTATION</b>	<b>GENERAL NOTES</b>	F.A.P. RTE.	SECTION	COUNTY	TOTAL SHEETS	SHEET NO.	
pw:\idot\pw\berkeley.com\PWIDOT\Documents\IDOT Office\District 3\Projects\ID366M34\CADData\ID366M34 - PLANS.dgn	DRAWN - EVAN MARINI	REVISED -	71			(113)PP-2	FORD	8	2		
Default	PLOT SCALE = 100,0000' / in.	CHECKED - RON WOODSHANK	REVISED -			CONTRACT NO. 66M34					
	PLOT DATE = 1/18/2022	DATE - 1/22/2019	REVISED -			SCALE:	SHEET 1	OF 1	SHEETS	STA.	TO STA.

CODE NO.	ITEM	UNIT	TOTAL QUANTITY	CONSTRUCTION CODE	
				CONTRACT MAINTENANCE 100% STATE ROADWAY 0006 RURAL	
44201007	CLASS B PATCHES, TYPE II, 13 INCH	SQ YD	324		324
44201299	DOWEL BARS 1 1/2"	EACH	792		792
44213200	SAW CUTS	FOOT	1836		1836
67100100	MOBILIZATION	L SUM	1		1
70100600	TRAFFIC CONTROL AND PROTECTION, STANDARD 701336	L SUM	1		1
70102620	TRAFFIC CONTROL AND PROTECTION, STANDARD 701501	L SUM	1		1
Z0030850	TEMPORARY INFORMATION SIGNING	SQ FT	42		42



FILE NAME =	USER NAME = woodshank1	DESIGNED - EVAN MARINI	REVISED -
pw:\idol-pw.berkeley.com\PWIDOT\Documents\IDOT Office\es\District 3\Projects\ID366M34\CADData\ID366M34 - PLANS.dwg		DRAWN - EVAN MARINI	REVISED -
Default	PLOT SCALE = 100,0000' / in.	CHECKED - RON WOODSHANK	REVISED -
	PLOT DATE = 1/18/2022	DATE - 1/22/2019	REVISED -

**STATE OF ILLINOIS  
DEPARTMENT OF TRANSPORTATION**

<b>TYPICAL SECTION</b>			
SCALE:	SHEET 1	OF 1	SHEETS
	STA.		TO STA.

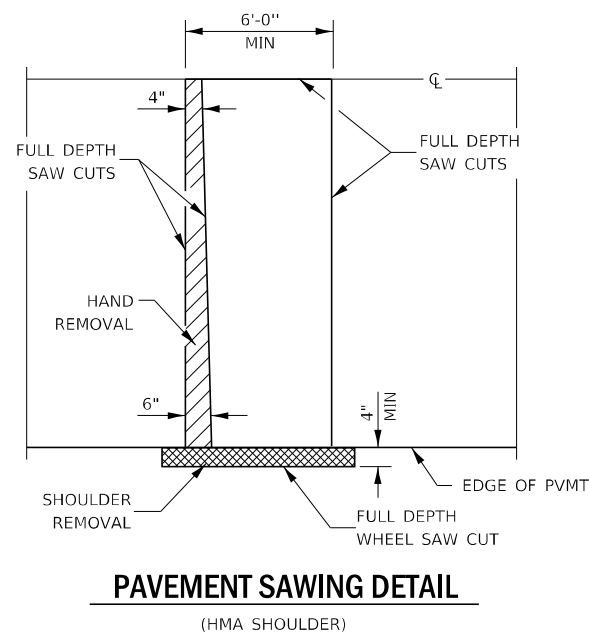
F.A.P. RTE.	SECTION	COUNTY	TOTAL SHEETS	SHEET NO.
71	(113)PP-2	FORD	8	4
CONTRACT NO. 66M34				
ILLINOIS FED. AID PROJECT				

SCHEDULE - CLASS B PATCHING

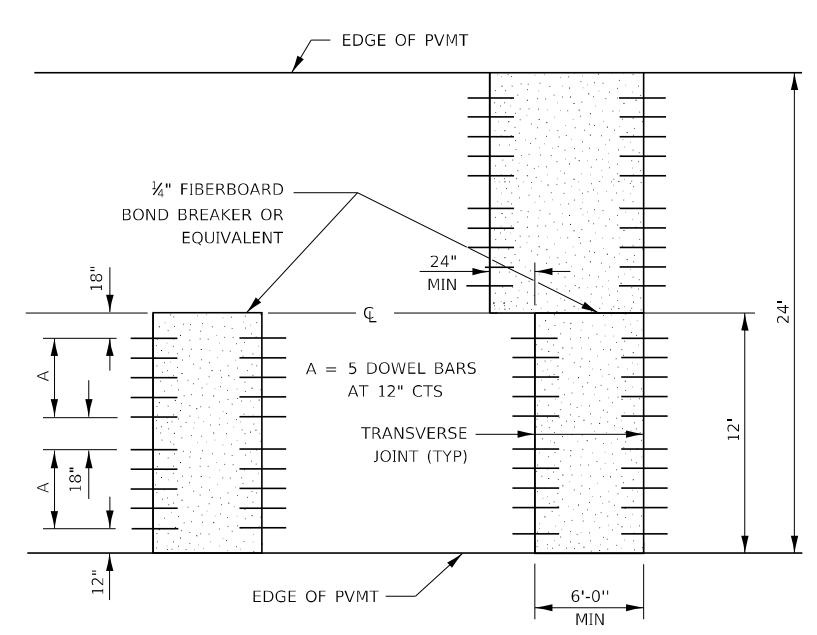
WESTBOUND LANE				
LOCATION	PATCH LENGTH	CLASS B TYPE	DOWEL BARS	SAW CUTS
		II 13"	1 1/2"	
LOG MILE	(FT)	SQ YD	EACH	FOOT
L.M. 0.00 = IROQUOIS/FORD COUNTY LINE				
0.00	6	9	22	51
0.05	6	9	22	51
0.10	6	9	22	51
0.20	6	9	22	51
0.30	6	9	22	51
0.50	6	9	22	51
0.90	6	9	22	51
1.00	6	9	22	51
1.50	6	9	22	51
1.70	6	9	22	51
2.00	6	9	22	51
2.10	6	9	22	51
2.40	6	9	22	51
2.80	6	9	22	51
3.20	6	9	22	51
3.60	6	9	22	51
3.80	6	9	22	51
4.00	6	9	22	51
L.M. 4.44 = NORTH INTERSECTION OF IL 54/115				
<b>TOTAL</b>	<b>108</b>	<b>162</b>	<b>396</b>	<b>918</b>

SCHEDULE - CLASS B PATCHING

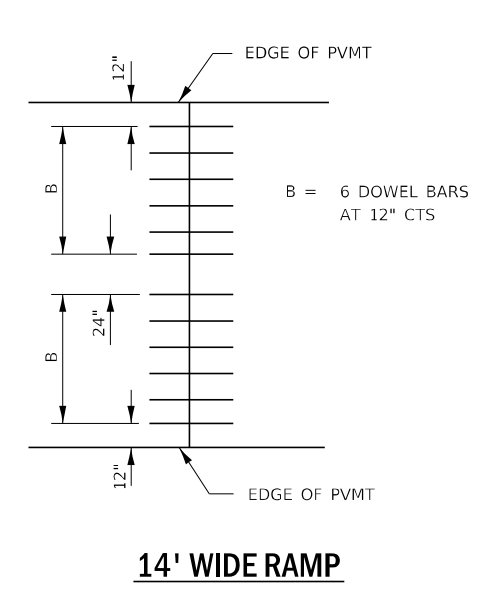
EASTBOUND LANE				
LOCATION	PATCH LENGTH	CLASS B TYPE	DOWEL BARS	SAW CUTS
		II 13"	1 1/2"	
LOG MILE	(FT)	SQ YD	EACH	FOOT
L.M. 4.44 = NORTH INTERSECTION OF IL 54/115				
4.00	6	9	22	51
3.80	6	9	22	51
3.60	6	9	22	51
3.20	6	9	22	51
2.80	6	9	22	51
2.40	6	9	22	51
2.10	6	9	22	51
2.00	6	9	22	51
1.70	6	9	22	51
1.50	6	9	22	51
1.00	6	9	22	51
0.90	6	9	22	51
0.50	6	9	22	51
0.30	6	9	22	51
0.20	6	9	22	51
0.10	6	9	22	51
0.05	6	9	22	51
0.00	6	9	22	51
L.M. 0.00 = IROQUOIS/FORD COUNTY LINE				
<b>TOTAL</b>	<b>108</b>	<b>162</b>	<b>396</b>	<b>918</b>



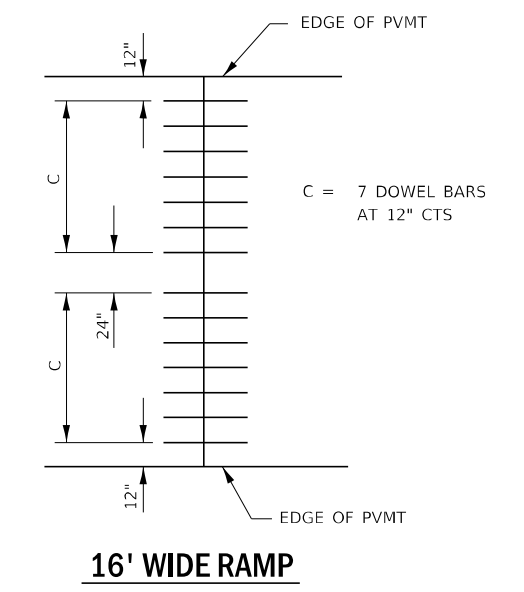
**PAVEMENT SAWING DETAIL**  
(HMA SHOULDER)



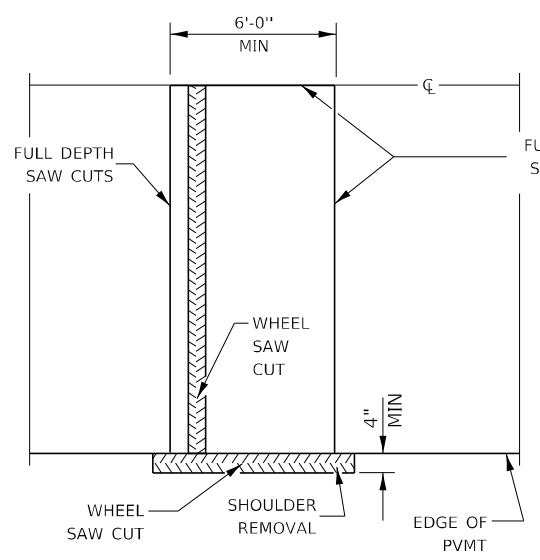
**12' WIDE LANES**



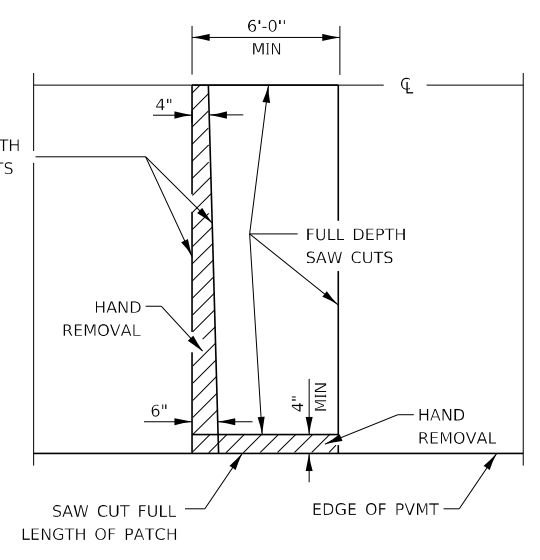
**14' WIDE RAMP**



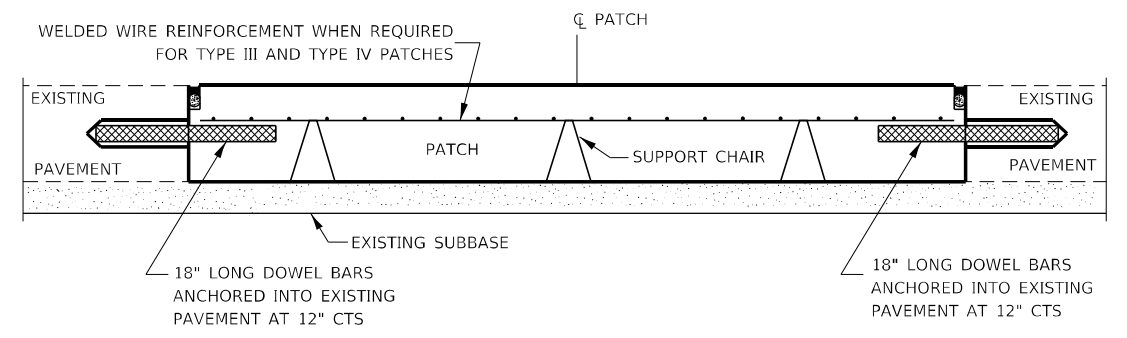
**16' WIDE RAMP**



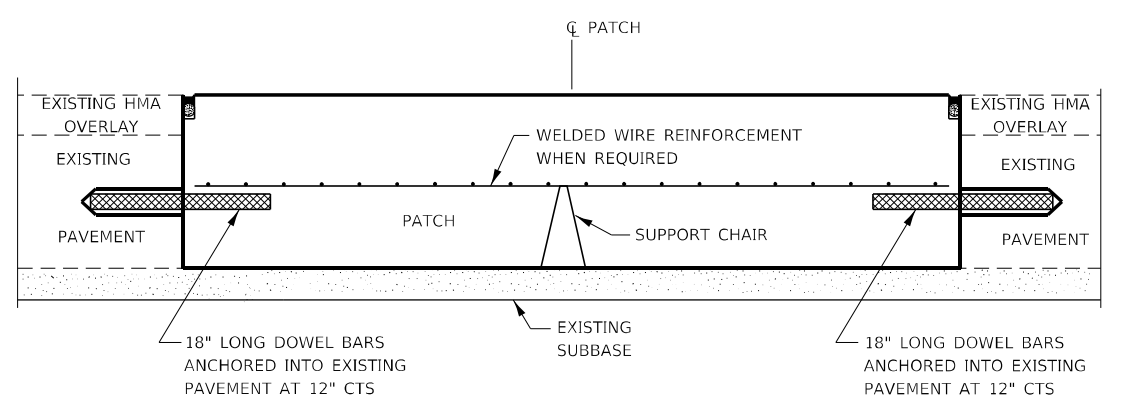
**ALTERNATE SAWING DETAIL**  
(HMA SHOULDER)



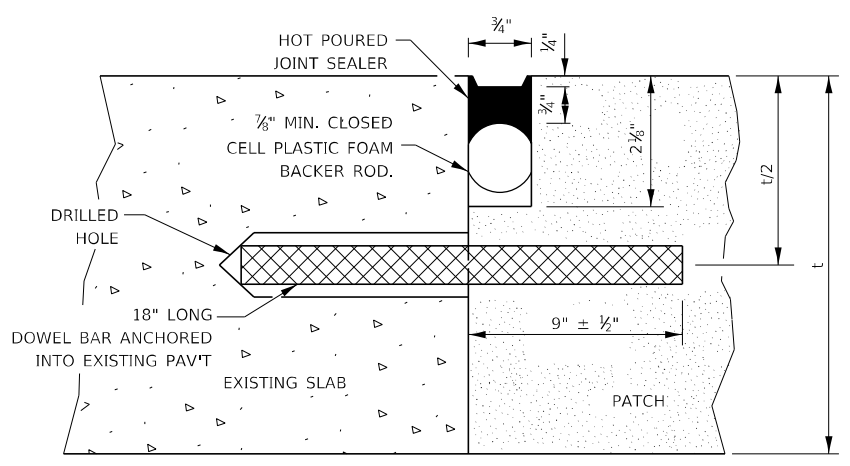
**PAVEMENT SAWING DETAIL**  
(PCC SHOULDER)



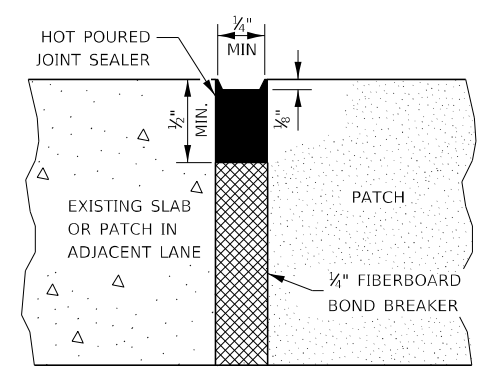
**PATCHING WITHOUT HMA OVERLAY**



**PATCHING WITH HMA OVERLAY**



**TRANSVERSE JOINT**



**CENTERLINE JOINT**

DOWEL BAR TABLE		
PAVEMENT THICKNESS	DOWEL BAR DIAMETER	HOLE DIAMETER
8" OR GREATER	1 1/2"	1 3/8"
7" THRU 7.99"	1 1/4"	1 3/8"
LESS THAN 7"	1"	1 3/8"

**GENERAL NOTES**

THE TRANSVERSE JOINTS FOR CLASS B PATCHES SHALL ALIGN WITH JOINTS OR CRACKS IN THE ADJACENT LANE WHENEVER POSSIBLE.

SEE STANDARD 420701 FOR DETAILS OF PAVEMENT WELDED WIRE REINFORCEMENT.

MODEL: Default  
 FILE: 66M34\_PAVSUBCLASS.PLT  
 PROJECT: D:\Projects\66M34\Drawings\66M34\_PAVSUBCLASS.dwg  
 PLOT DATE: 1/18/2022

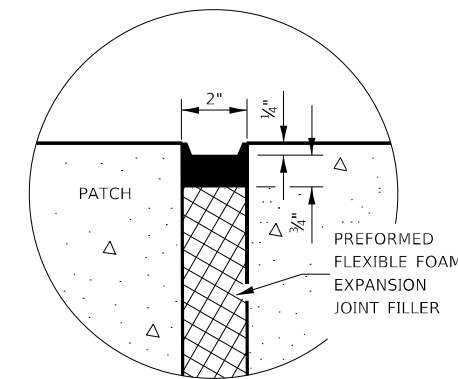
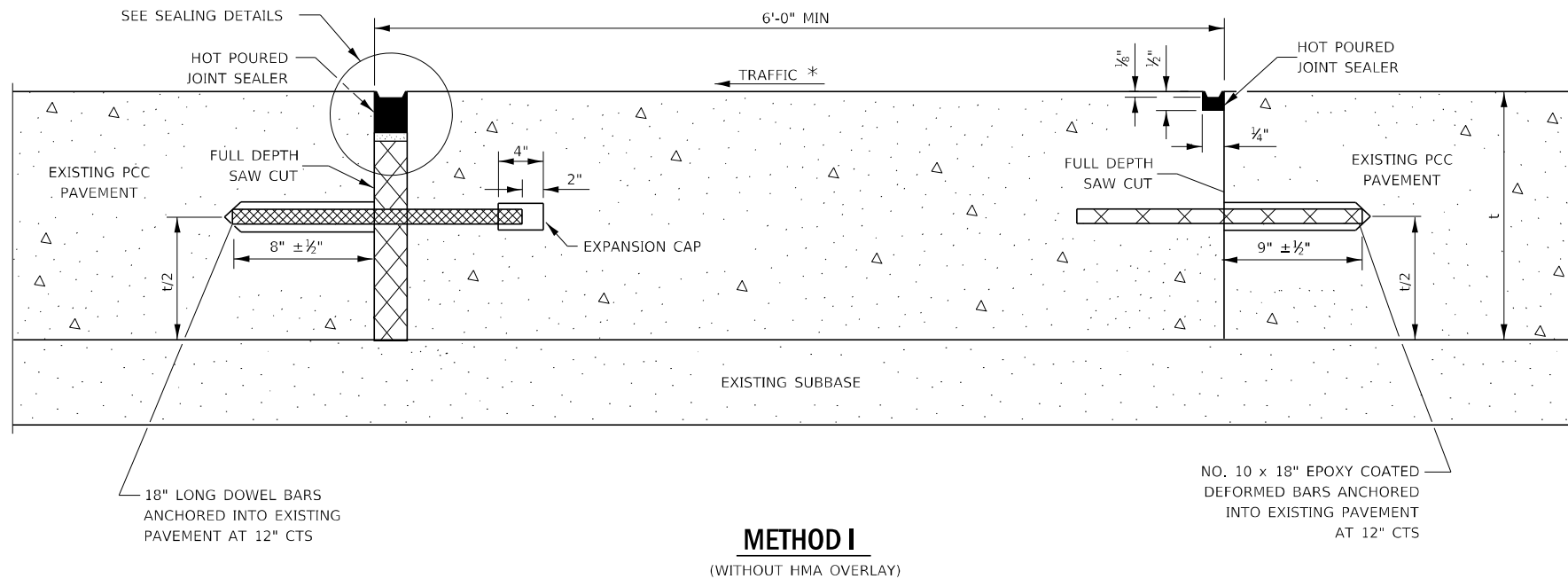
USER NAME = woodshank	DESIGNED - EVAN MARINI	REVISED -
PLOT SCALE = 100,0000' / in.	DRAWN - EVAN MARINI	REVISED -
PLOT DATE = 1/18/2022	CHECKED - RON WOODSHANK	REVISED -
	DATE - 1/22/2019	REVISED -

**STATE OF ILLINOIS  
DEPARTMENT OF TRANSPORTATION**

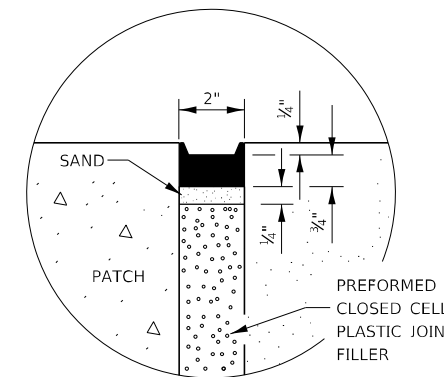
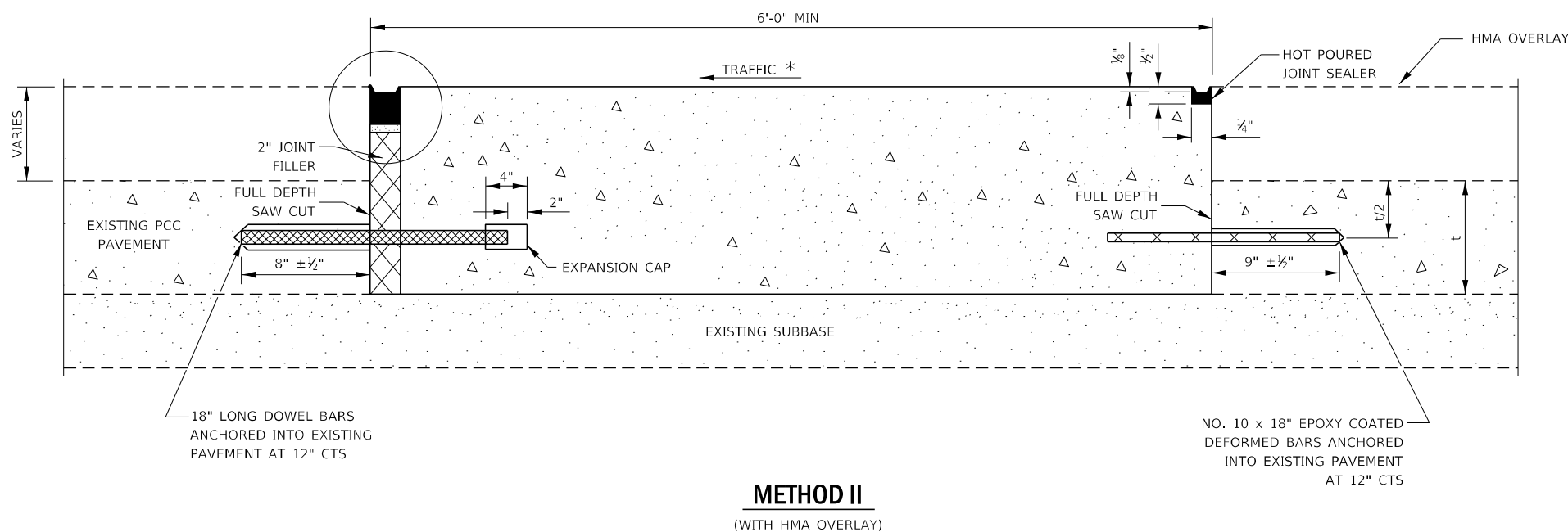
**CLASS B PATCHING DETAILS**

SCALE: SHEET 1 OF 2 SHEETS STA. TO STA.

F.A.P. RTE.	SECTION	COUNTY	TOTAL SHEETS	SHEET NO.
71	(113)PP-2	FORD	8	6
CONTRACT NO. 66M34				
ILLINOIS FED. AID PROJECT				



**SEALING DETAIL**



**SEALING DETAIL**

**NOTE**

\* WHEN RE-ESTABLISHING A TRANSVERSE EXPANSION JOINT ON A TWO-WAY ROAD, REVERSE THE ORIENTATION OF THE DOWEL BARS WITH RESPECT TO TRAFFIC FOR ONE OF THE PATCHES SUCH THAT THE JOINT WILL BE CONTINUOUS ACROSS BOTH LANES.

MODEL: Default  
FILE NAME: p:\bulletect-pw-bead-fy.com\PIV\DOT\Documents\DOT Office\Dir\drf: 3\Project\1036663\ACAD\Drawings\366M34 - PLANS.dgn

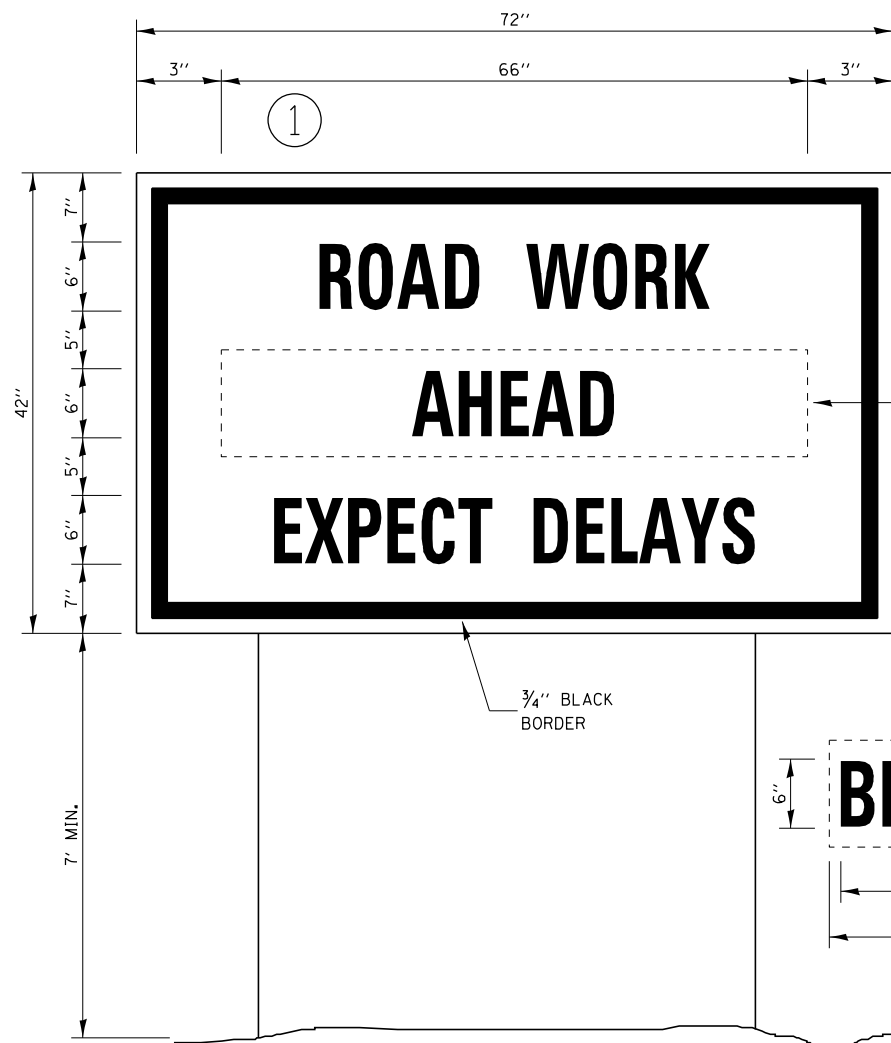
USER NAME = woodshank	DESIGNED - EVAN MARINI	REVISED -
PLOT SCALE = 100,0000' / in.	DRAWN - EVAN MARINI	REVISED -
PLOT DATE = 1/18/2022	CHECKED - RON WOODSHANK	REVISED -
	DATE - 1/22/2019	REVISED -

STATE OF ILLINOIS  
DEPARTMENT OF TRANSPORTATION

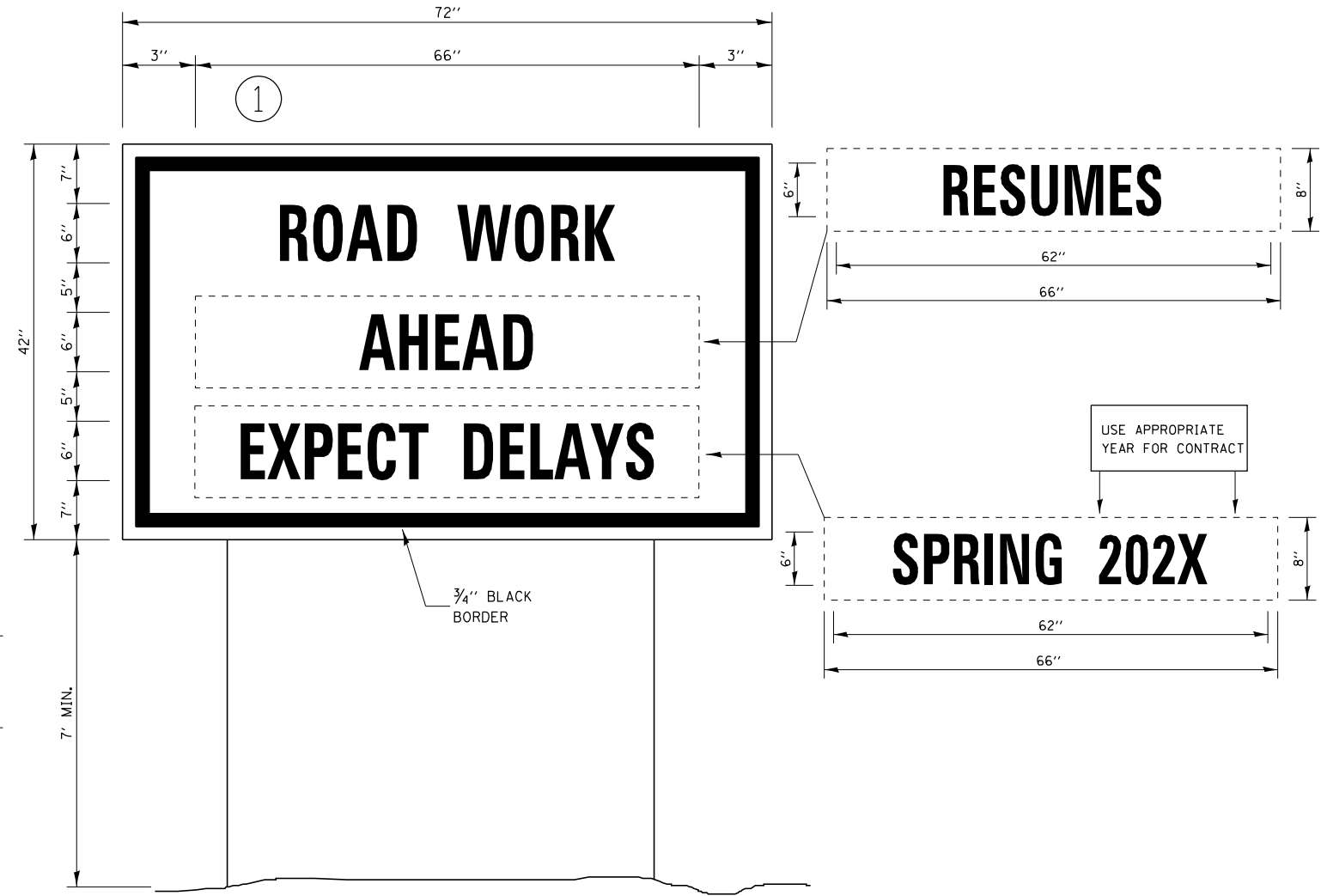
**CLASS B PATCHING DETAILS**

SCALE: SHEET 2 OF 2 SHEETS STA. TO STA.

F.A.P RTE.	SECTION	COUNTY	TOTAL SHEETS	SHEET NO.
71	(113)PP-2	FORD	8	7
CONTRACT NO. 66M34				
ILLINOIS FED. AID PROJECT				



**TEMPORARY INFORMATION SIGNING**



**WINTER SHUT DOWN SIGNING**

**NOTES:**

1. USE 6" D BLACK LETTERING ON FLOURESENT ORANGE BACKGROUND.
2. ERECT SIGNS AT LOCATIONS IN ADVANCE OF THE "ROAD CONSTRUCTION AHEAD" SIGNS AS DIRECTED BY THE ENGINEER.
3. ERECT SIGN ① WITH INSTALLED PANEL ② A MINIMUM OF ONE WEEK PRIOR TO THE START OF THE LANE CLOSURE.
4. REMOVE PANEL ② ON THAT DATE.
5. SEE SPECIAL PROVISION "TEMPORARY INFORMATION SIGNING" FOR ADDITIONAL INFORMATION.
6. WILL BE PAID FOR PER SQ FT AS "TEMPORARY INFORMATION SIGNING". EACH SIGN = 21 SQ FT AND THE DATE PANEL ② WILL NOT BE MEASURED SEPARATELY FOR PAYMENT.

FILE NAME =	USER NAME = woodshank1	DESIGNED - EVAN MARINI	REVISED -	<b>STATE OF ILLINOIS DEPARTMENT OF TRANSPORTATION</b>	<b>TEMPORARY INFORMATION SIGNING</b>			F.A.P. RTE.	SECTION	COUNTY	TOTAL SHEETS	SHEET NO.
pw:\illdot\pw\berkeley.com\PWIDOT\Documents\IDOT Office\District 3\Projects\3\66M34\CADData\366M34 - PLANS.dwg	DRAWN - EVAN MARINI	REVISIED -	71					(113)PP-2	FORD	8	8	
Default	PLOT SCALE = 100,0000 / in.	CHECKED - RON WOODSHANK	REVISED -		CONTRACT NO. 66M34							
	PLOT DATE = 1/18/2022	DATE - 1/22/2019	REVISED -		SCALE:	SHEET 1	OF 1	SHEETS	STA.	TO STA.	ILLINOIS	FED. AID PROJECT