

HIGHWAY STANDARDS

1. COVER SHEET
2. GENERAL NOTES
- 3 - 4. SUMMARY OF QUANTITIES
5. TYPICAL SECTION
- 6 - 7. SCHEDULES
8. TRAFFIC CONTROL AND PROTECTION, STANDARD 701400
9. TYPICAL PAVEMENT MARKING DETAILS

HIGHWAY STANDARDS

- | | |
|-----------|---|
| 000001-08 | STANDARD SYMBOLS, ABBREVIATIONS AND PATTERNS |
| 001006 | DECIMAL OF AN INCH AND OF A FOOT |
| 701401-13 | LANE CLOSURE, FREEWAY/EXPRESSWAY |
| 701411-09 | LANE CLOSURE, MULTILANE, AT ENTRANCE OR EXIT RAMP FOR SPEEDS ≥ 45 MPH |
| 701426-09 | LANE CLOSURE, MULTILANE INTERMITTENT OR MOVING OPERATION, FOR SPEEDS ≥ 45 MPH |
| 701428-01 | TRAFFIC CONTROL, SETUP AND REMOVAL, FREEWAY/EXPRESSWAY |
| 701901-08 | TRAFFIC CONTROL DEVICES |
| 781001-04 | TYPICAL APPLICATIONS RAISED REFLECTIVE PAVEMENT MARKERS |

**STATE OF ILLINOIS
DEPARTMENT OF TRANSPORTATION**

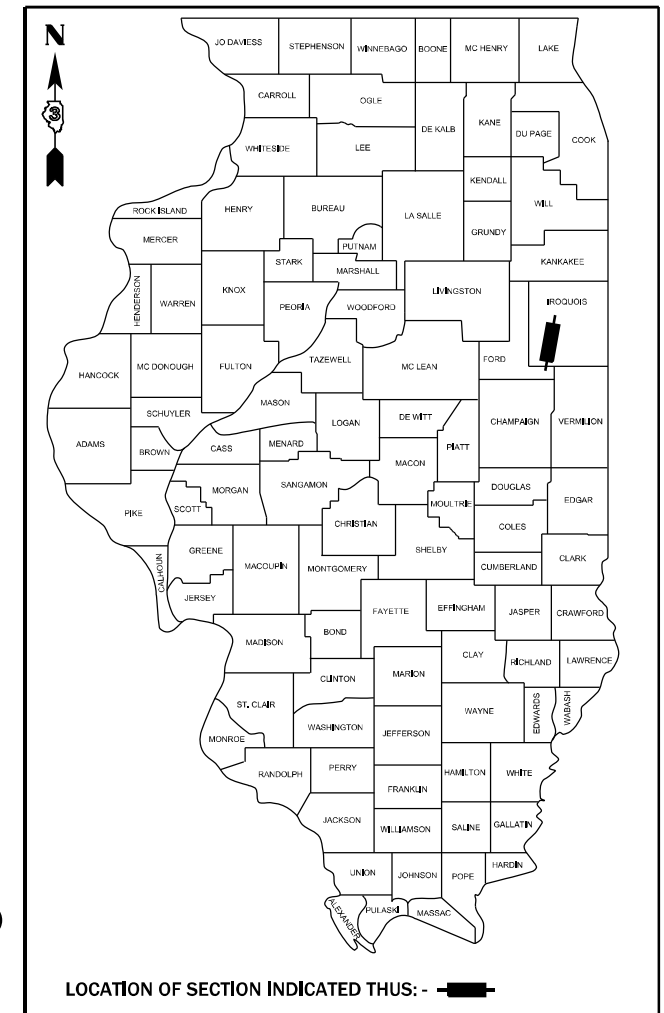
**PROPOSED
HIGHWAY PLANS**

**F.A.I. ROUTE 57 (I-57)
SECTION D3 INTERMITTENT RS 2022-1
INTERMITTENT MILLING AND RESURFACING
IROQUOIS COUNTY**

C-93-074-22

F.A.I. RTE.	SECTION	COUNTY	TOTAL SHEETS	SHEET NO.
57	D3 INTERMITTENT RS 2022-1	IROQUOIS	9	1
		ILLINOIS	CONTRACT NO. 66M49	

D-93-051-22



FUNCTIONAL CLASSIFICATION

RURAL INTERSTATE

F.A.I. ROUTE 57 (I-57)

2019 ADT = 17,900

P.V. 60.9 % S.U. 3.9 % M.U. 35.2 %

STATE OF ILLINOIS
DEPARTMENT OF TRANSPORTATION

SUBMITTED February 02, 2022

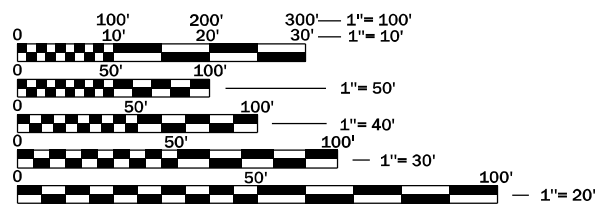
David Alwood
REGIONAL ENGINEER

March 25, 2022

[Signature]
ENGINEER OF DESIGN AND ENVIRONMENT

March 23, 2022

Stephen M. Smith
DIRECTOR OF HIGHWAYS PROJECT IMPLEMENTATION



FULL SIZE PLANS HAVE BEEN PREPARED USING STANDARD ENGINEERING SCALES. REDUCED SIZED PLANS WILL NOT CONFORM TO STANDARD SCALES. IN MAKING MEASUREMENTS ON REDUCED PLANS, THE ABOVE SCALES MAY BE USED.

J.U.L.I.E.
JOINT UTILITY LOCATION INFORMATION FOR EXCAVATION
1-800-892-0123
OR 811

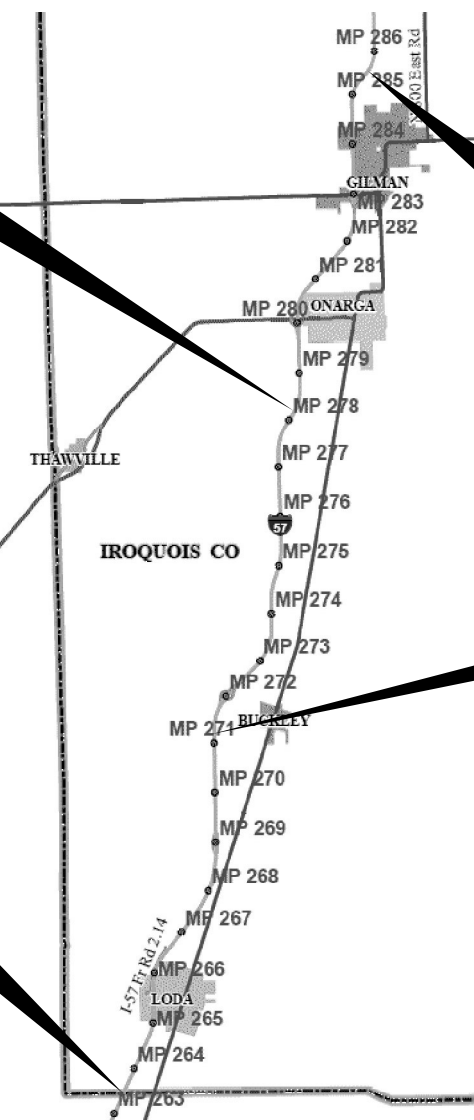
PROJECT ENGINEER: YOGESH PATEL P.E.
UNIT CHIEF: RON WOODSHANK
DISTRICT 3 NO. (815) 434-6131
CONTRACT NO. 66M49

BEGIN IMPROVEMENT
APPROXIMATELY 1.85 MILES SOUTH
OF IL 54 (ONARGA INTERCHANGE)
MILE MARKER 278.15

END IMPROVEMENT
APPROXIMATELY 2.45 MILES NORTH
OF US ROUTE 24 (GILMAN INTERCHANGE)
MILE MARKER 285.45

END IMPROVEMENT
APPROXIMATELY 7.79 MILES NORTH
OF THE FORD COUNTY LINE
MILE MARKER 271.30

BEGIN IMPROVEMENT
FORD COUNTY LINE
MILE MARKER 263.51



GROSS LENGTH = 79,675 FT. = 15.09 MILES
NET LENGTH = 13,992 FT. = 2.65 MILES

**PRINTED BY THE AUTHORITY
OF THE STATE OF ILLINOIS**

GENERAL NOTES

PLAN DIMENSIONS AND DETAILS RELATIVE TO EXISTING PLANS ARE SUBJECT TO NOMINAL CONSTRUCTION VARIATIONS. THE CONTRACTOR SHALL FIELD VERIFY EXISTING DIMENSIONS AND DETAILS AFFECTING NEW CONSTRUCTION AND MAKE NECESSARY APPROVED ADJUSTMENTS ADJUSTMENTS PRIOR TO CONSTRUCTION OR ORDERING OF MATERIALS. SUCH VARIATIONS SHALL NOT BE CAUSE FOR ADDITIONAL COMPENSATION FOR A CHANGE INSCOPE OF WORK; HOWEVER, THE CONTRACTOR WILL BE PAID FOR THE QUANTITY ACTUALLY FURNISHED AT THE UNIT PRICE BID FOR THE WORK.

THE ENGINEER WILL BE THE SOLE JUDGE CONCERNING CURING TIME FOR THE VARIOUS HOT-MIX ASPHALT LIFTS.

ALL EXCAVATED MATERIAL, WHICH INCLUDES DIGGING OR GRADING OF ANY SOIL OR FILL MATERIAL, WITH THE EXCEPTION OF AGGREGATE FILLS, MUST BE INCORPORATED WITH THE IDOT RIGHT OF WAY.

ON EXISTING PAVEMENT WHICH MAY BE SUPERELEVATED, THE NEW HMA PAVEMENT SHALL BE BUILT WITH THE SAME SUPERELEVATION UNLESS NEW SUPERTELEVATION RATES ARE GIVEN ON THE PLANS.

THE FOLLOWING RATES OF APPLICATION HAVE BEEN USED IN CLACULATING PLAN QUANTITIES

HMA RESURFACING	112	LBS / SQ YD / IN
SHORT TERM PAVEMENT MARKING	10	FT /100 FT OF APPLICATION
POLYMERIZED HMA BINDER (HAND METHOD)	0.0005	TONS / SQ YD
MIX FOR CRACKS, JTS & FLGWYS	0.0003	TONS / SQ YD

COMMITEMENT

STATE OF ILLINOIS
DEPARTMENT OF TRANSPORTATION
DISTRICT THREE
AS BUILT INFORMATION

SUPERVISING CONSTRUCTION FIELD ENGINEER

RESIDENT ENGINEER / TECHNICIAN

START & END DATES
OF CONSTRUCTION:

INSPECTORS:

STATE OF ILLINOIS
DEPARTMENT OF TRANSPORTATION
DISTRICT THREE

PREPARED BY: _____
DISTRICT STUDIES & PLANS ENGINEER

DATE: _____

EXAMINED BY: _____
DISTRICT CONSTRUCTION ENGINEER

DISTRICT MATERIALS ENGINEER

DISTRICT OPERATIONS ENGINEER

LOCATION(S):	ENTIRE PROJECT
MIXTURE USE(S):	POLYMERIZED HOT MIX ASPHALT SURFACE COURSE
BINDER GRADE (PG):	SBS-PG 76-28
DESIGN AIR VOIDS:	4.0% @ N90
MIXTURE COMPOSITION: (MIXTURE GRADATION)	IL 9.5
FRICTION AGGREGATE:	MIXTURE D
MIXTURE WEIGHT:	112.0 LB/SY/IN
QUALITY MANAGEMENT PROGRAM:	QC/QA
SUBLOT SIZE:	NA
DENSITY TEST METHOD:	CORES
MATERIAL TRANSFER DEVICE (REQUIRED)	NO

STATE OF ILLINOIS
DEPARTMENT OF TRANSPORTATION

GENERAL NOTES

SCALE: SHEET 1 OF 1 SHEETS STA. TO STA.

F.A.I. RTE.	SECTION	COUNTY	TOTAL SHEETS	SHEET NO.
57	D3 INTERMITTENT RS 2022-1	IROQUOIS	9	2
CONTRACT NO. 66M49			ILLINOIS FED. AID PROJECT	

MODEL: Default
 FILE NAME: p:\idirect-pw-bee\paw.com\PIV\DOT\Documents\IDOT Office\Dir\dir: 3\Project\036649\CADD\036649 - PLANS.dgn

CODE NO.	ITEM	UNIT	TOTAL QUANTITY	CONSTRUCTION CODE	
				STATE 100% ROADWAY	0005 RURAL
40600290	BITUMINOUS MATERIALS (TACK COAT)	POUND	9698	9698	
40600400	MIXTURE FOR CRACKS, JOINTS, AND FLANGEWAYS	TON	5.9	5.9	
40600907	POLYMERIZED HOT-MIX ASPHALT BINDER COURSE (HAND METHOD), N90	TON	10.6	10.6	
40604164	POLYMERIZED HOT-MIX ASPHALT SURFACE COURSE, IL-9.5, MIX "D", N90	TON	2414	2414	
44000157	HOT-MIX ASPHALT SURFACE REMOVAL, 2"	SQ YD	21543	21543	
67100100	MOBILIZATION	L SUM	1	1	
70100420	TRAFFIC CONTROL AND PROTECTION, STANDARD 701411	EACH	8	8	
70100800	TRAFFIC CONTROL AND PROTECTION, STANDARD 701401	L SUM	1	1	
70107025	CHANGEABLE MESSAGE SIGN	CAL DA	28	28	
70300100	SHORT TERM PAVEMENT MARKING	FOOT	1394	1394	
70300150	SHORT TERM PAVEMENT MARKING REMOVAL	SQ FT	470	470	
* 78008210	POLYUREA PAVEMENT MARKING TYPE I - LINE 4"	FOOT	1392	1392	
* 78008230	POLYUREA PAVEMENT MARKING TYPE I - LINE 6"	FOOT	3030	3030	
* 78008240	POLYUREA PAVEMENT MARKING TYPE I - LINE 8"	FOOT	530	530	

*= SPECIALTY ITEM

MODEL: Default
FILE NAME: p:\project-aw-bee\paw.com\p\w\DOT\Documents\DOT Office\Dir\dir: 3\Project\0366M49\CAD\DATA\0366M49 - PLANS.dgn

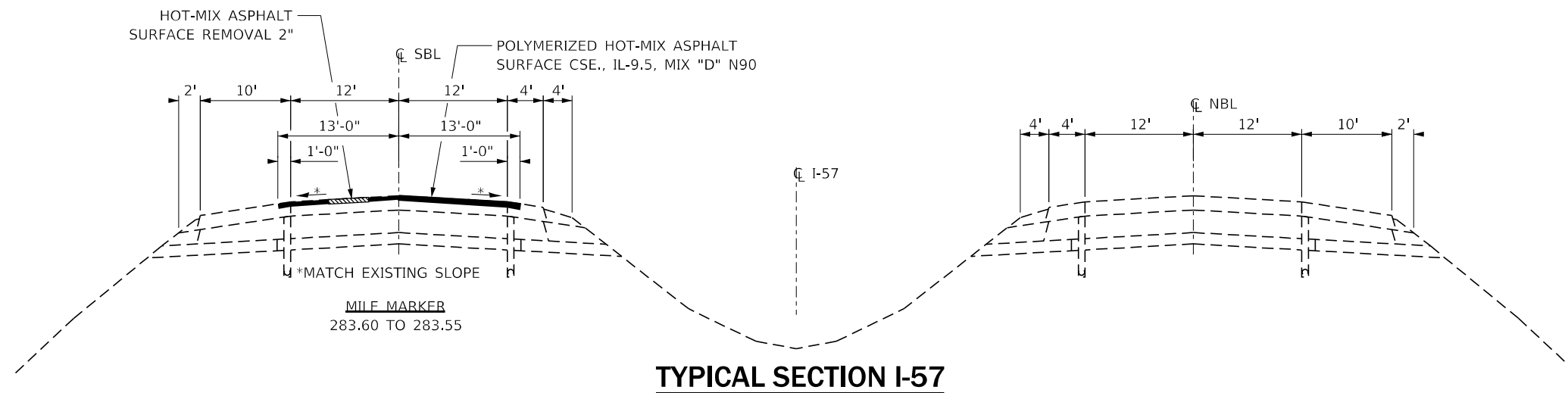
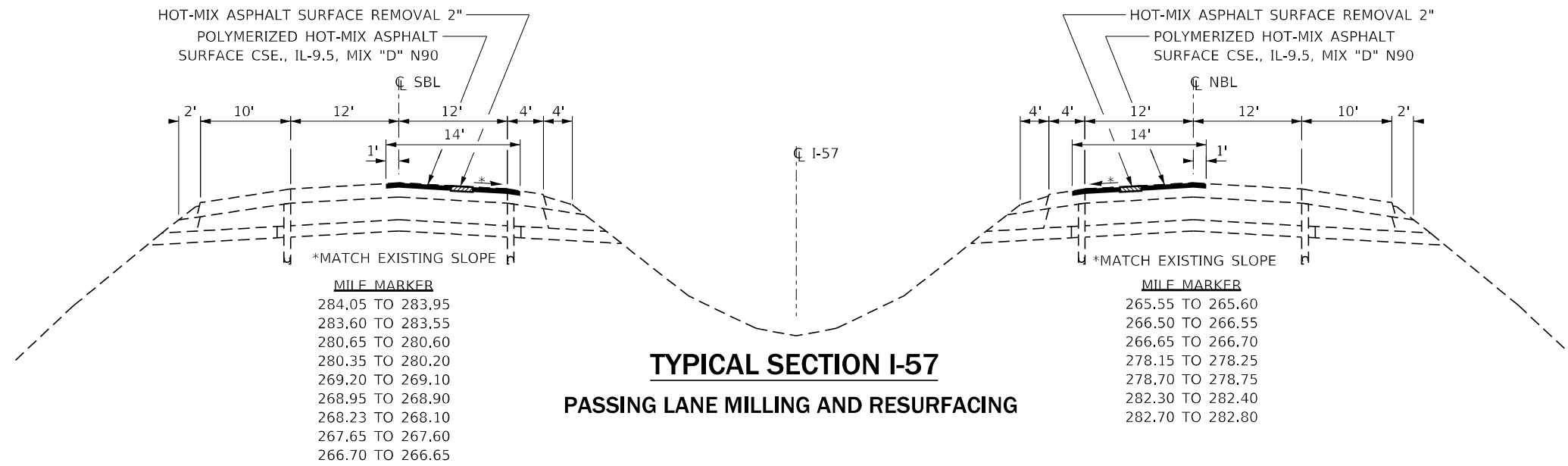
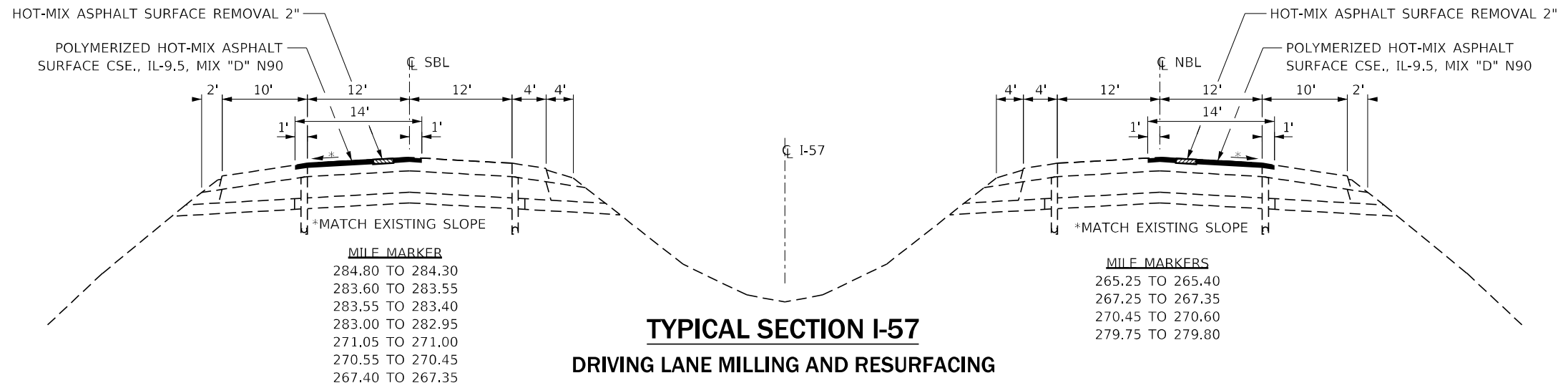
USER NAME = woodshank	DESIGNED - RW	REVISED -	STATE OF ILLINOIS DEPARTMENT OF TRANSPORTATION	SUMMARY OF QUANTITIES			F.A.I. RTE.	SECTION	COUNTY	TOTAL SHEETS	SHEET NO.
DRAWN - RW	REVISIONS -	57					D3 INTERMITTENT RS 2022-1	IROQUOIS	9	3	
PLOT SCALE = 100,0000' / in.	CHECKED - YP	REVISIONS -		SCALE:			CONTRACT NO. 66M49				
PLOT DATE = 2/2/2022	DATE - 1/28/2022	REVISIONS -		SHEET 1 OF 2 SHEETS	STA.	TO STA.	ILLINOIS FED. AID PROJECT				

CODE NO.	ITEM	UNIT	TOTAL QUANTITY	CONSTRUCTION CODE	
				STATE 100%	ROADWAY 0005 RURAL
* 78100100	RAISED REFLECTIVE PAVEMENT MARKER	EACH	213	213	
78300200	RAISED REFLECTIVE PAVEMENT MARKER REMOVAL	EACH	213	213	

*= SPECIALTY ITEM

MODEL: Default
 FILE NAME: p:\u0002\paw_bentley.com\P\I\DOT\Documents\DOT Office\Dir\rdt_3\Project\0366M49\CAD\Drawn\0366M49 - PLANS.dgn

USER NAME = woodshank	DESIGNED - RW	REVISED -	STATE OF ILLINOIS DEPARTMENT OF TRANSPORTATION	SUMMARY OF QUANTITIES				F.A.I. RTE.	SECTION	COUNTY	TOTAL SHEETS	SHEET NO.
DRAWN - RW	REVISIED -	57						D3 INTERMITTENT RS 2022-1	IROQUOIS	9	4	
PLOT SCALE = 100,0000 ' / in.	CHECKED - YP	REVISED -		CONTRACT NO. 66M49								
PLOT DATE = 2/2/2022	DATE - 1/28/2022	REVISED -		SCALE:	SHEET 2 OF 2 SHEETS	STA.	TO STA.	ILLINOIS	FED. AID PROJECT			



MODEL: Default
 FILE: \\nafe-pw-backend.com\P\DOT\Documents\DOT Office\Dir\dr: 3\Project\366449\CADD\366449 - PLANS.dgn

USER NAME = woodshank	DESIGNED - RW	REVISED -
DRAWN - RW	REVISIONS -	
PLOT SCALE = 100,0000' / in.	CHECKED - YP	REVISIONS -
PLOT DATE = 2/2/2022	DATE - 1/28/2022	REVISIONS -

**STATE OF ILLINOIS
DEPARTMENT OF TRANSPORTATION**

TYPICAL SECTIONS

SCALE: SHEET 1 OF 1 SHEETS STA. TO STA.

F.A.I. RTE.	SECTION	COUNTY	TOTAL SHEETS	SHEET NO.
57	D3 INTERMITTENT RS 2022-1	IROQUOIS	9	5
ILLINOIS FED. AID PROJECT			CONTRACT NO. 66M49	

MAINLINE SCHEDULE

DIRECTION & LOCATION	MILE MARKERS		LENGTH	WIDTH	HOT-MIX ASPHALT SURFACE REMOVAL 2"	BITUMINOIS MATERIALS (TACK COAT)	MIX FOR JOINTS CRACKS AND FLANGEWAYS	POLYMERIZED HOT-MIX ASPHALT BINDER COURSE (HAND METHOD) N90	POLYMERIZED HOT-MIX ASPHALT SURFACE COURSE IL 9.5 MIX "D" N90
					SQ YD	POUND	TON	POUND	TON
NORTHBOUND									
DRIVING LANE	265.25	TO 265.40	792	14	1232	554	0.4	0.6	138
PASSING LANE	265.55	TO 265.60	264	14	411	185	0.1	0.2	46
PASSING LANE	266.50	TO 266.55	264	14	411	185	0.1	0.2	46
PASSING LANE	266.65	TO 266.70	264	14	411	185	0.1	0.2	46
DRIVING LANE	267.25	TO 267.35	528	14	821	370	0.2	0.4	92
DRIVING LANE	270.45	TO 270.60	792	14	1232	554	0.4	0.6	138
PASSING LANE	278.15	TO 278.25	528	14	821	370	0.2	0.4	92
PASSING LANE	278.70	TO 278.75	264	14	411	185	0.1	0.2	46
DRIVING LANE	279.75	TO 279.80	264	14	411	185	0.1	0.2	46
PASSING LANE	282.30	TO 282.40	528	14	821	370	0.2	0.4	92
PASSING LANE	282.70	TO 282.80	528	14	821	370	0.2	0.4	92
NORTHBOUND TOTAL			5016	154	7803	3513	2.1	3.8	874
SOUTHBOUND									
DRIVING LANE	284.80	TO 284.30	2640	14	4107	1848	1.2	2.1	460
PASSING LANE	284.05	TO 283.95	528	14	821	370	0.2	0.4	92
PASSING LANE	283.60	TO 283.55	264	13	381	172	0.1	0.2	43
DRIVING LANE	283.60	TO 283.55	264	13	381	172	0.1	0.2	43
DRIVING LANE	283.55	TO 283.40	792	14	1232	554	0.4	0.6	138
DRIVING LANE	283.00	TO 282.95	264	14	411	185	0.1	0.2	46
PASSING LANE	280.65	TO 280.60	264	14	411	185	0.1	0.2	46
PASSING LANE	280.35	TO 280.20	792	14	1232	554	0.4	0.6	138
DRIVING LANE	271.05	TO 271.00	264	14	411	185	0.1	0.2	46
DRIVING LANE	270.55	TO 270.45	528	14	821	370	0.2	0.4	92
PASSING LANE	269.20	TO 269.10	528	14	821	370	0.2	0.4	92
PASSING LANE	268.95	TO 268.90	264	14	411	185	0.1	0.2	46
PASSING LANE	268.23	TO 268.10	686	14	1067	480	0.3	0.5	120
PASSING LANE	267.65	TO 267.60	264	14	411	185	0.1	0.2	46
DRIVING LANE	267.40	TO 267.35	264	14	411	185	0.1	0.2	46
PASSING LANE	266.70	TO 266.65	264	14	411	185	0.1	0.2	46
SOUTHBOUND TOTAL			8870	222	13740	6185	3.8	6.8	1540
GRAND TOTAL			13886	376	21543	9698	5.9	10.6	2414

MODEL: Default
 FILE: mainline_schedule.dwg
 PROJECT: D:\Projects\DOT\Office\Drawings\Projects\66M49\66M49 - PLANS.dwg

USER NAME = woodshank	DESIGNED - RW	REVISED -
	DRAWN - RW	REVISED -
PLOT SCALE = 100,0000' / in.	CHECKED - YP	REVISED -
PLOT DATE = 2/2/2022	DATE - 1/28/2022	REVISED -

STATE OF ILLINOIS
DEPARTMENT OF TRANSPORTATION

SCHEDULES

SCALE: SHEET 1 OF 2 SHEETS STA. TO STA.

F.A.I. RTE.	SECTION	COUNTY	TOTAL SHEETS	SHEET NO.
57	D3 INTERMITTENT RS 2022-1	IROQUOIS	9	6
			CONTRACT NO. 66M49	
		ILLINOIS	FED. AID PROJECT	

PAVEMENT MARKING SCHEDULE

DIRECTION & LOCATION			POLYUREA PAV'T MARKING TYPE 1 4"		POLYUREA PAV'T MARKING TYPE 1 6"	POLYUREA PAV'T MARKING TYPE 1 8"		RAISED REFLECT PAVT MARKERS		SHORT TERM PAVT MARK	SHORT TERM PAVT MARK REMOVAL
			WHITE	YELLOW	WHITE	WHITE		INSTALL	REMOVAL	(1 APP)	(1 APP)
			EDGE LINE	EDGE LINE	CENTER LINE	LANE LINE	SKIP-DASH				
DIRECTION	MILE MARKERS	FOOT	FOOT	FOOT			EACH	EACH	FOOT	SQ FT	
NORTHBOUND											
DRIVING LANE	265.25 TO 265.40	792		200			20	20	79	26	
PASSING LANE	265.55 TO 265.60		264	70			7	7	26	9	
PASSING LANE	266.50 TO 266.55		264	70			7	7	26	9	
PASSING LANE	266.65 TO 266.70		264	70			7	7	26	9	
DRIVING LANE	267.25 TO 267.35	528		140			14	14	53	18	
DRIVING LANE	270.45 TO 270.60	792		200			20	20	79	26	
PASSING LANE	278.15 TO 278.25		528	140			14	14	53	18	
PASSING LANE	278.70 TO 278.75		264	70			7	7	26	9	
DRIVING LANE	279.75 TO 279.80	264		70	430	100	7	7	26	9	
PASSING LANE	282.30 TO 282.40		528	140					53	18	
PASSING LANE	282.70 TO 282.80		528	140					53	18	
NORTHBOUND SUBTOTAL		2,376	2,640	1,310	430	100	103	103	500	169	
SOUTHBOUND											
DRIVING LANE	284.80 TO 284.30	2640		140					264	88	
PASSING LANE	284.05 TO 283.95		528	140					53	18	
PASSING LANE	283.60 TO 283.55		264	70					26	9	
DRIVING LANE	283.60 TO 283.55	264		70					26	9	
PASSING LANE	283.55 TO 283.40		792	200					79	26	
DRIVING LANE	283.00 TO 282.95	264		70					26	9	
PASSING LANE	280.65 TO 280.60		264	70			7	7	26	9	
PASSING LANE	280.35 TO 280.20		792	200			20	20	79	26	
DRIVING LANE	271.05 TO 271.00	264		70			7	7	26	9	
DRIVING LANE	270.55 TO 270.45	528		140			14	14	53	18	
PASSING LANE	269.20 TO 269.10		528	140			14	14	53	18	
PASSING LANE	268.95 TO 268.90		264	70			7	7	26	9	
PASSING LANE	268.25 TO 268.10		792	200			20	20	79	26	
PASSING LANE	267.65 TO 267.60		264	70			7	7	26	9	
DRIVING LANE	267.40 TO 267.35	264		70			7	7	26	9	
PASSING LANE	266.70 TO 266.65		264	70			7	7	26	9	
SOUTHBOUND SUBTOTALS		4224	4752	1720			110	110	894	301	
GRAND TOTALS		6600	7392	3030	430	100	213	213	1394	470	

MODEL: Default
 FILE: \\mfrs-pw-beadley.com\FW\DOT\Documents\DOT_Offices\Dir\ref: 3\Project\366M49\CADD\366M49 - PLANS.dgn

USER NAME = woodshank	DESIGNED - RW	REVISED -
	DRAWN - RW	REVISED -
PLOT SCALE = 100,0000' / in.	CHECKED - YP	REVISED -
PLOT DATE = 2/2/2022	DATE - 1/28/2022	REVISED -

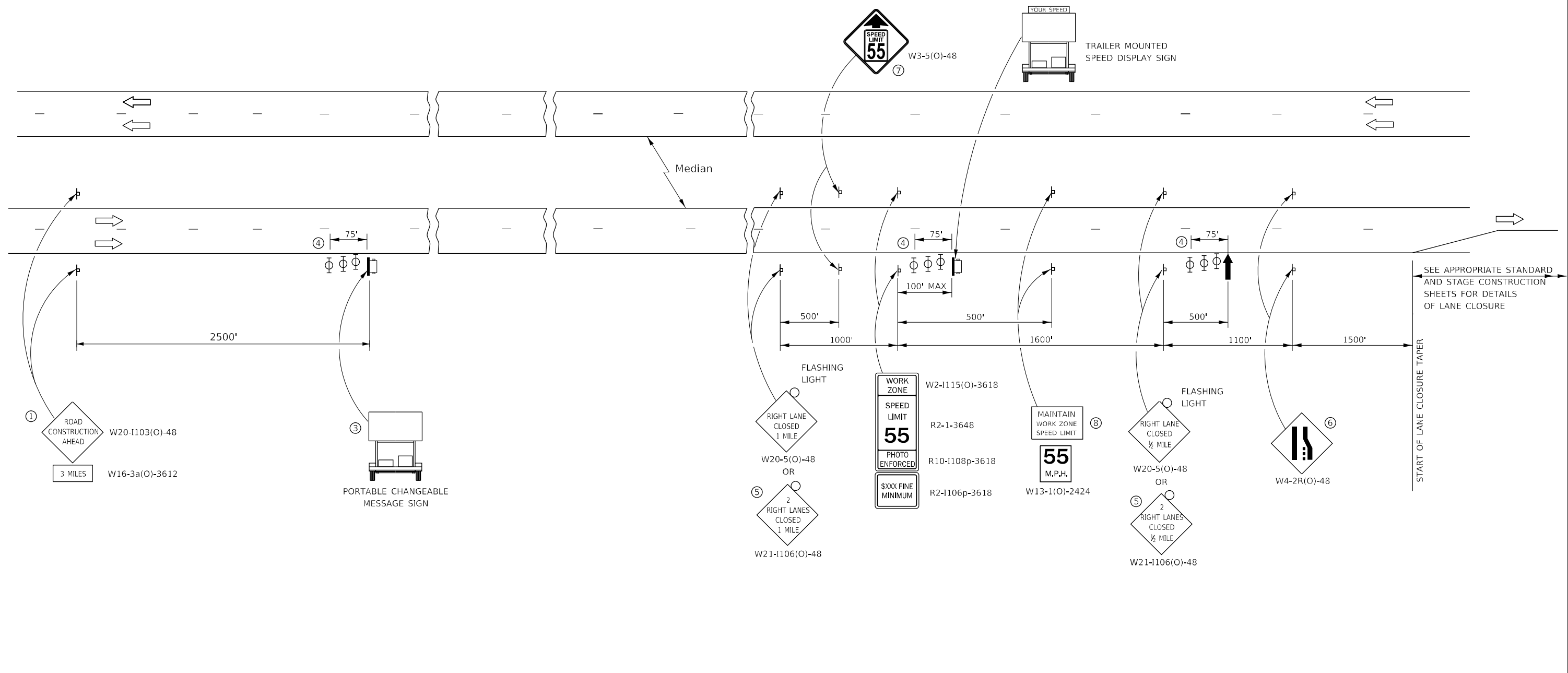
**STATE OF ILLINOIS
DEPARTMENT OF TRANSPORTATION**

SCHEDULES

SCALE: SHEET 2 OF 2 SHEETS STA. TO STA.

F.A.I. RTE.	SECTION	COUNTY	TOTAL SHEETS	SHEET NO.
57	D3 INTERMITTENT RS 2022-1	IROQUOIS	9	7
			CONTRACT NO. 66M49	
		ILLINOIS	FED. AID PROJECT	

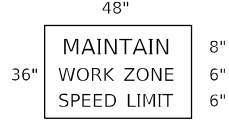
MODEL: Default
 FILE NAME: p:\p\project-aw-beadley.com\FW\DOT\Documents\DOT Office\Drawings\Project\0366M49\CADD\0366M49 - PLANS.dgn
 PROJECT: 0366M49



SEE APPROPRIATE STANDARD AND STAGE CONSTRUCTION SHEETS FOR DETAILS OF LANE CLOSURE

- ① THE ROAD CONSTRUCTION AHEAD SIGN SHALL BE LOCATED 3 MILES IN ADVANCE OF THE PROJECT LIMITS.
- ② THE MESSAGE AND SIZE OF THE WORK ZONE PUBLIC INFORMATION SIGN SHALL BE AS SPECIFIED BY THE DEPARTMENT.
- ③ TO BE PLACED IN THE MEDIAN WHEN FEASIBLE. THE MESSAGE BOARD SHALL BE USED TO DISPLAY STATUS OF LANES WITHIN THE PROJECT. THE PRIMARY MESSAGES SHALL BE:
 "RIGHT LANE CLOSED" / " x MILES AHEAD"
 "LEFT LANE CLOSED" / " x MILES AHEAD"
 "ALL LANES OPEN"
- ④ THREE, TYPE II BARRICADES, DRUMS, OR VERTICAL BARRICADES AT 25' CENTERS.
- ⑤ THIS SIGN SHALL BE USED WHEN 2 LANES ARE CLOSED.
- ⑥ WHEN THE LEFT LANE IS CLOSED, SWITCH THESE TWO SIGNS AND THE DIRECTION OF THE MERGE ARROW.
- ⑦ THIS SIGN SHALL ONLY BE USED IF THE EXISTING SPEED LIMIT IS GREATER THAN 65 MPH.

⑧ 48"x36" FLUORESCENT ORANGE SIGN WITH BLACK LETTERS.



- ↑ ARROW BOARD
- ☐ PORTABLE CHANGEABLE MESSAGE SIGN
- ⊥ SIGN
- ⊕ TYPE II BARRICADE, DRUM, OR VERTICAL BARRICADE WITH MONODIRECTIONAL FLASHING LIGHT

GENERAL NOTE:

THIS STANDARD IS USED WHERE AT ANY TIME A LANE IS CLOSED ON A FREEWAY/EXPRESSWAY.

WHEN THE LEFT LANE IS CLOSED, LEFT LANE CLOSED SIGNS SHALL BE SUBSTITUTED FOR THE RIGHT LANE CLOSED SIGNS.

THE FIRST TWO SIGNS AND THE MESSAGE BOARD ARE STATIONARY. THE OTHER SIGNS AND ARROWBOARDS SHALL BE MOVED AS NECESSARY TO MAINTAIN THE REQUIRED DISTANCE FROM THE START OF THE LANE CLOSURE TAPER(S).

SEE SPECIAL PROVISIONS.

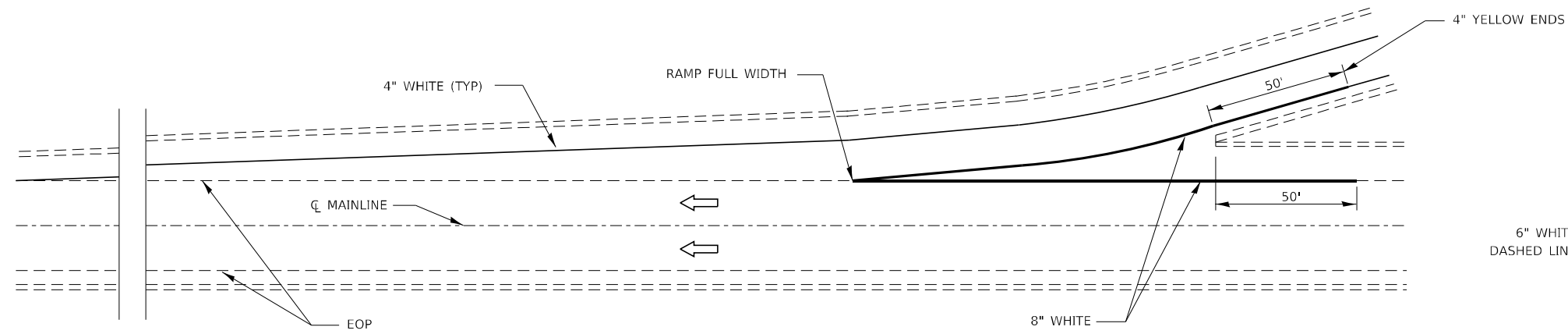
USER NAME = woodshank	DESIGNED - RW	REVISED -
	DRAWN - RW	REVISED -
PLOT SCALE = 100,000' / in.	CHECKED - YP	REVISED -
PLOT DATE = 2/2/2022	DATE - 1/28/2022	REVISED -

**STATE OF ILLINOIS
DEPARTMENT OF TRANSPORTATION**

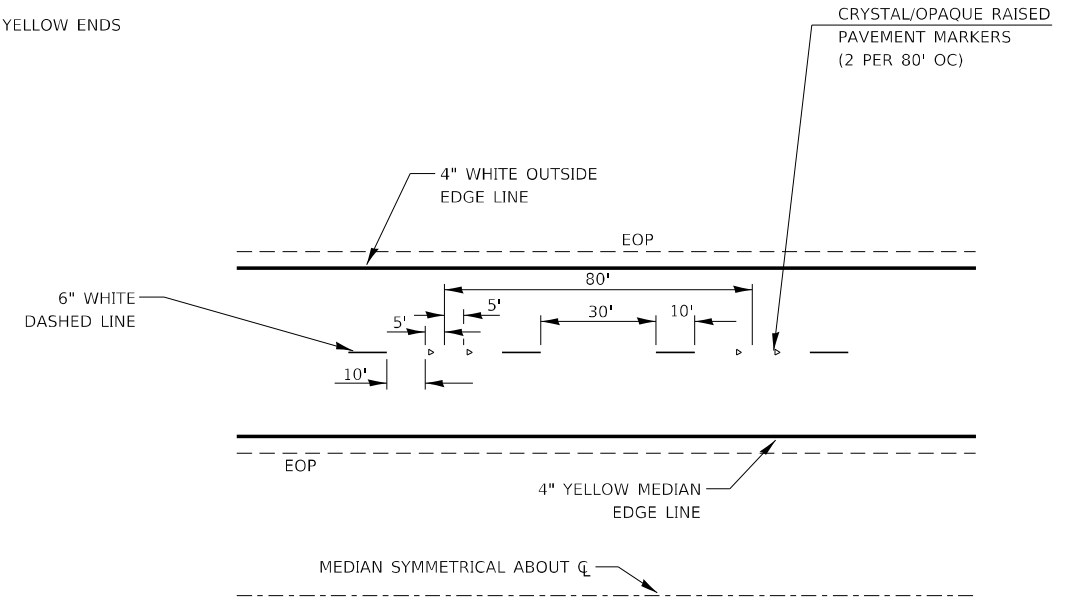
TRAFFIC CONTROL AND PROTECTION, STANDARD 701400

SCALE: SHEET 1 OF 1 SHEETS STA. TO STA.

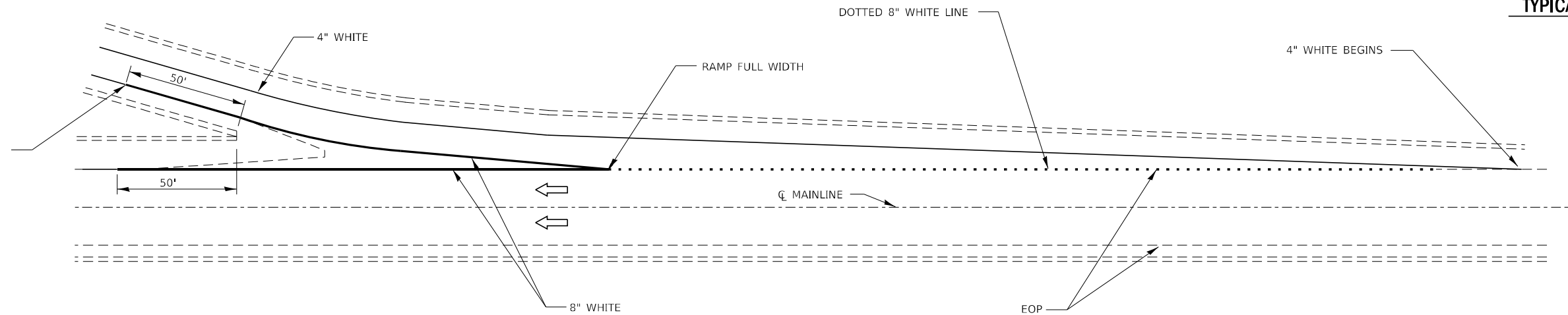
F.A.I. RTE.	SECTION	COUNTY	TOTAL SHEETS	SHEET NO.
57	D3 INTERMITTENT RS 2022-1	IROQUOIS	9	8
			CONTRACT NO. 66M49	
ILLINOIS FED. AID PROJECT				



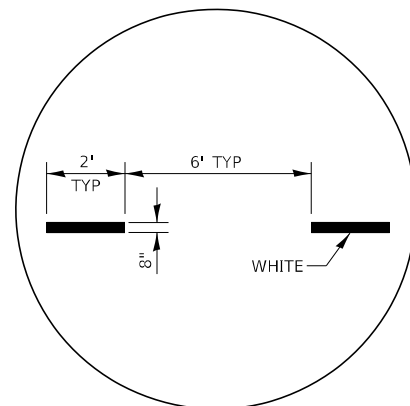
TYPICAL PAVEMENT MARKING FOR ENTRANCE RAMP TERMINALS



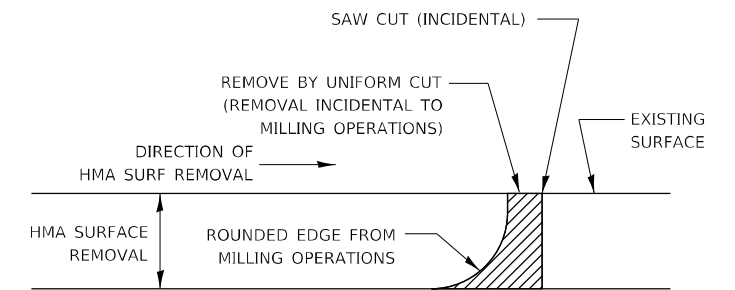
TYPICAL PAVEMENT MARKINGS



TYPICAL PAVEMENT MARKINGS FOR EXIT RAMP TERMINALS



INTERSTATE RAMP TRANSITION LINE



NOTE:
 WHEN MILLING OPERATIONS PRODUCE A ROUNDED EDGE, THEN A SAW CUT SHALL BE USED TO MANUFACTURE A PERPENDICULAR EDGE AS SHOWN IN THE DETAIL. THE ENGINEER SHALL BE THE SOLE JUDGE CONCERNING THE USE OF THIS DETAIL

HMA DETAIL AT BUTT JOINTS

MODEL: Default
 FILE NAME: p:\u005cuser\paw_bentley.com\p1\DOT\Documents\1\DOT Office\Drawings\3\Project\1\366448\CADD\Drawings\PLANS.dgn

USER NAME = woodshank	DESIGNED - RW	REVISED -
	DRAWN - RW	REVISED -
PLOT SCALE = 100,0000' / in.	CHECKED - YP	REVISED -
PLOT DATE = 2/2/2022	DATE - 1/28/2022	REVISED -

**STATE OF ILLINOIS
 DEPARTMENT OF TRANSPORTATION**

PAVEMENT MARKING DETAILS

SCALE: SHEET 1 OF 1 SHEETS STA. TO STA.

F.A.I. RTE.	SECTION	COUNTY	TOTAL SHEETS	SHEET NO.
57	D3 INTERMITTENT RS 2022-1	IROQUOIS	9	9
ILLINOIS FED. AID PROJECT			CONTRACT NO. 66M49	