

INDEX OF SHEETS: 04-29-2022 LETTING ITEM 036

- 1 COVER SHEET
- 2 COMMITMENTS AND JOB SPECIFIC NOTES
- 3-4 SUMMARY OF QUANTITIES
- 5-6 SCHEDULE OF QUANTITIES
- 7 LINE DIAGRAM
- 8 TYPICAL SECTIONS
- 9 INTERSECTION DETAIL
- 10-11 DISTRICT STANDARDS

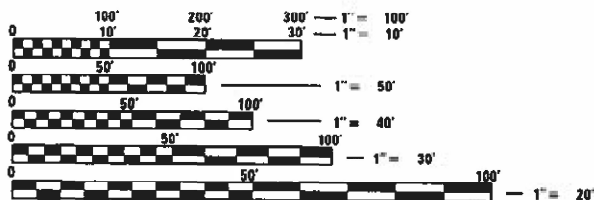
HIGHWAY STANDARDS

- 701301-04
- 701306-04
- 701311-03
- 701901-08
- 780001-05
- 781001-04

DISTRICT STANDARDS

780001

ADT = 7,400 (2019)
 %SU = 7.77 (2019)
 %MU = 3.72 (2019)



FULL SIZE PLANS HAVE BEEN PREPARED USING STANDARD ENGINEERING SCALES. REDUCED SIZED PLANS WILL NOT CONFORM TO STANDARD SCALES. IN MAKING MEASUREMENTS ON REDUCED PLANS, THE ABOVE SCALES MAY BE USED.

J.U.L.I.E.
 JOINT UTILITY LOCATION INFORMATION FOR EXCAVATION
 1-800-892-0123
 OR 811

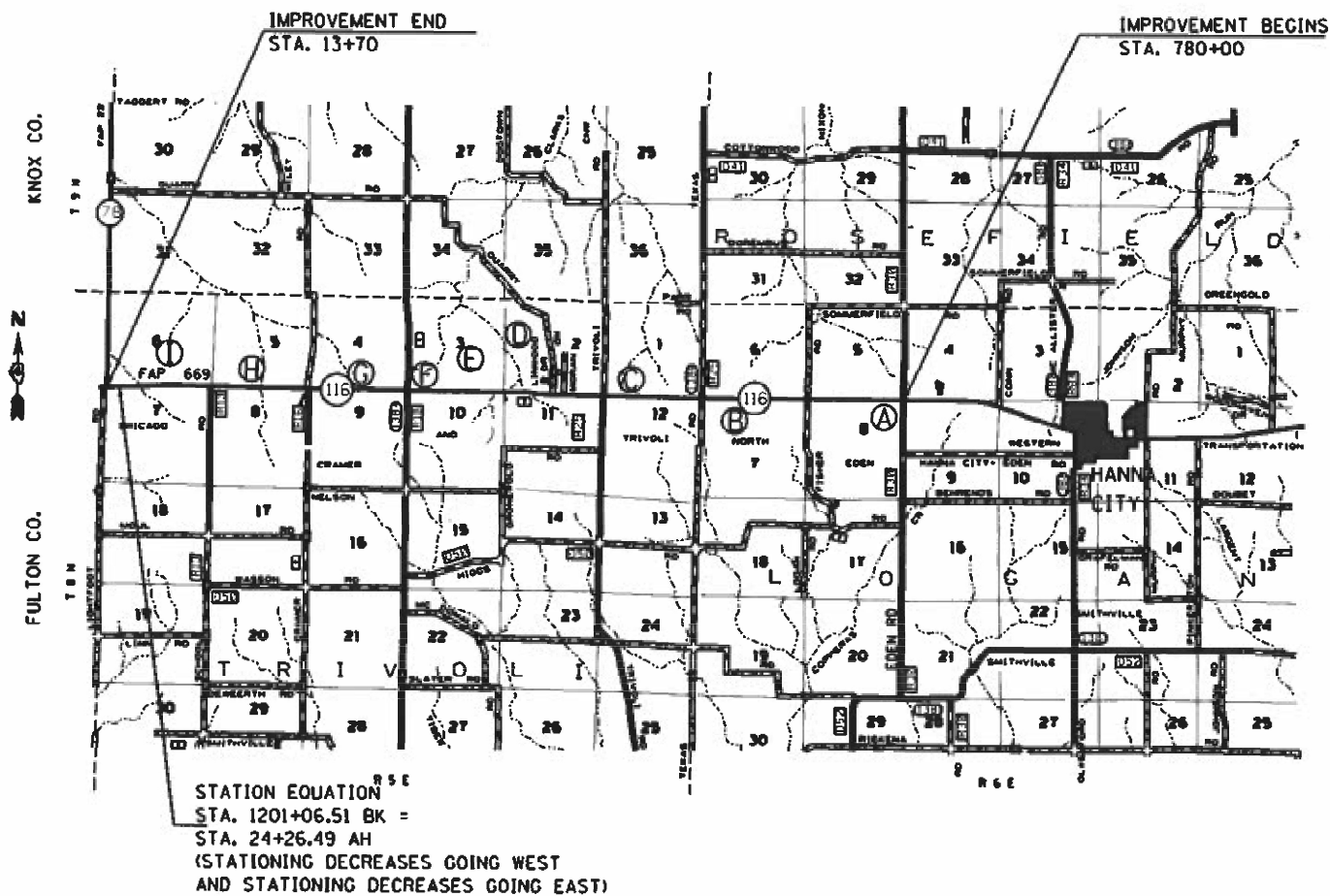
STATE OF ILLINOIS

DEPARTMENT OF TRANSPORTATION

DIVISION OF HIGHWAYS

**PROPOSED
 HIGHWAY PLANS**

F.A.P. ROUTE 669 (IL 116)
 SECTION (17,16)RS-5;15RS-8
 PROJECT NHPP-YB5F (857)
 PAVEMENT PRESERVATION
 PEORIA COUNTY
 C-94-055-21



STATION EQUATION
 STA. 1201+06.51 BK =
 STA. 24+26.49 AH
 (STATIONING DECREASES GOING WEST
 AND STATIONING DECREASES GOING EAST)

F.A.P. RTE.	SECTION	COUNTY	TOTAL SHEETS	SHEET NO.
669	(17,16)RS-5;15RS-8	PEORIA	11	1
		ILLINOIS	CONTRACT NO. 68G34	

D-94-036-21



LOCATION OF SECTION INDICATED THUS: -

DESCRIPTION OF WORK:
 MICROSURFACING (1-PASS) ON IL 116 FROM IL 78(N) IN FARMINGTON TO EDEN ROAD.

STATE OF ILLINOIS
 DEPARTMENT OF TRANSPORTATION

SUBMITTED Jan 20 20 22
Kennel A. Farneth RSD
 REGIONAL ENGINEER

March 25 20 22
[Signature]
 ENGINEER OF DESIGN AND ENVIRONMENT

March 23 20 22
[Signature]
 DIRECTOR OF HIGHWAYS PROJECT IMPLEMENTATION

PROJECT ENGINEER RICH DOTSON (309-671-3455)
 PROJECT MANAGER MICHAEL JACOB (309-671-3460)
 CATALOG NO. 036200-00D
 CONTRACT NO. 68G34

GROSS LENGTH = 42556.8 FT. = 8.06 MILES
 NET LENGTH = 42556.8 FT. = 8.06 MILES

**PRINTED BY THE AUTHORITY
 OF THE STATE OF ILLINOIS**

MICRO-SURFACING SINGLE PASS							
LOCATION				LENGTH	WIDTH	AREA	
MAINLINE				FT	FT	SQ.YD	
780+00	AH	TO	794+00	BK	1400	24	3733.3
794+16	AH	TO	874+54	BK	8038	24	21435
874+57	AH	TO	943+00	BK	6843	24	18248
942+95	AH	TO	988+27	BK	4532	24	12085
988+43	AH	TO	996+60	BK	817	24	2178.7
996+42	AH	TO	1041+29	BK	4486	24	11963
1041+29	AH	TO	1043+00	BK	171	VAR	520
1043+09	AH	TO	1055+57	BK	1248	VAR	4895
1055+57	AH	TO	1079+00	BK	2343	24	6248
1078+92	AH	TO	1131+74	BK	5282	24	14085
1131+75	AH	TO	1183+15	BK	5140	24	13707
1183+21	AH	TO	1201+06	BK	1785	24	4760
024+26	AH	TO	020+00	BK	426	VAR	2961
020+00	AH	TO	014+00	BK	600	VAR	5338
014+00	AH	TO	013+70	BK	30	37	123.3
TOTAL							122280

POLYMERIZED BITUMIN MATERIALS (TACK COAT)							
LOCATION				LENGTH	WIDTH	AREA	
MAINLINE				FT	FT	.025LBS/SQ.FT	
780+00	AH	TO	794+00	BK	1400	24	840
794+16	AH	TO	874+54	BK	8038	24	4822.8
874+54	AH	TO	943+00	BK	6843	24	4105.8
943+00	AH	TO	988+27	BK	4532	24	2719.2
988+43	AH	TO	996+60	BK	817	24	4902
996+42	AH	TO	1041+29	BK	4486	24	2691.6
1041+29	AH	TO	1043+00	BK	171	VAR	38.475
1043+09	AH	TO	1055+57	BK	1248	VAR	280.8
1055+57	AH	TO	1079+00	BK	2342	24	1405.2
1078+92	AH	TO	1131+74	BK	5287	24	3172.2
1131+75	AH	TO	1183+15	BK	5139	24	3083.4
1183+21	AH	TO	1201+06	BK	1785	24	1071
024+26	AH	TO	020+00	BK	426	VAR	95.85
020+00	AH	TO	014+00	BK	600	VAR	135
014+00	AH	TO	013+70	BK	30	37	27.75
TOTAL							29391

PAINT PAVEMENT MARKING												
LOCATION				SKIP-DASH	SOLID SINGLE	SOLID DOUBLE	SOLID SINGLE	SOLID SINGLE	SOLID SINGLE	SOLID SINGLE	SOLID SINGLE	(LETTERS AND SYMBOLS)
STATION	TO	STATION	DESCRIPTION	SINGLE YELLOW	YELLOW	YELLOW	WHITE	WHITE	YELLOW	WHITE	WHITE	
				4"	4"	4"	4"	8"	12"	12"	24"	
780+00.00	TO	1041+29.06	BEGINNING TO STONE SCHOOL RD. INTERSECTION	6004	4978	3476	51993	0	0	0	0	SF
1041+29.06	TO	1055+57.96	STONE SCHOOL RD. INTERSECTION	0	0	4682	2848	200	262	0	0	0
1055+57.96	TO	1201+06.51	NE SCHOOL RD. INTERSECTION TO ILL116/1L 78 INTERSEC	3328	4909	2268	29097	0	0	0	0	62
024+26.49	TO	013+70.00	ILL 116/IL 78 INTERSECTION	0	0	3148	2113	820	166	156	124	0
SUB-TOTAL				9332	9887	13574	86051	1020	428	156	124	156
TOTAL TWO APPLICATION								2040	1168		248	218
					118844				584		124	436
					237688							

PAVEMENT MARKING REMOVAL -WATER BLASTING	
LOCATION	SQ FT.
STA. 780+00 TO STA. 13+70	41563
TOTAL	41563

FIBER-MODIFIED ASPHALT CRACK SEALING*	
LOCATION	LENGTH FT
STA. 780+00 TO STA. 13+70	1000
TOTAL	1000

*ROUT AND SEAL TRANSVERSE (WORKING) CRACKS AND SEAL LONGITUDINAL CRACKS

BUMP REMOVAL	
LOCATION	EACH
STA. 780+00 TO STA. 13+70	25
TOTAL	25

MODEL: D:\p\h\k
 FILE NAME: p\k\illinois\pav_bentley.com\p\p\DOT\Documents\DOT_Office\District_APP\Project\116_68G34\CADD\TACK\Sheet116A.dwg - sh-cover.dwg

USER NAME = lewisr	DESIGNED -	REVISED -
PLOT SCALE = 100 9750 / in	DRAWN -	REVISED -
PLOT DATE = 2/1/2022	CHECKED -	REVISED -
	DATE -	REVISED -

STATE OF ILLINOIS
DEPARTMENT OF TRANSPORTATION

SCHEDULE OF QUANTITIES

SCALE: SHEET OF SHEETS STA. TO STA.

F.A.P RTE.	SECTION	COUNTY	TOTAL SHEETS	SHEET NO.
669	(17.16)RS-5:15RS-8	PEORIA	11	5

CONTRACT NO: 68G34
ILLINOIS FED. AID PROJECT

MOBILIZATION	
LOCATION	LSUM
JOB SITE	1
TOTAL	1

RAISED REFLECTIVE PAVEMENT MARKER REMOVAL	
LOCATION	EACH
STA. 780+00 TO STA. 13+70	687
TOTAL	687

RAISED REFLECTIVE PAVEMENT MARKER	
LOCATION	EACH
STA. 780+00 TO STA. 13+70	687
TOTAL	687

TRAFFIC CONTROL AND PROTECTION STANDARD 701306	
LOCATION	LSUM
JOB SITE	1
TOTAL	1

SHORT TERM PAVEMENT MARKING REMOVAL		
LOCATION	LENGTH	AREA
	FT	SQ FT
STA. 780+00 TO STA. 13+70	4316	1439
TOTAL	4316	1439

SHORT TERM PAVEMENT MARKING	
LOCATION	LENGTH
	FT
STA. 780+00 TO STA. 13+70	4316
TOTAL	4316

CHANGEABLE MESSAGE SIGN	
LOCATION	CAL DAY
JOBSITE	
2 SIGNS @ 5 DAYS EACH	10
TOTAL	10

MODEL: D:\c\bit
 FILE NAME: p:\w\dot\Documents\DOT - Office\District - al\Project\104 68G34\CADD\JAN\Drawings\104xxxxx\sheet.dgn

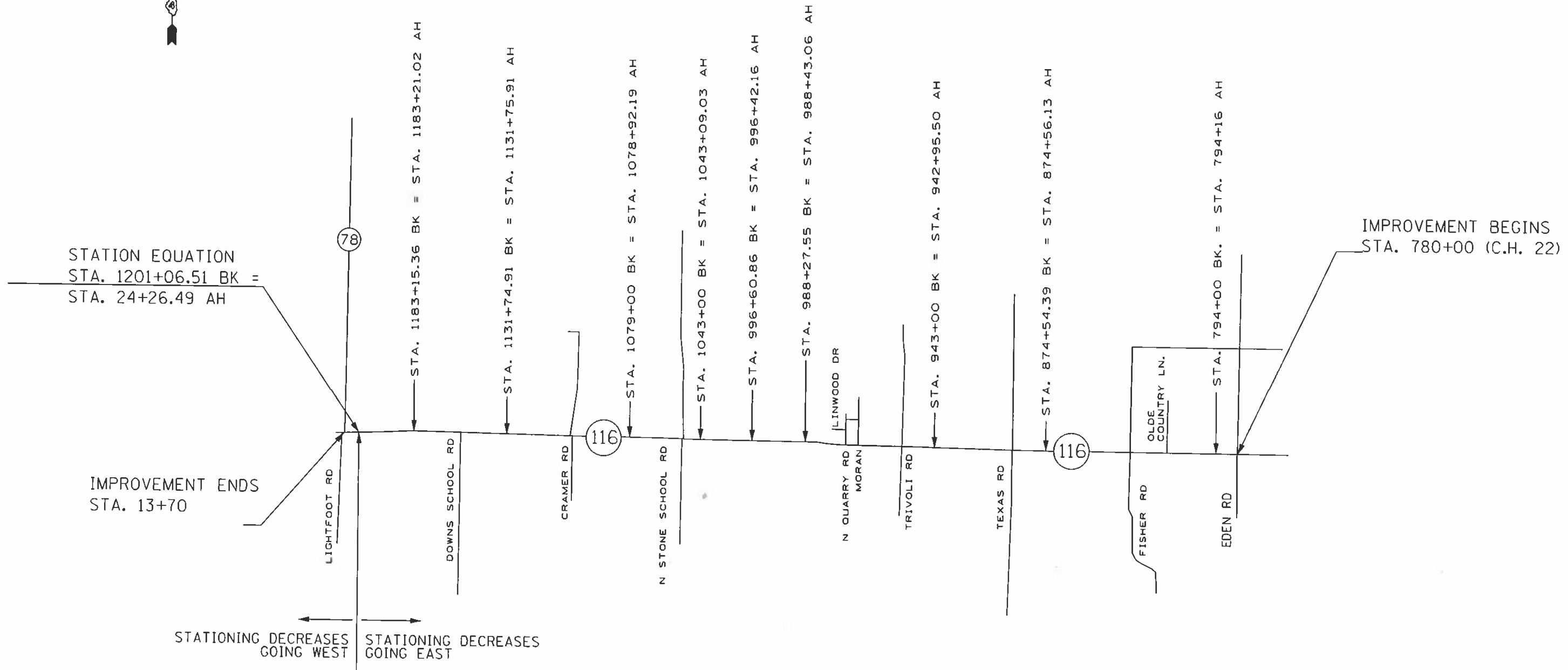
USER NAME = KHANALS	DESIGNED -	REVISED -
PLOT SCALE = 100.0000 1/4" = 1'	DRAWN -	REVISED -
PLOT DATE = 9/28/2021	CHECKED -	REVISED -
	DATE -	REVISED -

STATE OF ILLINOIS
DEPARTMENT OF TRANSPORTATION

SCHEDULE OF QUANTITIES

SCALE SHEET OF SHEETS STA. TO STA.

F.A.P. RTE	SECTION	COUNTY	TOTAL SHEETS	SHEET NO.
669	(17,16)RS-5,15RS-8	PEORIA	11	6
CONTRACT NO: 68G34				
ILLINOIS FED. AID PROJECT				



FILE NAME :	USER NAME : KHANALS	DESIGNED -	REVISED -
p:\planroom_dot_illinois.gov\pw1001\Docu	ents\1001\Offices\District 4\Projects\04.68	DRAWN -	REVISED -
Default		CHECKED -	REVISED -
		DATE -	REVISED -

**STATE OF ILLINOIS
 DEPARTMENT OF TRANSPORTATION**

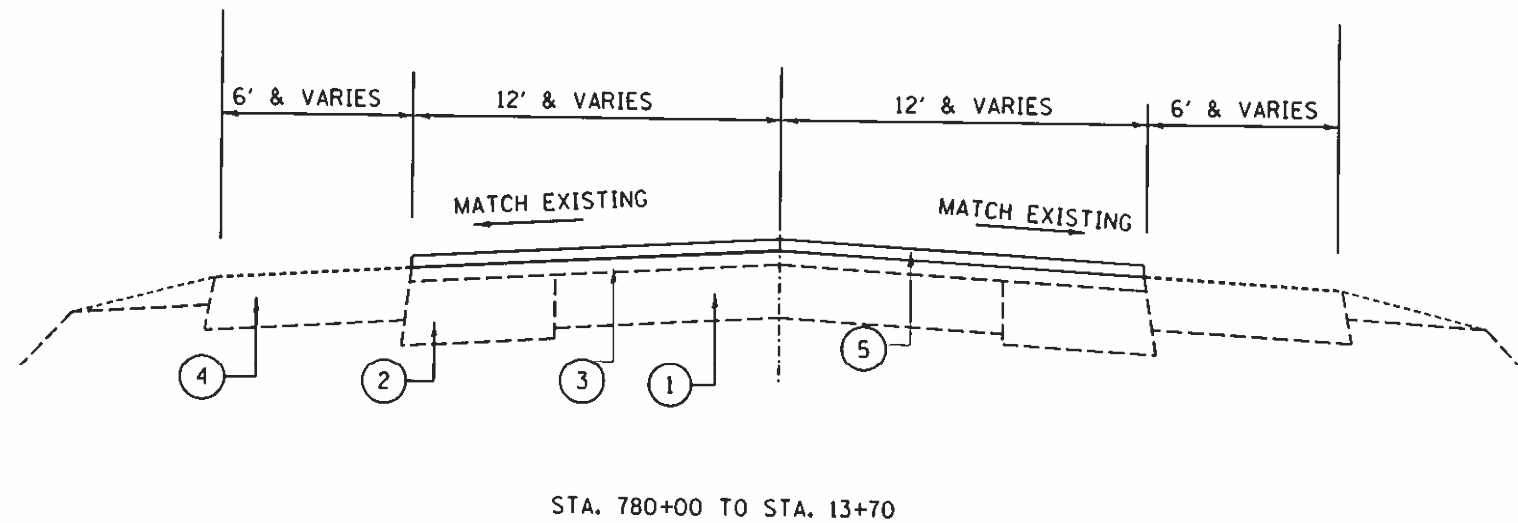
**IL ROUTE 116
 LINE DIAGRAM**

SCALE: SHEET OF SHEETS STA. TO STA.

F.A. RTE.	SECTION	COUNTY	TOTAL SHEETS	SHEET NO.
669	(17.16)RS-5:15RS-8	PEORIA	11	7

CONTRACT NO. 68G34

(ILLINOIS) FED. AID PROJECT



LEGEND:

- ① EXISTING P.C.C. PAVEMENT
- ② EXISTING BITUMINOUS BASE COURSE WIDENING
- ③ EXISTING HOT-MIX ASPHALT OVERLAY
- ④ EXISTING HOT-MIX ASPHALT SHOULDERS
- ⑤ PROPOSED MICROSURFACING

STATION EQUATIONS

- STA. 794+00.00 BK. =
STA. 794+16.00 AH.
- STA. 874+54.39 BK. =
STA. 874+56.13 AH.
- STA. 943+00.00 BK. =
STA. 942+95.50 AH.
- STA. 988+27.55 BK. =
STA. 988+43.06 AH.
- STA. 996+60.86 BK. =
STA. 996+42.16 AH.
- STA. 1043+00.00 BK. =
STA. 1043+09.03 AH.
- STA. 1079+00.00 BK. =
STA. 1078+92.19 AH.
- STA. 1131+74.91 BK. =
STA. 1131+75.91 AH.
- STA. 1183+15.36 BK. =
STA. 1183+21.02 AH.
- STA. 1201+06.51 BK. =
STA. 24+26.49 AH.

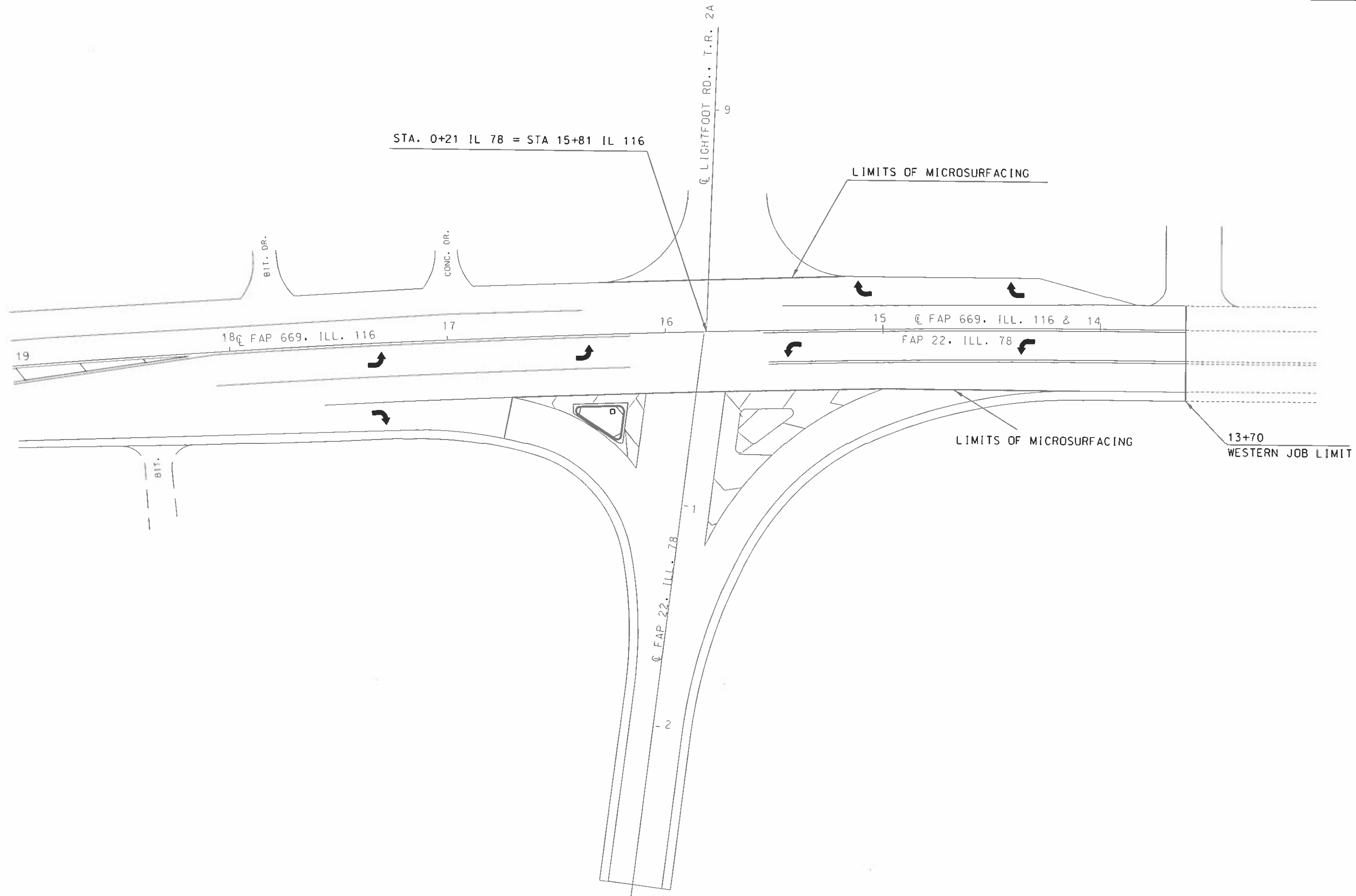
FILE NAME =	USER NAME = KHARIALS	DESIGNED =	REVISED =
p:\planroom\dot.illinois.gov\p\1001\Documents\1001_District 4\Projects\04.68	BROWN	CHECKED =	REVISED =
Default:	PLOT SCALE = 100,0000 / in.	DATE =	REVISED =
	PLOT DATE = 7/28/2021		

**STATE OF ILLINOIS
DEPARTMENT OF TRANSPORTATION**

**TYPICAL SECTION
ILLINOIS ROUTE 116**

SCALE: SHEET OF SHEETS STA. TO STA.

F.A. RTE.	SECTION	COUNTY	TOTAL SHEETS	SHEET NO.
669	(17.16)RS 5.15RS-8	PEORIA	11	8
CONTRACT NO: 68G34				
ILLINOIS FED. AID PROJECT				



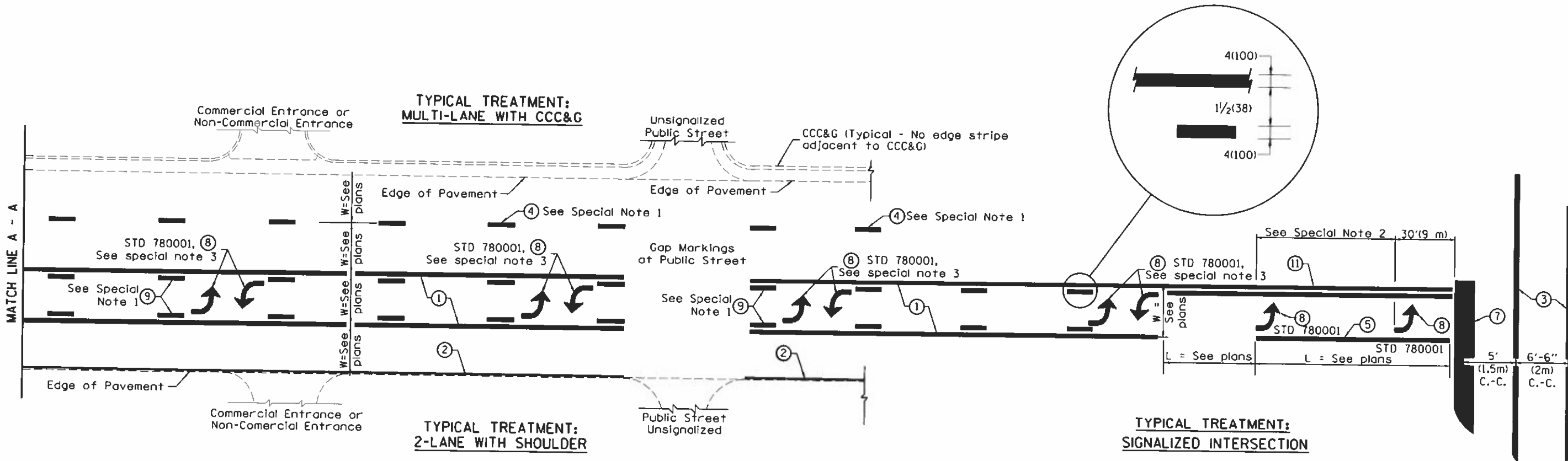
FILE NAME -	USER NAME - KHANALS	DESIGNED -	REVISED -
S:\GEN\DRFT\STD&PLNS\SDUAD3\6BA78 IL	116 Resurf\DDG\6BA78 - Mer.s.dgn	DRAWN -	REVISED -
Default	PLOT SCALE = 100.0000	CHECKED -	REVISED -
	PLOT DATE = 7/28/2021	DATE -	REVISED -

**STATE OF ILLINOIS
DEPARTMENT OF TRANSPORTATION**

INTERSECTION PAVING DETAIL			
IL 116			
SCALE:	SHEET	OF SHEETS	STA. TO STA.

F.A.P. RTE.	SECTION	COUNTY	TOTAL SHEETS	SHEET NO.
669	117,16RS-5+15RS-B	PEORIA	11	9
CONTRACT NO. 68C34				

ILLINOIS FED. AID PROJECT



FLUSH PAVED MEDIAN: TWO-WAY LEFT TURN LANE WITH ONE-WAY LEFT TURN LANE AT SIGNALIZED INTERSECTION

TYPICAL PAVEMENT MARKING LEGEND

(Note: This is a District Standard Legend. Some elements may not apply to specific project.)

- ① 4(100) Solid (Yellow)
- ② 4(100) Solid (White)
- ③ 2-6(150) Crosswalk @ 6'-6" (2m)min C.-C. (White)
2-8(200) Crosswalk @ 6'-6" (2m)min C.-C. (White) (When traffic signals are present.)
- ④ 6(150) Skip-Dash (White) (See Special Note 1)
- ⑤ 8(200) Solid (White)
- ⑥ 12(300) Diagonal (White) (Item ⑥ is shown on Std. 780001)
- ⑦ 24(600) Stop Bar (White)
- ⑧ Letters & Arrows (See Std. 780001 and Special Notes 2 & 3)
- ⑨ 4(100) Skip-Dash (Yellow) (See Special Note 1)
- ⑩ 12(300) Diagonal (Yellow) (See Table A)
- ⑪ 4(100) Double Solid (Yellow) (See Table A)

SPECIAL NOTES

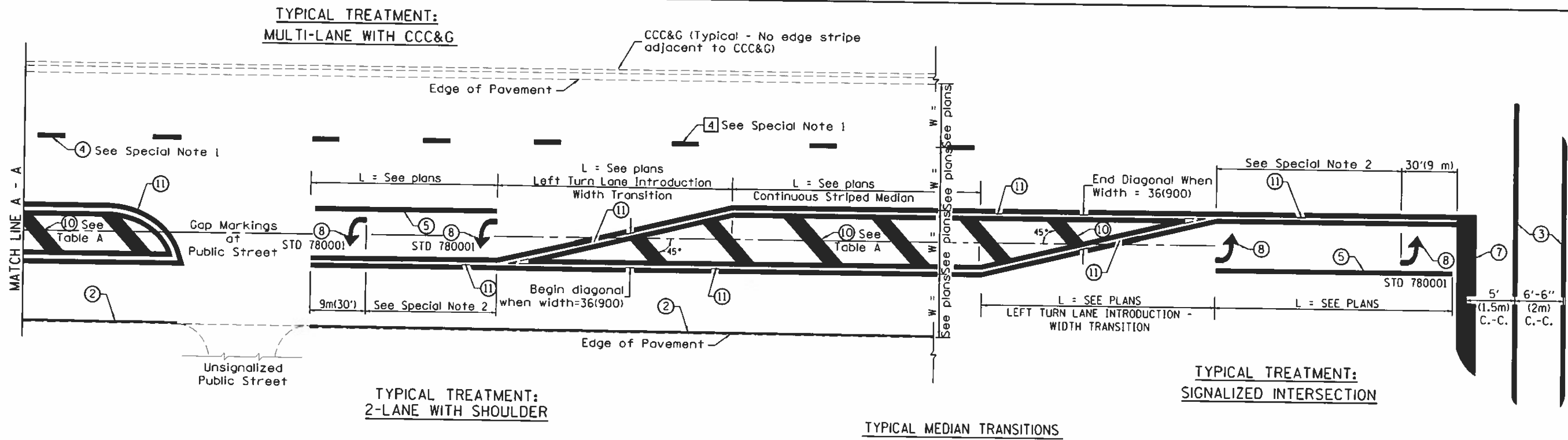
1. Skip-Dash markings will be centered between both ends of city blocks and shall be placed in alignment transversely across the pavement.
2. The following shall apply to arrows located in one-way left turn lanes:
 - A. A minimum of two (2) arrows is required.
 - B. The maximum spacing between arrows is 80' (24 m).
 - C. Arrows shall be evenly spaced if three (3) or more are required.
3. The following shall apply to arrow pairs located in two-way left turn lanes:
 - A. A minimum of two (2) arrow pairs is required.
 - B. The maximum spacing between arrow pairs is 200' (61 m).
 - C. Arrow pairs shall be evenly spaced if three (3) or more are required.
 - D. The spacing between Bi Directional Left Turn Arrows is 33' (10 m).

GENERAL NOTES

1. Refer to State Standard 780001 for additional Pavement Markings including letters & arrows.
2. See Plans for Pavement Markings adjacent to curbed islands and medians, and through lane reductions.

DESIGNER NOTES: 1. Include State Standard 780001 (Typical Pavement Markings)

01-01-97	RENUM. F-8.03, NEW REVISION BOX	T.P.	10-16-06	REVISED TO 2007 SPEC.	STATE OF ILLINOIS DEPARTMENT OF TRANSPORTATION	TYPICAL PAVEMENT MARKINGS	F.A. RTE.	SECTION	COUNTY	TOTAL SHEETS	SHEET NO.
02-07-97	ADD BI DIRECTIONAL DIMENSION	J.A.					639	(17,16)RS-5-15RS-8	PEORIA	11	10
10-97	CORRECT BI DIRECTIONAL DIMENSION	J.A.									
08-02	ADD CROSSWALK DIMS. WITH T.S.	M.A.									
						NOT TO SCALE	SHT. 1 OF 2 CADD STD. 780001-04	FED. ROAD DIST. NO. (ILLINOIS)FED. AID PROJECT	CONTRACT NO. 68G34		



TYPICAL TREATMENT:
MULTI-LANE WITH CCC&G

TYPICAL TREATMENT:
2-LANE WITH SHOULDER

TYPICAL TREATMENT:
SIGNALIZED INTERSECTION

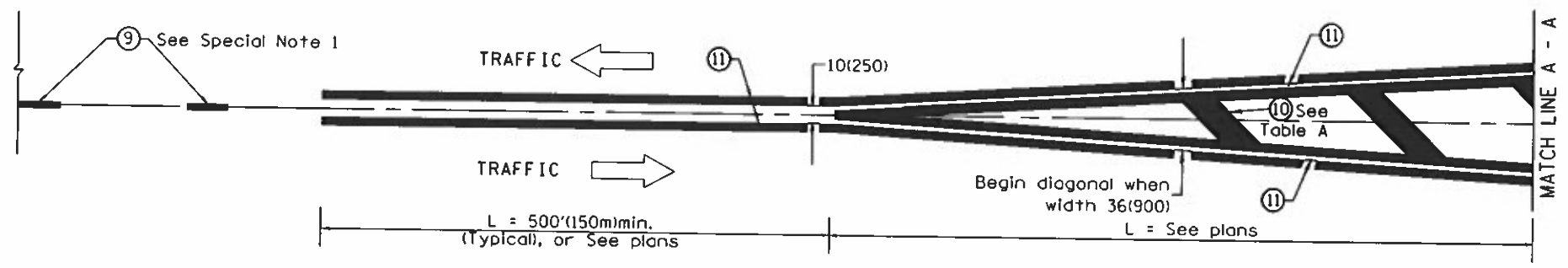
TYPICAL MEDIAN TRANSITIONS

FLUSH PAVED MEDIAN: RESTRICTED LEFT TURN LANE

TABLE A

RECOMMENDED SPACING BETWEEN DIAGONAL LINES

SPEED LIMIT RANGE	INTERSECTION CHANNELIZATION (Includes Width Transitions for Median and Left Turn Lane Introductions)	
	CONTINUOUS	
Less Than 30 mph (50 km/h)	50' (15m)	15' (5m)
30 - 45 mph (50 - 70 km/h)	75' (23m)	20' (6m)
Over 45 mph (70 km/h)	150' (46m)	30' (9m)



MEDIAN INTRODUCTION - WIDTH TRANSITIONS

All dimensions are in inches (millimeters) unless otherwise noted.

STATE OF ILLINOIS
DEPARTMENT OF TRANSPORTATION

TYPICAL PAVEMENT MARKINGS

NOT TO SCALE

SHT. 2 OF 2
CADD STD. 780001-04

F.A. RTE.	SECTION	COUNTY	TOTAL SHEETS	SHEET NO.
639	(17.16)RS-5:1SR5-8	PEORIA	11	11
CONTRACT NO. 68G34				