

STATE OF ILLINOIS
DEPARTMENT OF TRANSPORTATION

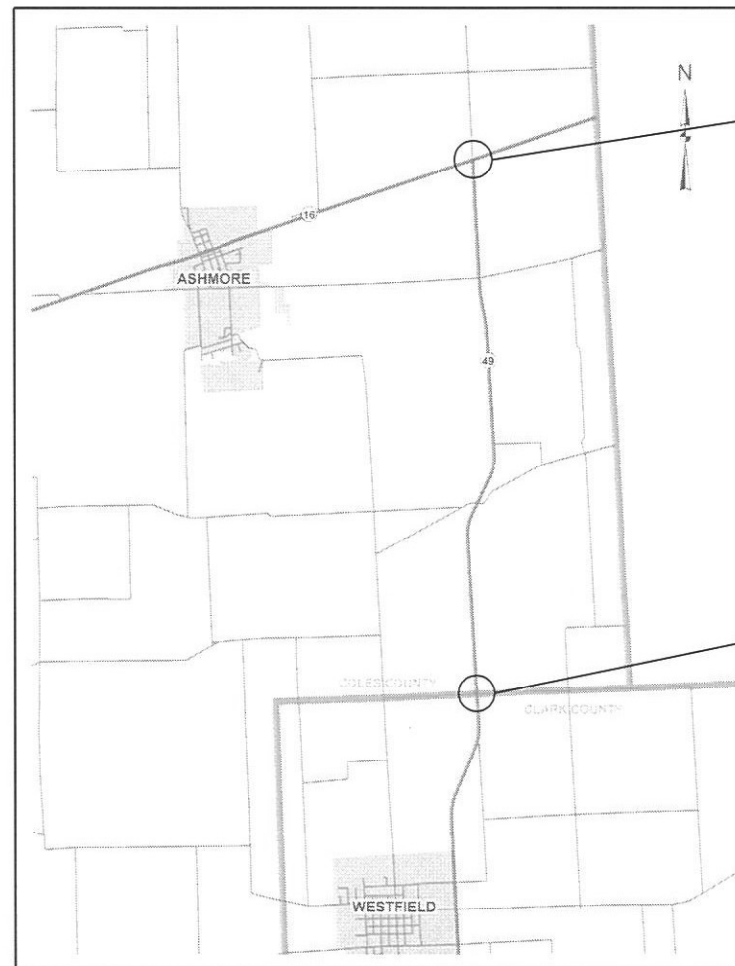
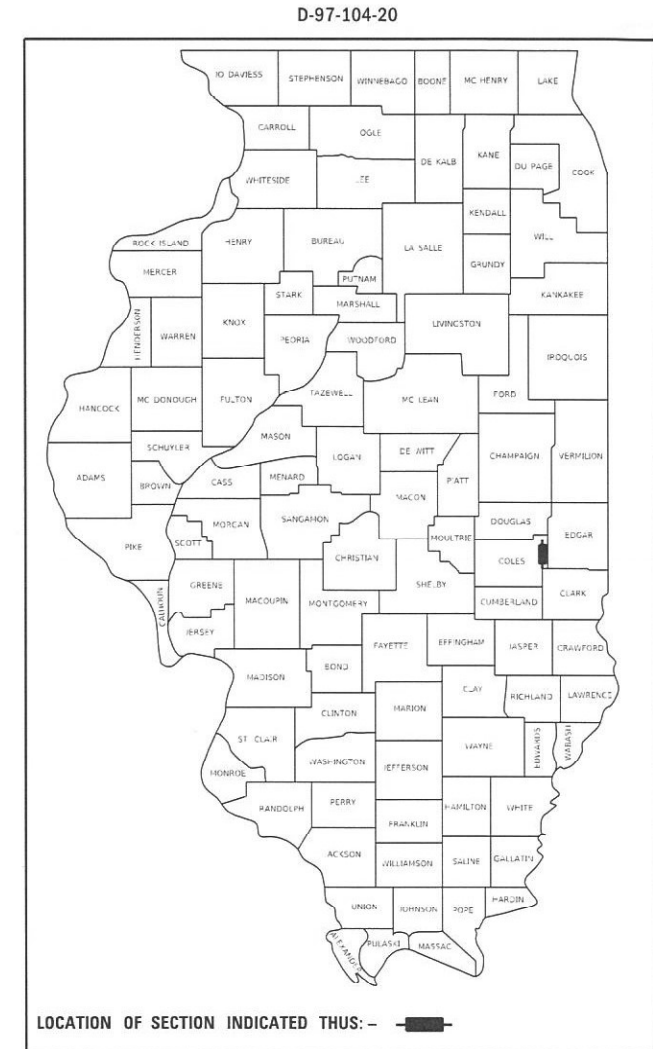
F.A.P. RTE.	SECTION	COUNTY	TOTAL SHEETS	SHEET NO.
832	(113R-5)&(114RS-4)	COLES	25	1
		ILLINOIS	CONTRACT NO. 74A21	

FOR INDEX OF SHEETS, SEE SHEET NO. 2

**PROPOSED
HIGHWAY PLANS**

FAP ROUTE 832 (IL RTE 49)
SECTION (113R-5)&(114RS-4)
PROJECT STP-WLQ1(530)
RESURFACING (SMART)
COLES COUNTY

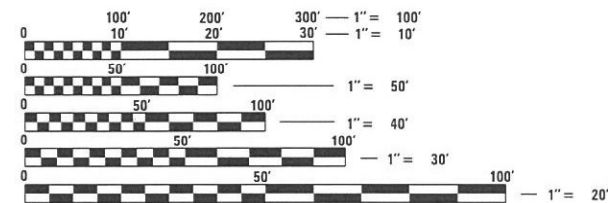
C-97-110-20



FAP ROUTE 832 (IL RTE 49)
SECTION:(113R-5)&(114RS-4)
COLES COUNTY
PROJECT ENDS:
887+87

FAP ROUTE 832 (IL RTE 49)
SECTION:(113R-5)&(114RS-4)
COLES COUNTY
PROJECT BEGINS:
655+75

ADT = 500



FULL SIZE PLANS HAVE BEEN PREPARED USING STANDARD ENGINEERING SCALES. REDUCED SIZED PLANS WILL NOT CONFORM TO STANDARD SCALES. IN MAKING MEASUREMENTS ON REDUCED PLANS, THE ABOVE SCALES MAY BE USED.

J.U.L.I.E.
JOINT UTILITY LOCATION INFORMATION FOR EXCAVATORS
1-800-892-0123
OR 811

PROJECT ENGINEER MARK DAUGHERTY
PROJECT MANAGER JASON TEASLEY

CONTRACT NO. 74A21

GROSS LENGTH = 23212 FT. = 4.40 MILE
NET LENGTH = 23212 FT. = 4.40 MILE

STATE OF ILLINOIS
DEPARTMENT OF TRANSPORTATION

SUBMITTED FEBRUARY 8 2022
Jeffrey P. Myrland
REGIONAL ENGINEER

March 25 2022
[Signature]
ENGINEER OF DESIGN AND ENVIRONMENT

March 2 2022
Stephen M. Frail
DIRECTOR OF HIGHWAYS PROJECT IMPLEMENTATION

PRINTED BY THE AUTHORITY
OF THE STATE OF ILLINOIS

GENERAL NOTES

THE WORK INCLUDED IN THIS SECTION CONSISTS OF PAVEMENT PATCHING, MILLING, PLACEMENT OF HOT-MIX ASPHALT SURFACE COURSE, AGGREGATE SHOULDERS, PAVEMENT MARKING, AND ANY OTHER WORK NECESSARY TO COMPLETE THIS SECTION.

PAVEMENT MARKING SHALL BE APPLIED IN ACCORDANCE WITH SECTION 780 OF THE STANDARD SPECIFICATIONS. SHORT TERM PAVEMENT MARKING SHALL BE APPLIED AS SPECIFIED IN SECTION 703 OF THE STANDARD SPECIFICATIONS. TEMPORARY TAPE SHALL BE USED ON THE SURFACE COURSE AND PAINT SHALL BE USED ON MILLED SURFACES AND BITUMINOUS TACK COAT.

THE TOTAL QUANTITY OF PAINT PAVEMENT MARKING - LINE 4" AND THERMOPLASTIC PAVEMENT MARKING - 4" CONSISTS OF 11,324' OF YELLOW AND 45,912' OF WHITE. THERMOPLASTIC PAVEMENT MARKING - 8" CONSISTS OF 32' OF YELLOW FOR THE DIAGONALS IN THE PAINTED MEDIAN AT IL49 & IL 16. THERMOPLASTIC PAVEMENT MARKING - 12" CONSISTS OF 67' OF WHITE FOR DIAGONALS ON THE LEFT SHOULDER AT IL49 & IL 16. THERMOPLASTIC PAVEMENT MARKING - 24" CONSISTS OF 27' OF WHITE FOR THE STOP BARS AT IL 49 & IL 16.

THE MATERIAL USED FOR AGGREGATE WEDGE SHOULDERS, TYPE B SHALL BE CRUSHED STONE OR CRUSHED CONCRETE. THE MATERIAL USED FOR AGGREGATE SURFACE COURSE, TYPE B SHALL BE CRUSHED STONE OR CRUSHED CONCRETE. RAP SHALL NOT BE USED FOR EITHER AGGREGATE WEDGE SHOULDERS, TYPE B OR FOR AGGREGATE SURFACE COURSE.

THE FOLLOWING MIXTURE REQUIREMENTS ARE APPLICABLE FOR THIS PROJECT:

MIXTURE USE:	PAVEMENT PATCHING
APPLICATION:	HOT-MIX ASPHALT BINDER COURSE, IL-19.0, N70
PG GRADE:	PG 64-22
DESIGN AIR VOIDS:	4.0%@N = 70
MIXTURE COMPOSITION:	IL-19.0
FRICTION AGGREGATE:	N/A
QUALITY MNGMT PROGRAM:	QC/QA

MIXTURE USE:	SURFACE COURSE (1 1/2")
APPLICATION:	HOT MIX ASPHALT SURFACE COURSE, MIX C, N70
PG GRADE:	PG 64-22
DESIGN AIR VOIDS:	4.0%@N = 70
MIXTURE COMPOSITION:	IL-9.5
FRICTION AGGREGATE:	MIXTURE C
QUALITY MNGMT PROGRAM:	QCP

MIXTURE USE:	INCIDENTAL HMA
APPLICATION:	HOT MIX ASPHALT SURFACE COURSE, MIX C, N70
PG GRADE:	PG 64-22
DESIGN AIR VOIDS:	4.0%@N = 70
MIXTURE COMPOSITION:	IL-9.5
FRICTION AGGREGATE:	MIXTURE C

THE HOT-MIX ASPHALT SURFACE COURSE.

THE FOLLOWING RATES OF APPLICATION HAVE BEEN USED IN CALCULATING PLAN QUANTITIES:

HOT MIX ASPHALT	112 LBS/SQ YD/IN
BITUMINOUS MATERIALS TACK COAT	0.05 LBS/SQ FT
GRANULAR MATERIAL	2.05 TONS/CU YD

INDEX OF SHEETS

SHEET NO.	ITEM
1	COVER SHEET
2	INDEX OF SHEETS & GENERAL NOTES
3-4	SUMMARY OF QUANTITIES
5-8	TYPICAL SECTIONS
9	SCHEDULE OF QUANTITIES
10-17	PLAN SHEETS
18	ENTRANCE SCHEDULE AND DETAILS
19	TYPICAL RUMBLE STRIP APPLICATION
20	SURVEY MARKER VAULT
21	SURVEY MARKERS AND MONUMENT TIES
22-25	PAVEMENT MARKING AND RAISED REFLECTIVE PAVEMENT MARKERS

THE FOLLOWING STANDARDS ARE A PART OF THESE PLANS AND ARE INCLUDED AFTER SHEET NO. 21 :

STD. NO.	DESCRIPTION
000001-08	STANDARD SYMBOLS, ABBREVIATIONS AND PATTERNS
406201-01	MAILBOX TURNOUT
442201-03	CLASS C AND D PATCHES
701001-02	OFF-RD OPERATIONS, 2L, 2W, MORE THAN 15' AWAY
701006-05	OFF-RD OPERATIONS, 2L, 2W, 15' TO 24" FROM PAVEMENT EDGE
701011-04	OFF-RD MOVING OPERATIONS, 2L,2W, DAY ONLY
701201-05	LANE CLOSURE, 2L, 2W, DAY ONLY
701306-04	LANE CLOSURE, 2L, 2W, SLOW MOVING OPERATIONS DAY ONLY, FOR SPEEDS ≥ 45 M
701311-03	LANE CLOSURE 2L, 2W, MOVING OPERATIONS - DAY ONLY
701901-08	TRAFFIC CONTROL DEVICES
001006	DECIMAL OF AN INCH AND OF A FOOT
667101-02	PERMANENT SURVEY MARKERS
668001-01	U.S. GEOLOGICAL SURVEY NATIONAL GEODETIC SURVEY BENCHMARKS, RESETTING METHOD
780001-05	TYPICAL PAVEMENT MARKINGS
781001-04	TYPICAL APPLICATIONS RAISED REFLECTIVE PAVEMENT MARKERS

MODEL: Default
 FILE NAME: p:\w\l\dot\w\berkeley.com\FWIDDOT\Documents\DOT_Offices\District_7\Projects\74A21\CAD\Drawings\Drawings\74A21-Sub\genote.dgn

REV. - MS

	USER NAME = steffennk	DESIGNED -	REVISED -	STATE OF ILLINOIS DEPARTMENT OF TRANSPORTATION	INDEX OF SHEETS GENERAL NOTES	F.A.P. RTE. 832	SECTION (113R-5)&(114RS-4)	COUNTY COLES	TOTAL SHEETS 25	SHEET NO. 2
	PLOT SCALE = 100.0000' / in.	CHECKED -	REVISED +			CONTRACT NO. 74A21			ILLINOIS FED. AID PROJECT	
	PLOT DATE = 2/17/2022	DATE -	REVISED +		SCALE:	SHEET 1	OF 1	SHEETS	STA.	TO STA.

80% FED
20% STATE

80% FED
20% STATE

SUMMARY OF QUANTITIES			TOTAL QUANTITIES	CONSTRUCTION TYPE CODE		
CODE NO	ITEM	UNIT		0005		
40200800	AGGREGATE SURFACE COURSE, TYPE B	TON	9	9		
40600290	BITUMINOUS MATERIALS (TACK COAT)	POUND	27927	27927		
40600370	LONGITUDINAL JOINT SEALANT	FOOT	23079	23079		
40600982	HOT-MIX ASPHALT SURFACE REMOVAL - BUTT JOINT	SO YD	623	623		
40600990	TEMPORARY RAMP	SO YD	118	118		
40604052	HOT-MIX ASPHALT SURFACE COURSE, IL-9.5, MIX "C", N70	TON	5503	5503		
40800050	INCIDENTAL HOT-MIX ASPHALT SURFACING	TON	85	85		
44000155	HOT-MIX ASPHALT SURFACE REMOVAL, 1 1/2"	SO YD	64874	64874		
44201827	CLASS D PATCHES, TYPE II, 15 INCH	SO YD	380	380		
44201831	CLASS D PATCHES, TYPE III, 15 INCH	SO YD	60	60		
44201833	CLASS D PATCHES, TYPE IV, 15 INCH	SO YD	275	275		
48102100	AGGREGATE WEDGE SHOULDER, TYPE B	TON	1690	1690		

SUMMARY OF QUANTITIES			TOTAL QUANTITIES	CONSTRUCTION TYPE CODE		
CODE NO	ITEM	UNIT		0005		
66700205	PERMANENT SURVEY MARKERS, TYPE I	EACH	2	2		
67000500	ENGINEER'S FIELD OFFICE, TYPE B	CAL MO	3	3		
67100100	MOBILIZATION	L SUM	1	1		
70100450	TRAFFIC CONTROL AND PROTECTION, STANDARD 701201	L SUM	1	1		
70100460	TRAFFIC CONTROL AND PROTECTION, STANDARD 701306	L SUM	1	1		
70107025	CHANGEABLE MESSAGE SIGN	CAL DA	28	28		
70300100	SHORT TERM PAVEMENT MARKING	FOOT	6957	6957		
70300150	SHORT TERM PAVEMENT MARKING REMOVAL	SO FT	773	773		
70300221	TEMPORARY PAVEMENT MARKING - LINE 4"- PAINT	FOOT	57236	57236		
70300251	TEMPORARY PAVEMENT MARKING - LINE 8"- PAINT	FOOT	32	32		
70300261	TEMPORARY PAVEMENT MARKING - LINE 12"- PAINT	FOOT	67	67		
70300281	TEMPORARY PAVEMENT MARKING - LINE 24"- PAINT	FOOT	27	27		
* 78000200	THERMOPLASTIC PAVEMENT MARKING - LINE 4"	FOOT	57236	57236		

* SPECIALTY ITEM

REV. - MS

MODEL: Default
FILE: M:\MS\p\bludat-cw-bentley.com\FWIDOT\Documents\DOT Offices\District 7\Projects\74A21\CADD\Drawings\CA\Sheets\74A21-sh-500.dgn

USER NAME = steffenmk	DESIGNED -	REVISED -
PLOT SCALE = 100.0000' / in.	DRAWN -	REVISIONS -
PLOT DATE = 2/8/2022	CHECKED -	REVISIONS -
	DATE -	REVISIONS -

STATE OF ILLINOIS
DEPARTMENT OF TRANSPORTATION

SUMMARY OF QUANTITIES

SCALE: SHEET 1 OF 2 SHEETS STA. TO STA.

F.A.P. RTE.	SECTION	COUNTY	TOTAL SHEETS	SHEET NO.
832	(113R-5)&(114RS-4)	COLES	25	3
CONTRACT NO. 74A21				
ILLINOIS FED. AID PROJECT				

80% FED
20% STATE

SUMMARY OF QUANTITIES			TOTAL QUANTITIES	CONSTRUCTION TYPE CODE		
CODE NO	ITEM	UNIT		0005		
* 78000500	THERMOPLASTIC PAVEMENT MARKING - LINE 8"	FOOT	32	32		
* 78000600	THERMOPLASTIC PAVEMENT MARKING - LINE 12"	FOOT	67	67		
* 78000650	THERMOPLASTIC PAVEMENT MARKING - LINE 24"	FOOT	27	27		
* 78011025	GROOVING FOR RECESSED PAVEMENT MARKING 5"	FOOT	57236	57236		
* 78011045	GROOVING FOR RECESSED PAVEMENT MARKING 9"	FOOT	32	32		
* 78011065	GROOVING FOR RECESSED PAVEMENT MARKING 13"	FOOT	67	67		
* 78011125	GROOVING FOR RECESSED PAVEMENT MARKING 25"	FOOT	27	27		
* 78100100	RAISED REFLECTIVE PAVEMENT MARKER	EACH	297	297		
78300200	RAISED REFLECTIVE PAVEMENT MARKER REMOVAL	EACH	297	297		
Z0049799	PROTECTING OR RESETTING SURVEY MARKERS	EACH	2	2		
Z0055600	RUMBLE STRIP	SQ YD	92	92		
Z0070202	SURVEY MARKER VAULT	EACH	2	2		

SUMMARY OF QUANTITIES			TOTAL QUANTITIES	CONSTRUCTION TYPE CODE		
CODE NO	ITEM	UNIT				

* SPECIALTY ITEM

MODEL: Default
 FILE NAME: p:\iludat-paw-beadfab.com\FW\DOT\Documents\DOT Office\Sheet_7\Project\74A21\CAD\DATA\CAD\Sheet\DOT-74A21-1-S-500.dgn

USER NAME = steffenmk	DESIGNED -	REVISED -
PLOT SCALE = 100,0000 ' / in.	CHECKED -	REVISED -
PLOT DATE = 2/8/2022	DATE -	REVISED -

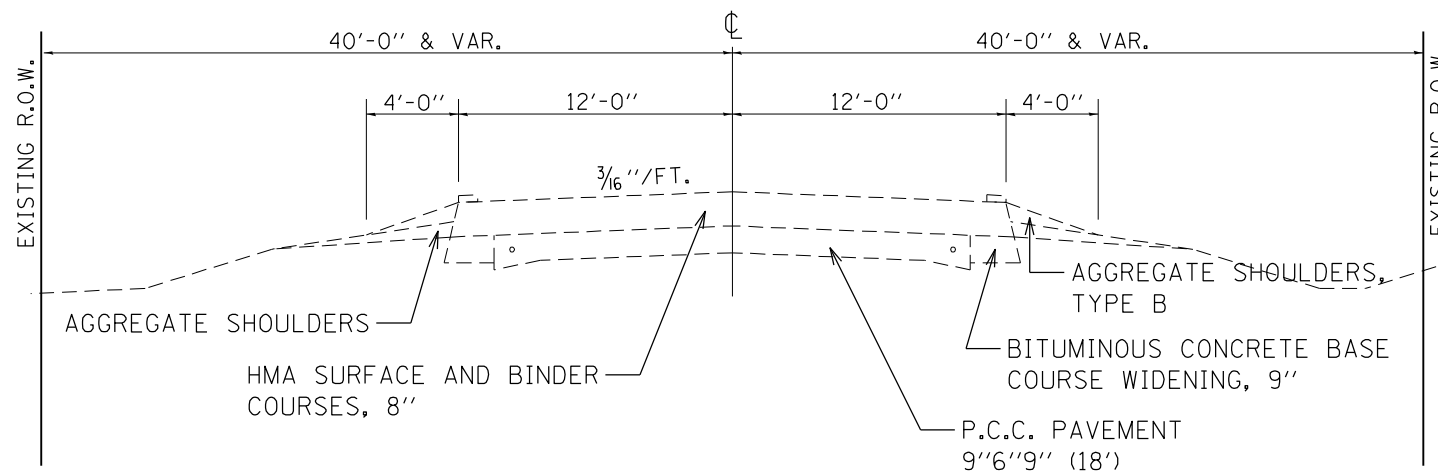
STATE OF ILLINOIS
DEPARTMENT OF TRANSPORTATION

SUMMARY OF QUANTITIES			
SCALE:	SHEET 2	OF 2 SHEETS	STA. TO STA.

F.A.P. RTE.	SECTION	COUNTY	TOTAL SHEETS	SHEET NO.
832	(113R-5)&(114R5-4)	COLES	25	4
CONTRACT NO. 74A21				
ILLINOIS FED. AID PROJECT				

EXISTING TYPICAL CROSS SECTION

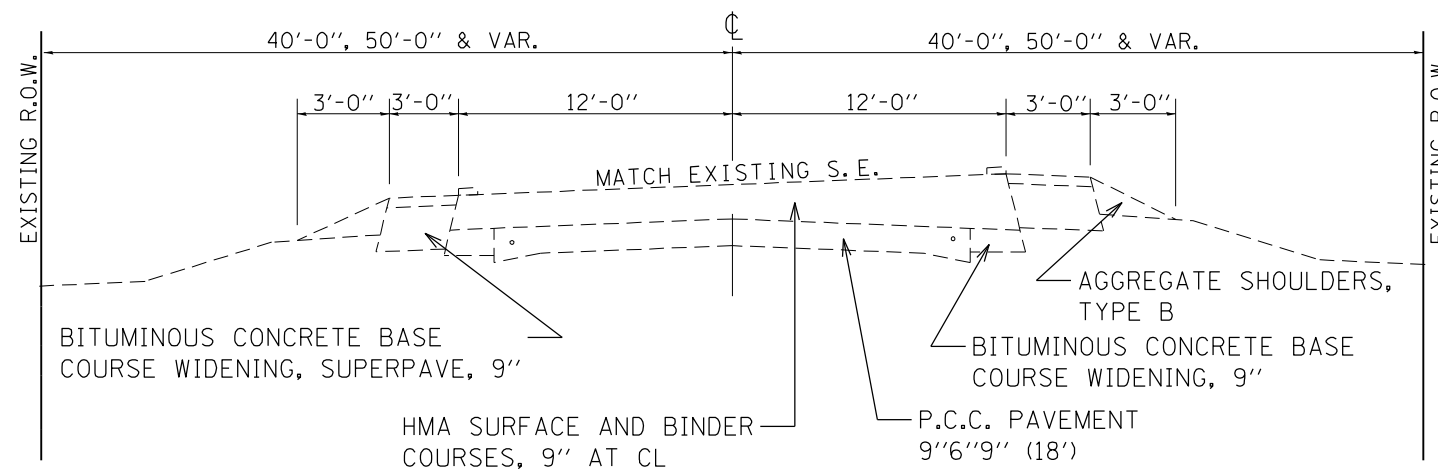
<u>STATION</u>	<u>TO</u>	<u>STATION</u>
655+75		823+47
834+49		845+28
848+35		885+69



BITUMINOUS SHOULDER		
STATION	STATION	WIDTH
RT. 722+38	TO RT. 733+10	3'
LT. 749+90	TO LT. 760+65	3'
LT. 811+09	TO LT. 823+47	3'

EXISTING TYPICAL CROSS SECTION

<u>STATION</u>	<u>TO</u>	<u>STATION</u>
823+47		834+49



BITUMINOUS SHOULDER		
STATION	STATION	WIDTH
RT. 823+47	TO RT. 834+49	3'

MODEL: Default
 FILE NAME: p:\ultra-cw-bead\paw.com\PIV\DOT\Documents\DOT Office\Director_7\Project\74A21\CADD\DATA\CAD\Sheet\DOT-74A21-1-1-1-1-1-1.dgn

USER NAME = stefnkmk	DESIGNED -	REVISED -	
	DRAWN -	REVISED -	
PLOT SCALE = 100,0000' / in.	CHECKED -	REVISED -	
PLOT DATE = 2/8/2022	DATE -	REVISED -	

**STATE OF ILLINOIS
DEPARTMENT OF TRANSPORTATION**

**TYPICAL CROSS SECTIONS
(EXISTING)**

SCALE: SHEET 1 OF 4 SHEETS

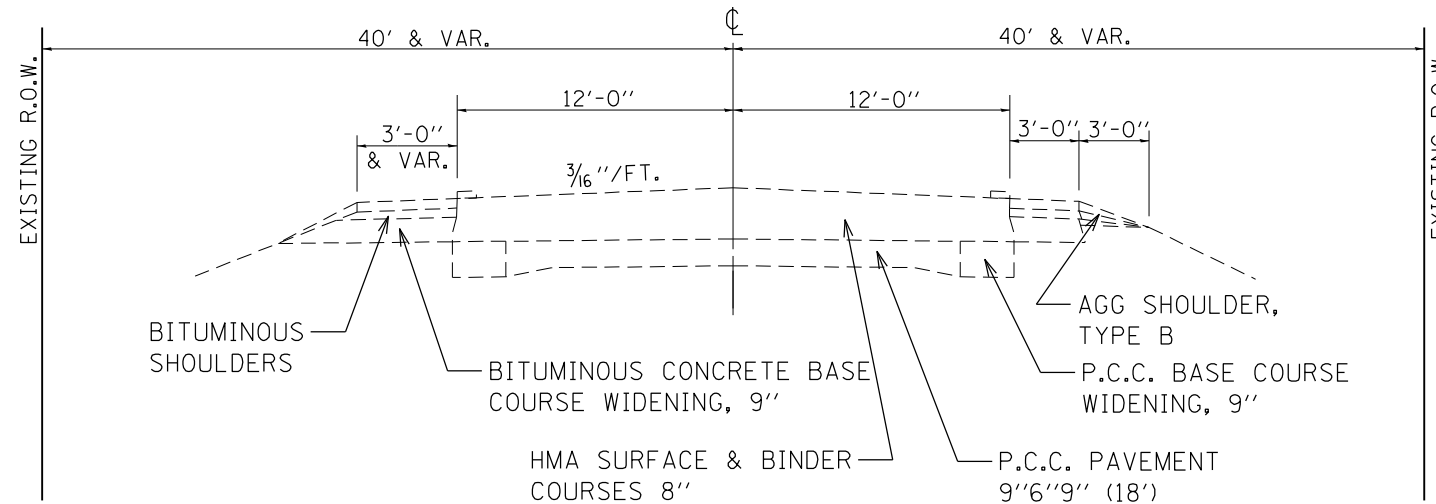
F.A.P. RTE.	SECTION	COUNTY	TOTAL SHEETS	SHEET NO.
832	(113R-5)&(114RS-4)	COLES	25	5
CONTRACT NO. 74A21				
ILLINOIS FED. AID PROJECT				

EXISTING TYPICAL CROSS SECTION

STATION TO STATION

845+28 846+81
847+85 848+35

PAVING OMISSION
846+81 847+85



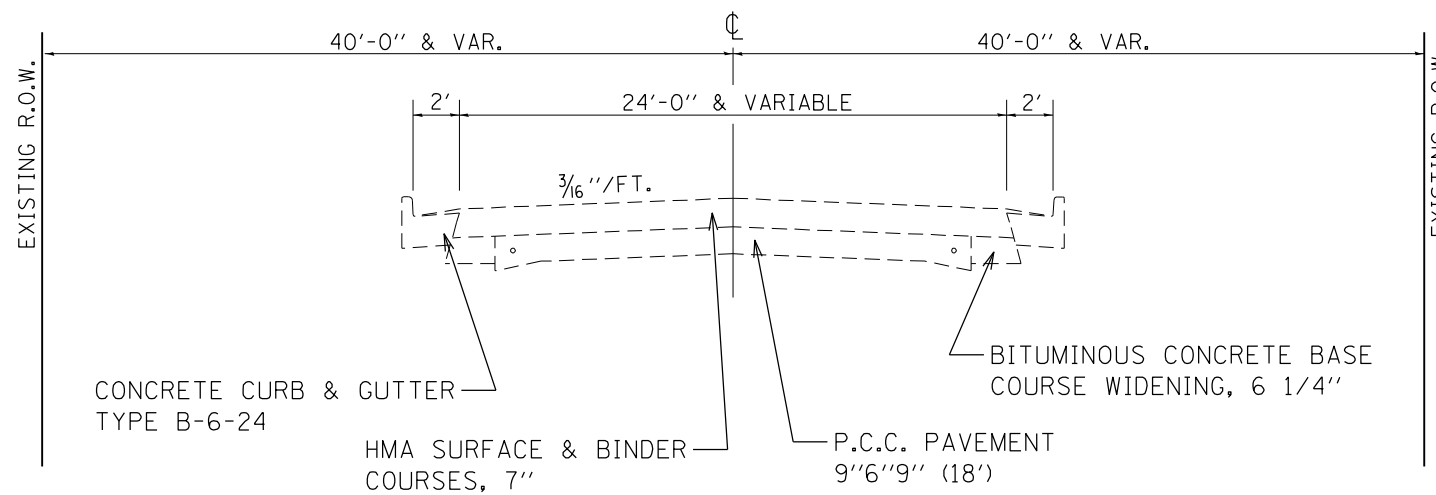
BITUMINOUS SHOULDER		WIDTH
STATION	STATION	
RT/LT 845+28 TO RT/LT 846+81		3'
RT/LT 847+85 TO RT/LT 848+35		3'

EXISTING TYPICAL CROSS SECTION

STATION TO STATION

885+69 887+87

INTERSECTION OF IL. RTE. 49 AND IL. RTE. 16



**STATE OF ILLINOIS
DEPARTMENT OF TRANSPORTATION**

**TYPICAL CROSS SECTIONS
(EXISTING)**

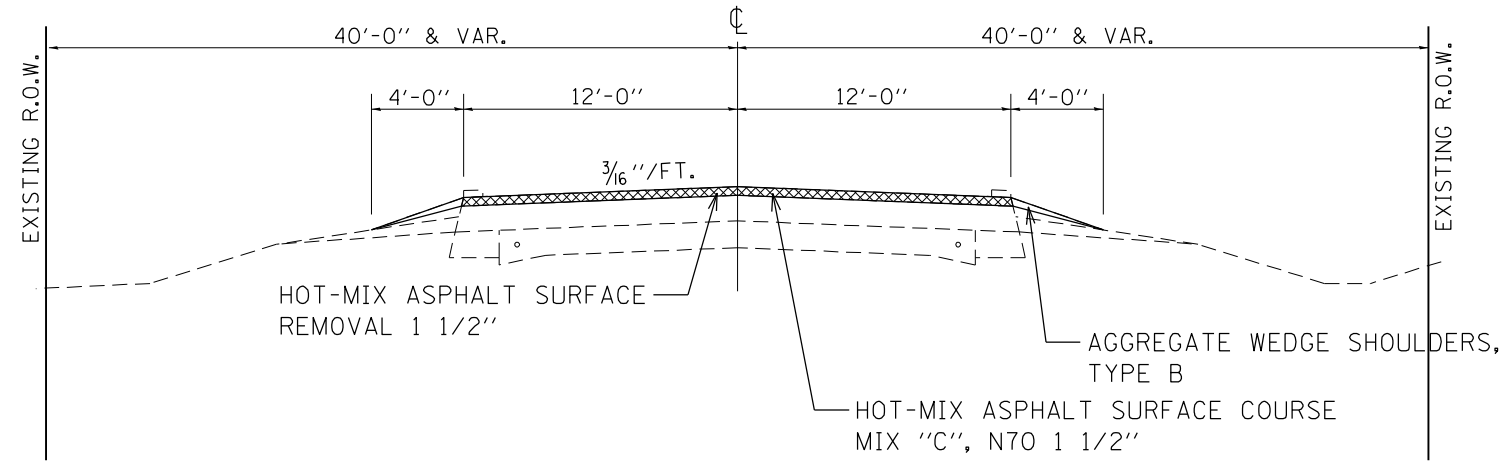
F.A.P. RTE.	SECTION	COUNTY	TOTAL SHEETS	SHEET NO.
832	(113R-5)&(114RS-4)	COLES	25	6
CONTRACT NO. 74A21				
ILLINOIS FED. AID PROJECT				

SCALE: SHEET 2 OF 4 SHEETS

MODEL: Default
FILE NAME: p:\ultra\paw_bentley.com\p1\INDOT\Documents\DOT Office\Dir\drf_7\Project\74A21\CADD\DATA\CAD\Sheet\DOT-74A21-1-18-cy\tech.dgn

PROPOSED TYPICAL CROSS SECTION

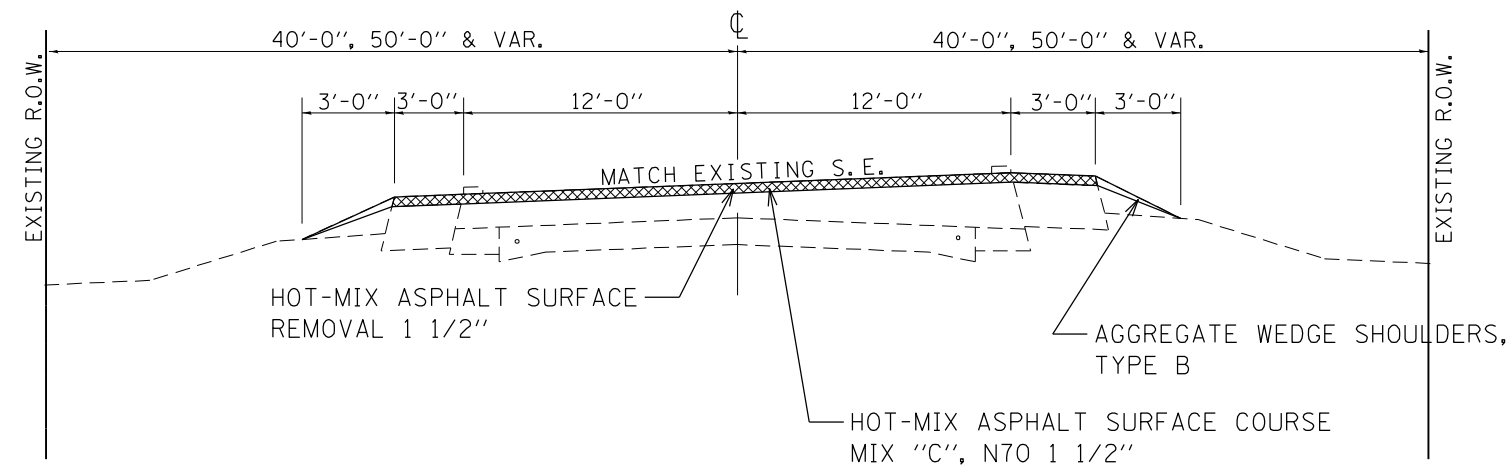
STATION	TO	STATION
655+75		823+47
834+49		845+28
848+35		885+69



BITUMINOUS SHOULDER		STATION	TO	STATION	WIDTH
RT.	722+38	TO	RT.	733+10	3'
LT.	749+90	TO	LT.	760+65	3'
LT.	811+09	TO	LT.	823+47	3'

PROPOSED TYPICAL CROSS SECTION

STATION	TO	STATION
823+47		834+49



BITUMINOUS SHOULDER		STATION	TO	STATION	WIDTH
RT.	823+47	TO	RT.	834+49	3'

MODEL: Default
 FILE NAME: p:\ultra-cw-beadwy.com\PI\DOT\Documents\DOT Office\Director_7\Project\74A21\CADD\DATA\CAD\Sheet\DOT-74A21-1-1-1-1-1-1.dgn

USER NAME = stefenmk	DESIGNED -	REVISED -
	DRAWN -	REVISED -
PLOT SCALE = 100,0000 ' / in.	CHECKED -	REVISED -
PLOT DATE = 2/8/2022	DATE -	REVISED -

STATE OF ILLINOIS
DEPARTMENT OF TRANSPORTATION

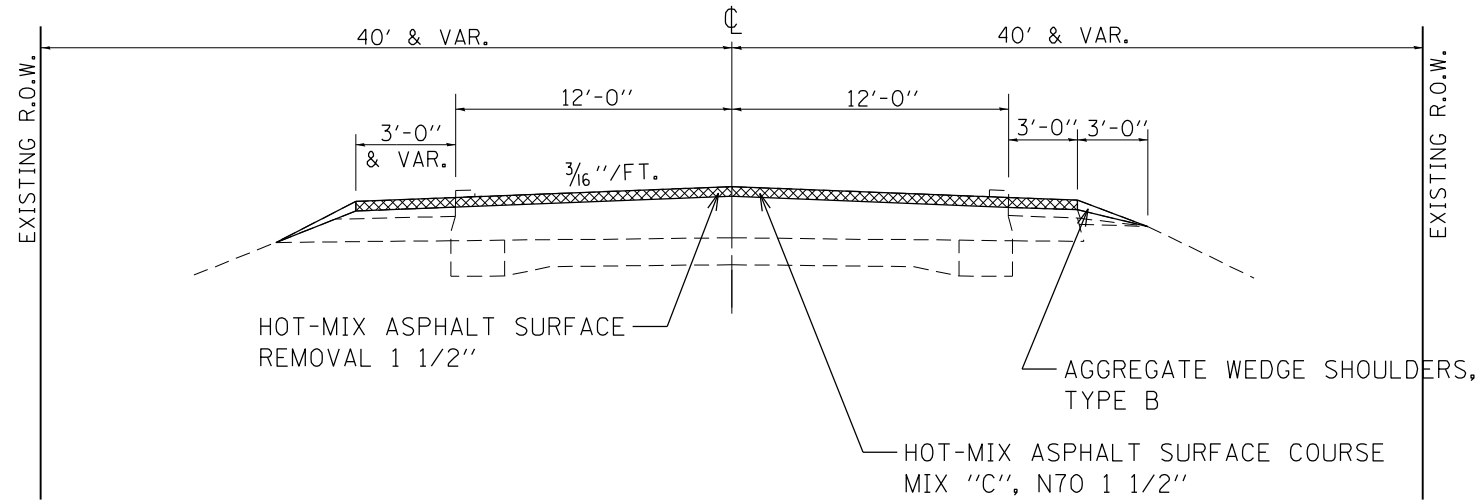
TYPICAL CROSS SECTIONS
(PROPOSED)

SCALE: SHEET 3 OF 4 SHEETS

F.A.P. RTE.	SECTION	COUNTY	TOTAL SHEETS	SHEET NO.
832	(115R-5)&(114RS-4)	COLES	25	7
CONTRACT NO. 74A21				
ILLINOIS FED. AID PROJECT				

PROPOSED TYPICAL CROSS SECTION

STATION	TO	STATION
845+28		846+81
847+85		848+35
PAVING OMISSION		
846+81	847+85	

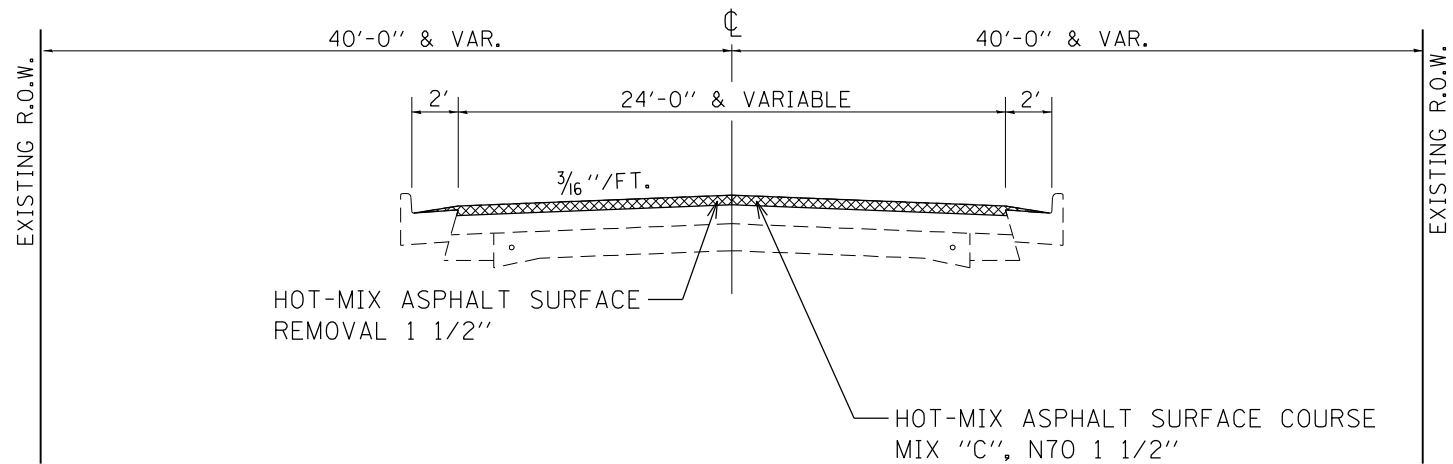


BITUMINOUS SHOULDER		
STATION	STATION	WIDTH
RT/LT 845+28 TO RT/LT 846+81		3' & VAR.
RT/LT 847+85 TO RT/LT 848+35		3' & VAR.

PROPOSED TYPICAL CROSS SECTION

STATION	TO	STATION
885+69		887+87

INTERSECTION OF IL. RTE. 49 AND IL. RTE. 16



**STATE OF ILLINOIS
DEPARTMENT OF TRANSPORTATION**

**TYPICAL CROSS SECTIONS
(PROPOSED)**

F.A.P. RTE.	SECTION	COUNTY	TOTAL SHEETS	SHEET NO.
832	(115R-5)&(114RS-4)	COLES	25	8
CONTRACT NO. 74A21				
ILLINOIS FED. AID PROJECT				

USER NAME = stefenmk	DESIGNED -	REVISED -	
	DRAWN -	REVISED -	
PLOT SCALE = 100,0000' / in.	CHECKED -	REVISED -	
PLOT DATE = 2/8/2022	DATE -	REVISED -	

SCALE: SHEET 4 OF 4 SHEETS

MODEL: Default
FILE NAME: p:\bulletect-pw-beadefy.com\FW\DOT\Documents\DOT_offices\Dir\dir_7\Project\74A21\CADD\Drawings\CAD\Sheet\DOT-74A21-1-16-cy\tech.dgn

RESURFACING SCHEDULE

STATION TO STATION	LENGTH FOOT	AVERAGE WIDTH OF RESURFACING (PAVEMENT PLUS HMA SHOULDERS) FOOT	AREA SQ YD	HOT-MIX ASPHALT SURFACE REMOVAL - BUTT JOINT SQ YD	HOT-MIX ASPHALT SURFACE REMOVAL, 1 1/2" SQ YD	BITUMINOUS MATERIALS (TACK COAT) POUND	HOT-MIX ASPHALT SURFACE COURSE, MIX "C", N70 TON	AGGREGATE WEDGE SHOULDERS, TYPE B TON	TEMPORARY RAMP SQ YD
655+75.00 TO 656+05.00	30.00	24.0	80	80	0	36	7	2	13.3
656+05.00 TO 722+65.00	6660.00	24.0	17760	0	17760	7992	1492	493	0.0
722+65.00 TO 733+15.00	1050.00	27.0	3150	0	3150	1418	265	75	0.0
733+15.00 TO 749+85.00	1670.00	24.0	4453	0	4453	2004	374	119	0.0
749+85.00 TO 760+70.00	1085.00	27.0	3255	0	3255	1465	273	82	0.0
760+70.00 TO 811+15.00	5045.00	24.0	13453	0	13453	6054	1130	370	0.0
811+15.00 TO 823+15.00	1200.00	27.0	3600	0	3600	1620	302	86	0.0
823+15.00 TO 834+15.00	1100.00	27.0	3300	0	3300	1485	277	83	0.0
834+15.00 TO 844+95.00	1080.00	24.0	2880	0	2880	1296	242	76	0.0
844+95.00 TO 846+51.00	156.00	30.0	520	0	520	234	44	10	0.0
846+51.00 TO 846+81.00	30.00	30.0	100	100	0	45	8	2	16.7
846+81.00 TO 847+85.00	104.00	BRIDGE - PAVING OMISSION							0.0
847+85.00 TO 848+15.00	30.00	30.0	100	100	0	45	8	2	16.7
848+15.00 TO 849+60.00	145.00	30.0	483	0	483	218	41	11	0.0
849+60.00 TO 881+46.00	3186.00	24.0	8496	0	8496	3823	714	231	0.0
881+46.00 TO 887+28.00	582.00	VAR.	3524	0	3524	176	296	44	0.0
887+28.00 TO 887+58.00	30.00	VAR.	343	343	0	17	30	2	71.1
TOTALS	23183		65497	623	64874	27927	5503	1690	118

PAVEMENT MARKING SCHEDULE

STATION TO STATION	LENGTH FOOT	70300221 TEMPORARY PAVEMENT MARKING-LINE 4" PAINT FOOT	70300251 TEMPORARY PAVEMENT MARKING-LINE 8" PAINT FOOT	70300261 TEMPORARY PAVEMENT MARKING-LINE 12" PAINT FOOT	70300281 TEMPORARY PAVEMENT MARKING-LINE 24" PAINT FOOT	70300100 SHORT-TERM PAVEMENT MARKING FOOT	70300150 SHORT TERM PAVEMENT MARKING REMOVAL SQ FT	78100100 RAISED REFLECTIVE PAVEMENT MARKER EACH	78300200 RAISED REFLECTIVE PAVEMENT MARKER REMOVAL EACH	78000200 THERMOPLASTIC PAVEMENT MARKING - LINE 4" FOOT	78000500 THERMOPLASTIC PAVEMENT MARKING - LINE 8" FOOT	78000600 THERMOPLASTIC PAVEMENT MARKING - LINE 12" FOOT	78000650 THERMOPLASTIC PAVEMENT MARKING - LINE 24" FOOT
655+75.00 TO 715+10.00	5935.0	13234				1781	197.3	74	74	13234	0		
715+10.00 TO 724+75.00	965.0	3131				290	32.0	12	12	3131	0		
724+75.00 TO 728+00.00	325.0	1252				98	10.7	4	4	1252	0		
728+00.00 TO 739+30.00	1130.0	3547				339	38.7	15	15	3547	0		
739+30.00 TO 744+35.00	505.0	1136				152	17.3	6	6	1136	0		
744+35.00 TO 754+75.00	1040.0	3364				312	34.7	13	13	3364	0		
754+75.00 TO 755+85.00	110.0	486				33	4.0	2	2	486	0		
755+85.00 TO 764+60.00	875.0	2825				263	28.0	11	11	2825	0		
764+60.00 TO 881+54.00	11694.0	26138				3508	389.3	146	146	26138	0		
881+54.00 TO 885+25.00	371.0	1179	32	67		111	12.0	7	7	1179	32	67	0
885+25.00 TO 887+58.00	233.0	944				70	8.0	7	7	944			27
TOTALS	23183	57236	32	67	27	6957	773.3	297	297	57236	32	67	27

SURVEY MARKER SCHEDULE

POINT	STATION	OFFSET	NORTHING	EASTING	DESCRIPTION	PROPOSED WORK	PERMANENT SURVEY MARKERS, TYPE I	PROTECTING OR RESETTING SURVEY MARKERS	SURVEY MARKER VAULT
						PROTECT OR RESET	EACH	EACH	EACH
2000	805+13	4.0' Lt.	1039675	1083830	PSM IN ALUM. VAULT BURIED +/- 15"	Install new vault - protect PSM		1	1
2001	836+82	0	1042825	1083531	ALUM VAULT COULDN'T OPEN PREVIOUS IRON PIN	Remove vault - Install Type I IDOT Disk flush	1		
2002	845+45	0	1043689	1083504	MAG NAIL FOUND	Reset Mag Nail	1		
2003	872+22	0	1046363	1083421	PSM IN ALUM. VAULT BURIED +/- 6"	Install new vault - protect PSM		1	1
TOTALS							2	2	2

STATE OF ILLINOIS
DEPARTMENT OF TRANSPORTATION

SCHEDULE OF QUANTITIES

USER NAME = stefenmk	DESIGNED -	REVISED -	SCHEDULE OF QUANTITIES	F.A.P. RTE.	SECTION	COUNTY	TOTAL SHEETS	SHEET NO.
PLOT SCALE = 100,0000' / in.	DRAWN -	REVISED -		832	(113R-5)&(114R5-5)	COLES	25	9
PLOT DATE = 2/17/2022	CHECKED -	REVISED -		CONTRACT NO. 74A21				
DATE -	REVISED -			ILLINOIS FED. AID PROJECT				

SCALE: SHEET 1 OF 1 SHEETS STA. TO STA.



PROJECT BEGINS
STA 655 + 75

POT Sta. 650+00.00

650+00 | 651 | 652 | 653 | 654 | 655+00 | 656 | 657 | 658 | 659 | 660+00 | 661 | 662 | 663 | 664 | 665+00

LT 656+05 (PRA)

RT 656+05 (PRA)



LT 667 + 43 (FE)

LT 669 + 70 (PE)

RT 669 + 70 (MBT)

665+00 | 666 | 667 | 668 | 669 | 670+00 | 671 | 672 | 673 | 674 | 675+00 | 676 | 677 | 678 | 679 | 680+00

MODEL: Default
FILE NAME: p:\project-74a21\cadd\data\CAD\sheet\DOT\74a21\1st-draw.dgn

USER NAME = stefenmk	DESIGNED -	REVISED -
	DRAWN -	REVISED -
PLOT SCALE = 100,0000 ' / in.	CHECKED -	REVISED -
PLOT DATE = 2/8/2022	DATE -	REVISED -

STATE OF ILLINOIS
DEPARTMENT OF TRANSPORTATION

PLAN SHEET

SCALE: SHEET 1 OF 8 SHEETS STA. 650+00 TO STA. 680+00

F.A.P. RTE.	SECTION	COUNTY	TOTAL SHEETS	SHEET NO.
832	(113R-5)&(114RS-4)	COLES	25	10
CONTRACT NO. 74A21			ILLINOIS FED. AID PROJECT	



680+00 | 681 | 682 | 683 | 684 | 685+00 | 686 | 687 | 688 | 689 | 690+00 | 691 | 692 | 693 | 694 | 695+00

RT 680+50 (PE)

POT Sta 690+18.44



695+00 | 696 | 697 | 698 | 699 | 700+00 | 701 | 702 | 703 | 704 | 705+00 | 706 | 707 | 708 | 709 | 710+00

LT 695+75 (FE)

LT 704+61 (FE)

RT 704+61 (FE)

MODEL: Default
FILE NAME: p:\ultra-cw-bead\paw.com\PIV\DOT\Documents\DOT\offices\Dir\dir_7\Project\74A21\CADD\DATA\CAD\Sheet\DOT-74A21-LR-Adm.dgn

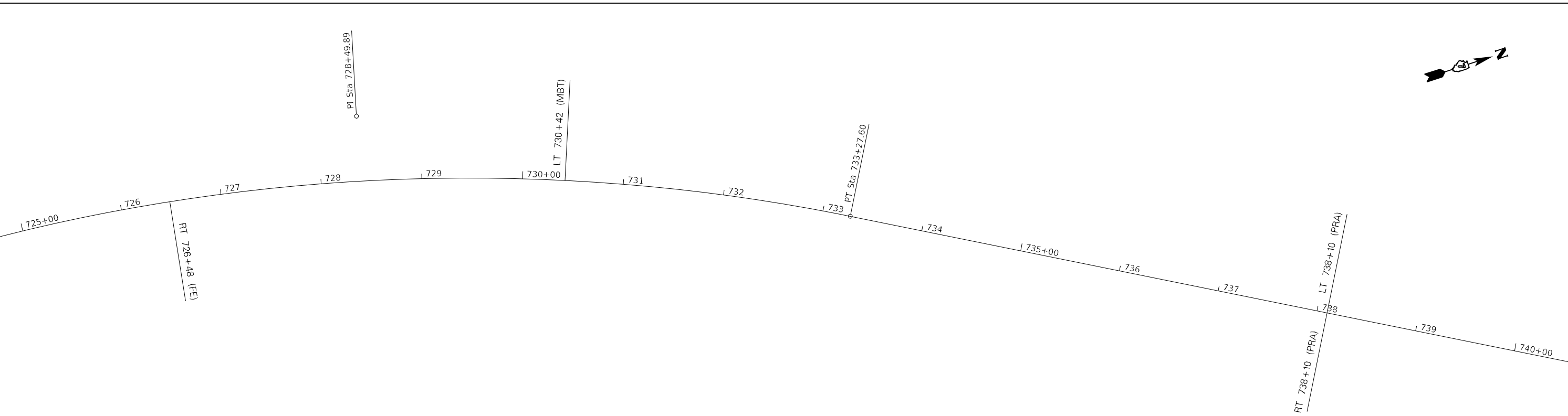
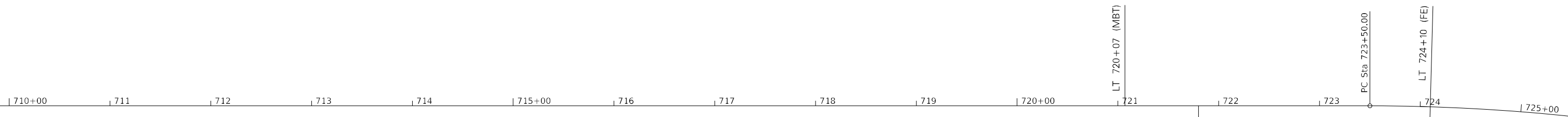
USER NAME = stefenmk	DESIGNED -	REVISED -
	DRAWN -	REVISED -
PLOT SCALE = 100,0000 ' / in.	CHECKED -	REVISED -
PLOT DATE = 2/8/2022	DATE -	REVISED -

**STATE OF ILLINOIS
DEPARTMENT OF TRANSPORTATION**

PLAN SHEET

SCALE: SHEET 2 OF 8 SHEETS STA. 680+00 TO STA. 710+00

F.A.P. RTE.	SECTION	COUNTY	TOTAL SHEETS	SHEET NO.
832	(113R-5)&(114RS-4)	COLES	25	11
CONTRACT NO. 74A21			ILLINOIS FED. AID PROJECT	



MODEL: Default
 FILE: \\mamec-pw\ultra-cw-bead\paw.com\PI\DOT\Documents\DOT\Office\Director_7\Projects\74A21\CADD\DATA\CAD\Sheet\DOT-74A21-1-1-1-1.dwg

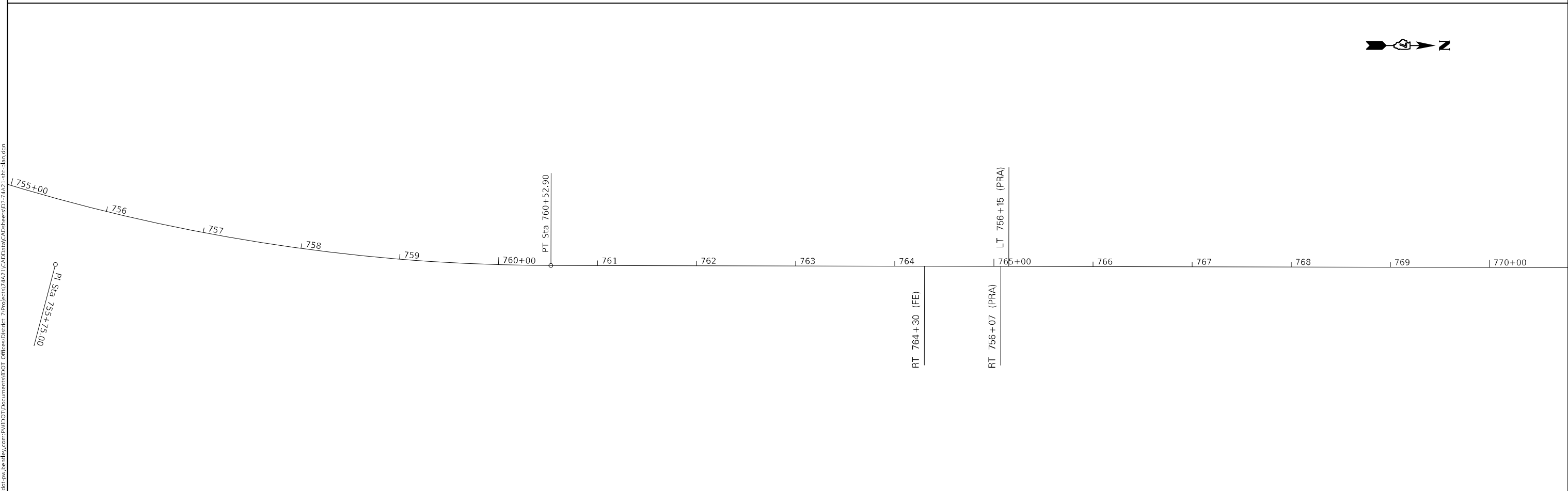
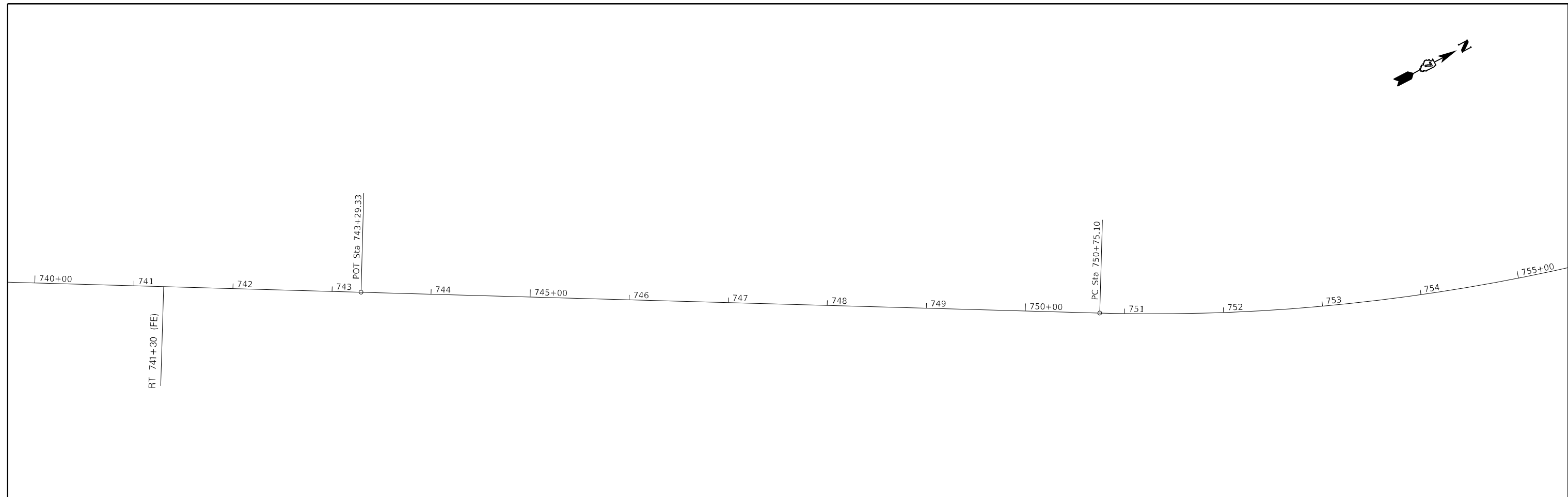
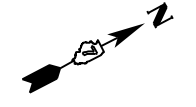
USER NAME = stefenmk	DESIGNED -	REVISED -
	DRAWN -	REVISED -
PLOT SCALE = 100,0000' / in.	CHECKED -	REVISED -
PLOT DATE = 2/8/2022	DATE -	REVISED -

**STATE OF ILLINOIS
DEPARTMENT OF TRANSPORTATION**

PLAN SHEET

SCALE: SHEET 3 OF 8 SHEETS STA. 710+00 TO STA. 740+00

F.A.P. RTE.	SECTION	COUNTY	TOTAL SHEETS	SHEET NO.
832	(113R-5)6(114RS-4)	COLES	25	12
CONTRACT NO. 74A21				
ILLINOIS FED. AID PROJECT				



MODEL: Default
 FILE NAME: p:\project-aw-beadley.com\PI\DOT\Documents\DOT Office\Dir\dir_7\Project\74A21\CADD\DATA\CAD\Sheet\DOT-74A21-1-1-1-1.dwg

USER NAME = stefenmk	DESIGNED -	REVISED -
	DRAWN -	REVISED -
PLOT SCALE = 100,0000' / in.	CHECKED -	REVISED -
PLOT DATE = 2/8/2022	DATE -	REVISED -

STATE OF ILLINOIS
DEPARTMENT OF TRANSPORTATION

PLAN SHEET

SCALE: SHEET 4 OF 8 SHEETS STA. 740+00 TO STA. 770+00

F.A.P. RTE.	SECTION	COUNTY	TOTAL SHEETS	SHEET NO.
832	(113R-5)&(114RS-4)	COLES	25	13
CONTRACT NO. 74A21				
ILLINOIS FED. AID PROJECT				



| 770+00 | 771 | 772 | 773 | 774 | 775+00 | 776 | 777 | 778 | 779 | 780+00 | 781 | 782 | 783 | 784 | 785+00



| 785+00 | 786 | 787 | 788 | 789 | POT Sta 789+45.79 | 790+00 | 791 | LT 791+47 (FE) | 792 | 793 | 794 | 795+00 | 796 | 797 | 798 | 799 | 800+00

RT 791+47 (FE)

MODEL: Default
FILE: \\MAILSrv\public\paw.bentley.com\PIV\DOT\Documents\DOT\Office\Director_7\Projects\74A21\CADD\DATA\CAD\Sheets\DOT-74A21-1-1P-1.dwg, dgn

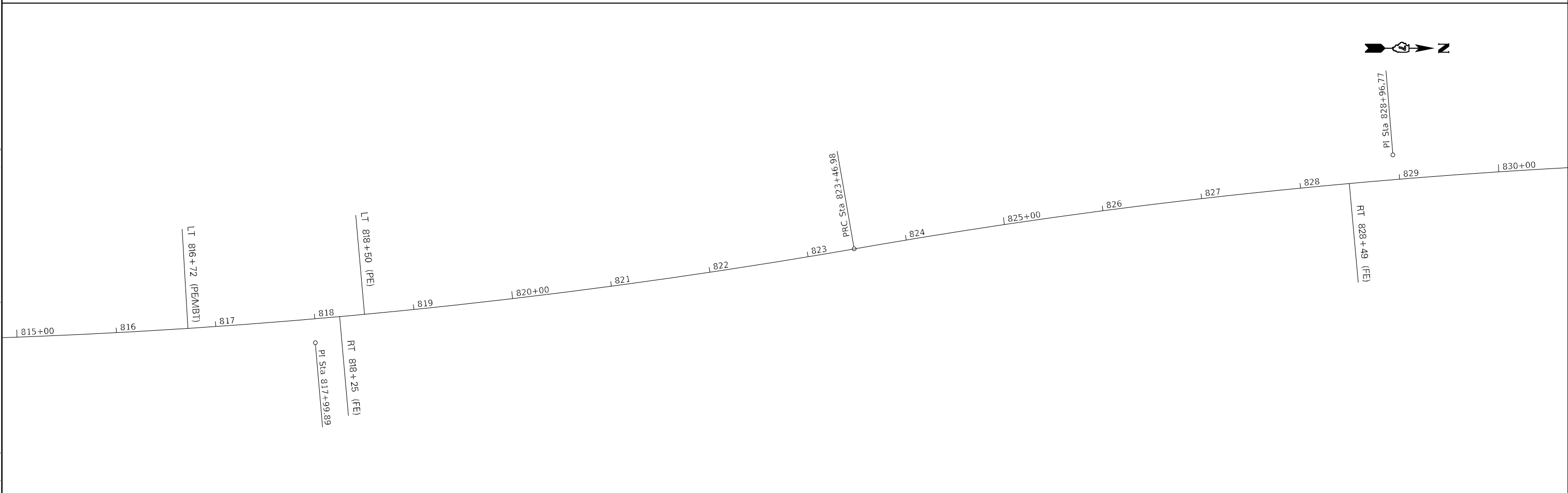
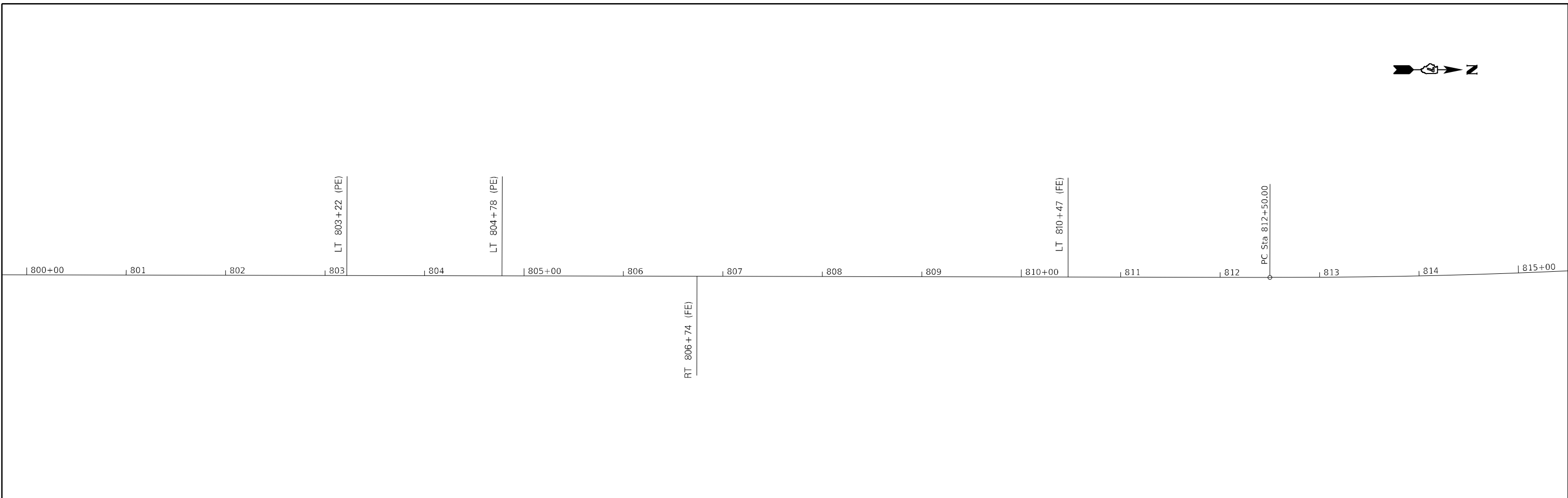
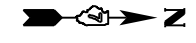
USER NAME = steffenmk	DESIGNED -	REVISED -
	DRAWN -	REVISED -
PLOT SCALE = 100,0000 ' / in.	CHECKED -	REVISED -
PLOT DATE = 2/17/2022	DATE -	REVISED -

**STATE OF ILLINOIS
DEPARTMENT OF TRANSPORTATION**

PLAN SHEET

SCALE: SHEET 5 OF 8 SHEETS STA. 770+00 TO STA. 800+00

F.A.P. RTE.	SECTION	COUNTY	TOTAL SHEETS	SHEET NO.
832	(113R-5)&(114RS-4)	COLES	25	14
CONTRACT NO. 74A21			ILLINOIS FED. AID PROJECT	



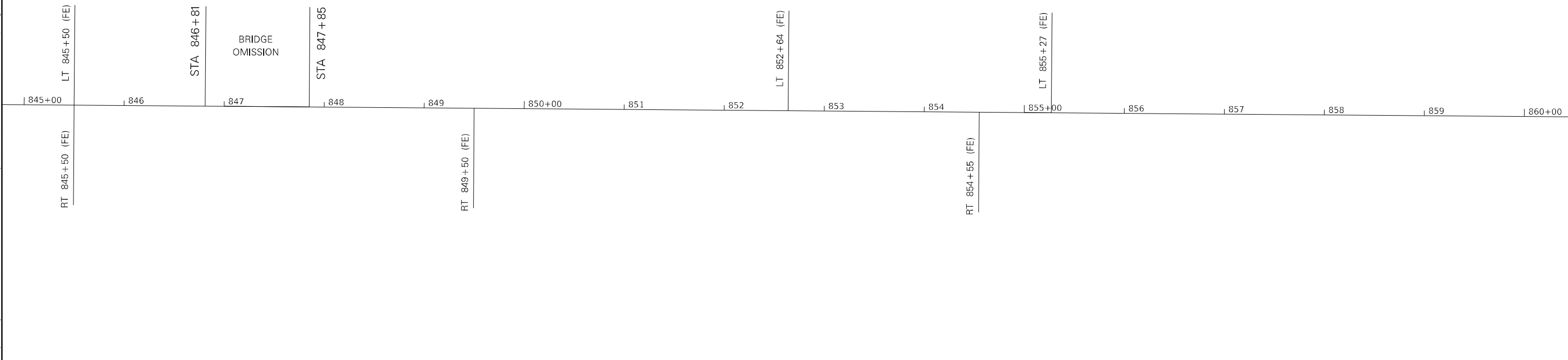
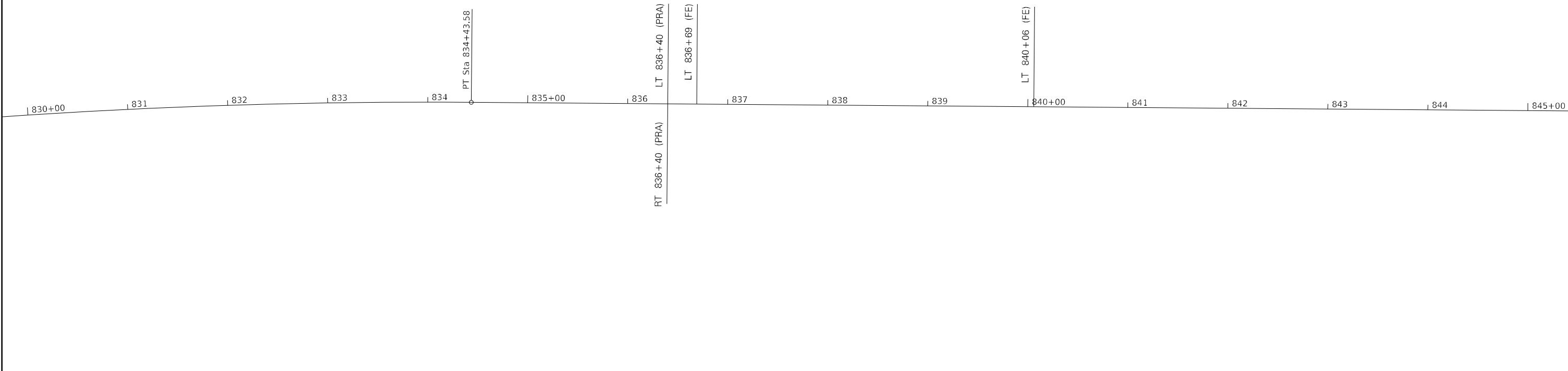
MODEL: Default
 FILE NAME: p:\ultra-cw-bead\p\p\DOT\Documents\DOT Office\Dir\dir_7\Project\74A21\CADD\DATA\CAD\Sheet\DOT-74A21-1-1-1.dwg

USER NAME = stefnrmk	DESIGNED -	REVISED -
	DRAWN -	REVISED -
PLOT SCALE = 100,0000 ' / in.	CHECKED -	REVISED -
PLOT DATE = 2/8/2022	DATE -	REVISED -

STATE OF ILLINOIS
DEPARTMENT OF TRANSPORTATION

PLAN SHEET			
SCALE:	SHEET 6	OF 8	SHEETS
	STA. 800+00	TO STA. 830+00	

F.A.P. RTE.	SECTION	COUNTY	TOTAL SHEETS	SHEET NO.
832	(113R-5)&(114RS-4)	COLES	25	15
CONTRACT NO. 74A21				
ILLINOIS FED. AID PROJECT				



MODEL: Default
 FILE NAME: p:\project-aw-bee\paw.com\PIV\DOT\Documents\DOT Office\Dir\dir_7\Project\74A21\CADD\DATA\CADD\Sheet\DOT-74A21-1-1-1-1.dgn

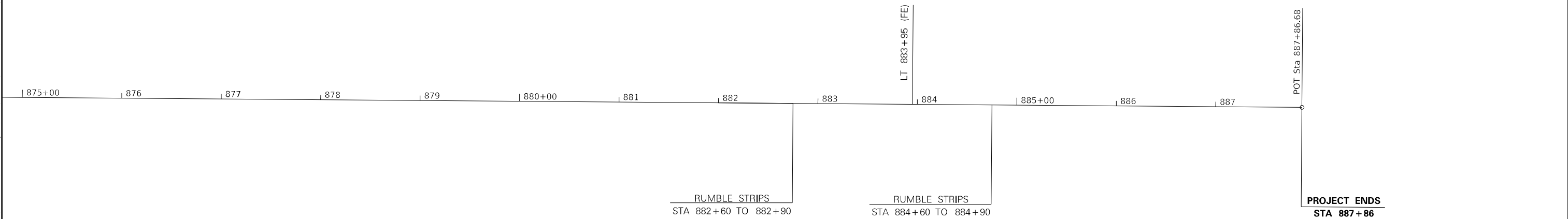
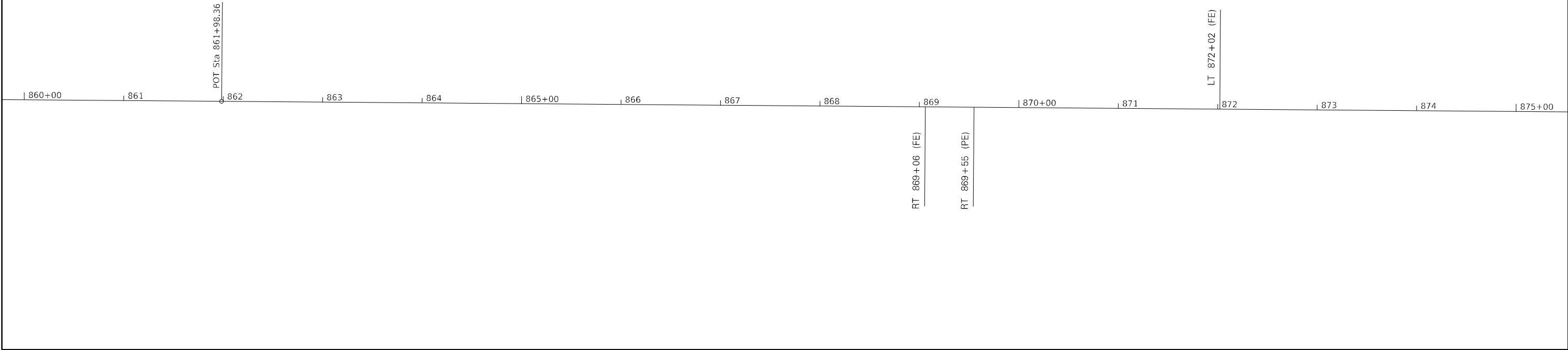
USER NAME = stefenmk	DESIGNED -	REVISED -
	DRAWN -	REVISED -
PLOT SCALE = 100,0000 ' / in.	CHECKED -	REVISED -
PLOT DATE = 2/8/2022	DATE -	REVISED -

**STATE OF ILLINOIS
 DEPARTMENT OF TRANSPORTATION**

PLAN SHEET

SCALE: SHEET 7 OF 8 SHEETS STA. 830+00 TO STA. 860+00

F.A.P. RTE.	SECTION	COUNTY	TOTAL SHEETS	SHEET NO.
832	(113R-5)&(114RS-4)	COLES	25	16
CONTRACT NO. 74A21			ILLINOIS FED. AID PROJECT	



MODEL: Default
 FILE NAME: p:\ultra-cw-bead\p\dot\Documents\DOT Office\District 7\Project\74A21\CAD\DATA\CAD\Sheet\DOT-74A21-1-1-1-1.dwg

USER NAME = stefenmk	DESIGNED -	REVISED -
	DRAWN -	REVISED -
PLOT SCALE = 100,0000 ' / in.	CHECKED -	REVISED -
PLOT DATE = 2/8/2022	DATE -	REVISED -

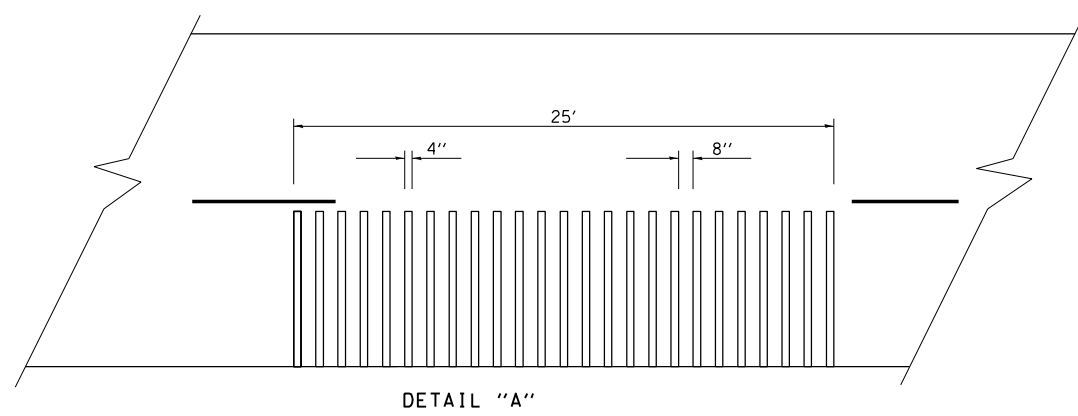
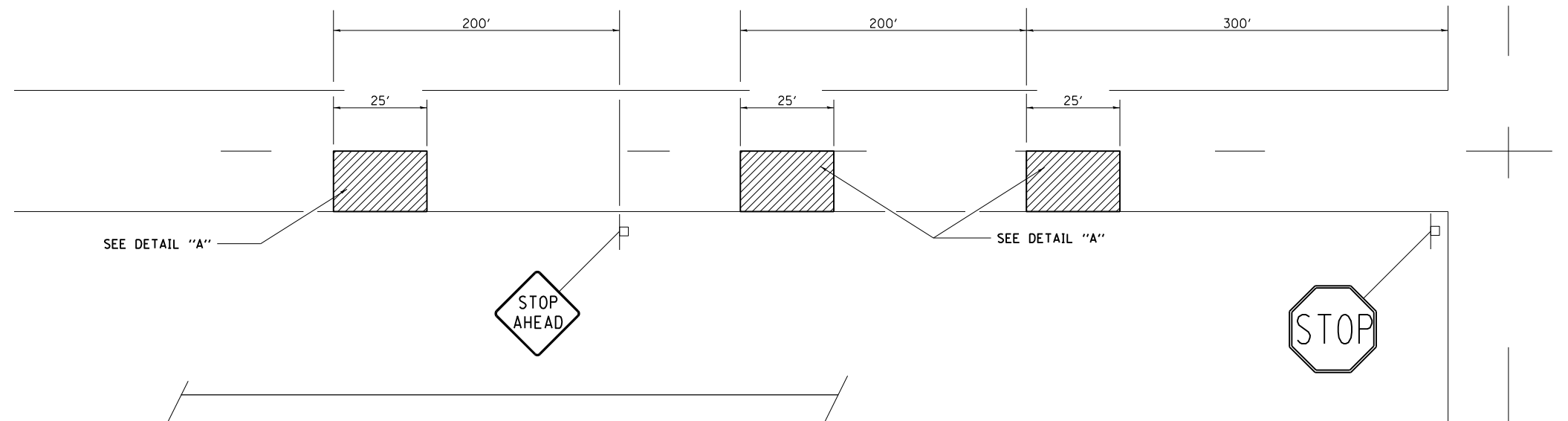
**STATE OF ILLINOIS
DEPARTMENT OF TRANSPORTATION**

PLAN SHEET

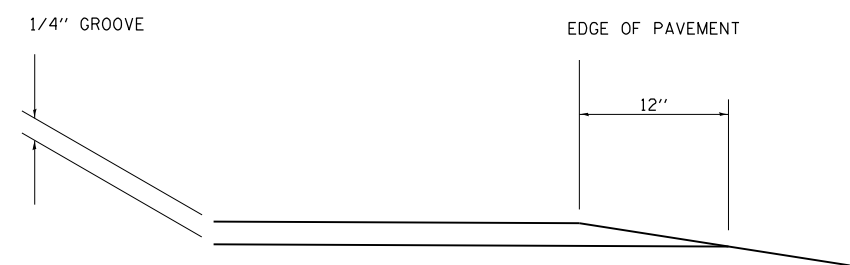
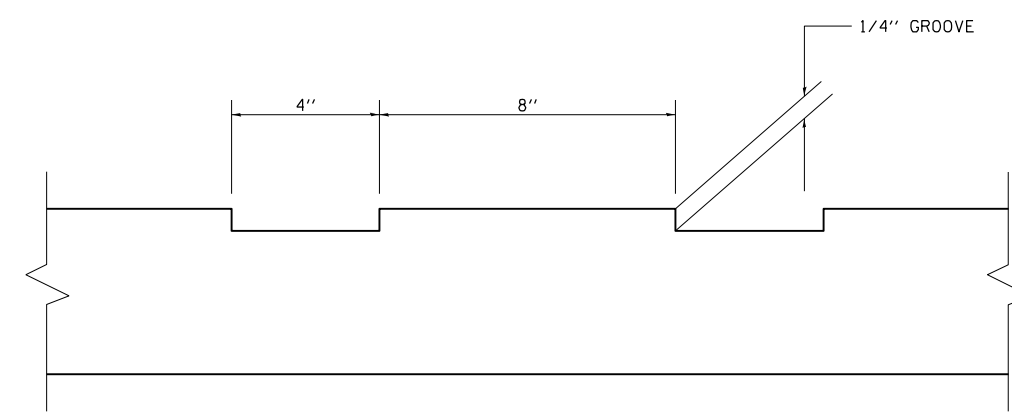
SCALE: SHEET 8 OF 8 SHEETS STA. 860+00 TO STA. 887+86.68

F.A.P. RTE.	SECTION	COUNTY	TOTAL SHEETS	SHEET NO.
832	(113R-5)&(114RS-4)	COLES	25	17
CONTRACT NO. 74A21				
ILLINOIS FED. AID PROJECT				

TYPICAL RUMBLE STRIP APPLICATION IN ADVANCE OF AN INTERSECTION



NOTE: THE 25 FEET RUMBLE AREA HAS 4" WIDE GROOVES SAWED INTO THE PAVEMENT, SEPARATED BY 8" OF EXISTING PAVEMENT. THE SAW CUTS SHALL EXTEND 12" INTO THE SHOULDER TO ALLOW FOR DRAINAGE.



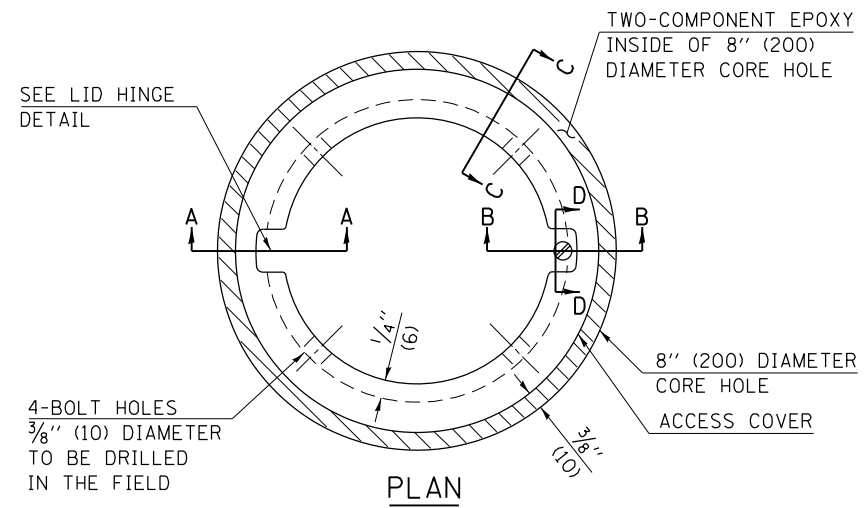
NOT TO SCALE

FILE NAME =	USER NAME = steffenk	DESIGNED -	REVISED - MMO 12-99
pw:\idot-pw.bentley.com\PIDOT\Documents\IDOT Offices\District 7\Projects\74A21\CADD\Drawings\74A21-shr-details.dgn		DRAWN -	REVISED - MKS 04-08
	PLOT SCALE = 200.0000' / in.	CHECKED -	REVISED -
	PLOT DATE = 2/8/2022	DATE -	REVISED -

**STATE OF ILLINOIS
DEPARTMENT OF TRANSPORTATION**

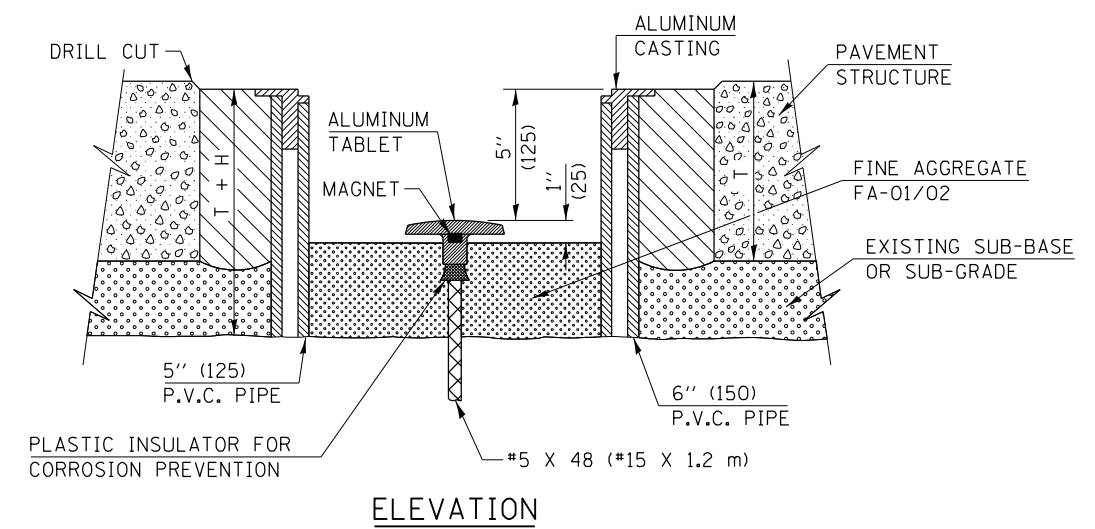
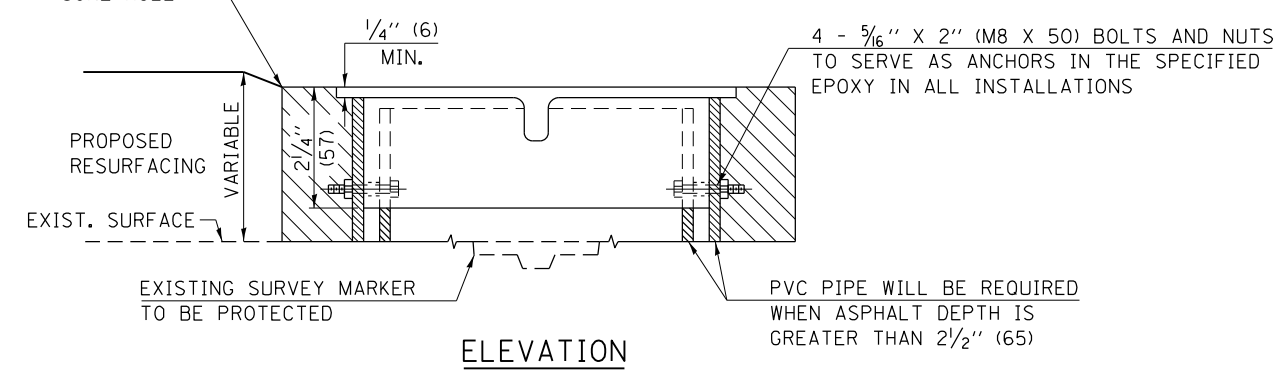
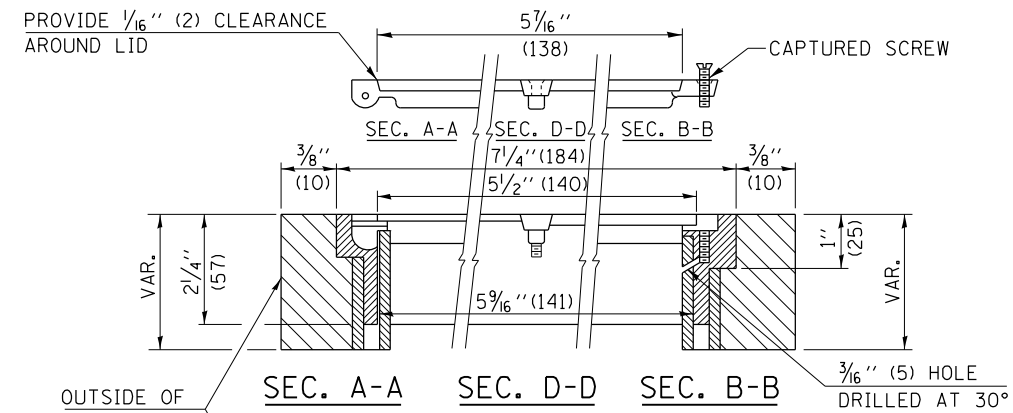
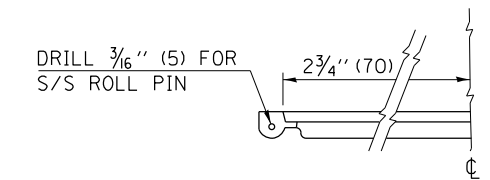
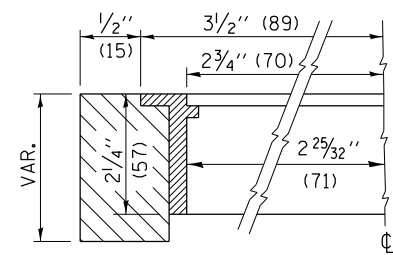
TYPICAL RUMBLE STRIP APPLICATION			
SCALE:	SHEET NO.	OF SHEETS	STA. TO STA.

DISTRICT 7 DETAIL NO. Z0055300				
F.A.P. RTE.	SECTION	COUNTY	TOTAL SHEETS	SHEET NO.
832	(113R-5)&(114R5-4)	COLES	25	19
CONTRACT NO. 74A21				
FED. ROAD DIST. NO.	ILLINOIS FED. AID PROJECT			



- LEGEND**
- ALUMINUM CASTING
 - 5" (125) OR 6" (150) P.V.C. PIPE
 - TWO-COMPONENT EPOXY
- T = THICKNESS OF PAVEMENT STRUCTURE
- H = THE THICKNESS OF THE SUB-BASE GRANULAR + 1" (25)

BILL OF MATERIAL	
ALUMINUM CASTING OF THE DIMENSIONS AND SPECIFICATIONS SHOWN OR OTHER SUBJECT TO ENGINEER'S APPROVAL OF SHOP DRAWINGS,	
4 EACH - 5/16" X 2" (M8 X 50) BOLTS WITH NUTS, EPOXY,	
5" OR 6" (125 mm OR 150 mm) DIAMETER P.V.C. PIPE, SCHEDULE 40 (WHEN REQUIRED).	



EXISTING SURVEY MARKER

PROPOSED SURVEY MARKER

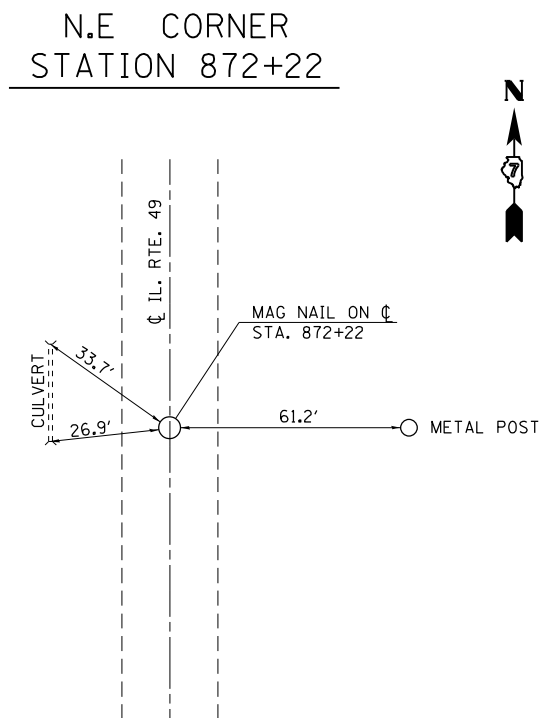
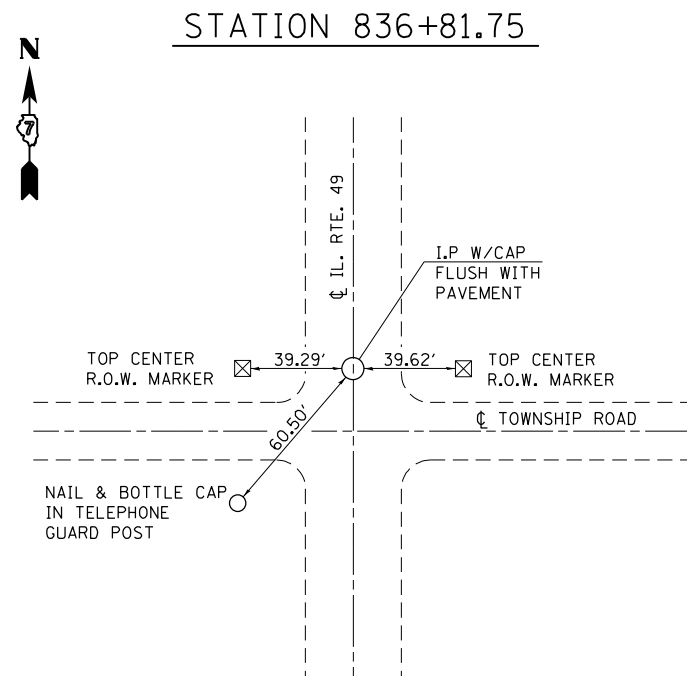
NOT TO SCALE

FILE NAME =	USER NAME = steffennk	DESIGNED -	REVISED - MAD 6-11
p:\dot-pw\bentley.com\PWIDOT\Documents\DOT Offices\District 7\Projects\74A21\CAD\Drawings\74A21-sht-details.dgn		DRAWN -	REVISED -
PLOT SCALE = 200.0000' / in.		CHECKED -	REVISED -
PLOT DATE = 2/8/2022		DATE -	REVISED -

STATE OF ILLINOIS
DEPARTMENT OF TRANSPORTATION

SURVEY MARKER VAULT				
SCALE:	SHEET NO.	OF SHEETS	STA.	TO STA.

DISTRICT 7 DETAIL NO. Z0070202				
F.A.P. RTE.	SECTION	COUNTY	TOTAL SHEETS	SHEET NO.
832	(113R-5)&(114R5-4)	COLES	25	20
CONTRACT NO. 74A21				
FED. ROAD DIST. NO. ILLINOIS FED. AID PROJECT				



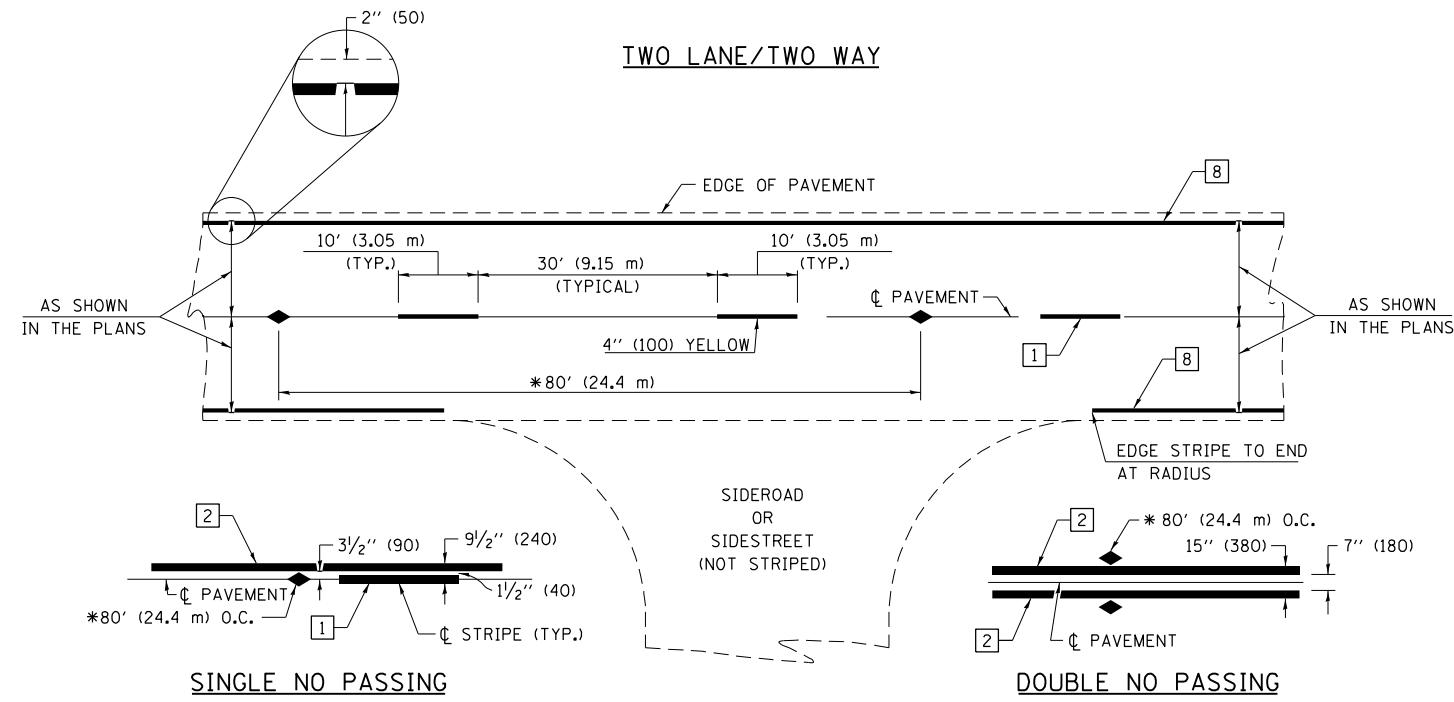
FILE NAME =	USER NAME = steffenmk	DESIGNED -	REVISED -
p:\11dot-pw.bentley.com\PWIDOT\Documents\11DOT Offices\District 7\Projects\74A21\CAD\Drawings\Drawings\74A21-shd-details.dgn		CHECKED -	REVISED -
		DATE -	REVISED -

**STATE OF ILLINOIS
DEPARTMENT OF TRANSPORTATION**

SURVEY MARKERS AND MONUMENT TIES

SCALE: NA	SHEET NO. 1 OF 1 SHEETS	STA.	TO STA.
-----------	-------------------------	------	---------

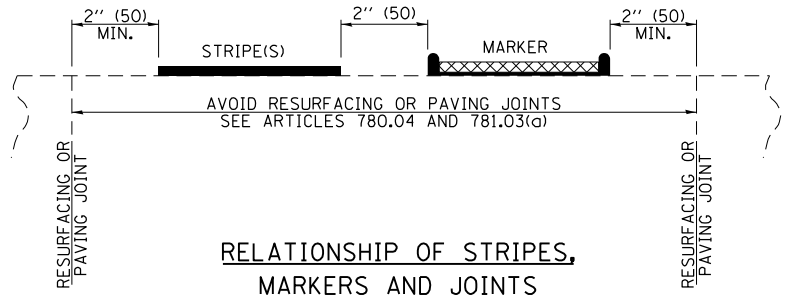
F.A.P. RTE.	SECTION	COUNTY	TOTAL SHEETS	SHEET NO.
832	(113R-5)&(114R5-4)	COLES	25	21
CONTRACT NO. 74A21				
ILLINOIS FED. AID PROJECT				



* REDUCE TO 40' (12.2 m) O.C. ON CURVES WITH POSTED OR ADVISORY SPEEDS OF 45 mph (70 km/h) OR LESS.

PAVEMENT MARKING LEGEND

- 1 4" (100) SKIP-DASH (YELLOW)
- 2 4" (100) SOLID (YELLOW)
- 3 12" (300) DIAGONAL (YELLOW)
- 4 4" (100) DOUBLE YELLOW (NARROW)
- 5 12" (300) SOLID WHITE
- 6 RESERVED
- 7 6" (150) SKIP-DASH (WHITE)
- 8 4" (100) SOLID (WHITE)
- 9 12" (300) DIAGONAL (WHITE)
- 10 6" (150) SOLID (WHITE)
- 11 24" (600) STOP BAR (WHITE)
- 12 8" (200) SOLID (WHITE)
- 13 4" (100) PARKING WHITE

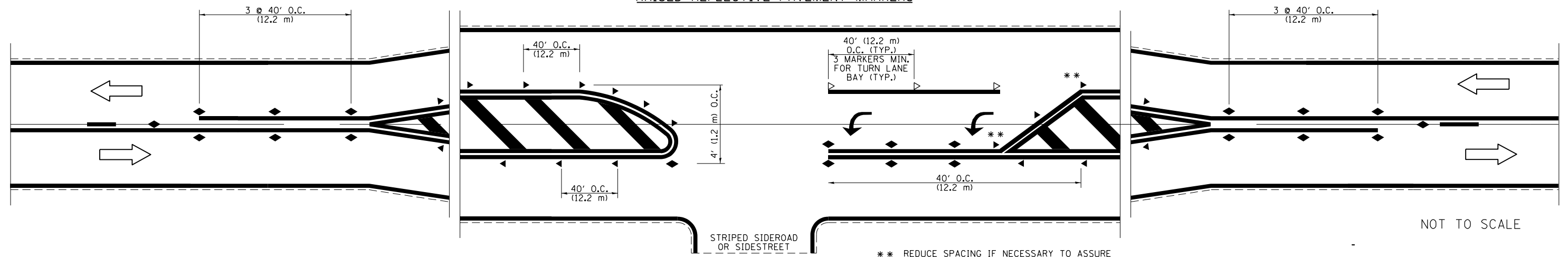


RELATIONSHIP OF STRIPES, MARKERS AND JOINTS

TYPICAL PAVEMENT MARKERS LEGEND

- ◆ TWO-WAY AMBER MARKER
- ▶ ONE-WAY AMBER MARKER
- ▷ ONE-WAY CRYSTAL MARKER

RAISED REFLECTIVE PAVEMENT MARKERS



** REDUCE SPACING IF NECESSARY TO ASSURE MARKERS AT CORNER POINTS.

FILE NAME =	USER NAME = steffenk	DESIGNED -	REVISED -
pw:\idot-pw\bentley.com\PWIDOT\Documents\IDOT Offices\District 7\Projects\74A21\CADD\Drawings\Drawings\74A21-shd-details.dgn		CHECKED -	REVISED -
		DATE -	REVISED -

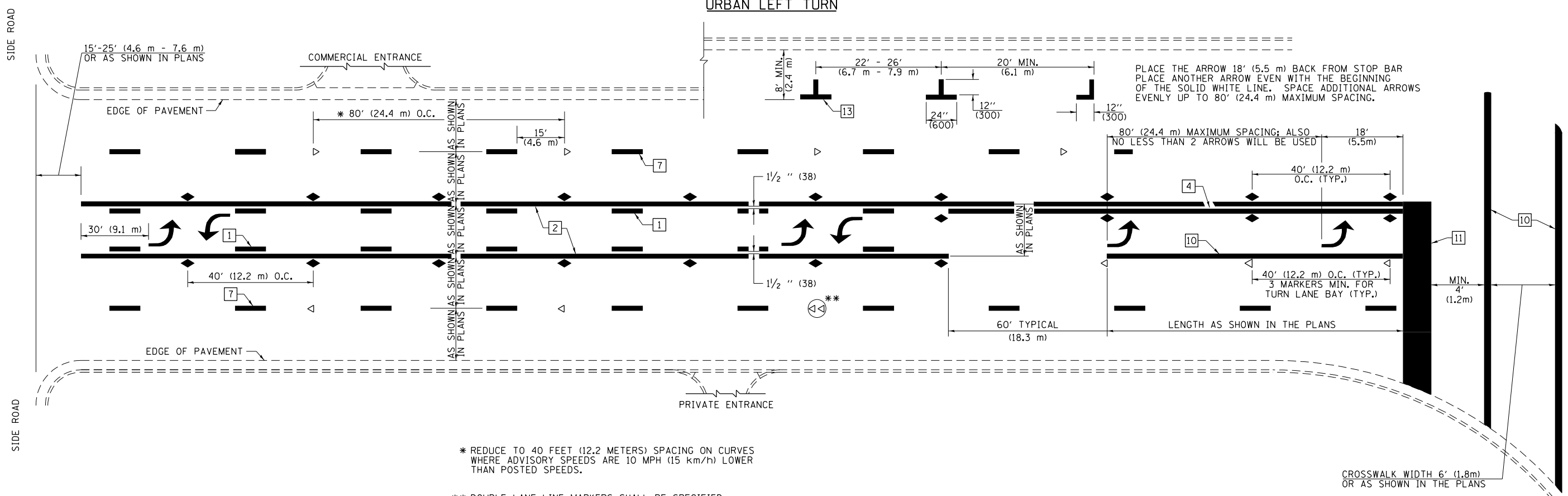
**STATE OF ILLINOIS
DEPARTMENT OF TRANSPORTATION**

**PAVEMENT MARKING AND RAISED REFLECTIVE PAVEMENT MARKERS
(RURAL & URBAN APPLICATIONS)**

SCALE: SHEET NO. 1 OF 4 SHEETS STA. TO STA.

DISTRICT 7 DETAIL NO. 7800001				
F.A.P. RTE.	SECTION	COUNTY	TOTAL SHEETS	SHEET NO.
832	(113R-5)&(114R5-4)	COLES	25	22
CONTRACT NO. 74A21				
ILLINOIS FED. AID PROJECT				

URBAN LEFT TURN



PLACE THE ARROW 18' (5.5 m) BACK FROM STOP BAR
PLACE ANOTHER ARROW EVEN WITH THE BEGINNING
OF THE SOLID WHITE LINE. SPACE ADDITIONAL ARROWS
EVENLY UP TO 80' (24.4 m) MAXIMUM SPACING.

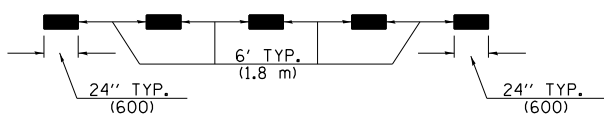
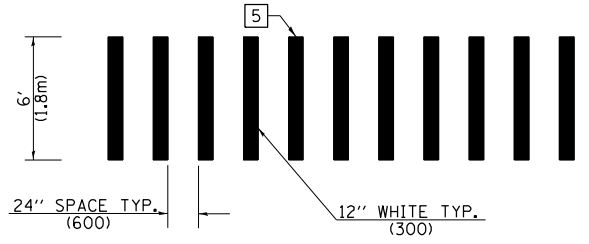
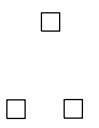
* REDUCE TO 40 FEET (12.2 METERS) SPACING ON CURVES
WHERE ADVISORY SPEEDS ARE 10 MPH (15 km/h) LOWER
THAN POSTED SPEEDS.

** DOUBLE LANE LINE MARKERS SHALL BE SPECIFIED
AND SPACED AS SHOWN IN HIGHWAY STANDARD
781001 FOR MULTI-LANE DIVIDED AND UNDIVIDED
HIGHWAYS.

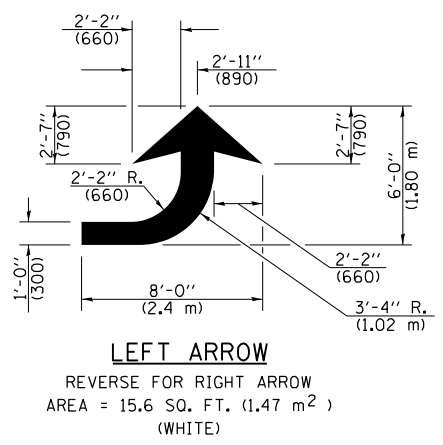
PAVEMENT MARKING LEGEND

- 1 4" (100) SKIP-DASH (YELLOW)
- 2 4" (100) SOLID (YELLOW)
- 3 12" (300) DIAGONAL (YELLOW)
- 4 4" (100) DOUBLE YELLOW (NARROW)
- 5 12" (300) SOLID WHITE
- 6 RESERVED
- 7 6" (150) SKIP-DASH (WHITE)
- 8 4" (100) SOLID (WHITE)
- 9 12" (300) DIAGONAL (WHITE)
- 10 6" (150) SOLID (WHITE)
- 11 24" (600) STOP BAR (WHITE)
- 12 8" (200) SOLID (WHITE)
- 13 4" (100) PARKING WHITE

GENERAL NOTES

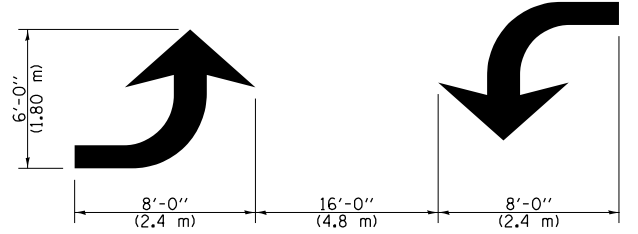


LANE LINE EXTENSIONS



LEFT ARROW

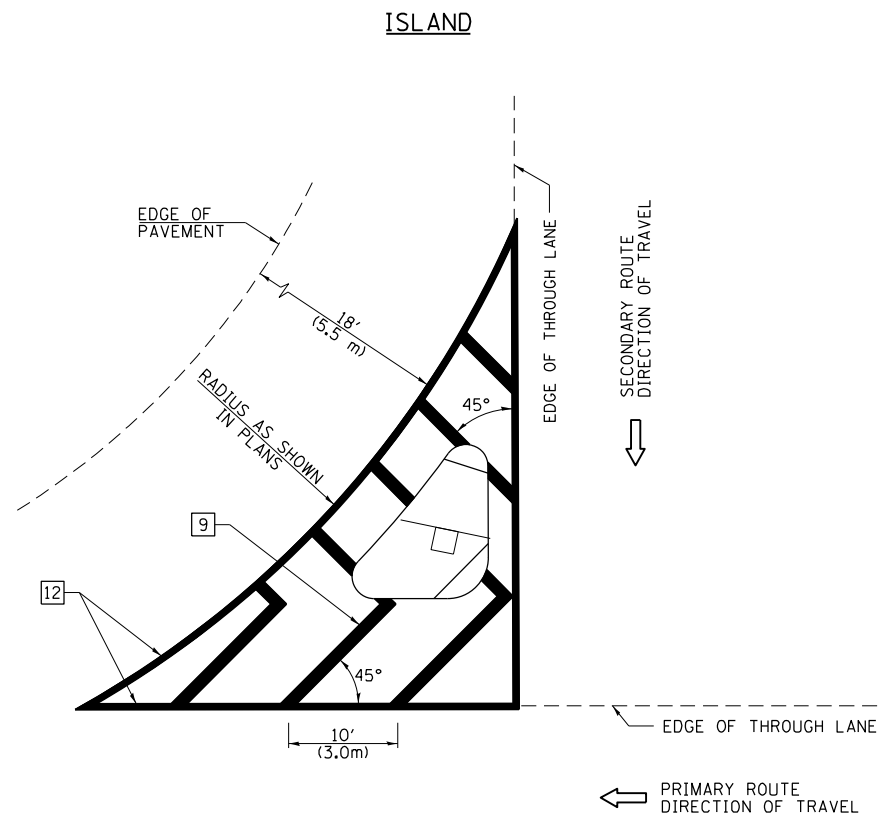
REVERSE FOR RIGHT ARROW
AREA = 15.6 SQ. FT. (1.47 m²)
(WHITE)



TYPICAL DOUBLE
TURN ARROWS (WHITE)

NOT TO SCALE

FILE NAME =	USER NAME = steffenk	DESIGNED -	REVISED -	STATE OF ILLINOIS DEPARTMENT OF TRANSPORTATION	PAVEMENT MARKING AND RAISED REFLECTIVE PAVEMENT MARKERS (RURAL & URBAN APPLICATIONS)	F.A.P. RTE.	SECTION	COUNTY	TOTAL SHEETS	SHEET NO.	
pw:\idot-pw\bentley.com\PWIDOT\Documents\IDOT Offices\District 7\Projects\74A21\CA00\Drawings\74A21-sht-details.dgn	DRWN	REVISIONS	REVISIONS			832	(113R-5)&(114R5-4)	COLES	25	23	
PLOT SCALE = 200.0000' / in.	CHECKED -	REVISIONS	REVISIONS			CONTRACT NO. 74A21					
PLOT DATE = 2/8/2022	DATE -	REVISIONS	REVISIONS			ILLINOIS FED. AID PROJECT					

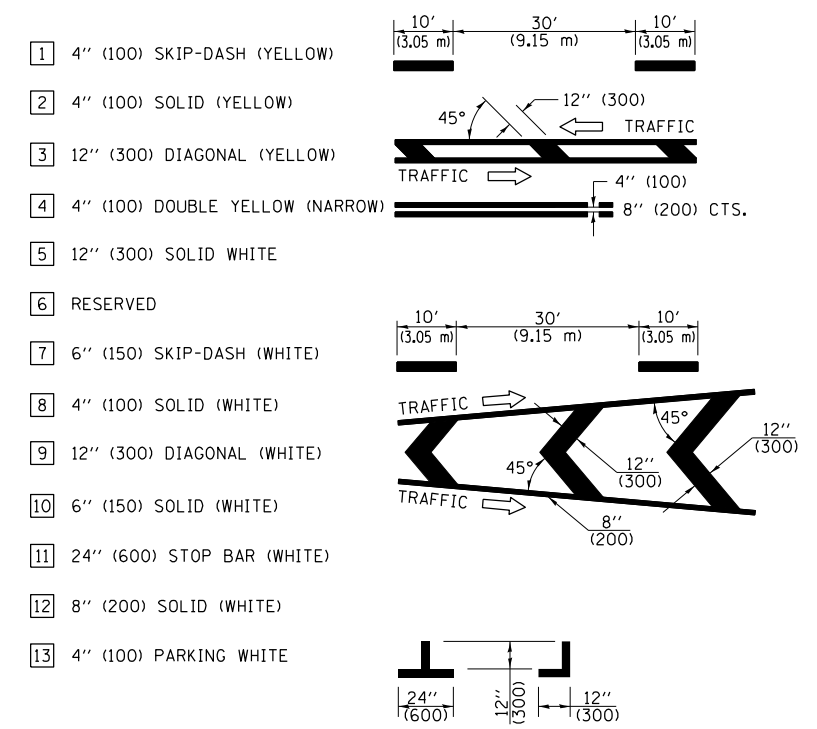


GENERAL NOTES

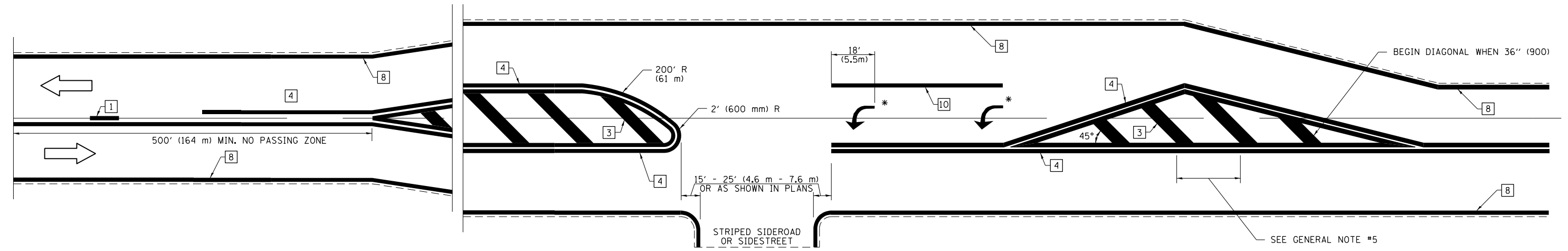
1. RAISED AND CORRUGATED MEDIANS SHALL BE OUTLINED WITH [2] IF PRESENT.
2. SOME OF THE INFORMATION INCLUDED WITH THIS DETAIL MAY NOT BE APPLICABLE TO THIS IMPROVEMENT.
3. PAVEMENT MARKINGS ARE TO BE EXTENDED THROUGH OMISSIONS WHEN APPLICABLE.
4. FINAL PAVEMENT MARKINGS SHALL BE IN PLACE PRIOR TO PLACING ANY RAISED REFLECTIVE PAVEMENT MARKERS.
5. THE FOLLOWING CRITERIA SHALL BE USED FOR SELECTING THE DIAGONAL PAVEMENT MARKING SPACING:

< 30 MPH (< 50 km/h)	15' (4.5 m)
30-45 MPH (50-75 km/h)	20' (6.0 m)
> 45 MPH (> 75 km/h)	30' (9.0 m)

PAVEMENT MARKING LEGEND



RURAL LEFT TURN STRIPING



* PLACE AN ARROW 18' (5.5 m) BACK FROM STOP BAR. PLACE ANOTHER ARROW EVEN WITH THE BEGINNING OF THE SOLID WHITE LINE. SPACE ADDITIONAL ARROWS EVENLY UP TO 80' (24.4 m) MAXIMUM SPACING. USE MINIMUM OF 2 ARROWS.

NOT TO SCALE

FILE NAME =	USER NAME = steffenmk	DESIGNED -	REVISED -
p:\dot-pw\bentley.com\PWIDOT\Documents\DOT Offices\District 7\Projects\74A21\CAD\Drawings\74A21-sht-details.dgn		DRAWN -	REVISED -
PLOT SCALE = 200.0000' / in.		CHECKED -	REVISED -
PLOT DATE = 2/8/2022		DATE -	REVISED -

**STATE OF ILLINOIS
DEPARTMENT OF TRANSPORTATION**

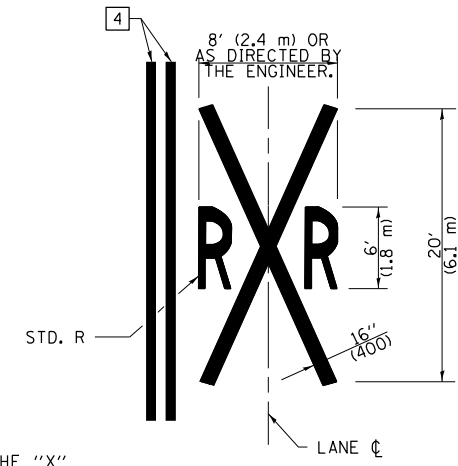
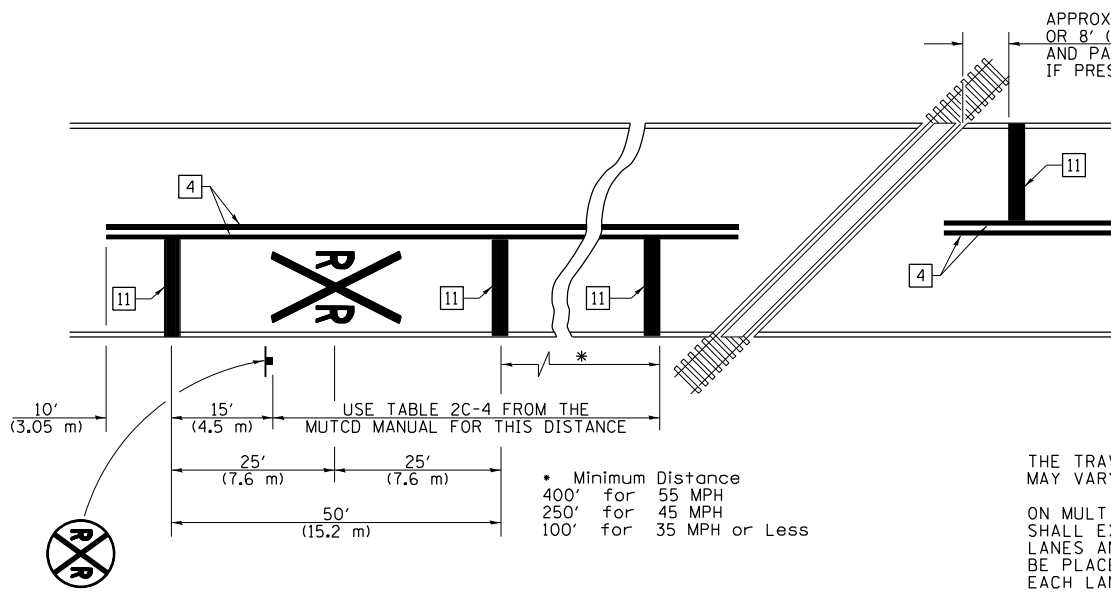
**PAVEMENT MARKING AND RAISED REFLECTIVE PAVEMENT MARKERS
(RURAL & URBAN APPLICATIONS)**

SCALE: SHEET NO. 3 OF 4 SHEETS STA. TO STA.

DISTRICT 7 DETAIL NO. 7800001				
F.A.P. RTE.	SECTION	COUNTY	TOTAL SHEETS	SHEET NO.
832	(113R-5)&(114R5-4)	COLES	25	24
CONTRACT NO. 74A21				
ILLINOIS FED. AID PROJECT				

PAVEMENT MARKINGS AT RAILROAD-HIGHWAY GRADE CROSSING

PAVEMENT MARKING LEGEND



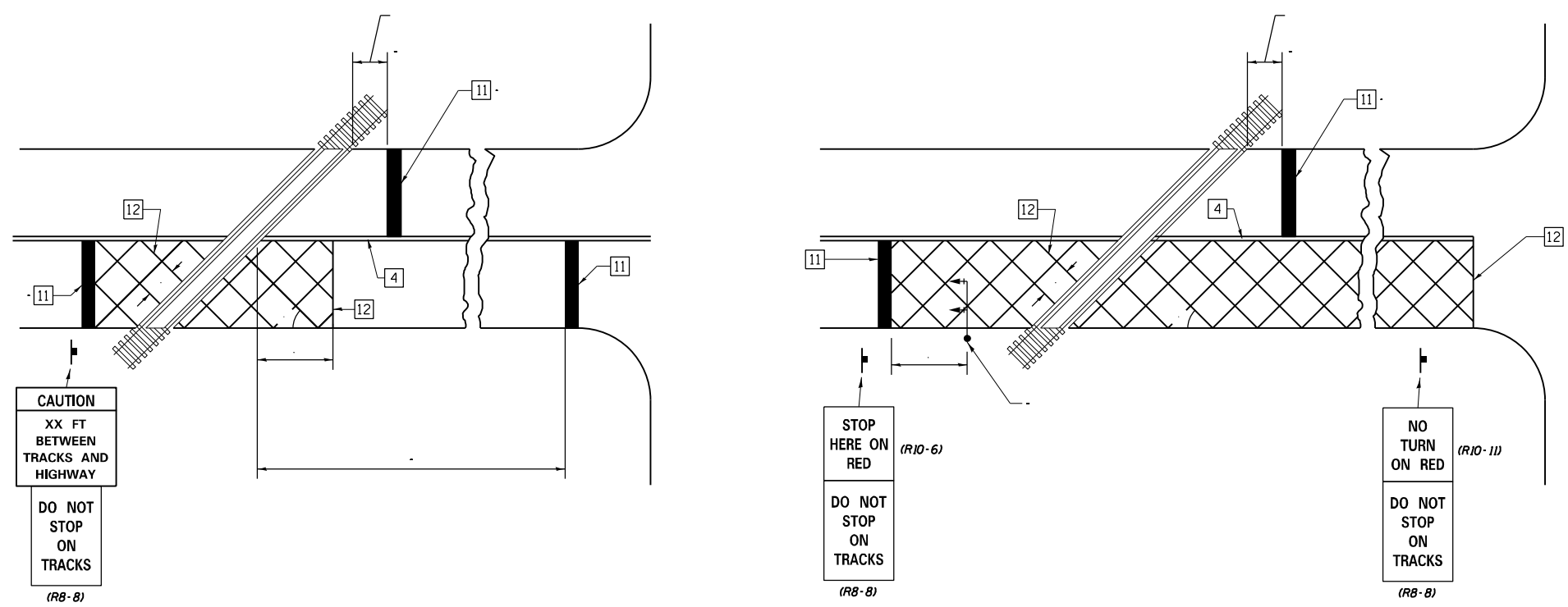
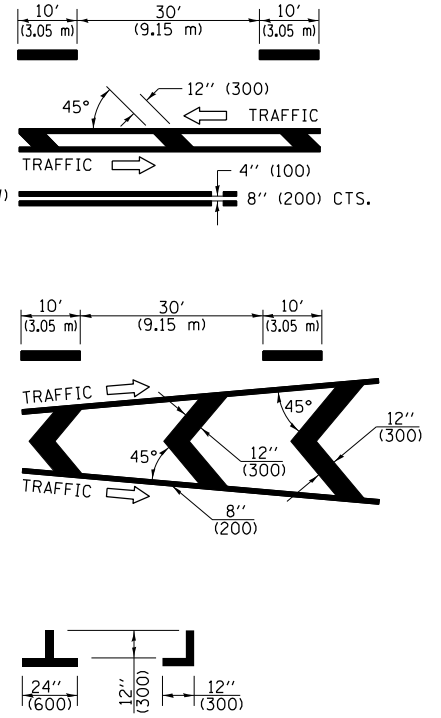
NOTES

THE TRAVERSE SPREAD OF THE "X" MAY VARY ACCORDING TO LANE WIDTH.

ON MULTI-LANE ROADS, THE STOP LINES SHALL EXTEND ACROSS ALL APPROACH LANES AND SEPARATE RXR SYMBOLS SHALL BE PLACED ADJACENT TO EACH OTHER IN EACH LANE.

WHEN THE PAVEMENT MARKING SYMBOL IS USED, A PORTION OF THE SYMBOL SHOULD BE LOCATED DIRECTLY ADJACENT TO THE ADVANCE WARNING SIGN (W10-1) AS PLACED BY TABLE II-1, CONDITION B OF THE MUTCD.

- 1 4" (100) SKIP-DASH (YELLOW)
- 2 4" (100) SOLID (YELLOW)
- 3 12" (300) DIAGONAL (YELLOW)
- 4 4" (100) DOUBLE YELLOW (NARROW)
- 5 12" (300) SOLID WHITE
- 6 RESERVED
- 7 6" (150) SKIP-DASH (WHITE)
- 8 4" (100) SOLID (WHITE)
- 9 12" (300) DIAGONAL (WHITE)
- 10 6" (150) SOLID (WHITE)
- 11 24" (600) STOP BAR (WHITE)
- 12 8" (200) SOLID (WHITE)
- 13 4" (100) PARKING WHITE



GENERAL NOTES

1. SUPPLEMENTAL PAVEMENT MARKINGS TO BE INSTALLED ONLY ON APPROACHES TO INTERSECTIONS CONTROLLED BY TRAFFIC SIGNALS WHICH ARE INTERCONNECTED WITH THE RAILROAD WARNING SIGNALS.
2. EXTEND PAVEMENT MARKINGS TO THE INTERSECTION ONLY WHERE NEAR-SIDE TRAFFIC SIGNALS ARE USED.

SUPPLEMENTAL PAVEMENT MARKING TREATMENT FOR RAILROAD-HIGHWAY GRADE CROSSING

NOT TO SCALE

FILE NAME =	USER NAME = steffenmk	DESIGNED -	REVISED -	STATE OF ILLINOIS DEPARTMENT OF TRANSPORTATION	PAVEMENT MARKING AND RAISED REFLECTIVE PAVEMENT MARKERS (RURAL & URBAN APPLICATIONS)	F.A.P. RTE.	SECTION	COUNTY	TOTAL SHEETS	SHEET NO.
p:\dot-pw\bentley.com\PIW\DOT Documents\DOT Offices\District 7\Projects\74A21\CA00\Drawings\74A21-sht-details.dgn		CHECKED -	REVISED -			832	(113R-5&114R5-4)	COLES	25	25
PLOT SCALE = 200.0000' / in.		DATE -	REVISED -			CONTRACT NO. 74A21				
PLOT DATE = 2/8/2022						ILLINOIS FED. AID PROJECT				