

STATE OF ILLINOIS
DEPARTMENT OF TRANSPORTATION

F.A.U. RTE.	SECTION	COUNTY	TOTAL SHEETS	SHEET NO.
7666	(7,6)RS-3	COLES	11	1
		ILLINOIS	CONTRACT NO. 74A23	

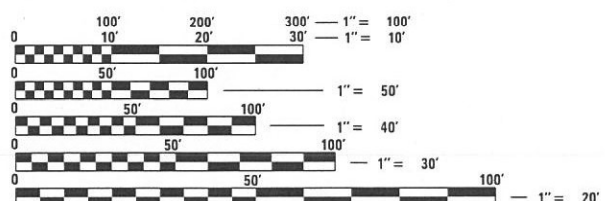
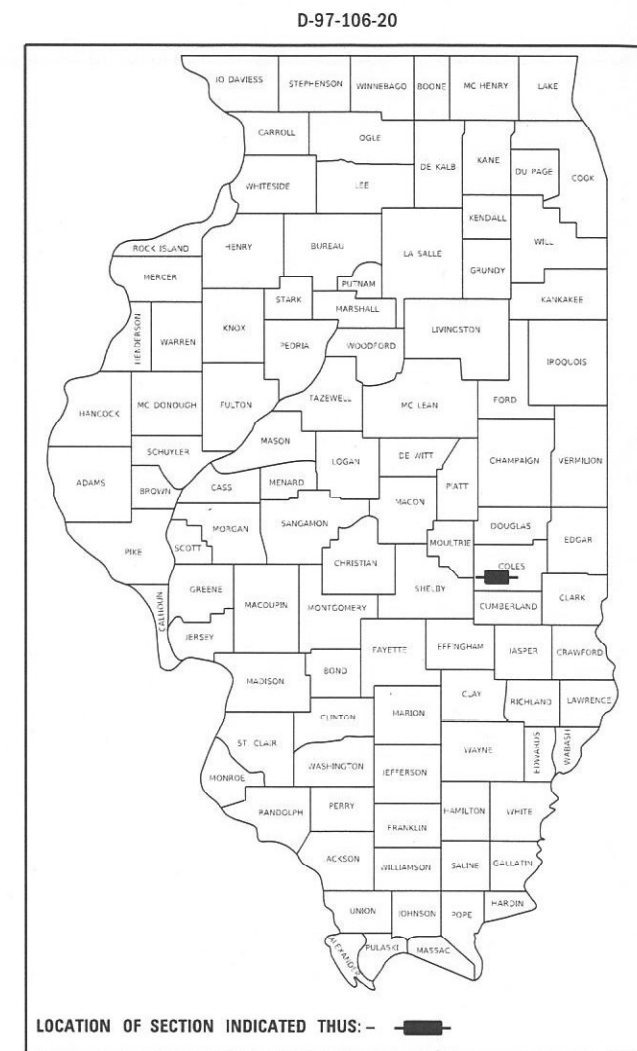
FOR INDEX OF SHEETS, SEE SHEET NO. 2

PROPOSED HIGHWAY PLANS

FAU ROUTE 7666
SECTION (7,6)RS-3
PROJECT STP-E9X1(752)
SMART RESURFACING
COLES COUNTY

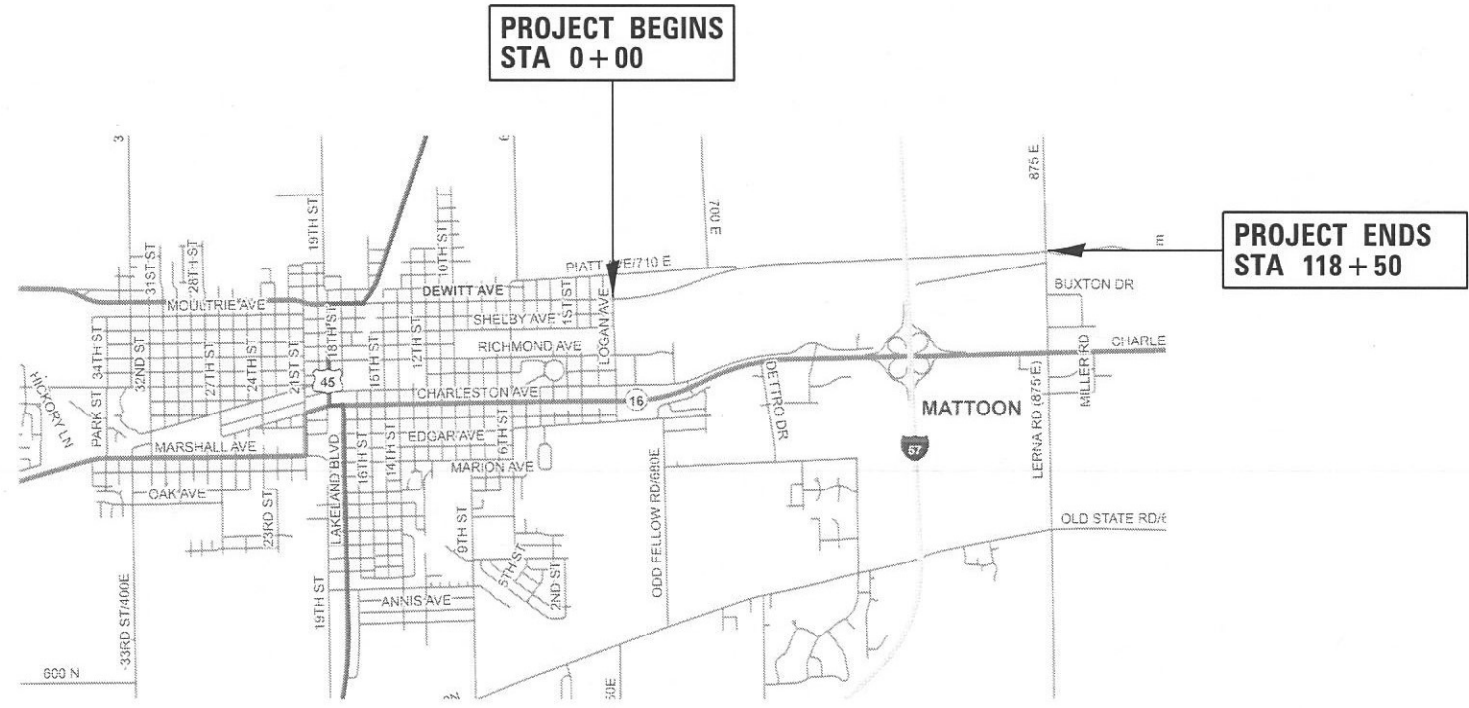
ADT (2019) = 3550

C-97-112-20



FULL SIZE PLANS HAVE BEEN PREPARED USING STANDARD ENGINEERING SCALES. REDUCED SIZED PLANS WILL NOT CONFORM TO STANDARD SCALES. IN MAKING MEASUREMENTS ON REDUCED PLANS, THE ABOVE SCALES MAY BE USED.

J.U.L.I.E.
JOINT UTILITY LOCATION INFORMATION FOR EXCAVATORS
1-800-892-0123
OR 811



PROJECT ENGINEER BRIAN LEWIS
PROJECT MANAGER JESSICA HILLE

GROSS LENGTH = 11,850 FT. = 2.244 MILE
NET LENGTH = 11,850 FT. = 2.244 MILE

CONTRACT NO. 74A23

STATE OF ILLINOIS
DEPARTMENT OF TRANSPORTATION

SUBMITTED JANUARY 27 2020
Jeff P. Myrland
REGIONAL ENGINEER

March 25 2022
[Signature]
ENGINEER OF DESIGN AND ENVIRONMENT

March 2 2022
Stephen M. Lewis
DIRECTOR OF HIGHWAYS PROJECT IMPLEMENTATION

PRINTED BY THE AUTHORITY
OF THE STATE OF ILLINOIS

GENERAL NOTES

THE PROPOSED PROJECT IS LOCATED ON DEWITT AVE FROM LOGAN ST TO LERNA RD IN MATTOON.

THE WORK INCLUDED IN SECTION (7,6)RS-3 CONSISTS OF PATCHING, HMA SURFACE REMOVAL, HMA RESURFACING, PAINT PAVEMENT MARKING, PROTECTING OR RESETTING SURVEY MARKERS, SURVEY MARKER VAULTS, PERMANENT SURVEY MARKERS (TYPE 1), AND OTHER NECESSARY WORK TO COMPLETE THE SECTION.

STATIONING IS ASSUMED TO START AT 0+00 AT THE JOINT BETWEEN PCC AND HMA ON THE EAST LEG OF THE LOGAN ST INTERSECTION.

FINAL PATCHING LOCATIONS WILL BE DETERMINED BY THE ENGINEER.

THERE WILL BE TEMPORARY RAMPS ON THE BIKE PATH AT STATIONS: RIGHT SIDE - 107+45 EOP AND LEFT SIDE - 107+50 EOP.

SHORT TERM PAVEMENT MARKING APPLIED TO ANY MILLED SURFACE SHALL BE PAINT AND THOSE APPLIED TO THE HMA COURSES SHALL BE TAPE.

QUANTITIES FOR THERMOPLASTIC PAVEMENT MARKING - LINE 4" CONSISTS OF 6,885 FEET OF YELLOW AND 23,581 FEET OF WHITE.

THE FOLLOWING RATES OF APPLICATION HAVE BEEN USED IN CALCULATING PLAN QUANTITIES:

HOT MIX ASPHALT

112 LB/SQ YD/INCH

THE FOLLOWING MIXTURE REQUIREMENTS ARE APPLICABLE TO THIS PROJECT:

LOCATION(S)	MIXTURE USE(S)	PG	DESIGN AIR Voids	MIXTURE COMPOSITION	FRICTION AGGREGATE	MIXTURE WEIGHT	QUALITY MANAGEMENT PROGRAM	SUBLOT SIZE	MATERIAL TRANSFER DEVICE (REQUIRED?)
MAINLINE	POLYMERIZED HMA SURFACE COURSE, IL-9.5, MIX "D", N90 (1 1/2")	SBS PG 70-22	4.0% @ N=90	IL - 9.5	MIXTURE D	N90	QCP	1000	N/A
MAINLINE	HOT-MIX ASPHALT PATCHING, CLASS D	PG 64-22	4.0% @ N=70	IL - 19.0	N/A	70	QC/QA	N/A	N/A

INDEX OF SHEETS

SHEET NO.	ITEM
1	COVER SHEET
2	GENERAL NOTES, INDEX OF SHEETS, AND HIGHWAY STANDARDS
3	SUMMARY OF QUANTITIES
4	TYPICAL SECTIONS
5-6	SCHEDULE OF QUANTITIES
7	LOCATION MAP AND TEMPORARY RAMP DETAILS
8-10	PAVEMENT MARKING DETAILS
11	SURVEY MARKER VAULT DETAIL

HIGHWAY STANDARDS

THE FOLLOWING STANDARDS ARE A PART OF THESE PLANS AND ARE INCLUDED FOLLOWING THE LAST NUMBERED SHEET OF THE PLANS.

- 442201-03 CLASS C AND D PATCHES
- 667101-02 PERMANENT SURVEY MARKERS
- 701006-05 OFF-ROAD OPERATIONS, 2L, 2W, 15' TO 24" FROM PAVEMENT EDGE
- 701201-05 LANE CLOSURE, 2L, 2W, DAY ONLY, FOR SPEEDS >= 45 MPH
- 701301-04 LANE CLOSURE, 2L, 2W, SHORT TIME OPERATIONS
- 701306-04 LANE CLOSURE, 2L, 2W, SLOW MOVING OPERATIONS DAY ONLY, FOR SPEEDS >= 45 MPH
- 701311-03 LANE CLOSURE, 2L, 2W, MOVING OPERATIONS - DAY ONLY
- 701901-08 TRAFFIC CONTROL DEVICES
- 000001-08 STANDARD SYMBOLS, ABBREVIATIONS AND PATTERNS
- 001006 DECIMAL OF AN INCH AND OF A FOOT
- 668001-01 U.S. GEOLOGICAL SURVEY AND NATIONAL GEODETIC SURVEY BENCHMARKS, RESETTING METHOD
- 780001-05 TYPICAL PAVEMENT MARKINGS

REV. - MS

MODEL: D:\default
 FILE: MATI.GPJ
 PROJECT: I:\Documents\131001 - Office\District 7\Projects\74A23\CAD\Drawings\74A23-SB-general.dgn

USER NAME = steffennmk	DESIGNED -	REVISED -
	DRAWN -	REVISED -
PLOT SCALE = 100.0000' / in.	CHECKED -	REVISED -
PLOT DATE = 1/26/2022	DATE -	REVISED -

STATE OF ILLINOIS
DEPARTMENT OF TRANSPORTATION

GENERAL NOTES, INDEX OF SHEETS,
AND HIGHWAY STANDARDS

SCALE: SHEET OF SHEETS STA. TO STA.

F.A.U. RTE.	SECTION	COUNTY	TOTAL SHEETS	SHEET NO.
7666	(7,6)RS-3	COLES	11	2
			CONTRACT NO. 74A23	
ILLINOIS FED. AID PROJECT				

80% FED
20% STATE
URBAN

80% FED
20% STATE
URBAN

SUMMARY OF QUANTITIES			TOTAL QUANTITIES	CONSTRUCTION TYPE CODE		
CODE NO	ITEM	UNIT		0005		
40600290	BITUMINOUS MATERIALS (TACK COAT)	POUND	13464	13464		
40600370	LONGITUDINAL JOINT SEALANT	FOOT	11850	11850		
40600990	TEMPORARY RAMP	SQ YD	189	189		
40604164	POLYMERIZED HOT-MIX ASPHALT SURFACE COURSE, IL-9.5, MIX "D", N90	TON	2510	2510		
44000155	HOT-MIX ASPHALT SURFACE REMOVAL, 1 1/2"	SQ YD	29917	29917		
44201785	CLASS D PATCHES, TYPE I, 12 INCH	SQ YD	343	343		
44201789	CLASS D PATCHES, TYPE II, 12 INCH	SQ YD	1435	1435		
44201794	CLASS D PATCHES, TYPE III, 12 INCH	SQ YD	165	165		
44201796	CLASS D PATCHES, TYPE IV, 12 INCH	SQ YD	83	83		
66700205	PERMANENT SURVEY MARKERS, TYPE I	EACH	1	1		
67100100	MOBILIZATION	L SUM	1	1		
70100450	TRAFFIC CONTROL AND PROTECTION, STANDARD 701201	L SUM	1	1		
70100460	TRAFFIC CONTROL AND PROTECTION, STANDARD 701306	L SUM	1	1		

SUMMARY OF QUANTITIES			TOTAL QUANTITIES	CONSTRUCTION TYPE CODE		
CODE NO	ITEM	UNIT		0005		
70107025	CHANGEABLE MESSAGE SIGN	CAL DA	28	28		
70300100	SHORT TERM PAVEMENT MARKING	FOOT	2347	2347		
70300150	SHORT TERM PAVEMENT MARKING REMOVAL	SQ FT	349	349		
* 78000200	THERMOPLASTIC PAVEMENT MARKING - LINE 4"	FOOT	30466	30466		
* 78000600	THERMOPLASTIC PAVEMENT MARKING - LINE 12"	FOOT	60	60		
* 78000650	THERMOPLASTIC PAVEMENT MARKING - LINE 24"	FOOT	43	43		
Z0049799	PROTECTING OR RESETTING SURVEY MARKERS	EACH	3	3		
Z0070202	SURVEY MARKER VAULT	EACH	2	2		

* SPECIALTY ITEM

MODEL: Default
 FILE NAME: p:\project-aw-bee-fwy.com\PIV\DOT\Documents\DOT Office\Drawings\7\Project\74A23\CADD\DATA\CAD\Sheet\74A23-4-1-500.dgn

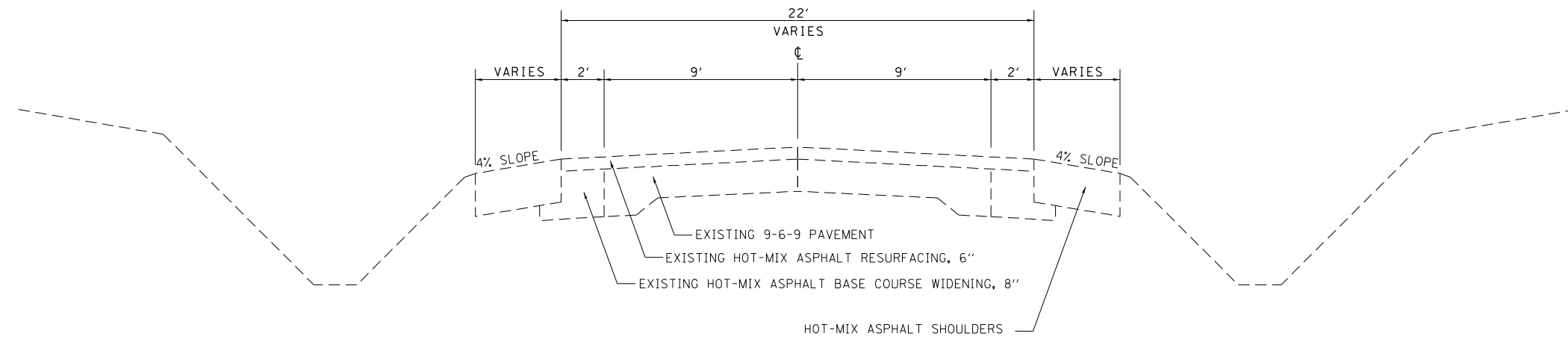
USER NAME = stefenmk	DESIGNED -	REVISED -
PLOT SCALE = 100,0000' / in.	DRAWN -	REVISIONS -
PLOT DATE = 1/25/2022	CHECKED -	REVISIONS -
	DATE -	REVISIONS -

STATE OF ILLINOIS
DEPARTMENT OF TRANSPORTATION

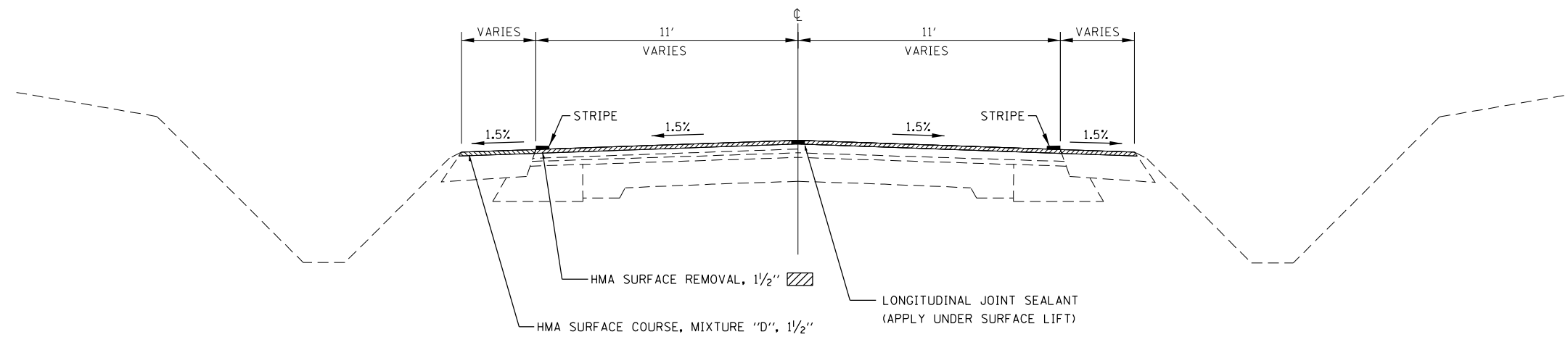
SUMMARY OF QUANTITIES

SCALE: SHEET OF SHEETS STA. TO STA.

F.A.U. RTE.	SECTION	COUNTY	TOTAL SHEETS	SHEET NO.
7666	(7,6)RS-3	COLES	11	3
CONTRACT NO. 74A23				
ILLINOIS FED. AID PROJECT				



EXISTING



PROPOSED

MODEL: Default
 FILE: hma15c_pavultra-cw-bead-fay.com/P/INDOT/Document/1/INDOT/Office/Dir/rdet_7/Project/74A23/CADD/Draw/CAD/Sheet/74A23-sh-hwy/cad.dgn

USER NAME = stefenmk	DESIGNED -	REVISED -
	DRAWN -	REVISED -
PLOT SCALE = 100,0000' / in.	CHECKED -	REVISED -
PLOT DATE = 1/25/2022	DATE -	REVISED -

STATE OF ILLINOIS
DEPARTMENT OF TRANSPORTATION

TYPICAL SECTIONS				
SCALE:	SHEET	OF	SHEETS	STA. TO STA.

F.A.U. RTE.	SECTION	COUNTY	TOTAL SHEETS	SHEET NO.
7666	(7.6)RS-3	COLES	11	4
CONTRACT NO. 74A23				
ILLINOIS FED. AID PROJECT				

PAVING SCHEDULE

STATION	TO	STATION	LENGTH	WIDTH OF MAINLINES	WIDTH OF SHOULDERS	AREA	HOT-MIX ASPHALT SURFACE REMOVAL, 1 1/2"	BITUMINOUS MATERIAL (TACK COAT)	LONGITUDINAL JOINT SEALANT	POLYMERIZED HOT-MIX ASPHALT SURFACE COURSE, IL-9.5, MIX "D", N90
			FOOT	FOOT	FOOT	SQ YD	SQ YD	POUNDS	FOOT	TON
0+00		2+07	207	24	15	805	805	363	207	64
2+07		3+52	145	22	9	427	427	193	145	35
3+52		115+10	11158	22	0	27276	27276	12274	11158	2292
115+10		116+10	100	26	0	267	267	120	100	23
116+10		118+00	190	30	0	592	2592	266	190	50
118+00		118+50	50	152	16	550	550	248	50	46
TOTAL						29917	29917	13464	11850	2510

PAVEMENT MARKING SCHEDULE

STATION	TO	STATION	LENGTH	THERMOPLASTIC PAVEMENT MARKING - LINE 4" (WHITE)	THERMOPLASTIC PAVEMENT MARKING - LINE 4" (YELLOW)	THERMOPLASTIC PAVEMENT MARKING - LINE 12" (WHITE)	THERMOPLASTIC PAVEMENT MARKING - LINE 24" (WHITE)	SHORT TERM PAVEMENT MARKING	SHORT TERM PAVEMENT MARKING REMOVAL
			FOOT	FOOT	FOOT	FOOT	FOOT	FOOT	SQ FT
0+00		118+50	11850	23581	6885	60	43	2347	349
TOTAL			11850	23581	6885	60	43	2347	349
				30466					

TEMPORARY RAMP SCHEDULE

STATION	TO	STATION	LENGTH	WIDTH	AREA	TEMPORARY RAMP
			FOOT	FOOT	SQ FT	SQ YD
0+00		0+05	5	26	130	14
33+64		35+00	136	5	680	76
107+42		107+47	5	12	130	7
107+48		107+53	5	12	130	7
118+45		118+50	5	154	770	86
TOTAL						189

SURVEY MARKER SCHEDULE

SURVEY POINT	STATION	OFFSET	NORTHING	EASTING	PROTECTING OR RESETTING SURVEY MARKER	SURVEY MARKER VAULT	PERMANENT SURVEY MARKER, TYPE 1
					EACH	EACH	EACH
1000	241+75	0.0	1028771.7970	989970.9570	1		1
1001	216+32	0.0	1028713.2570	987423.8810	1	1	
1002	215+48	0.0	1028711.0460	987336.7430	1	1	
TOTAL					3	2	1

MODEL: Default
 FILE NAME: p:\projects\74a23\cadd\data\CAD\pfiles\74a23\pfiles\schedule.dgn

USER NAME = stefnrmk	DESIGNED -	REVISED -
	DRAWN -	REVISED -
PLOT SCALE = 100,0000' / in.	CHECKED -	REVISED -
PLOT DATE = 1/25/2022	DATE -	REVISED -

**STATE OF ILLINOIS
DEPARTMENT OF TRANSPORTATION**

SCHEDULE OF QUANTITIES

SCALE: SHEET OF SHEETS STA. TO STA.

F.A.U. RTE.	SECTION	COUNTY	TOTAL SHEETS	SHEET NO.
7666	(7.6)RS-3	COLES	11	5
CONTRACT NO. 74A23				
		ILLINOIS	FED. AID PROJECT	

WESTBOUND

Table with 8 columns: STATION, SIDE, LENGTH (FT), WIDTH (FT), TYPE I (SQ YD), TYPE II (SQ YD), TYPE III (SQ YD), TYPE IV (SQ YD). Contains 88 rows of patch data for Westbound traffic.

WESTBOUND

Table with 8 columns: STATION, SIDE, LENGTH (FT), WIDTH (FT), TYPE I (SQ YD), TYPE II (SQ YD), TYPE III (SQ YD), TYPE IV (SQ YD). Contains 88 rows of patch data for Westbound traffic, including summary rows at the bottom.

EASTBOUND

Table with 8 columns: STATION, SIDE, LENGTH (FT), WIDTH (FT), TYPE I (SQ YD), TYPE II (SQ YD), TYPE III (SQ YD), TYPE IV (SQ YD). Contains 88 rows of patch data for Eastbound traffic.

EASTBOUND

Table with 8 columns: STATION, SIDE, LENGTH (FT), WIDTH (FT), TYPE I (SQ YD), TYPE II (SQ YD), TYPE III (SQ YD), TYPE IV (SQ YD). Contains 88 rows of patch data for Eastbound traffic, including summary rows at the bottom.

MODEL: Default
FILE: Mainfile_psd\uldrct-pw-benefy.com\FIN\DOT\Documents\DOT_Offices\Director_2\Project\74A23\CADD\DATA\CAD\Sheet\DOT_74A23-ES-Schedule.dwg

Metadata table with 4 columns: USER NAME, DESIGNED, DRAWN, PLOT SCALE, PLOT DATE, CHECKED, DATE, REVISED.

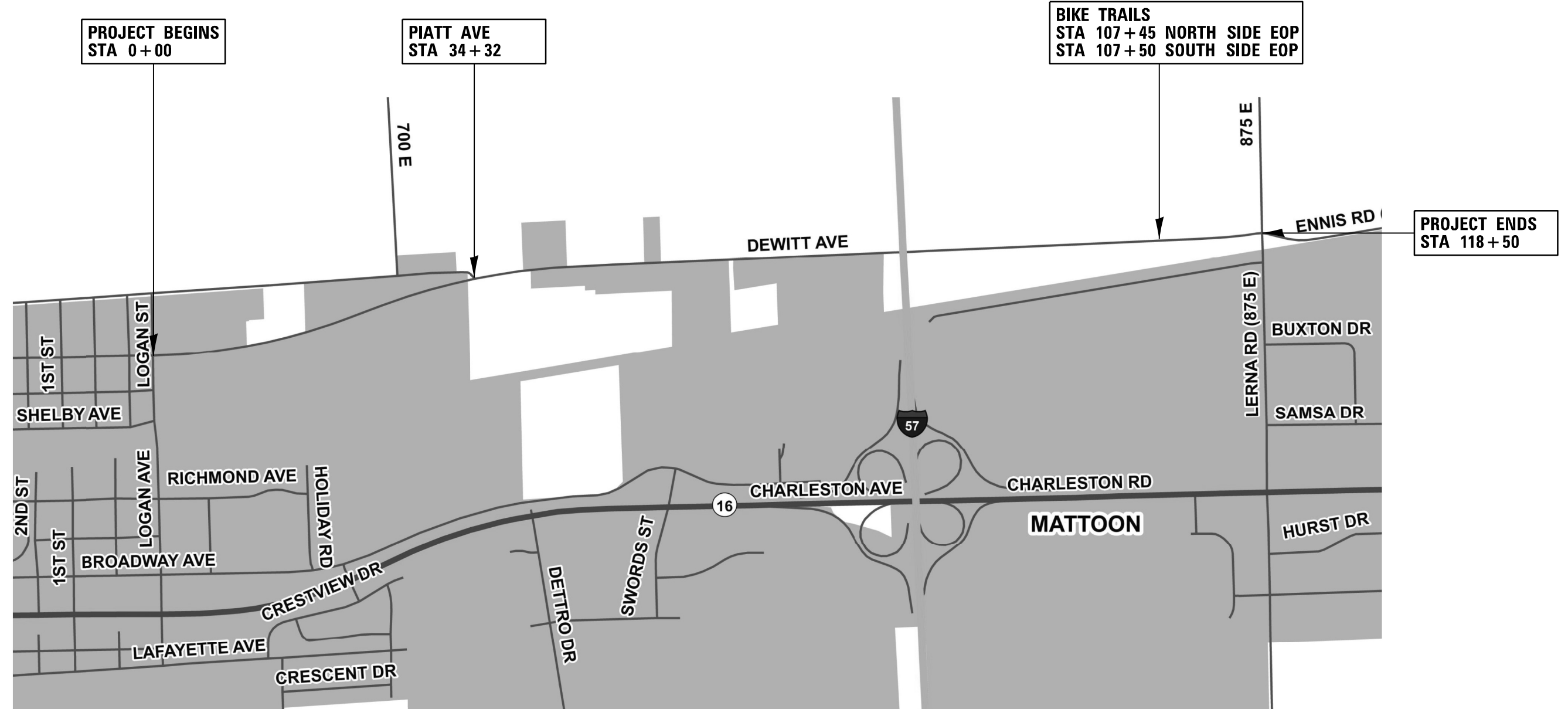
STATE OF ILLINOIS
DEPARTMENT OF TRANSPORTATION

SCHEDULE OF PATCHES

SCALE: SHEET OF SHEETS STA. TO STA.

Summary table with 6 columns: F.A.U. RTE., SECTION, COUNTY, TOTAL SHEETS, SHEET NO., CONTRACT NO. 74A23.

LOCATION MAP

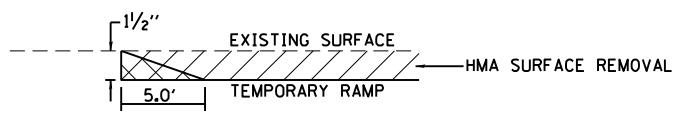


**PROJECT BEGINS
STA 0 + 00**

**PIATT AVE
STA 34 + 32**

**BIKE TRAILS
STA 107 + 45 NORTH SIDE EOP
STA 107 + 50 SOUTH SIDE EOP**

**PROJECT ENDS
STA 118 + 50**



TEMPORARY RAMP
 STA 0+00 TO STA 0+05
 STA 33+64 TO STA 35+00
 STA 107+42 TO STA 107+47
 STA 107+48 TO STA 107+53
 STA 118+45 TO STA 118+50

NOT TO SCALE

MODEL: Default
 FILE: \\matf-pw-bentley.com\PW\DOT\Documents\DOT_Offices\Dir\dr_7\Project\74A23\CADD\DATA\CAD\Sheet\74A23-shc-detailed.dgn

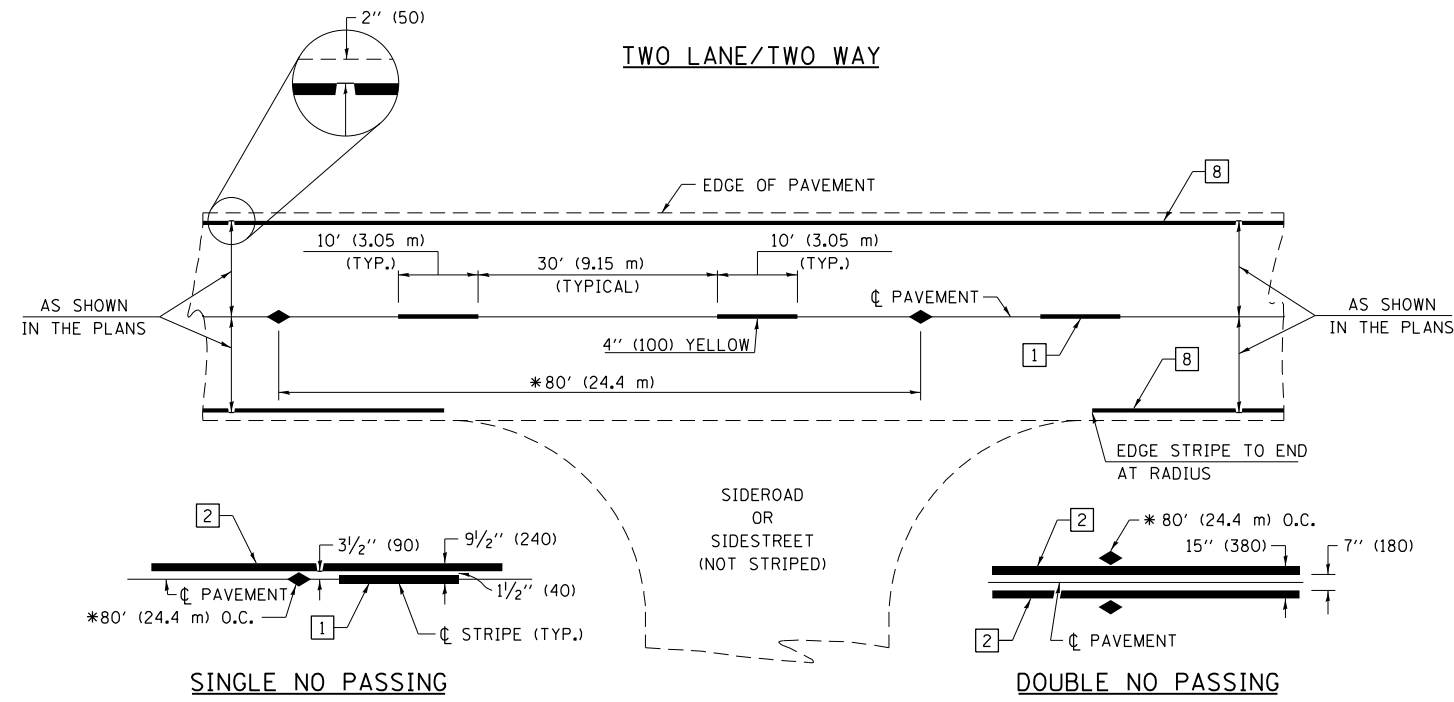
USER NAME = stefenmk	DESIGNED -	REVISED -
	DRAWN -	REVISED -
PLOT SCALE = 100,0000' / in.	CHECKED -	REVISED -
PLOT DATE = 1/25/2022	DATE -	REVISED -

**STATE OF ILLINOIS
DEPARTMENT OF TRANSPORTATION**

LOCATION MAP AND TEMPORARY RAMP DETAIL

SCALE: SHEET OF SHEETS STA. TO STA.

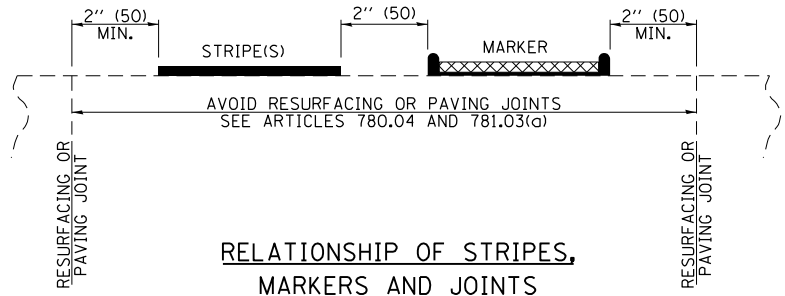
F.A.U. RTE.	SECTION	COUNTY	TOTAL SHEETS	SHEET NO.
7666	(7,6)RS-3	COLES	11	7
CONTRACT NO. 74A23				
ILLINOIS FED. AID PROJECT				



* REDUCE TO 40' (12.2 m) O.C. ON CURVES WITH POSTED OR ADVISORY SPEEDS OF 45 mph (70 km/h) OR LESS.

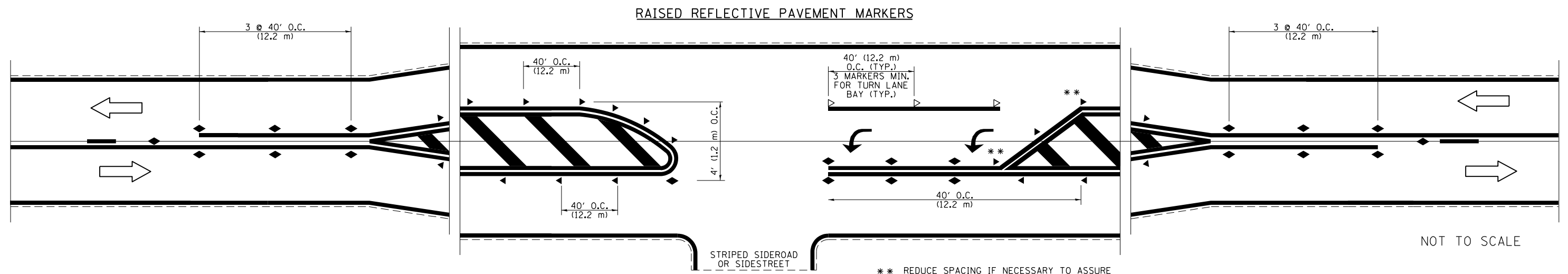
PAVEMENT MARKING LEGEND

- 1 4" (100) SKIP-DASH (YELLOW)
 - 2 4" (100) SOLID (YELLOW)
 - 3 12" (300) DIAGONAL (YELLOW)
 - 4 4" (100) DOUBLE YELLOW (NARROW)
 - 5 12" (300) SOLID WHITE
 - 6 RESERVED
 - 7 6" (150) SKIP-DASH (WHITE)
 - 8 4" (100) SOLID (WHITE)
 - 9 12" (300) DIAGONAL (WHITE)
 - 10 6" (150) SOLID (WHITE)
 - 11 24" (600) STOP BAR (WHITE)
 - 12 8" (200) SOLID (WHITE)
 - 13 4" (100) PARKING WHITE
-



TYPICAL PAVEMENT MARKERS LEGEND

- ◆ TWO-WAY AMBER MARKER
- ▶ ONE-WAY AMBER MARKER
- ▷ ONE-WAY CRYSTAL MARKER



FILE NAME =	USER NAME = steffenk	DESIGNED -	REVISED -
p:\dot-pw\bentley.com\PWIDOT\Documents\DOT Offices\District 7\Projects\74A23\CADD\Drawings\Drawings\74A23-sht-details.dgn		CHECKED -	REVISED -
Default	PLOT DATE = 1/25/2022	DATE -	REVISED -

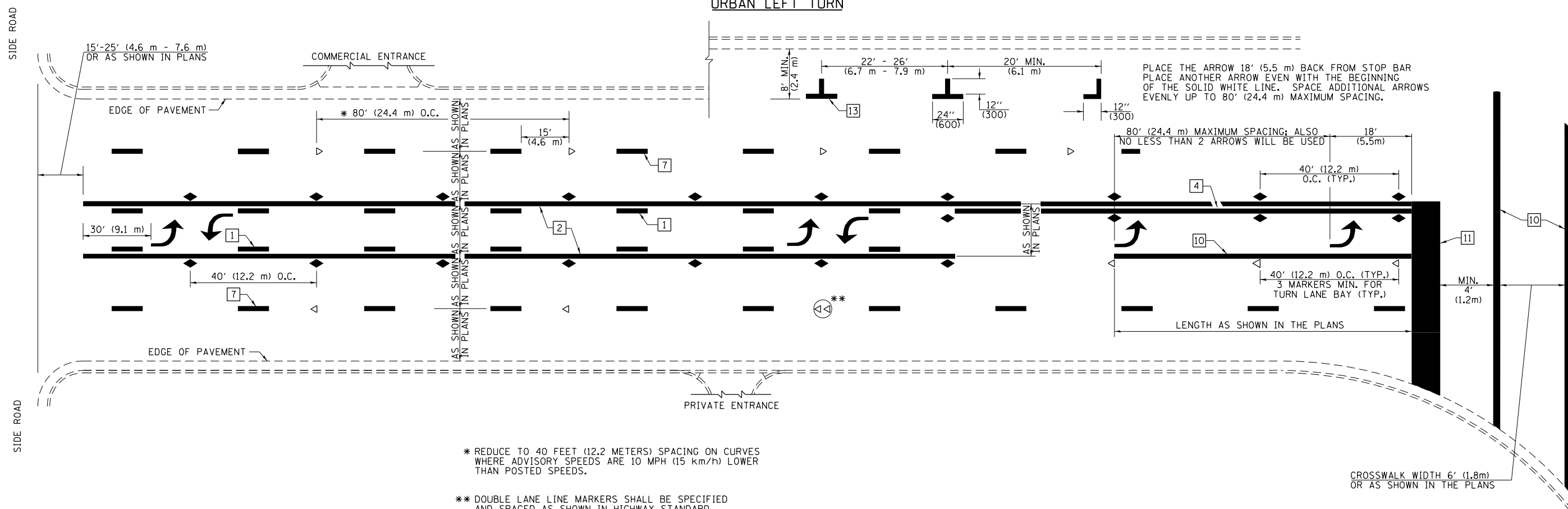
**STATE OF ILLINOIS
DEPARTMENT OF TRANSPORTATION**

**PAVEMENT MARKING AND RAISED REFLECTIVE PAVEMENT MARKERS
(RURAL & URBAN APPLICATIONS)**

SCALE: SHEET OF SHEETS STA. TO STA.

DISTRICT 7 DETAIL NO. 7800001				
F.A.U. RTE.	SECTION	COUNTY	TOTAL SHEETS	SHEET NO.
7666	(7,6)RS-3	COLES	11	8
			74A23	
ILLINOIS FED. AID PROJECT				

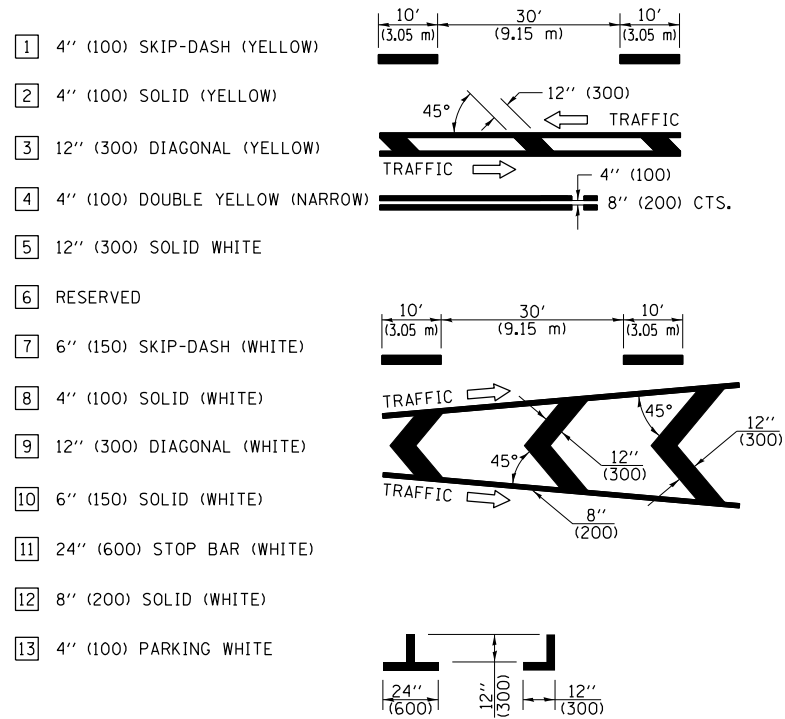
URBAN LEFT TURN



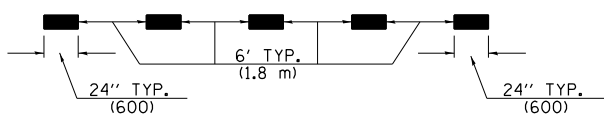
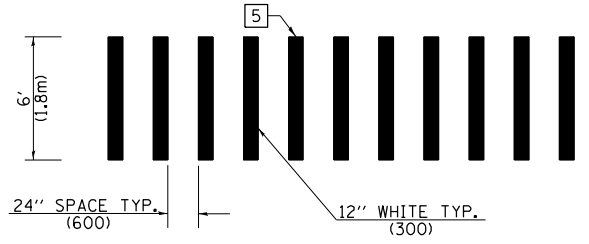
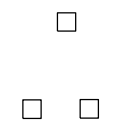
* REDUCE TO 40 FEET (12.2 METERS) SPACING ON CURVES WHERE ADVISORY SPEEDS ARE 10 MPH (15 km/h) LOWER THAN POSTED SPEEDS.

** DOUBLE LANE LINE MARKERS SHALL BE SPECIFIED AND SPACED AS SHOWN IN HIGHWAY STANDARD 781001 FOR MULTI-LANE DIVIDED AND UNDIVIDED HIGHWAYS.

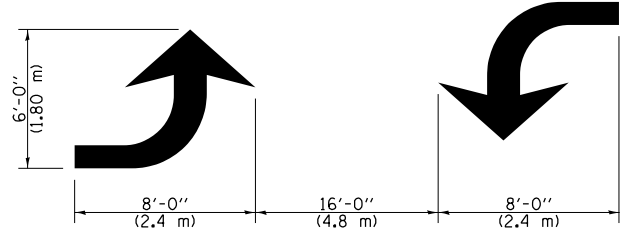
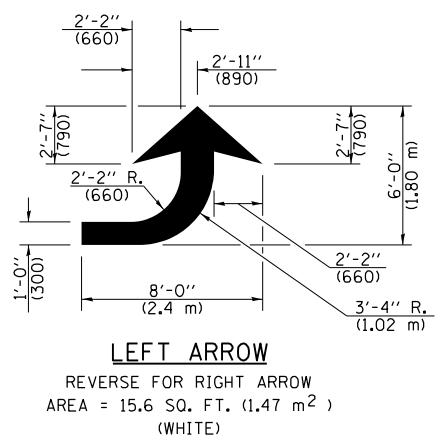
PAVEMENT MARKING LEGEND



GENERAL NOTES



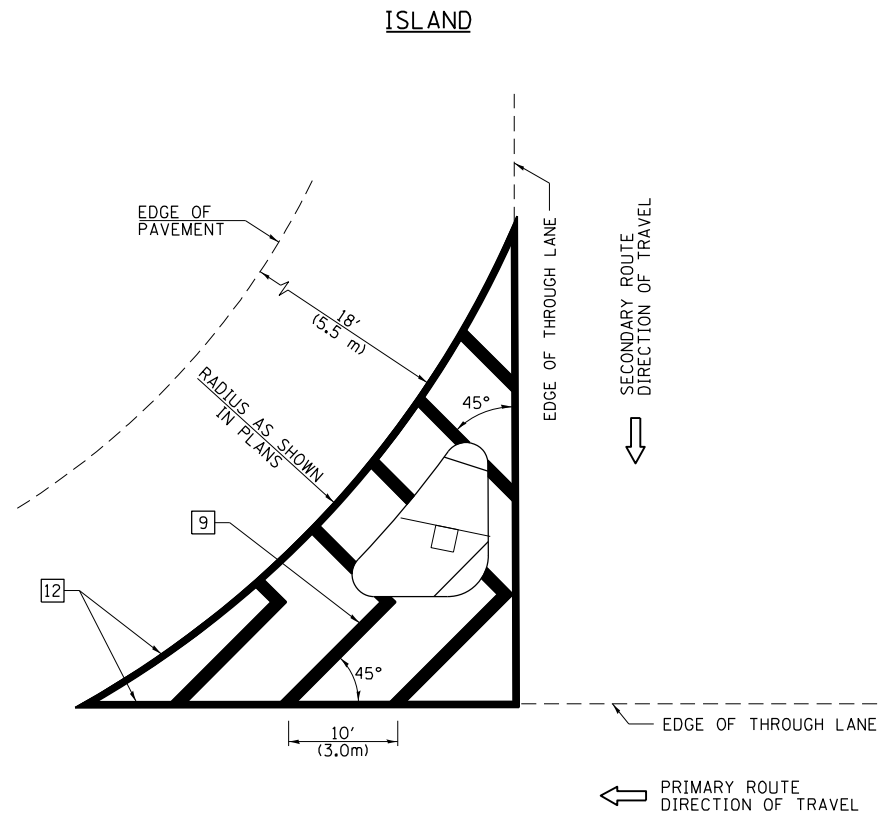
LANE LINE EXTENSIONS



TYPICAL DOUBLE TURN ARROWS (WHITE)

NOT TO SCALE

FILE NAME =	USER NAME = steffenk	DESIGNED -	REVISED -	STATE OF ILLINOIS DEPARTMENT OF TRANSPORTATION	PAVEMENT MARKING AND RAISED REFLECTIVE PAVEMENT MARKERS (RURAL & URBAN APPLICATIONS)	F.A.U. RTE.	SECTION	COUNTY	TOTAL SHEETS	SHEET NO.
pw:\dot-pw\Bentley.com\PWIDOT\Documents\DOT Offices\District 7\Projects\74A23\CADD\Drawings\74A23-sht-details.dgn	DRAWN	REVISIONS	7666			(7,6)RS-3	COLES	11	9	
PLOT SCALE = 100.0000' / in.	CHECKED -	REVISIONS							74A23	
Default	DATE -	REVISIONS							ILLINOIS FED. AID PROJECT	

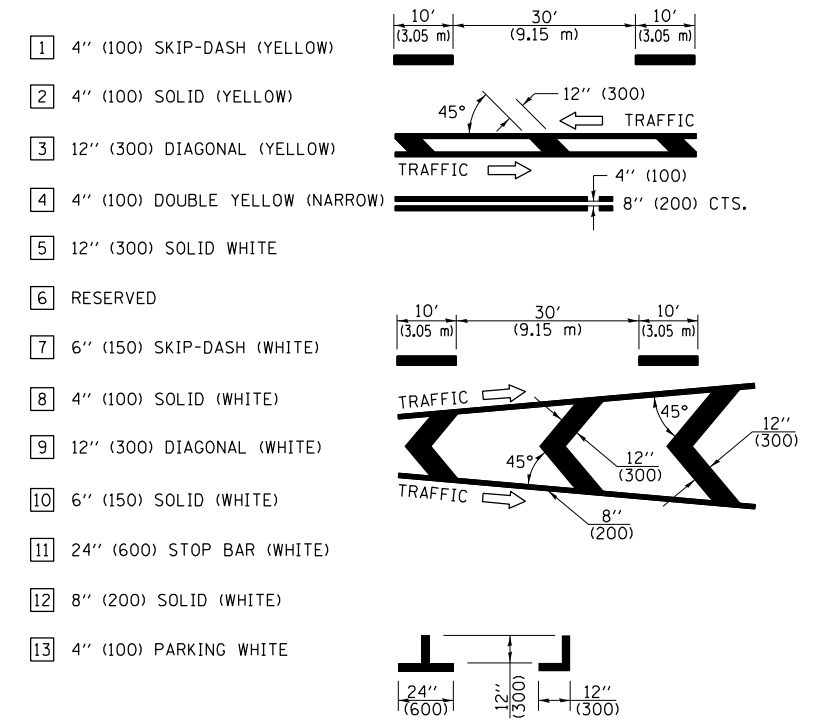


GENERAL NOTES

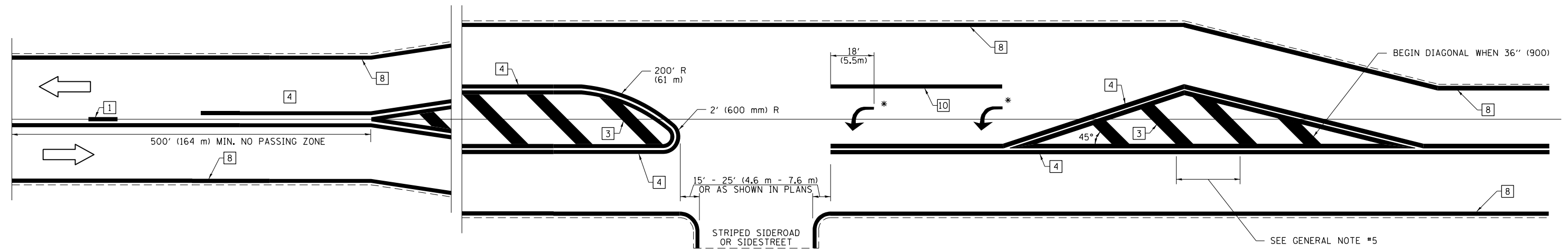
1. RAISED AND CORRUGATED MEDIANS SHALL BE OUTLINED WITH [2] IF PRESENT.
2. SOME OF THE INFORMATION INCLUDED WITH THIS DETAIL MAY NOT BE APPLICABLE TO THIS IMPROVEMENT.
3. PAVEMENT MARKINGS ARE TO BE EXTENDED THROUGH OMISSIONS WHEN APPLICABLE.
4. FINAL PAVEMENT MARKINGS SHALL BE IN PLACE PRIOR TO PLACING ANY RAISED REFLECTIVE PAVEMENT MARKERS.
5. THE FOLLOWING CRITERIA SHALL BE USED FOR SELECTING THE DIAGONAL PAVEMENT MARKING SPACING:

< 30 MPH (< 50 km/h)	15' (4.5 m)
30-45 MPH (50-75 km/h)	20' (6.0 m)
> 45 MPH (> 75 km/h)	30' (9.0 m)

PAVEMENT MARKING LEGEND



RURAL LEFT TURN STRIPING



* PLACE AN ARROW 18' (5.5 m) BACK FROM STOP BAR. PLACE ANOTHER ARROW EVEN WITH THE BEGINNING OF THE SOLID WHITE LINE. SPACE ADDITIONAL ARROWS EVENLY UP TO 80' (24.4 m) MAXIMUM SPACING. USE MINIMUM OF 2 ARROWS.

NOT TO SCALE

FILE NAME =	USER NAME = steffenmk	DESIGNED -	REVISED -
p:\dot-pw\bentley.com\PWIDOT\Documents\IDOT Offices\District 7\Projects\74A23\CADD\Drawings\Drawings\74A23-sht-details.dgn		DRAWN	REVISED -
Default	PLOT SCALE = 100.0000' / in.	CHECKED -	REVISED -
	PLOT DATE = 1/25/2022	DATE -	REVISED -

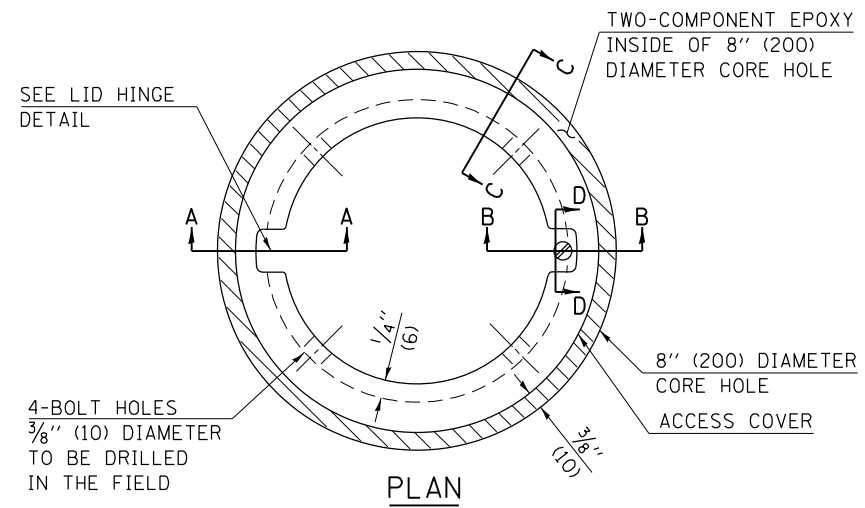
**STATE OF ILLINOIS
DEPARTMENT OF TRANSPORTATION**

**PAVEMENT MARKING AND RAISED REFLECTIVE PAVEMENT MARKERS
(RURAL & URBAN APPLICATIONS)**

SCALE: SHEET OF SHEETS STA. TO STA.

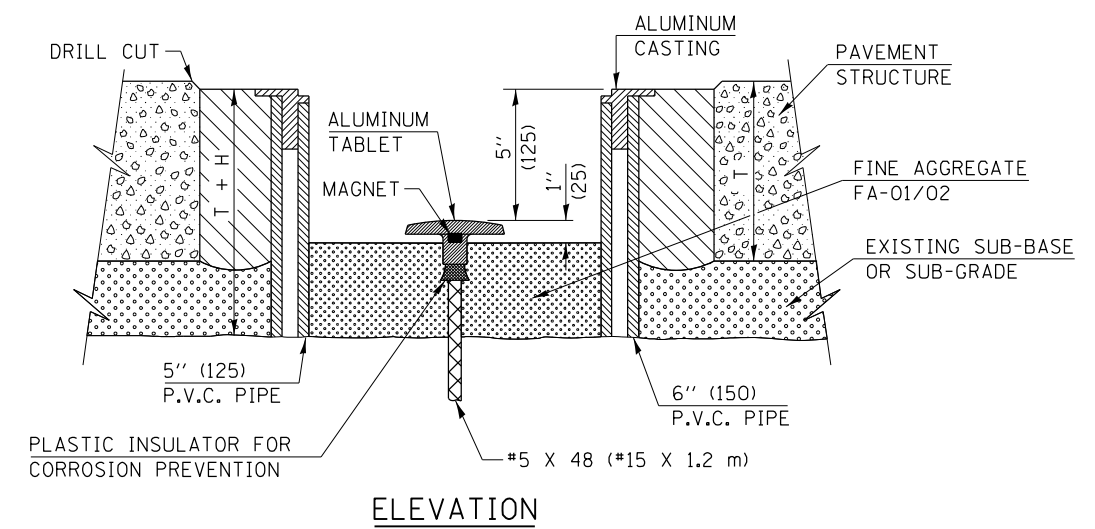
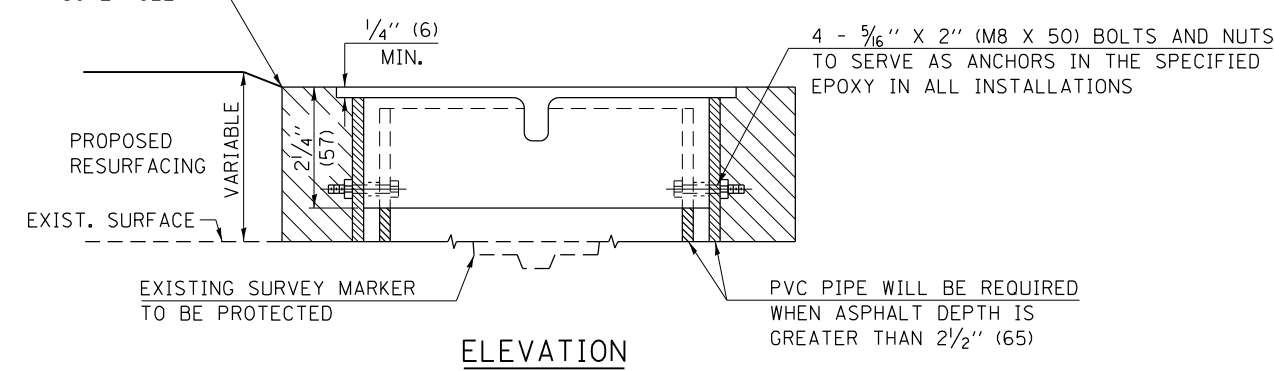
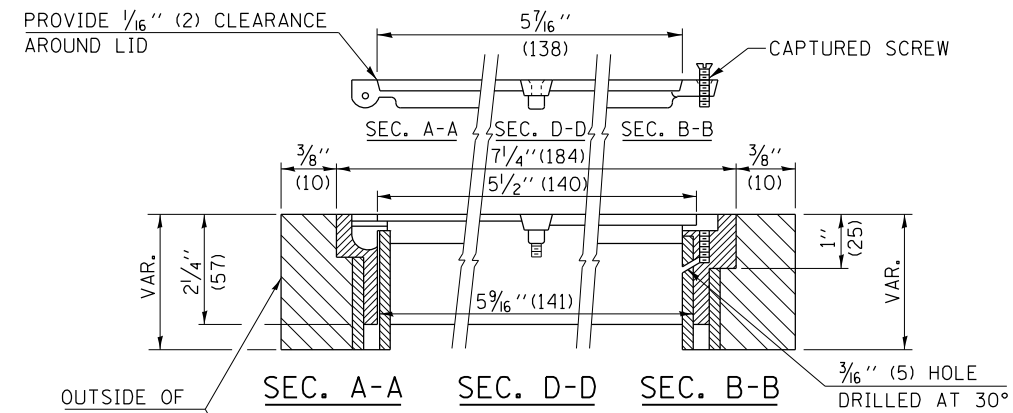
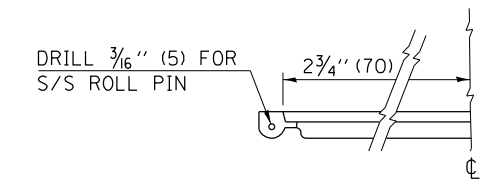
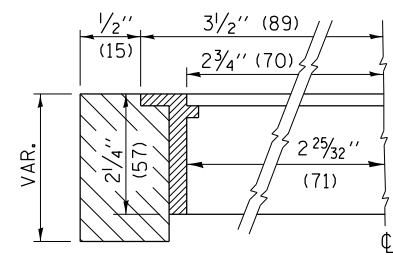
DISTRICT 7 DETAIL NO. 7800001

F.A.U. RTE.	SECTION	COUNTY	TOTAL SHEETS	SHEET NO.
7666	(7,6)RS-3	COLES	11	10
				74A23
ILLINOIS FED. AID PROJECT				



- LEGEND**
- ALUMINUM CASTING
 - 5" (125) OR 6" (150) P.V.C. PIPE
 - TWO-COMPONENT EPOXY
- T = THICKNESS OF PAVEMENT STRUCTURE
- H = THE THICKNESS OF THE SUB-BASE GRANULAR + 1" (25)

BILL OF MATERIAL	
ALUMINUM CASTING OF THE DIMENSIONS AND SPECIFICATIONS SHOWN OR OTHER SUBJECT TO ENGINEER'S APPROVAL OF SHOP DRAWINGS,	
4 EACH - 5/16" X 2" (M8 X 50) BOLTS WITH NUTS, EPOXY,	
5" OR 6" (125 mm OR 150 mm) DIAMETER P.V.C. PIPE, SCHEDULE 40 (WHEN REQUIRED).	



NOT TO SCALE

FILE NAME =	USER NAME = steffennk	DESIGNED -	REVISED -
pw:\idot-pw\bentley.com\PWIDOT\Documents\IDOT Offices\District 7\Projects\74A23\CADD\Drawings\Drawings\74A23-sht-details.dgn		DRAWN	REVISED -
Default	PLOT SCALE = 100.0000' / in.	CHECKED -	REVISED -
	PLOT DATE = 1/25/2022	DATE -	REVISED -

STATE OF ILLINOIS
DEPARTMENT OF TRANSPORTATION

SURVEY MARKER VAULT			
SCALE:	SHEET	OF SHEETS	STA. TO STA.

DISTRICT 7 DETAIL NO. Z0070202				
F.A.U. RTE.	SECTION	COUNTY	TOTAL SHEETS	SHEET NO.
7666	(7,6)RS-3	COLES	11	11
			74A23	
ILLINOIS FED. AID PROJECT				