

STATE OF ILLINOIS
DEPARTMENT OF TRANSPORTATION

FAI RTE.	SECTION	COUNTY	TOTAL SHEETS	SHEET NO.
57	D7 HMA RESURF 2023-1	EFFINGHAM	11	1
		ILLINOIS	CONTRACT NO. 74A75	

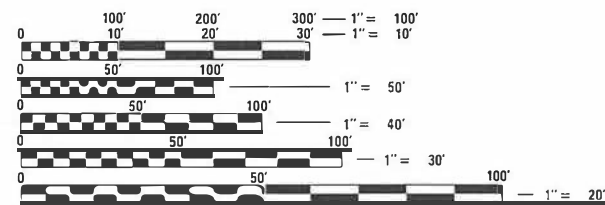
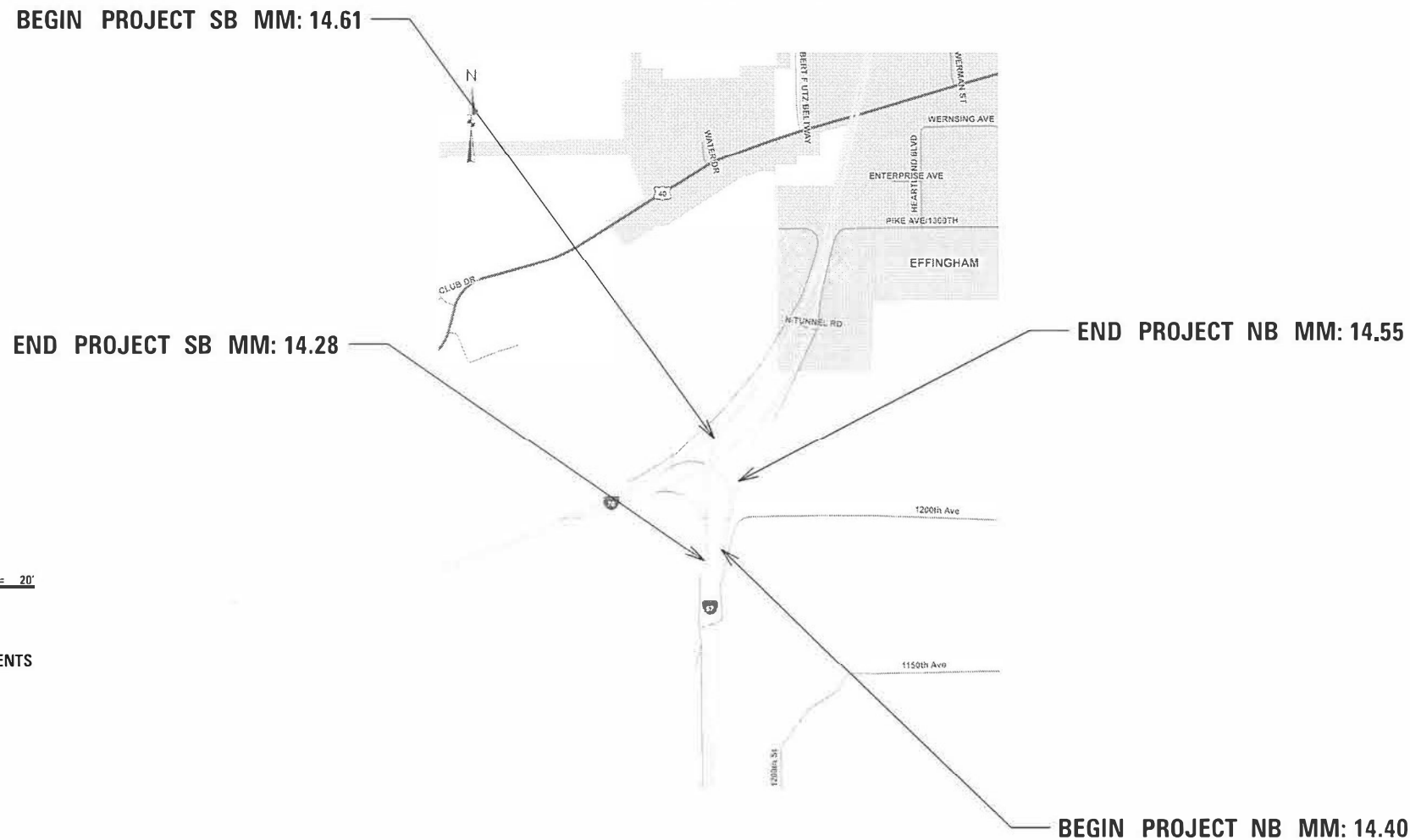
FOR INDEX OF SHEETS, SEE SHEET NO. 2

2019 ADT = 20,100

**PROPOSED
HIGHWAY PLANS**

FAI ROUTE 57 (I-57)
SECTION D7 HMA RESURF 2023-1
PROJECT NHPP-X43Y(271)
SMART RESURFACING
EFFINGHAM COUNTY

C-97-175-21



FULL SIZE PLANS HAVE BEEN PREPARED USING STANDARD ENGINEERING SCALES. REDUCED SIZED PLANS WILL NOT CONFORM TO STANDARD SCALES. IN MAKING MEASUREMENTS ON REDUCED PLANS, THE ABOVE SCALES MAY BE USED.

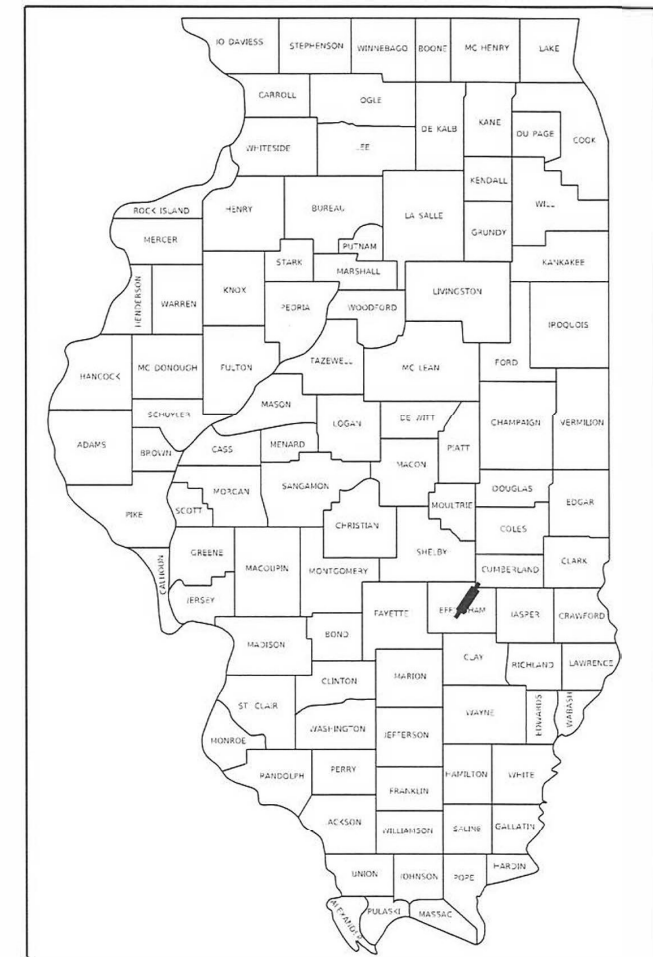
J.U.L.I.E.
JOINT UTILITY LOCATION INFORMATION FOR EXCAVATORS
1-800-892-0123
OR 811

PROJECT ENGINEER: DEBRA BARRETT
PROJECT MANAGER: DREW HEUERMAN

CONTRACT NO. 74A75

GROSS LENGTH = 3,537.6 FT. = 0.67 MILE
NET LENGTH = 3,537.6 FT. = 0.67 MILE

D-97-106-21



LOCATION OF SECTION INDICATED THUS: - [thick black line] -

STATE OF ILLINOIS
DEPARTMENT OF TRANSPORTATION

SUBMITTED FEBRUARY 8 20 22
Jeffrey P. Myers
 REGIONAL ENGINEER

March 25 2022
[Signature]
 ENGINEER OF DESIGN AND ENVIRONMENT

March 25 2022
Stephen M. Smith
 DIRECTOR OF HIGHWAYS PROJECT IMPLEMENTATION

PRINTED BY THE AUTHORITY
OF THE STATE OF ILLINOIS

INDEX OF SHEETS

SHEET NO. ITEM

1	COVER SHEET
2	INDEX, STANDARDS, AND GENERAL NOTES
3	SUMMARY OF QUANTITIES
4-5	TYPICAL CROSS SECTIONS
6-9	SCHEDULE OF QUANTITIES
10-11	PAVEMENT MARKING SHEETS

THE FOLLOWING STANDARDS ARE A PART OF THESE PLANS AND ARE INCLUDED AFTER SHEET NO. 11:

STANDARD NO. DESCRIPTION

000001-08	STANDARD SYMBOLS, ABBREVIATIONS AND PATTERNS
001006	DECIMAL OF AN INCH AND OF A FOOT
442101-09	CLASS B PATCHES
642001-03	SHOULDER RUMBLE STRIPS, 16 IN.
701101-05	OFF-RD OPERATIONS, MULTILANE, 15' (4.5 M) TO 24" (600MM) FROM PAVEMENT EDGE
701106-02	OFF-RD OPERATIONS, MULTILANE, MORE THAN 15' (4.5 M) AWAY
701400-11	APPROACH TO LANE CLOSURE, FREEWAY/EXPRESSWAY
701401-13	LANE CLOSURE, FREEWAY/EXPRESSWAY
701411-09	LANE CLOSURE, MULTILANE, AT ENTRANCE OR EXIT RAMP, FOR SPEEDS MORE THAN 45 MPH
701901-08	TRAFFIC CONTROL DEVICES
780001-05	TYPICAL PAVEMENT MARKINGS
781001-04	TYPICAL APPLICATIONS RAISED REFLECTIVE PAVEMENT MARKERS
420001-10	PAVEMENT JOINTS

GENERAL NOTES

THIS PROJECT IS LOCATED ON FAI ROUTE 57 (I-57) IN EFFINGHAM COUNTY, FROM (NB): S OF I-70 RAMP TO 0.1 MI N; (SB): 0.1 MI S OF I-70 RAMP (SB) TO 0.1 MI N OF I-70 (NB). THE WORK INCLUDED IN SECTION D7 HMA RESURF 2023-1 CONSISTS OF PAVEMENT PATCHING, HOT-MIX ASPHALT SURFACE REMOVAL, (SMART) HOT-MIX ASPHALT RESURFACING, PAVEMENT MARKING, TRAFFIC CONTROL, AND ANY OTHER WORK NECESSARY TO COMPLETE THE SECTION.

THE QUANTITY OF PATCHING SHOWN ON THE PLANS IS AN ESTIMATE. THE FINAL LOCATIONS AND QUANTITY SHALL BE DETERMINED BY THE ENGINEER IN THE FIELD.

MILLED PAVEMENT SHALL BE RESURFACED WITHIN 5 CALENDAR DAYS.

LONGITUDINAL JOINT SEALANT WILL BE APPLIED AT ALL CENTERLINE AND RAMP LANE JOINTS.

WHEN APPLYING SHORT-TERM PAVEMENT MARKINGS, TEMPORARY TAPE SHALL BE USED ON THE SURFACE COURSE AND PAINT SHALL BE USED ON MILLED SURFACES. THE FOLLOWING RATES OF APPLICATION HAVE BEEN USED IN THE CALCULATING PLAN QUANTITIES:

POLYMERIZED HOT-MIX ASPHALT SURFACE COURSE STONE MATRIX ASPHALT, MIX "E", N80: 130 LBS/SQYD/INCH

BITUMINOUS MATERIALS (TACK COAT): 0.05 LBS/SQFT

NOTE: ALL QUANTITIES SOUTH OF NB STATION 5020 + 20, SB STATION 5020 + 20, AND RAMP I-70 E - I-57 S STATION 10+05 SHALL BE PAID FOR AS RURAL, THEREFORE EVERYTHING NORTH OF THOSE STATIONS SHALL BE PAID FOR AS URBAN.

NOTE: "*" IN THE PATCHING SCHEDULE SHALL BE PAID FOR AS RURAL.

THE FOLLOWING MIXTURE REQUIREMENTS ARE APPLICABLE TO THIS PROJECT:

LOCATION(S)	MIXTURE USE(S)	PG	DESIGN AIR VOIDS	MIXTURE COMPOSITION	FRICTION AGGREGATE	MIXTURE WEIGHT	QUALITY MANAGEMENT PROGRAM	SUBLOT SIZE	MATERIAL TRANSFER DEVICE (REQUIRED?)
MAINLINE	POLYMERIZED HOT-MIX ASPHALT SURFACE COURSE, STONE MATRIX ASPHALT, IL-12.5, MIX "E", N80	SBS PG 76-22	4.0% @ N=80	IL - 12.5	MIXTURE E	N80	QCQA	N/A	YES

REV. - MS

MODEL: Default
FILE NAME: p:\public\sw_bentley.com\p\id\dot\documents\dot_office\dist\ct_7\Project\374A75\CADD\374A75-57-GENNOTE.dgn

USER NAME = steffenmk	DESIGNED -	REVISED -	STATE OF ILLINOIS DEPARTMENT OF TRANSPORTATION	GENERAL NOTES AND INDEX OF SHEETS		F.A.I. RTE.	SECTION	COUNTY	TOTAL SHEETS	SHEET NO.
PLOT SCALE = 100.0000' / in.	DRAWN -	REVISED -				57	D7 HMA RESURF 2023-1	EFFINGHAM	11	2
PLOT DATE = 2/9/2022	CHECKED -	REVISED -		SCALE: SHEET 2 OF 25 SHEETS STA. TO STA.		CONTRACT NO. 74A75				
	DATE -	REVISED -		ILLINOIS FED. AID PROJECT						

90% FED
10% STATE

90% FED
10% STATE

SUMMARY OF QUANTITIES			TOTAL QUANTITIES	CONSTRUCTION TYPE CODE		
CODE NO	ITEM	UNIT		0005 RURAL	0005 URBAN	
40600290	BITUMINOUS MATERIALS (TACK COAT)	POUND	8731	3830	4901	
40600370	LONGITUDINAL JOINT SEALANT	FOOT	4422	2325	2097	
40600990	TEMPORARY RAMP	SQ YD	130	37	93	
40605034	POLYMERIZED HOT-MIX ASPHALT SURFACE COURSE, STONE MATRIX ASPHALT, 12.5, MIX "E", N80	TON	2522	1106	1416	
44000157	HOT-MIX ASPHALT SURFACE REMOVAL, 2"	SQ YD	19401	8510	10891	
44201043	CLASS B PATCHES, TYPE II, 16 INCH	SQ YD	823	430	393	
44201299	DOWEL BARS 1 1/2"	EACH	1888	1012	876	
44213200	SAW CUTS	FOOT	4578	2440	2138	
64200116	SHOULDER RUMBLE STRIPS, 16 INCH	FOOT	9058	3356	5702	
67100100	MOBILIZATION	L SUM	1	0.32	0.68	
70100420	TRAFFIC CONTROL AND PROTECTION, STANDARD 701411	EACH	2		2	
70100800	TRAFFIC CONTROL AND PROTECTION, STANDARD 701401	L SUM	1	0.32	0.68	
70103815	TRAFFIC CONTROL SURVEILLANCE	CAL DA	10	5	5	

SUMMARY OF QUANTITIES			TOTAL QUANTITIES	CONSTRUCTION TYPE CODE		
CODE NO	ITEM	UNIT		0005 RURAL	0005 URBAN	
70107025	CHANGEABLE MESSAGE SIGN	CAL DA	28	14	14	
70300100	SHORT TERM PAVEMENT MARKING	FOOT	852	392	460	
70300150	SHORT TERM PAVEMENT MARKING REMOVAL	SQ FT	281	129	152	
* 78000400	THERMOPLASTIC PAVEMENT MARKING - LINE 6"	FOOT	9058	3356	5702	
* 78000500	THERMOPLASTIC PAVEMENT MARKING - LINE 8"	FOOT	1162	777	385	
* 78000600	THERMOPLASTIC PAVEMENT MARKING - LINE 12"	FOOT	77		77	
* 78004230	PREFORMED PLASTIC PAVEMENT MARKING, TYPE B - INLAID - LINE 6"	FOOT	820	350	470	
* 78011035	GROOVING FOR RECESSED PAVEMENT MARKING 7"	FOOT	9058	3356	5702	
* 78011045	GROOVING FOR RECESSED PAVEMENT MARKING 9"	FOOT	1162	777	385	
* 78011065	GROOVING FOR RECESSED PAVEMENT MARKING 13"	FOOT	77		77	
* 78100100	RAISED REFLECTIVE PAVEMENT MARKER	EACH	112	46	66	
78300200	RAISED REFLECTIVE PAVEMENT MARKER REMOVAL	EACH	112	46	66	
Z0034105	MATERIAL TRANSFER DEVICE	TON	2522	1106	1416	

* SPECIALTY ITEM

REV. - MS

MODEL: Default
 FILE: M:\MS_E_P\11102022\aw_bentley.com\FWIDOT\Documents\DOT_Offices\Dir\ctc_7\Projects\74A75\CADD\DATA\CAD\Sheet\DOT74A75-11-500.dgn

USER NAME = steffemk	DESIGNED -	REVISED -
	DRAWN -	REVISED -
PLOT SCALE = 100.0000' / in.	CHECKED -	REVISED -
PLOT DATE = 2/9/2022	DATE -	REVISED -

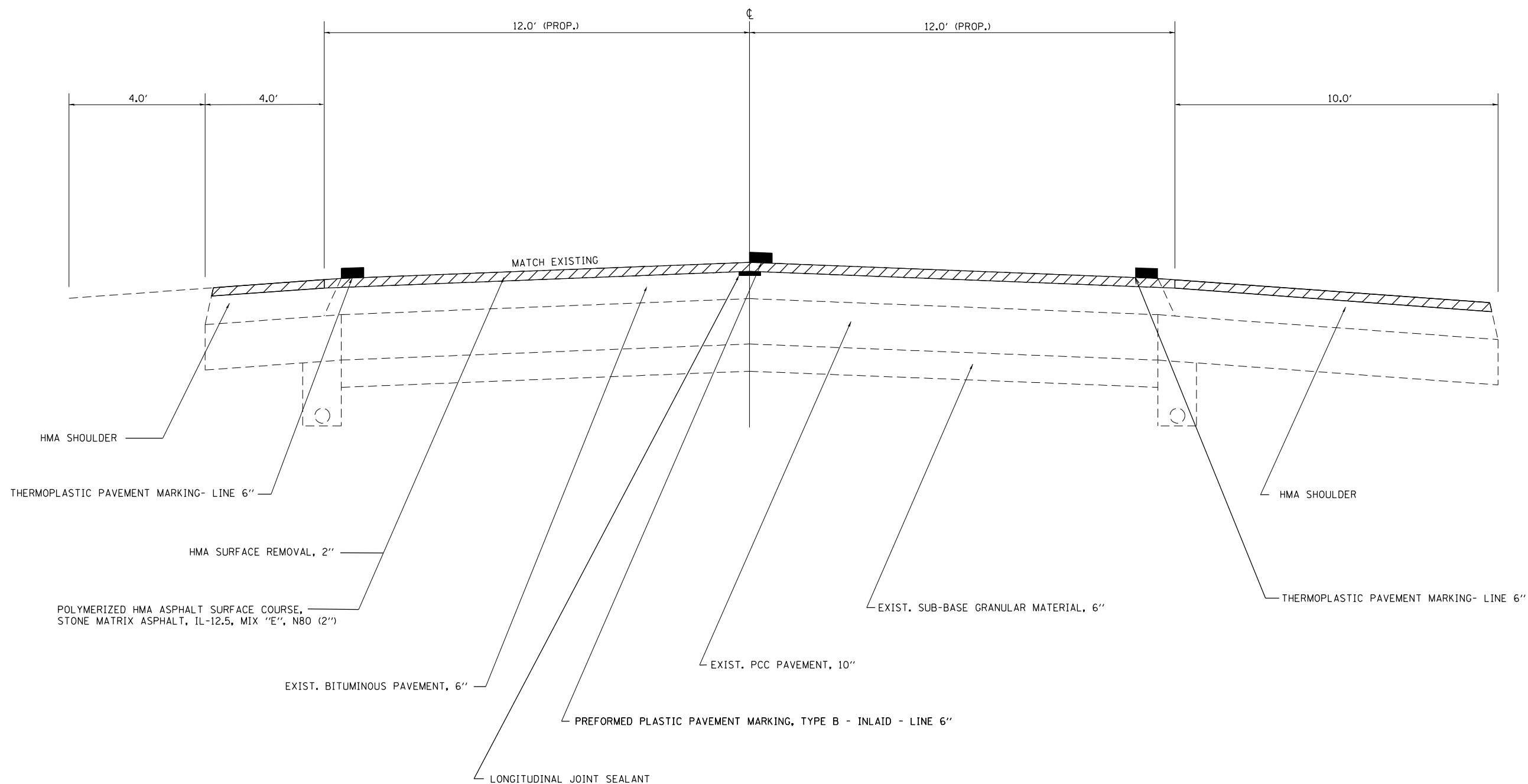
STATE OF ILLINOIS
DEPARTMENT OF TRANSPORTATION

SUMMARY OF QUANTITIES

SCALE: SHEET OF SHEETS STA. TO STA.

F.A.I. RTE.	SECTION	COUNTY	TOTAL SHEETS	SHEET NO.
57	D7 HMA RESURF 2023-1	EFFINGHAM	11	3
CONTRACT NO. 74A75			ILLINOIS FED. AID PROJECT	

TYPICAL CROSS SECTION



MODEL: Default
 FILE NAME: p:\ultra-cw-bead\p\com\PIV\DOT\Documents\DOT Office\Director_7\Project\74A75\CADD\DATA\CAD\Sheet\74A75-sh1-cs1.dgn

USER NAME = steffenmk	DESIGNED -	REVISED -
	DRAWN -	REVISED -
PLOT SCALE = 100,0000 ' / in.	CHECKED -	REVISED -
PLOT DATE = 2/9/2022	DATE -	REVISED -

**STATE OF ILLINOIS
DEPARTMENT OF TRANSPORTATION**

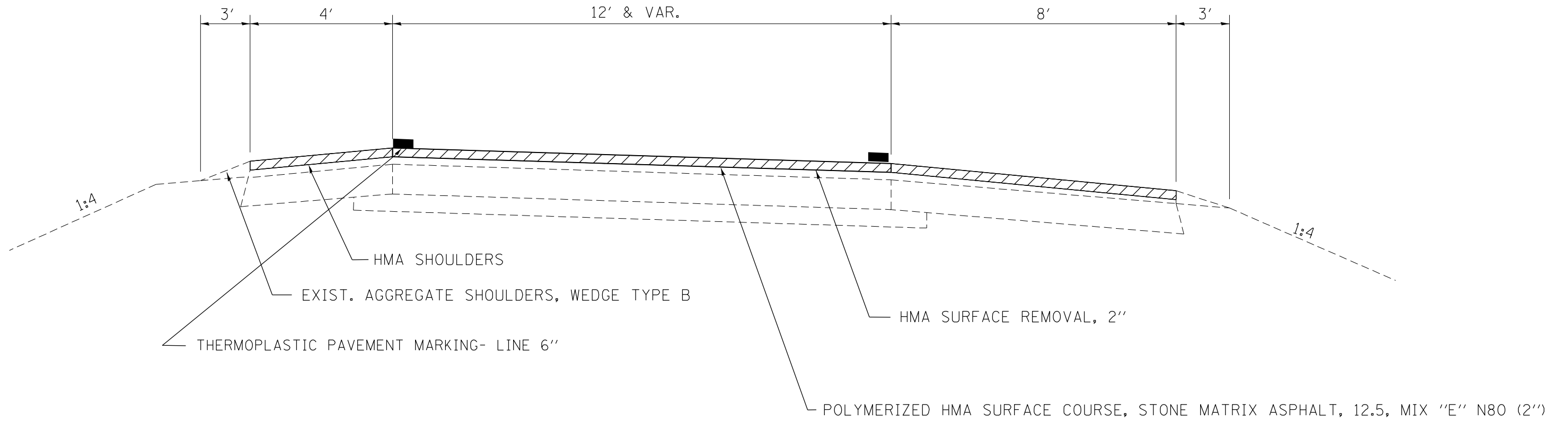
TYPICAL CROSS SECTION

SCALE: SHEET OF SHEETS STA. TO STA.

F.A.I. RTE.	SECTION	COUNTY	TOTAL SHEETS	SHEET NO.
57	D7 HMA RESURF 2023-1	EFFINGHAM	11	4
CONTRACT NO. 74A75				
ILLINOIS FED. AID PROJECT				

PROPOSED TYPICAL SECTION

RAMPS A & B



NOTE: NOT TO SCALE

MODEL: Default
FILE: \\mfrs-pw-beadley.com\P\DOT\Documents\DOT Offices\District 7\Projects\74A75\CADD\DATA\CAD\Sheet\74A75-sh1-tyr-cs1.dgn

USER NAME = steffenmk	DESIGNED -	REVISED -
	DRAWN -	REVISED -
PLOT SCALE = 100,0000' / in.	CHECKED -	REVISED -
PLOT DATE = 2/9/2022	DATE -	REVISED -

**STATE OF ILLINOIS
DEPARTMENT OF TRANSPORTATION**

TYPICAL CROSS SECTION			
SCALE:	SHEET	OF SHEETS	STA. TO STA.

F.A.I. RTE.	SECTION	COUNTY	TOTAL SHEETS	SHEET NO.
57	D7 HMA RESURF 2023-1	EFFINGHAM	11	5
CONTRACT NO. 74A75				
ILLINOIS FED. AID PROJECT				

STATION	DIRECTION	LANE	LENGTH	WIDTH	PATCH AREA				DOWEL BARS 44201299 (each)	SAW CUTS 44213200 (ft)
					TYPE I 16.0" (sq. yd)	TYPE II 16.0" (sq. yd)	TYPE III 16.0" (sq. yd)	TYPE IV 16.0" (sq. yd)		
1-57 NB					0.0	0.0	0.0	0.0	0	0.0
* 5016+21.00	NB	DRIVING	6	12	0.0	8.0	0.0	0.0	20	48.0
* 5016+21.00	NB	PASSING	6	12	0.0	8.0	0.0	0.0	20	48.0
* 5017+20.00	NB	DRIVING	6	12	0.0	8.0	0.0	0.0	20	48.0
* 5017+20.00	NB	PASSING	6	12	0.0	8.0	0.0	0.0	20	48.0
* 5018+18.00	NB	DRIVING	6	12	0.0	8.0	0.0	0.0	20	48.0
* 5018+18.00	NB	PASSING	6	12	0.0	8.0	0.0	0.0	20	48.0
* 5018+71.00	NB	DRIVING	6	12	0.0	8.0	0.0	0.0	20	48.0
* 5019+12.00	NB	PASSING	6	12	0.0	8.0	0.0	0.0	20	48.0
* 5020+05.00	NB	DRIVING	6	12	0.0	8.0	0.0	0.0	20	48.0
* 5020+05.00	NB	PASSING	6	12	0.0	8.0	0.0	0.0	20	48.0
5021+08.00	NB	DRIVING	6	12	0.0	8.0	0.0	0.0	20	48.0
5021+08.00	NB	PASSING	6	12	0.0	8.0	0.0	0.0	20	48.0
5023+03.00	NB	DRIVING	6	12	0.0	8.0	0.0	0.0	20	48.0
5023+03.00	NB	PASSING	6	12	0.0	8.0	0.0	0.0	20	48.0
5024+01.00	NB	DRIVING	6	12	0.0	8.0	0.0	0.0	20	48.0
5024+01.00	NB	PASSING	6	12	0.0	8.0	0.0	0.0	20	48.0
5025+10.00	NB	DRIVING	10	12	0.0	13.3	0.0	0.0	20	56.0
5025+10.00	NB	PASSING	8	12	0.0	10.7	0.0	0.0	20	52.0
					0.0	0.0	0.0	0.0	0	0.0
1-57 SB	NORTH OF BRIDGE	OVER I-70 EB			0.0	0.0	0.0	0.0	0	0.0
33+16.00	SB	DRIVING	8	12	0.0	10.7	0.0	0.0	20	52.0
33+16.00	SB	PASSING	8	12	0.0	10.7	0.0	0.0	20	52.0
34+28.00	SB	DRIVING	6	12	0.0	8.0	0.0	0.0	20	48.0
34+28.00	SB	PASSING	6	12	0.0	8.0	0.0	0.0	20	48.0
35+71.00	SB	DRIVING	6	12	0.0	8.0	0.0	0.0	20	48.0
35+71.00	SB	PASSING	10	12	0.0	13.3	0.0	0.0	20	56.0
36+15.00	SB	DRIVING	6	12	0.0	8.0	0.0	0.0	20	48.0
					0.0	218.7	0.0	0.0	500.0	1228.0
					(sq. yd)	(sq. yd)	(sq. yd)	(sq. yd)	(each)	(ft)
			SUB TOTALS							

MODEL: Default
 FILE: \\malfp-pw-bentley.com\PW\DOT\Documents\DOT\Office\Director_7\Project\74A75\CADD\DATA\CAD\Sheet\74A75-she-schedule.cad

USER NAME = steffenmk	DESIGNED -	REVISED -
	DRAWN -	REVISED -
PLOT SCALE = 100,0000' / in.	CHECKED -	REVISED -
PLOT DATE = 2/9/2022	DATE -	REVISED -

**STATE OF ILLINOIS
DEPARTMENT OF TRANSPORTATION**

SCHEDULE OF QUANTITIES

SCALE: SHEET OF SHEETS STA. TO STA.

F.A.I. RTE.	SECTION	COUNTY	TOTAL SHEETS	SHEET NO.
57	D7 HMA RESURF 2023-1	EFFINGHAM	11	6
CONTRACT NO. 74A75			ILLINOIS FED. AID PROJECT	

STATION	DIRECTION	LANE	LENGTH	WIDTH	PATCH AREA				DOWEL BARS 44201299 (each)	SAW CUTS 44213200 (ft)
					TYPE I 16.0" (sq. yd)	TYPE II 16.0" (sq. yd)	TYPE III 16.0" (sq. yd)	TYPE IV 16.0" (sq. yd)		
36+15.00	SB	PASSING	6	12	0.0	8.0	0.0	0.0	20	48.0
STATION	EQUATION 36+20=	5030+72			0.0	0.0	0.0	0.0	0	0.0
I-57 SB	SOUTH OF BRIDGE	OVER I-70 EB			0.0	0.0	0.0	0.0	0	0.0
* 5009+70.00	SB	DRIVING	6	12	0.0	8.0	0.0	0.0	20	48.0
* 5009+70.00	SB	PASSING	6	12	0.0	8.0	0.0	0.0	20	48.0
* 5010+44.00	SB	DRIVING	6	12	0.0	8.0	0.0	0.0	20	48.0
* 5010+44.00	SB	PASSING	6	12	0.0	8.0	0.0	0.0	20	48.0
* 5011+07.00	SB	DRIVING	6	12	0.0	8.0	0.0	0.0	20	48.0
* 5011+07.00	SB	PASSING	6	12	0.0	8.0	0.0	0.0	20	48.0
* 5012+42.00	SB	DRIVING	6	12	0.0	8.0	0.0	0.0	20	48.0
* 5012+42.00	SB	PASSING	6	12	0.0	8.0	0.0	0.0	20	48.0
* 5013+05.00	SB	DRIVING	6	12	0.0	8.0	0.0	0.0	20	48.0
* 5013+05.00	SB	PASSING	6	12	0.0	8.0	0.0	0.0	20	48.0
* 5013+60.00	SB	DRIVING	6	12	0.0	8.0	0.0	0.0	20	48.0
* 5013+60.00	SB	PASSING	6	12	0.0	8.0	0.0	0.0	20	48.0
* 5014+00.00	SB	DRIVING	6	12	0.0	8.0	0.0	0.0	20	48.0
* 5014+00.00	SB	PASSING	6	12	0.0	8.0	0.0	0.0	20	48.0
* 5014+68.00	SB	DRIVING	6	12	0.0	8.0	0.0	0.0	20	48.0
* 5014+68.00	SB	PASSING	6	12	0.0	8.0	0.0	0.0	20	48.0
* 5015+00.00	SB	DRIVING	6	12	0.0	8.0	0.0	0.0	20	48.0
* 5015+00.00	SB	PASSING	6	12	0.0	8.0	0.0	0.0	20	48.0
* 5015+50.00	SB	DRIVING	8	12	0.0	10.7	0.0	0.0	20	52.0
* 5015+50.00	SB	PASSING	10	12	0.0	13.3	0.0	0.0	20	56.0
* 5016+50.00	SB	DRIVING	8	12	0.0	10.7	0.0	0.0	20	52.0
* 5016+50.00	SB	PASSING	7	12	0.0	9.3	0.0	0.0	20	50.0
* 5017+72.00	SB	DRIVING	7	12	0.0	9.3	0.0	0.0	20	50.0
* 5017+72.00	SB	PASSING	7	12	0.0	9.3	0.0	0.0	20	50.0
* 5018+50.00	SB	DRIVING	8	12	0.0	10.7	0.0	0.0	20	52.0
* 5018+50.00	SB	PASSING	8	12	0.0	10.7	0.0	0.0	20	52.0
* 5018+90.00	SB	DRIVING	6	12	0.0	8.0	0.0	0.0	20	48.0
SUB TOTALS					0.0 (sq. yd)	244.0 (sq. yd)	0.0 (sq. yd)	0.0 (sq. yd)	560.0 (each)	1374.0 (ft)

MODEL: Default
 FILE: \\malfp-pw-bentley.com\P\DOT\Documents\DOT Office\Director\7\Project\74A75\CADD\DATA\CAD\Sheet\74A75-SubSchedule.cad

USER NAME = steffenmk	DESIGNED -	REVISED -
	DRAWN -	REVISED -
PLOT SCALE = 100,0000' / in.	CHECKED -	REVISED -
PLOT DATE = 2/9/2022	DATE -	REVISED -

**STATE OF ILLINOIS
DEPARTMENT OF TRANSPORTATION**

SCHEDULE OF QUANTITIES			
SCALE:	SHEET	OF	SHEETS
	STA.	TO	STA.

F.A.I. RTE.	SECTION	COUNTY	TOTAL SHEETS	SHEET NO.
57	D7 HMA RESURF 2023-1	EFFINGHAM	11	7
CONTRACT NO. 74A75				
ILLINOIS FED. AID PROJECT				

STATION	DIRECTION	LANE	LENGTH (ft)	WIDTH (ft)	PATCH AREA				DOWEL BARS 44201299 (each)	SAW CUTS 44213200 (ft)
					TYPE I 16.0'' (sq. yd)	TYPE II 16.0'' (sq. yd)	TYPE III 16.0'' (sq. yd)	TYPE IV 16.0'' (sq. yd)		
* 5018+90.00	SB	PASSING	6	12	0.0	8.0	0.0	0.0	20	48.0
* 5019+50.00	SB	DRIVING	8	12	0.0	10.7	0.0	0.0	20	52.0
* 5019+50.00	SB	PASSING	8	12	0.0	10.7	0.0	0.0	20	52.0
5020+50.00	SB	DRIVING	8	12	0.0	10.7	0.0	0.0	20	52.0
5020+50.00	SB	PASSING	8	12	0.0	10.7	0.0	0.0	20	52.0
5021+50.00	SB	DRIVING	6	12	0.0	8.0	0.0	0.0	20	48.0
5021+50.00	SB	PASSING	6	12	0.0	8.0	0.0	0.0	20	48.0
5022+50.00	SB	DRIVING	6	12	0.0	8.0	0.0	0.0	20	48.0
5022+50.00	SB	PASSING	6	12	0.0	8.0	0.0	0.0	20	48.0
5023+00.00	SB	DRIVING	10	12	0.0	13.3	0.0	0.0	20	56.0
5023+00.00	SB	PASSING	6	12	0.0	8.0	0.0	0.0	20	48.0
5023+50.00	SB	DRIVING	6	12	0.0	8.0	0.0	0.0	20	48.0
5023+50.00	SB	PASSING	6	12	0.0	8.0	0.0	0.0	20	48.0
5024+50.00	SB	DRIVING	6	12	0.0	8.0	0.0	0.0	20	48.0
5024+50.00	SB	PASSING	6	12	0.0	8.0	0.0	0.0	20	48.0
5025+50.00	SB	DRIVING	8	12	0.0	10.7	0.0	0.0	20	52.0
5025+50.00	SB	PASSING	8	12	0.0	10.7	0.0	0.0	20	52.0
5026+50.00	SB	DRIVING	6	12	0.0	8.0	0.0	0.0	20	48.0
5026+50.00	SB	PASSING	6	12	0.0	8.0	0.0	0.0	20	48.0
5027+50.00	SB	DRIVING	10	12	0.0	13.3	0.0	0.0	20	56.0
5027+50.00	SB	PASSING	10	12	0.0	13.3	0.0	0.0	20	56.0
					0.0	0.0	0.0	0.0	0	0.0
1-57 NB RAMP	TO I-70 WB				0.0	0.0	0.0	0.0	0	0.0
8+66.00		DRIVING	6	14	0.0	9.3	0.0	0.0	24	54.0
9+24.00		DRIVING	6	14	0.0	9.3	0.0	0.0	24	54.0
9+82.00		DRIVING	6	14	0.0	9.3	0.0	0.0	24	54.0
11+15.00		DRIVING	6	14	0.0	9.3	0.0	0.0	24	54.0
12+87.00		DRIVING	6	14	0.0	9.3	0.0	0.0	24	54.0
13+63.00		DRIVING	6	14	0.0	9.3	0.0	0.0	24	54.0
17+00.00		DRIVING	6	14	0.0	9.3	0.0	0.0	24	54.0
SUB TOTALS					0.0 (sq. yd)	265.3 (sq. yd)	0.0 (sq. yd)	0.0 (sq. yd)	588.0 (each)	1434.0 (ft)

MODEL: Default
 FILE: \\m1151-pw-bentley.com\P1\DOT\Documents\DOT\Office\Director_7\Project\74A75\CADD\DATA\CAD\Sheet\74A75-PS-Schedule.qxd

USER NAME = steffenmk	DESIGNED -	REVISED -
	DRAWN -	REVISED -
PLOT SCALE = 100,0000' / in.	CHECKED -	REVISED -
PLOT DATE = 2/9/2022	DATE -	REVISED -

STATE OF ILLINOIS
DEPARTMENT OF TRANSPORTATION

SCHEDULE OF QUANTITIES			
SCALE:	SHEET	OF	SHEETS
	STA.	TO	STA.

F.A.I. RTE.	SECTION	COUNTY	TOTAL SHEETS	SHEET NO.
57	D7 HMA RESURF 2023-1	EFFINGHAM	11	8
CONTRACT NO. 74A75				
		ILLINOIS	FED. AID PROJECT	

STATION	DIRECTION	LANE	LENGTH (ft)	WIDTH (ft)	PATCH AREA				DOWEL BARS 44201299 (each)	SAW CUTS 44213200 (ft)
					TYPE I 16.0" (sq. yd)	TYPE II 16.0" (sq. yd)	TYPE III 16.0" (sq. yd)	TYPE IV 16.0" (sq. yd)		
I-70 EB RAMP	TO I-57 SB				0.0	0.0	0.0	0.0	0	0.0
7+12.00		DRIVING	6	14	0.0	9.3	0.0	0.0	24	54.0
8+04.00		DRIVING	6	14	0.0	9.3	0.0	0.0	24	54.0
* 10+12.00		DRIVING	6	14	0.0	9.3	0.0	0.0	24	54.0
* 11+07.00		DRIVING	7	14	0.0	10.9	0.0	0.0	24	56.0
* 13+00.00		DRIVING	6	14	0.0	9.3	0.0	0.0	24	54.0
* 13+68.00		DRIVING	6	14	0.0	9.3	0.0	0.0	24	54.0
* 14+02.00		DRIVING	6	14	0.0	9.3	0.0	0.0	24	54.0
* 15+25.00		DRIVING	6	14	0.0	9.3	0.0	0.0	24	54.0
* 16+02.00		DRIVING	6	14	0.0	9.3	0.0	0.0	24	54.0
* 17+20.00		DRIVING	6	14	0.0	9.3	0.0	0.0	24	54.0
SUB TOTALS					0.0 (sq. yd)	94.9 (sq. yd)	0.0 (sq. yd)	0.0 (sq. yd)	240.0 (each)	542.0 (ft)
					PATCH AREA				DOWEL BARS 44201299 (each)	SAW CUTS 44213200 (ft)
					TYPE I 16.0" (sq. yd)	TYPE II 16.0" (sq. yd)	TYPE III 16.0" (sq. yd)	TYPE IV 16.0" (sq. yd)		
TOTALS					0.0 (sq. yd)	822.9 (sq. yd)	0.0 (sq. yd)	0.0 (sq. yd)	1888.0 (each)	4578.0 (ft)

PAVING SCHEDULE		BITUMINOUS MATERIALS (TACK COAT)	HMA SURFACE REMOVAL, 2"	TEMPORARY RAMP	POLYMERIZED HMA SURFACE COURSE, STONE MATRIX ASPHALT, 12.5, MIX "E" "N80"
MILE POST TO MILE POST		POUND	SQ YD	SQ YD	TON
NORTHBOUND					
14.40	TO 14.55	1926.0	4280.0	37.0	556.0
NORTHBOUND RAMP TO I-70 WEST					
0	TO JOINT	1263.0	2806.0	9.0	365.0
NORTHBOUND TOTALS:		3189	7086	46	921
SOUTHBOUND					
14.28	TO 14.61	4161.0	9247.0	75.0	1202.0
SOUTHBOUND RAMP FROM I-70 EAST TO I-57 SOUTH					
JOINT	TO 0.34	1381.0	3068.0	9.0	399.0
SOUTHBOUND TOTALS:		5542	12315	84	1601
TOTALS:		8731	19401	130	2522

PAVEMENT MARKING SCHEDULE		SHORT TERM PAVEMENT MARKING	SHORT TERM PAVEMENT MARKING REMOVAL	THERMOPLASTIC PAVEMENT MARKING - LINE 6"	THERMOPLASTIC PAVEMENT MARKING - LINE 8"	THERMOPLASTIC PAVEMENT MARKING - LINE 12"	PREFORMED PLASTIC PAVEMENT MARKING, TYPE B - INLAID - LINE 6"	RAISED REFLECTIVE PAVEMENT MARKER	RAISED REFLECTIVE PAVEMENT MARKER REMOVAL	SHOULDER RUMBLE STRIPS, 16 INCH
MILE POST TO MILE POST		FOOT	SQ FT	FOOT	FOOT	FOOT	FOOT	EACH	EACH	FOOT
NORTHBOUND I-57										
14.40	TO 14.55	133.0	44.0	2026.0	0.0	0.0	260.0	24.0	24.0	2026
NORTHBOUND RAMP TO I-70 WEST										
0	TO JOINT	0.0	0.0	1432.0	374.0	77.0	0.0	30.0	30.0	1432
NORTHBOUND TOTALS:		133	44	3458	374	77	260	54	54	3458
SOUTHBOUND I-57										
14.28	TO JOINT	45.0	15.0	698.0	0.0	0.0	80.0	10.0	10.0	698
SOUTHBOUND I-57 BRIDGE JOINT TO END PROJECT										
JOINT	TO 14.61	248.0	82.0	3778.0	0.0	0.0	480.0	48.0	48.0	3778
SOUTHBOUND RAMP FROM I-70 EAST TO I-57 SOUTH										
JOINT	TO 0.34	0.0	0.0	1124.0	788.0	0.0	0.0	0.0	0.0	1124
SOUTHBOUND TOTALS:		293	97	5600	788	0	560	58	58	5600
TOTALS		426	141			77				
TWO LAYERS		X2								
TOTALS:		852	281	9058	1162	77	820	112	112	9058

"*" RURAL FUND CODE

MODEL: Default
FILE: \\bluest-pw-beadley.com\FW\DOT\Documents\DOT\Office\Dir\dr: 7\Project\74675\CADD\DATA\CAD\Sheet\DOT\74675-PB-Schedule.dwg

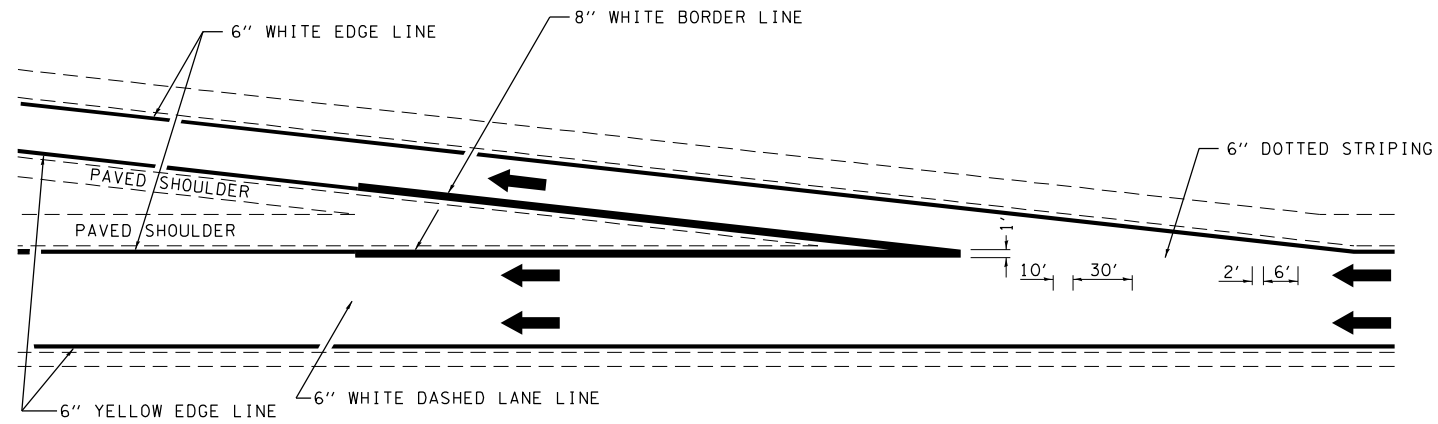
USER NAME = stefnmk	DESIGNED -	REVISED -
	DRAWN -	REVISED -
PLOT SCALE = 100,0000 ' / in.	CHECKED -	REVISED -
PLOT DATE = 2/9/2022	DATE -	REVISED -

STATE OF ILLINOIS
DEPARTMENT OF TRANSPORTATION

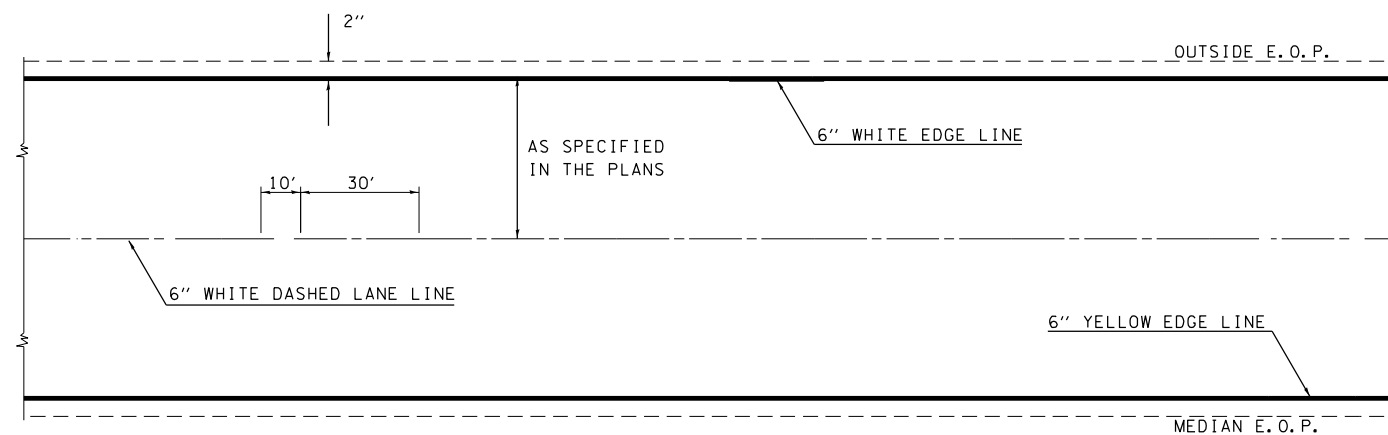
SCHEDULE OF QUANTITIES

SCALE: SHEET OF SHEETS STA. TO STA.

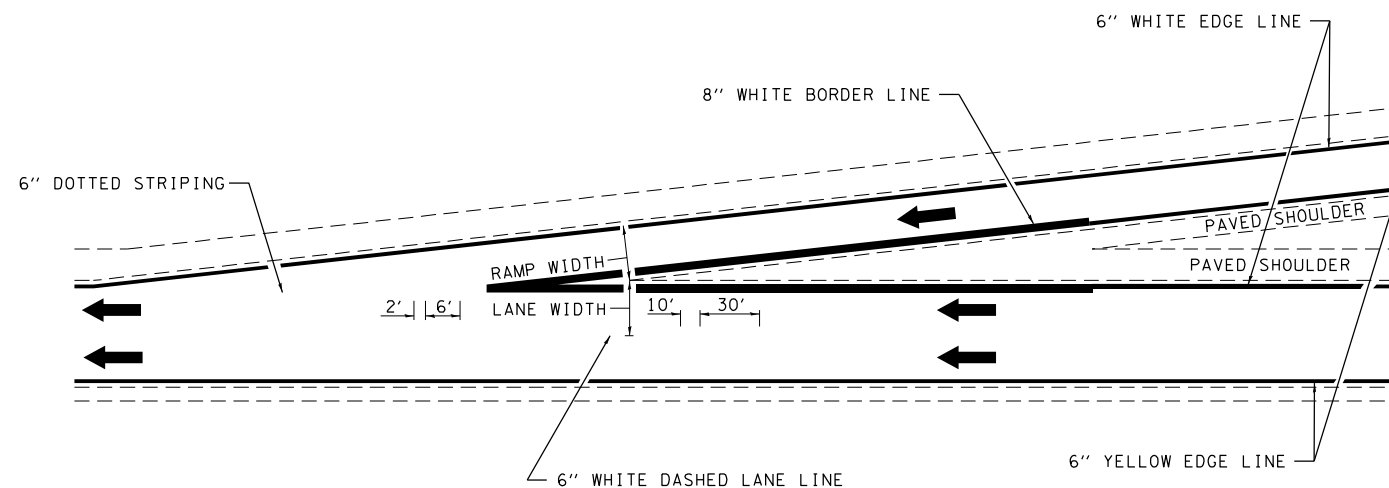
F.A.I. RTE.	SECTION	COUNTY	TOTAL SHEETS	SHEET NO.
57	D7 HMA RESURF 2023-1	EFFINGHAM	11	9
CONTRACT NO. 74A75				
ILLINOIS		FED. AID PROJECT		



TYPICAL EXIT RAMP MARKING



TYPICAL CENTERLINE & EDGELINE MARKINGS



TYPICAL ENTRANCE RAMP MARKING

NOT TO SCALE

MODEL: Default
FILE NAME: p:\ultra-cw-beadley.com\PIV\DOT\Documents\DOT Office\Director_7\Project\74A75\CADD\DATA\CAD\Sheet\74A75-Plan\Detail.dgn

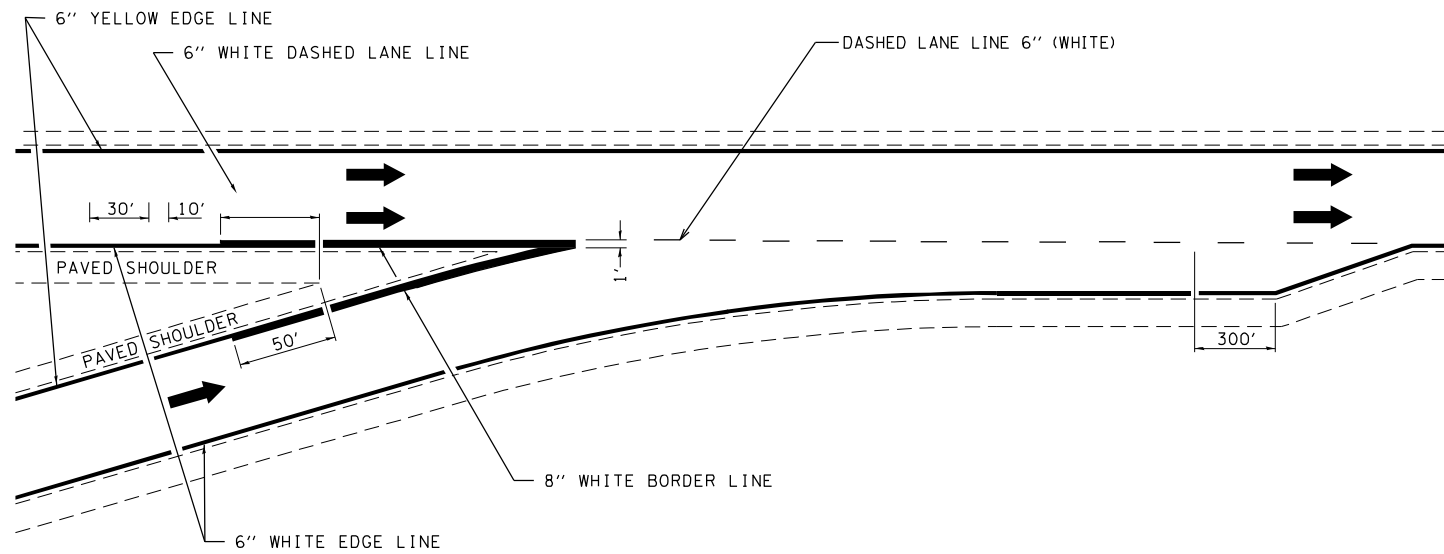
USER NAME = stefenmk	DESIGNED -	REVISED -
	DRAWN -	REVISED -
PLOT SCALE = 100,0000' / in.	CHECKED -	REVISED -
PLOT DATE = 2/9/2022	DATE -	REVISED -

STATE OF ILLINOIS
DEPARTMENT OF TRANSPORTATION

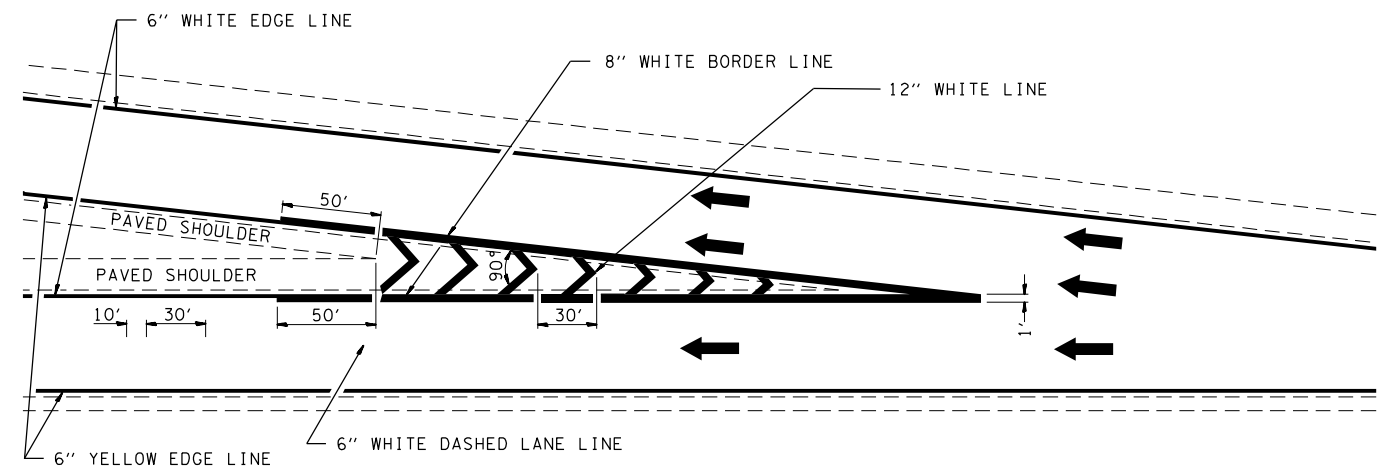
PAVEMENT MARKING DETAILS

SCALE: SHEET OF SHEETS STA. TO STA.

F.A.I. RTE.	SECTION	COUNTY	TOTAL SHEETS	SHEET NO.
57	D7 HMA RESURF 2023-1	EFFINGHAM	11	10
CONTRACT NO. 74A75				
ILLINOIS FED. AID PROJECT				



TYPICAL CONVERGENCE MARKING



TYPICAL DIVERGENCE MARKING

NOT TO SCALE

MODEL: Default
 FILE: \\mariya-pc\public\aw-beadley.com\PIV\DOT\Documents\DOT Office\Director_7\Project\74A75\CADD\DATA\CAD\Sheet\ID74A75-sh-detailed.dgn

USER NAME = steffenmk	DESIGNED -	REVISED -
	DRAWN -	REVISED -
PLOT SCALE = 100,0000' / in.	CHECKED -	REVISED -
PLOT DATE = 2/9/2022	DATE -	REVISED -

**STATE OF ILLINOIS
DEPARTMENT OF TRANSPORTATION**

PAVEMENT MARKING DETAILS

SCALE: SHEET OF SHEETS STA. TO STA.

F.A.I. RTE.	SECTION	COUNTY	TOTAL SHEETS	SHEET NO.
57	D7 HMA RESURF 2023-1	EFFINGHAM	11	11
CONTRACT NO. 74A75				
ILLINOIS FED. AID PROJECT				