

STATE OF ILLINOIS
DEPARTMENT OF TRANSPORTATION

F.A. RTE.	SECTION	COUNTY	TOTAL SHEETS	SHEET NO.
*	D7 PATCHING 2022-6	EFFINGHAM	5	1
* FAS 2701 & FAS 2716		ILLINOIS	CONTRACT NO. 74A81	

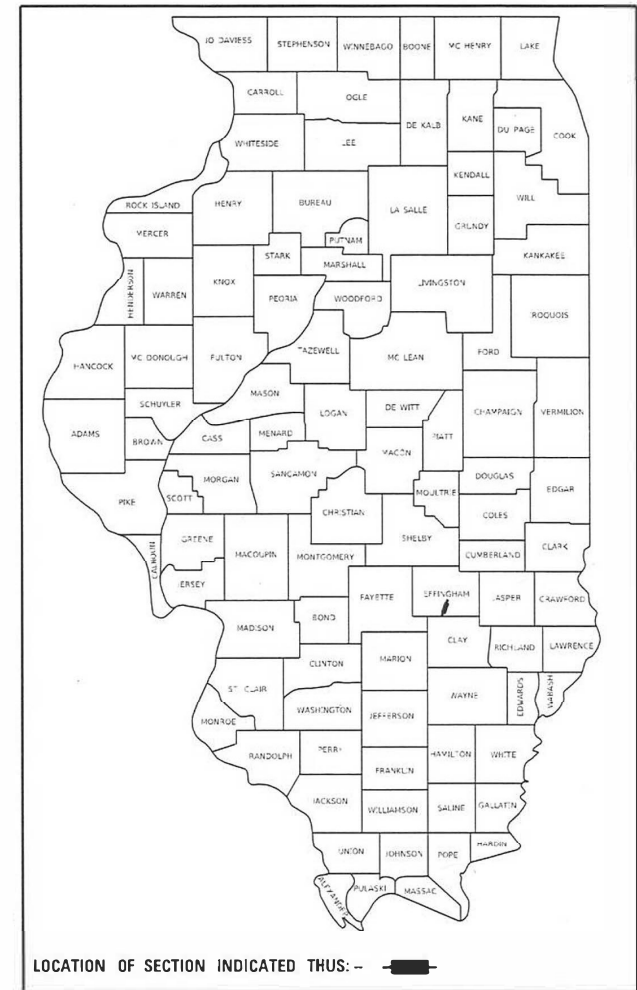
FOR INDEX OF SHEETS, SEE SHEET NO. 2

ADT = 3,050

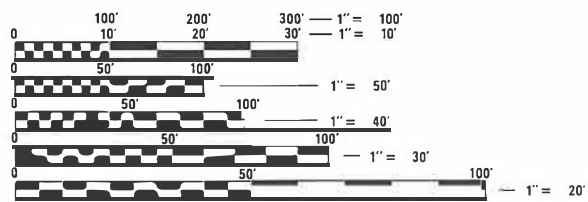
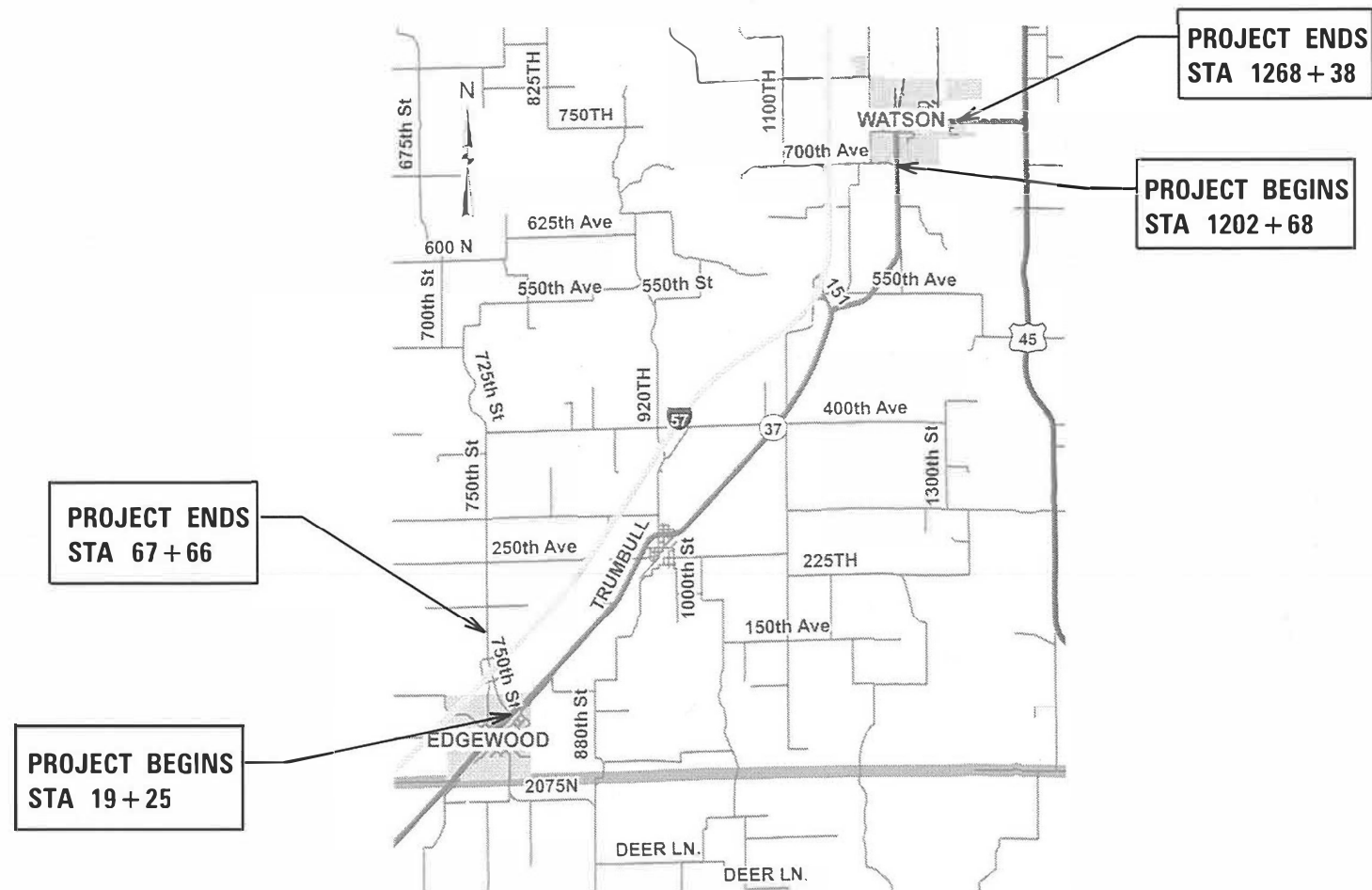
PROPOSED
HIGHWAY PLANS

FAS ROUTES 2701 & 2716 (IL 37)
SECTION D7 PATCHING 2022-6
PATCHING
EFFINGHAM COUNTY

D-97-012-21



C-97-181-21



FULL SIZE PLANS HAVE BEEN PREPARED USING STANDARD ENGINEERING SCALES. REDUCED SIZED PLANS WILL NOT CONFORM TO STANDARD SCALES. IN MAKING MEASUREMENTS ON REDUCED PLANS, THE ABOVE SCALES MAY BE USED.

J.U.L.I.E.
JOINT UTILITY LOCATION INFORMATION FOR EXCAVATORS
1-800-892-0123
OR 811

PROJECT ENGINEER BRIAN LEWIS
PROJECT MANAGER ANDREW NIEMERG

CONTRACT NO. 74A81

GROSS LENGTH = 11510 FT. = 2.18 MILE
NET LENGTH = 11510 FT. = 2.18 MILE

STATE OF ILLINOIS
DEPARTMENT OF TRANSPORTATION

SUBMITTED January 31, 2022
Jeffrey P. Meyer REGIONAL ENGINEER
March 25, 2022
[Signature] ENGINEER OF DESIGN AND ENVIRONMENT
March 23, 2022
Stephen M. Lewis DIRECTOR OF HIGHWAYS PROJECT IMPLEMENTATION

PRINTED BY THE AUTHORITY
OF THE STATE OF ILLINOIS

INDEX OF SHEETS

SHEET NO.	ITEM
1	COVER SHEET
2	GENERAL NOTES, INDEX OF SHEETS & LIST OF STANDARDS
3	SUMMARY OF QUANTITIES
4-5	PATCHING SCHEDULES

THE FOLLOWING STANDARDS ARE A PART OF THESE PLANS AND ARE INCLUDED AFTER SHEET NO. 5:

STD. NO.	DESCRIPTION
000001-08	STANDARD SYMBOLS, ABBREVIATIONS AND PATTERNS
001001-02	AREAS OF REINFORCEMENT BARS
001006	DECIMAL OF AN INCH AND OF A FOOT
420001-10	PAVEMENT JOINTS
420701-03	PAVEMENT WELDED WIRE REINFORCEMENT
442101-09	CLASS B PATCHES
442201-03	CLASS D PATCHES
701201-05	LANE CLOSURE, 2L, 2W, DAY ONLY, >= 45 MPH
701501-06	URBAN LANE CLOSURE, 2L, 2W, UNDIVIDED
701901-08	TRAFFIC CONTROL DEVICES

GENERAL NOTES

THIS PROJECT IS LOCATED ON ILL 37 BETWEEN EASTWOOD STREET & 700TH AVE IN WATSON AND ON THE CONNECTOR ROAD (CH 29) BETWEEN I-57 AND IL 37 IN EDGEWOOD

THE WORK INCLUDED IN SECTION D7 PATCHING 2022-6 CONSISTS OF CLASS B PAVEMENT PATCHING, CLASS D PAVEMENT PATCHING, TRAFFIC CONTROL, AND ANY OTHER WORK NECESSARY TO COMPLETE THE SECTION.

THE ACTUAL LOCATIONS OF PAVEMENT PATCHING AND FINAL QUANTITIES WILL BE DETERMINED BY THE ENGINEER IN THE FIELD.

THE FOLLOWING MIXTURE REQUIREMENTS ARE APPLICABLE TO THIS PROJECT:

LOCATION(S)	MIXTURE USE(S)	PG	DESIGN AIR VOIDS	MIXTURE COMPOSITION	FRICTION AGGREGATE	MIXTURE WEIGHT	QUALITY MANAGEMENT PROGRAM	SUBLOT SIZE	MATERIAL TRANSFER DEVICE (REQUIRED?)
CLASS "D" PATCHING	HOT-MIX ASPHALT PATCHING, CLASS "D" (BOTTOM LIFTS)	PG 64-22	4.0% @ N=70	IL - 19.0	N/A	N70	QC/QA	N/A	N/A
CLASS "D" PATCHING	HOT-MIX ASPHALT PATCHING, CLASS "D" (TOP LIFT)	PG 64-22	4.0% @ N=70	IL - 9.5	MIXTURE C	N70	QC/QA	N/A	N/A

REV. - MS

MODEL: Default
 FILE NAME: P:\Public\sw_bentley.com\pwwd\DOT\Documents\DOT_Offices\District_7\Project\74A81\CAD\Drawings\CAD\Drawings\74A81-sht-general.dgn

USER NAME = steffennk	DESIGNED -	REVISED -	STATE OF ILLINOIS DEPARTMENT OF TRANSPORTATION	INDEX OF SHEETS & GENERAL NOTES		F.A.* RTE.	SECTION	COUNTY	TOTAL SHEETS	SHEET NO.	
	DRAWN -	REVISED -		SCALE:	SHEET 1 OF 1 SHEETS	STA.	TO STA.	* D7 PATCHING 2022-6	EFFINGHAM	5	2
PLOT SCALE = 2.0000' / in.	CHECKED -	REVISED -					*FAS 2701, FAS 2716		CONTRACT NO. 74A81		
PLOT DATE = 2/8/2022	DATE -	REVISED -					ILLINOIS FED. AID PROJECT				

100% STATE

SUMMARY OF QUANTITIES			TOTAL QUANTITIES	CONSTRUCTION TYPE CODE		
CODE NO	ITEM	UNIT		0006		
4420050	WELDED WIRE REINFORCEMENT	SO YD	203	203		
44200970	CLASS B PATCHES, TYPE II, 10 INCH	SO YD	246	246		
44200974	CLASS B PATCHES, TYPE III, 10 INCH	SO YD	76	76		
44200976	CLASS B PATCHES, TYPE IV, 10 INCH	SO YD	127	127		
44201299	DOWEL BARS 1 1/2"	EACH	660	660		
44201815	CLASS D PATCHES, TYPE II, 14 INCH	SO YD	54	54		
44201819	CLASS D PATCHES, TYPE III, 14 INCH	SO YD	16	16		
44201821	CLASS D PATCHES, TYPE IV, 14 INCH	SO YD	380	380		
44213200	SAW CUTS	FOOT	1910	1910		
44213204	TIE BARS 3/4"	EACH	45	45		
67100100	MOBILIZATION	L SUM	1	1		
70100450	TRAFFIC CONTROL AND PROTECTION, STANDARD	L SUM	1	1		
	701201					
70102620	TRAFFIC CONTROL AND PROTECTION, STANDARD	L SUM	1	1		
	701501					

100% STATE

SUMMARY OF QUANTITIES			TOTAL QUANTITIES	CONSTRUCTION TYPE CODE		
CODE NO	ITEM	UNIT		0006		
70107025	CHANGEABLE MESSAGE SIGN	CAL DA	56	56		

MODEL: Default
 FILE NAME: p:\project-aw-bee\paw.com\FW\DOT\Documents\DOT Office\Dir\dir_7\Project\74A81\CAD\DATA\CAD\Sheet\74A81-L-1-1-500.dgn

USER NAME = steffenmk	DESIGNED -	REVISED -
	DRAWN -	REVISED -
PLOT SCALE = 100,0000' / in.	CHECKED -	REVISED -
PLOT DATE = 2/8/2022	DATE -	REVISED -

**STATE OF ILLINOIS
DEPARTMENT OF TRANSPORTATION**

SUMMARY OF QUANTITIES

SCALE: SHEET 1 OF 1 SHEETS STA. TO STA.

F.A. RTE.	SECTION	COUNTY	TOTAL SHEETS	SHEET NO.
*	D7 PATCHING 2022-6	EFFINGHAM	5	3
* FAS 2701 & FAS 2716			CONTRACT NO. 74A81	
ILLINOIS FED. AID PROJECT				

CLASS D PATCHING

IL 37 in Watson

Contract: 74A81

Patch Number	Lane	Sta Dist in Ft	Length ft	Width ft	Plan Depth in	44201811 Type 1 sy	44201815 Type 2 sy	44201819 Type 3 sy	44201821 Type 4 sy
1	NB	1228+90	6.0	12.0	14.0		8.0		
2	NB	1229+20	8.0	12.0	14.0		10.7		
3	NB	1231+45	6.0	12.0	14.0		8.0		
4	SB	1232+05	10.0	12.0	14.0		13.3		
5	SB	1231+80	140.0	12.0	14.0				186.7
6	SB	1229+25	120.0	12.0	14.0				160.0
7	SB	1227+40	12.0	12.0	14.0			16.0	
8	SB	1227+24	25.0	12.0	14.0				33.3
9	SB	1226+50	10.0	12.0	14.0		13.3		

CLASS D PATCHES 14"	0	54	16	380
Number Each	0	5	1	3

TOTAL CLASS D PATCHING	450 SQ. YD.
------------------------	-------------

MODEL: Default
 FILE NAME: p:\ultra-cw-bead-fy.com\PIV\DOT\Documents\DOT_offices\Dir\dir_7\Project\74A81\CAD\DATA\CAD\Sheet\74A81-4-14-2022.dwg

USER NAME = stefenmk	DESIGNED -	REVISED -	STATE OF ILLINOIS DEPARTMENT OF TRANSPORTATION	PATCHING SCHEDULE		F.A.S RTE.	SECTION	COUNTY	TOTAL SHEETS	SHEET NO.
PLOT SCALE = 2,000' / in.	DRAWN -	REVISED -				* D7 PATCHING 2022-6	EFFINGHAM	5	4	
PLOT DATE = 2/8/2022	CHECKED -	REVISED -		SCALE:		SHEET 1 OF 2 SHEETS	STA.	TO STA.	*FAS 2701 & FAS 2716	
	DATE -	REVISED -							CONTRACT NO. 74A81	
								ILLINOIS FED. AID PROJECT		

CLASS B PATCHING

Edgewood Connector (CH 29) from IL 37 past I-57 to County Maintenance

Contract: 74A81

Patch Number	Lane	Station	Length ft	Width ft	Plan Depth in	44200966 Type 1 sy	44200970 Type 2 sy	44200974 Type 3 sy	44200976 Type 4 sy	44213204 Tie Bars ea	44200050 Pavt Fab sy	44213200 Saw Cut ft	44201299 Dowels ea
1	WB	21+85	6.0	12.0	10.0		8.0					49.5	20
2	WB	22+85	6.0	12.0	10.0		8.0					49.5	20
3	WB	23+32	6.0	12.0	10.0		8.0					49.5	20
4	WB	23+95	6.0	12.0	10.0		8.0					49.5	20
5	WB	24+65	6.0	12.0	10.0		8.0					49.5	20
6	WB	25+95	10.0	12.0	10.0		13.3					57.5	20
7	WB	28+95	6.0	12.0	10.0		8.0					49.5	20
8	WB	32+15	6.0	12.0	10.0		8.0					49.5	20
9	WB	34+30	10.0	12.0	10.0		13.3					57.5	20
10	EB	67+20	50.0	12.0	10.0				66.7	24	66.7	137.5	20
11	EB	58+30	6.0	12.0	10.0		8.0					49.5	20
12	EB	51+95	6.0	12.0	10.0		8.0					49.5	20
13	EB	51+15	8.0	12.0	10.0		10.7					53.5	20
14	EB	48+30	8.0	12.0	10.0		10.7					53.5	20
15	EB	47+45	14.0	12.0	10.0			18.7			18.7	65.5	20
16	EB	47+15	20.0	12.0	10.0				26.7	9	26.7	77.5	20
17	EB	46+80	15.0	12.0	10.0			20.0			20.0	67.5	20
18	EB	46+45	10.0	12.0	10.0		13.3					57.5	20
19	EB	46+15	16.0	12.0	10.0			21.3			21.3	69.5	20
20	EB	42+50	6.0	12.0	10.0		8.0					49.5	20
21	EB	42+25	8.0	12.0	10.0		10.7					53.5	20
22	EB	41+80	12.0	12.0	10.0			16.0			16.0	61.5	20
23	EB	41+35	6.0	12.0	10.0		8.0					49.5	20
24	EB	41+20	25.0	12.0	10.0				33.3	12	33.3	87.5	20
25	EB	40+75	8.0	12.0	10.0		10.7					53.5	20
26	EB	32+15	6.0	12.0	10.0		8.0					49.5	20
27	EB	28+90	10.0	12.0	10.0		13.3					57.5	20
28	EB	25+95	10.0	12.0	10.0		13.3					57.5	20
29	EB	24+65	6.0	12.0	10.0		8.0					49.5	20
30	EB	23+95	6.0	12.0	10.0		8.0					49.5	20
31	EB	22+85	6.0	12.0	10.0		8.0					49.5	20
32	EB	21+85	6.0	12.0	10.0		8.0					49.5	20
33	EB	21+15	6.0	12.0	10.0		8.0					49.5	20

CLASS B PATCHES 10"	0	246	76	127	45	203	1910	660
---------------------	---	-----	----	-----	----	-----	------	-----

Number Each	0	26	4	3
-------------	---	----	---	---

TOTAL CLASS B PATCHES	449	SQ.YD.
-----------------------	-----	--------

MODEL: Default
 FILE: \\nafe-pw-bentley.com\P\DOT\Documents\DOT Office\Dir\dr_7\Project\74A81\CADD\DATA\CAD\Sheet\74A81-Edg-Edg-Edg.dwg

USER NAME = stefenmk	DESIGNED -	REVISED -
	DRAWN -	REVISED -
PLOT SCALE = 2,0000' / in.	CHECKED -	REVISED -
PLOT DATE = 2/8/2022	DATE -	REVISED -

STATE OF ILLINOIS
DEPARTMENT OF TRANSPORTATION

PATCHING SCHEDULES

SCALE: SHEET 2 OF 2 SHEETS STA. TO STA.

F.A.S. RTE.	SECTION	COUNTY	TOTAL SHEETS	SHEET NO.
*	D7 PATCHING 2022-6	EFFINGHAM	5	5
FAS 2701 & FAS 2716			CONTRACT NO. 74A81	
ILLINOIS FED. AID PROJECT				