

STATE OF ILLINOIS
DEPARTMENT OF TRANSPORTATION

F.A.P. RTE.	SECTION	COUNTY	TOTAL SHEETS	SHEET NO.
789	201PP-1	MADISON	8	1
		ILLINOIS CONTRACT NO. 76P92		

FOR INDEX OF SHEETS, SEE SHEET NO. 2

2019 ADT = 20,500 (ACTUAL)
2022 ADT = 20,900 (ESTIMATED)
2042 ADT = 23,500 (ESTIMATED)
SU = 4.4% MU = 2.2%
OTHER PRINCIPAL ARTERIAL

**PROPOSED
HIGHWAY PLANS**

FAP ROUTE 789 (IL 003)
SECTION 201PP-1
PATCHING
MADISON COUNTY

C-98-063-22

D-98-034-22

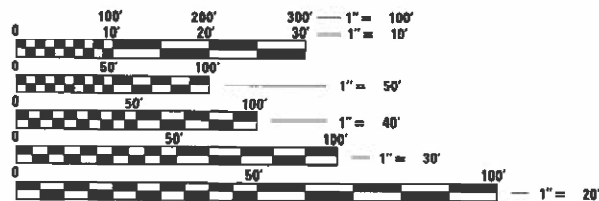
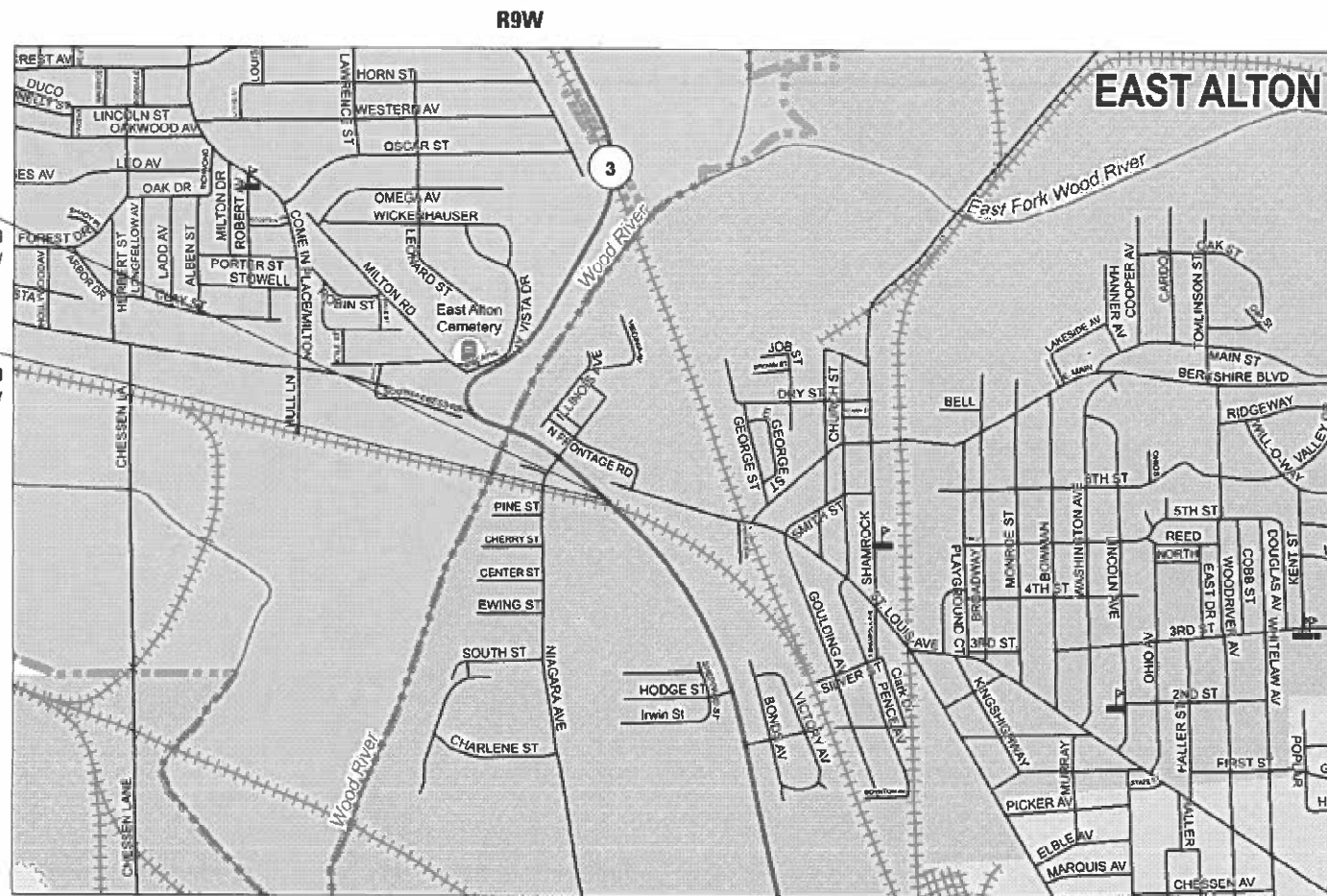


LOCATION OF SECTION INDICATED THIS: - [black rectangle] -



LOCATION 1:
LATITUDE: 38° 52' 56.80" N
LONGITUDE: 90° 7' 9.39" W

LOCATION 2:
LATITUDE: 38° 52' 56.04" N
LONGITUDE: 90° 7' 6.41" W



FULL SIZE PLANS HAVE BEEN PREPARED USING STANDARD ENGINEERING SCALES. REDUCED SIZED PLANS WILL NOT CONFORM TO STANDARD SCALES. IN MAKING MEASUREMENTS ON REDUCED PLANS, THE ABOVE SCALES MAY BE USED.

J.U.L.I.E.
JOINT UTILITY LOCATION INFORMATION FOR EXCAVATORS
1-800-892-0123
OR 811

PROJECT ENGINEER : BILLIE OWEN
PROJECT MANAGER : MIKE BERG

GROSS LENGTH = 135 FT. = .026 MILE
NET LENGTH = 135 FT. = .026 MILE

CONTRACT NO. 76P92

STATE OF ILLINOIS
DEPARTMENT OF TRANSPORTATION

SUBMITTED Feb. 9 20 22
Stephen Trainor
REGIONAL ENGINEER

March 25 2022
[Signature]
ENGINEER OF DESIGN AND ENVIRONMENT

March 23 2022
Stephen M. Trainor
DIRECTOR OF HIGHWAYS PROJECT IMPLEMENTATION

**PRINTED BY THE AUTHORITY
OF THE STATE OF ILLINOIS**

INDEX OF SHEETS

- 1 COVER SHEET
- 2 INDEX OF SHEETS, HIGHWAY STANDARDS, GENERAL NOTES, COMMITMENTS
- 3 SUMMARY OF QUANTITIES
- 4 LOCATION MAP
- 5 TYPICALS
- 6 SCHEDULES
- 7 PAVEMENT MARKING DETAIL
- 8 CONDUIT LOCATION DETAIL

HIGHWAY STANDARDS

000001-08
 001001-02
 001006
 442101-09
 701701-10
 701901-08
 780001-05
 420001-10
 420701-03

GENERAL NOTES

- 1 UTILITIES KNOWN TO HAVE FACILITIES WITHIN THE PROJECT AREA:
 AMEREN ILLINOIS
 AT&T ILLINOIS
 CHARTER COMMUNICATIONS, INC.
 VILLAGE OF EAST ALTON
 EVERSTREAM GLC HOLDING COMPANY LLC
 WOOD RIVER DRAINAGE & LEVEE DISTRICT
- 2 NO SURVEY WAS PERFORMED FOR THIS PROJECT AND THE PLANS WERE CREATED USING MICROFILM AND FIELD MEASUREMENTS
- 3 TWO CHANGEABLE MESSAGE SIGNS SHALL BE REQUIRED FOR THIS PROJECT. THEY SHALL BE PLACED 2 WEEKS PRIOR TO ANY LANE CLOSURE AND SHALL REMAIN UP FOR THE DURATION OF THE PROJECT. THE CHANGEABLE MESSAGE SIGNS SHALL BE PLACED AT THE DIRECTION OF THE ENGINEER.

- 4 THE DEPARTMENT STRONGLY ENCOURAGES THE PRIME CONTRACTOR AND THEIR APPROVED SUB-CONTRACTORS TO HIRE MINORITY, WOMEN AND DISADVANTAGED INDIVIDUALS FROM ITS FEDERALLY FUNDED HIGHWAY CONSTRUCTION CAREERS TRAINING PROGRAM (HCCTP) TO HELP MEET WORKFORCE AND TRAINEE GOALS. THIS PROGRAM IS TRAINING MINORITIES, WOMEN AND DISADVANTAGED INDIVIDUALS IN HIGHWAY CONSTRUCTION-RELATED SKILLS, E.G., MATH FOR THE TRADES, JOB READINESS, TECHNICAL SKILLS, COURSEWORK (CARPENTRY, CONCRETE FLATWORK, BLUEPRINT READING, SITE PLANS, SITE WORK, TOOLS USE, ETC.) AND OSHA 10 HOUR CERTIFICATION, TO PREPARE THEM FOR A CAREER IN THE HIGHWAY CONSTRUCTION TRADES. GRADUATES ARE WELL-TRAINED AND READY TO BECOME PRODUCTIVE ENTRY-LEVEL CONSTRUCTION WORKERS. CONTACT THE DISTRICT 8 EEO OFFICE AT 618-346-3360 AND/OR THE HCCTP COORDINATOR AT 618-874-6528 TO LEARN MORE ABOUT THE PROGRAM AND FOR ASSISTANCE IN MEETING WORKFORCE AND TRAINEE GOALS.
- 5 HIGH EARLY STRENGTH CONCRETE IS ACCEPTABLE FOR USE IN PATCHING OPERATIONS.
- 6 THE RESIDENT ENGINEER SHALL VERIFY THE EXISTENCE OF HIGHWAY LIGHTING, INTELLIGENT TRANSPORTATION SYSTEMS (I.T.S.) UTILITIES, AND/OR ELECTRICAL CABLES ASSOCIATED WITH TRAFFIC SIGNALS WITHIN THE PROJECT LIMITS. IF ANY OF THESE EXIST WITHIN THE PROJECT LIMITS, AND IF THESE ITEMS REQUIRE LOCATING, THE CONTRACTOR SHALL BE DIRECTED TO DO SO ACCORDING TO SECTION 803 OF THE STANDARD SPECIFICATIONS. THIS WORK SHALL BE PAID FOR ACCORDING TO ARTICLE 109.04 OF THE STANDARD SPECIFICATIONS.

COMMITMENTS

NONE

REV. - MS

MODEL: s:\MODEL\MHFS
 FILE: Mhfs_Plan\Subcontract\benley.com\PROJECTS\DOT Documents\DOT Office\District 8\Project\87692\CADD\Drawings\CADDsheets\87692-sh-01-generals.dgn

USER NAME = hughesrd	DESIGNED - _____	REVISED - _____	STATE OF ILLINOIS DEPARTMENT OF TRANSPORTATION	INDEX OF SHEETS, HIGHWAY STANDARDS, GENERAL NOTES, COMMITMENTS	F.A.P. RTE. = 789	SECTION = 201PP-1	COUNTY = MADISON	TOTAL SHEETS = 8	SHEET NO. = 2	
PLOT SCALE = 40.0000 "/ in.	CHECKED - _____	REVISED - _____			SCALE: _____	SHEET 1 OF 1 SHEETS	STA. _____ TO STA. _____	CONTRACT NO. 76P92		
PLOT DATE = 2/8/2022	DATE - _____	REVISED - _____			ILLINOIS FED. AID PROJECT					

				CONSTR. CODE
				100% STATE
CODE NO.	ITEM	UNIT	TOTAL QUANTITY	ROADWAY 0006 URBAN
44200050	WELDED WIRE REINFORCEMENT	SQ YD	545	545
44200976	CLASS B PATCHES, TYPE IV, 10 INCH	SQ YD	545	545
44201299	DOWEL BARS 1 1/2"	EACH	62	62
44213200	SAW CUTS	FOOT	632	632
44213208	TIE BARS 1 1/4"	EACH	144	144
67100100	MOBILIZATION	L SUM	1	1
70102635	TRAFFIC CONTROL AND PROTECTION, STANDARD 701701	L SUM	1	1
70107025	CHANGEABLE MESSAGE SIGN	CAL DA	58	58
70200100	NIGHTTIME WORK ZONE LIGHTING	L SUM	1	1
* 78001100	PAINT PAVEMENT MARKING - LETTERS AND SYMBOLS	SQ FT	86	86
* 78001110	PAINT PAVEMENT MARKING - LINE 4"	FOOT	207	207
* 78001130	PAINT PAVEMENT MARKING - LINE 6"	FOOT	90	90
* 78001180	PAINT PAVEMENT MARKING - LINE 24"	FOOT	55	55
Z0048665	RAILROAD PROTECTIVE LIABILITY INSURANCE	L SUM	1	1

* SPECIALTY ITEM

MODEL: I:\MODEL\MAME FILE NAME: p:\pub\c:\paw\bea\paw.com\PIV\DOT\Documents\DOT Office\Dir\dr. E:\Project\087692\CADD\DATA\CAD\Sheet\087692-ah-SQ.dgn

USER NAME = hughesrd	DESIGNED - _____	REVISED - _____	STATE OF ILLINOIS DEPARTMENT OF TRANSPORTATION	SUMMARY OF QUANTITIES				F.A.P. RTE.	SECTION	COUNTY	TOTAL SHEETS	SHEET NO.
PLOT SCALE = 40,0000 * / in.	CHECKED - _____	REVISED - _____						789	201PP-1	MADISON	8	3
PLOT DATE = 2/10/2022	DATE - _____	REVISED - _____		SCALE: _____	SHEET 1	OF 2 SHEETS	STA. _____	TO STA. _____	CONTRACT NO. 76P92			
								ILLINOIS FED. AID PROJECT				



MODEL: \\MODEL\MAME
 FILE: \\MAILS\p\illscba\ba\ba\com\PIV\DOT\Documents\DOT Office\Dir\drf: E:\Project\0876992\CADD\Drawn\CAD\Sheet\0876992-sh1-4-jplcal.dgn

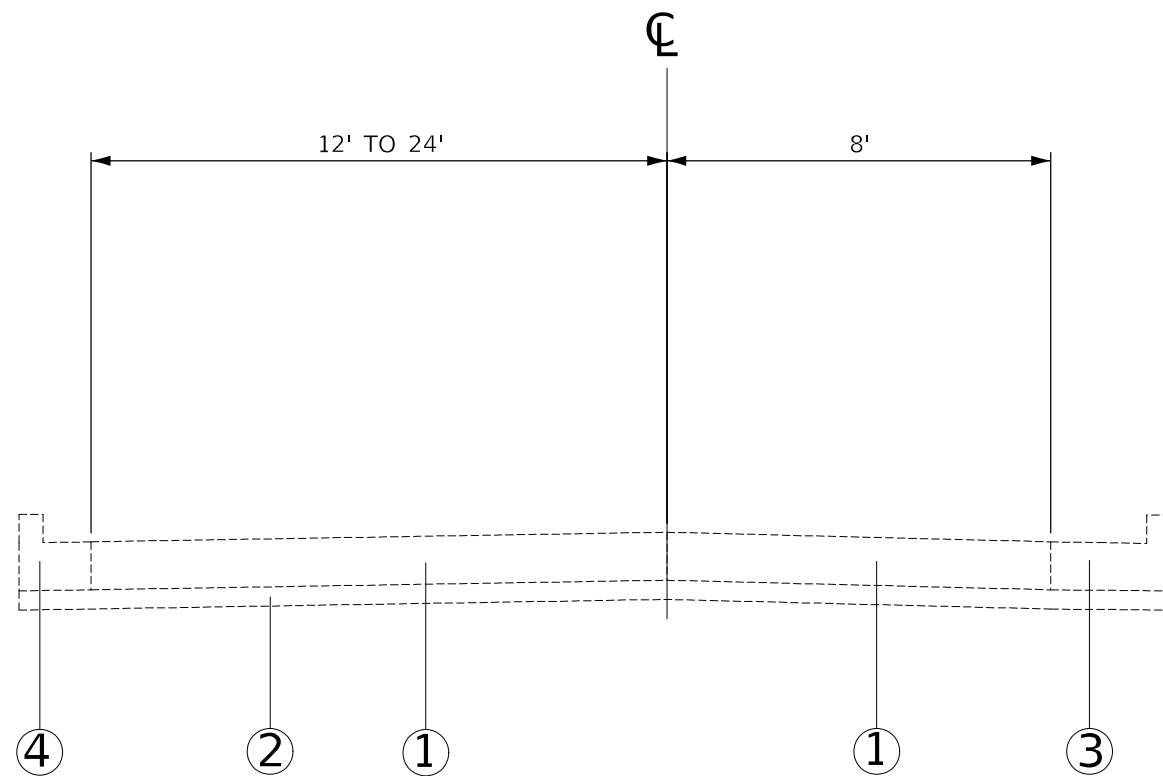
USER NAME = hughesrd	DESIGNED - _____	REVISED - _____
	DRAWN - _____	REVISED - _____
PLOT SCALE = 40,0000 * / in.	CHECKED - _____	REVISED - _____
PLOT DATE = 2/8/2022	DATE - _____	REVISED - _____

STATE OF ILLINOIS
DEPARTMENT OF TRANSPORTATION

LOCATION MAP	
SCALE: NTS	SHEET 1 OF 1 SHEETS
STA. _____	TO STA. _____

F.A.P. RTE. 789	SECTION 201PP-1	COUNTY MADISON	TOTAL SHEETS 8	SHEET NO. 4
CONTRACT NO. 76P92				
ILLINOIS FED. AID PROJECT				

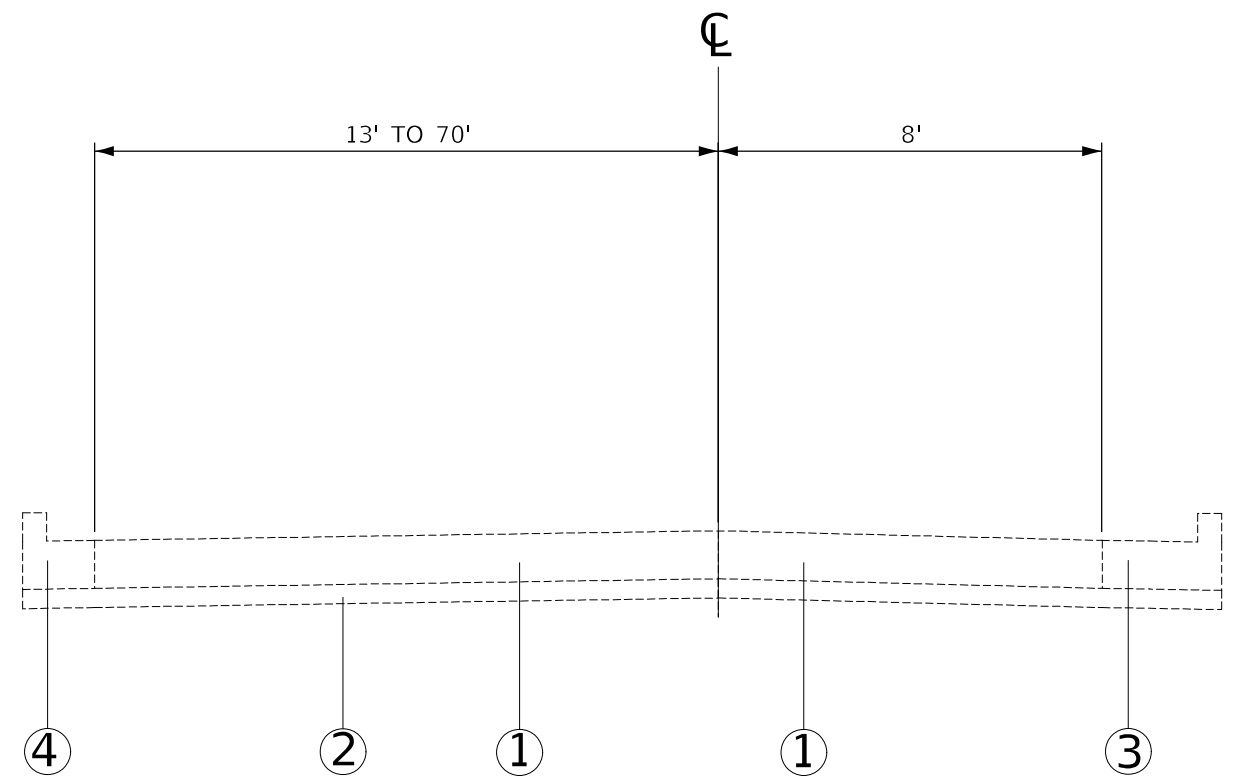
IL 003



EXISTING TYPICAL SECTION

WESTERN PATCH

IL 003



EXISTING TYPICAL SECTION

EASTERN PATCH

LEGEND

- ① REINFORCED JOINTED P.C.C. PAVEMENT, 10"
- ② SUB-BASE GRANULAR MATERIAL, TYPE A, 4"
- ③ COMB. CONC. CURB & GUTTER, TY. B-6.24
- ④ COMB. CONC. CURB & GUTTER, TY. B-6.12

MODEL: \\MODEL\MAME
FILE: \\MAILS_PUB\Public\ba_beaufay.com\PIV\DOT\Documents\DOT_Offices\Dir\dr. B\Project\087692\CADD\ba\CAD\Sheet\087692-sh1-typical.dgn

USER NAME = hugesrd	DESIGNED - _____	REVISED - _____
	DRAWN - _____	REVISED - _____
PLOT SCALE = 40,0000 * / in.	CHECKED - _____	REVISED - _____
PLOT DATE = 2/8/2022	DATE - _____	REVISED - _____

**STATE OF ILLINOIS
DEPARTMENT OF TRANSPORTATION**

TYPICALS

SCALE: _____ SHEET 1 OF 1 SHEETS STA. _____ TO STA. _____

F.A.P. RTE.	SECTION	COUNTY	TOTAL SHEETS	SHEET NO.
789	201PP-1	MADISON	8	5
CONTRACT NO. 76P92			ILLINOIS FED. AID PROJECT	

PATCHING SCHEDULE

LOCATION	LENGTH	WIDTH	CLASS B PATCHES, TYPE IV, 10"	WELDED WIRE REINFORCEMENT	SAW CUTS	DOWEL BARS 1 1/2"	TIE BARS 1 1/4"
	FOOT	FOOT	SQ YD	SQ YD	FOOT	EACH	EACH
WESTERN PATCH	105	20 TO 32	305.0	305.0	274.0	44.0	72.0
EASTERN PATCH	80	21 TO 78	240.0	240.0	358.0	18.0	72.0
TOTAL :			545.0	545.0	632.0	62.0	144.0

PAVEMENT MARKING SCHEDULE

LOCATION	PAINT PAVEMENT MARKING				
	4"		6"	24"	LETTERS & SYMBOLS
	SOLID WHITE EDGE LINE	SOLID YELLOW EDGE LINE	SOLID WHITE EDGE LINE	STOP BARS	
	FOOT	FOOT	FOOT	FOOT	SQ FT
WESTERN PATCH	112.0	95.0		55.0	62.0
EASTERN PATCH			90.0		24.0
TOTAL :		207.0	90.0	55.0	86.0

MODEL: \\MODEL\MAME
 FILE: \\MAILS\pub\lucy\ba\bead\p\com\PIV\DOT\Documents\DOT_Offices\Dir\dr. E\Project\087692\CADD\DATA\CAD\Sheet\087692-sh1-cv-pfal.dgn

USER NAME = hughesrd	DESIGNED - _____	REVISED - _____
	DRAWN - _____	REVISED - _____
PLOT SCALE = 40,0000 * / in.	CHECKED - _____	REVISED - _____
PLOT DATE = 2/10/2022	DATE - _____	REVISED - _____

**STATE OF ILLINOIS
DEPARTMENT OF TRANSPORTATION**

SCHEDULES	
SCALE: NTS	SHEET 1 OF 1 SHEETS STA. _____ TO STA. _____

F.A.P. RTE.	SECTION	COUNTY	TOTAL SHEETS	SHEET NO.
789	201PP-1	MADISON	8	6
			CONTRACT NO. 76P92	
ILLINOIS FED. AID PROJECT				

MODEL: \\MODEL\MAME
 FILE: NAME: p:\pub\cva\bea\pav.com\PIV\DOT\Documents\DOT_Offices\Dir\dr: E:\Project\087692\CADD\DATA\CAD\Sheet\087692_sht-7.pical.dgn



24" STOP BAR, WHITE

RAILROAD "X" 20 FT

RAILROAD "R" 6 FT



YIELD BAR, EIGHT 24" BY 36" TRIANGLES

4" SOLID WHITE EDGE LINE

4" SOLID YELLOW EDGE LINE

6" SOLID WHITE EDGE LINE

USER NAME = hughesrd	DESIGNED - _____	REVISED - _____
	DRAWN - _____	REVISED - _____
PLOT SCALE = 40,0000 * / in.	CHECKED - _____	REVISED - _____
PLOT DATE = 2/8/2022	DATE - _____	REVISED - _____

STATE OF ILLINOIS
DEPARTMENT OF TRANSPORTATION

PAVEMENT MARKING DETAIL

SCALE: NTS SHEET 1 OF 1 SHEETS STA. _____ TO STA. _____

F.A.P. RTE. 789	SECTION 201PP-1	COUNTY MADISON	TOTAL SHEETS 8	SHEET NO. 7
CONTRACT NO. 76P92			ILLINOIS FED. AID PROJECT	

F.A. RTE.	SECTION	COUNTY	TOTAL SHEETS	SHEET NO.
789	202-1TS	MADISON	34	10
F.H.W.A. REG.	ILLINOIS	PROJECT		

SIGN LIGHTING PLAN LEGEND

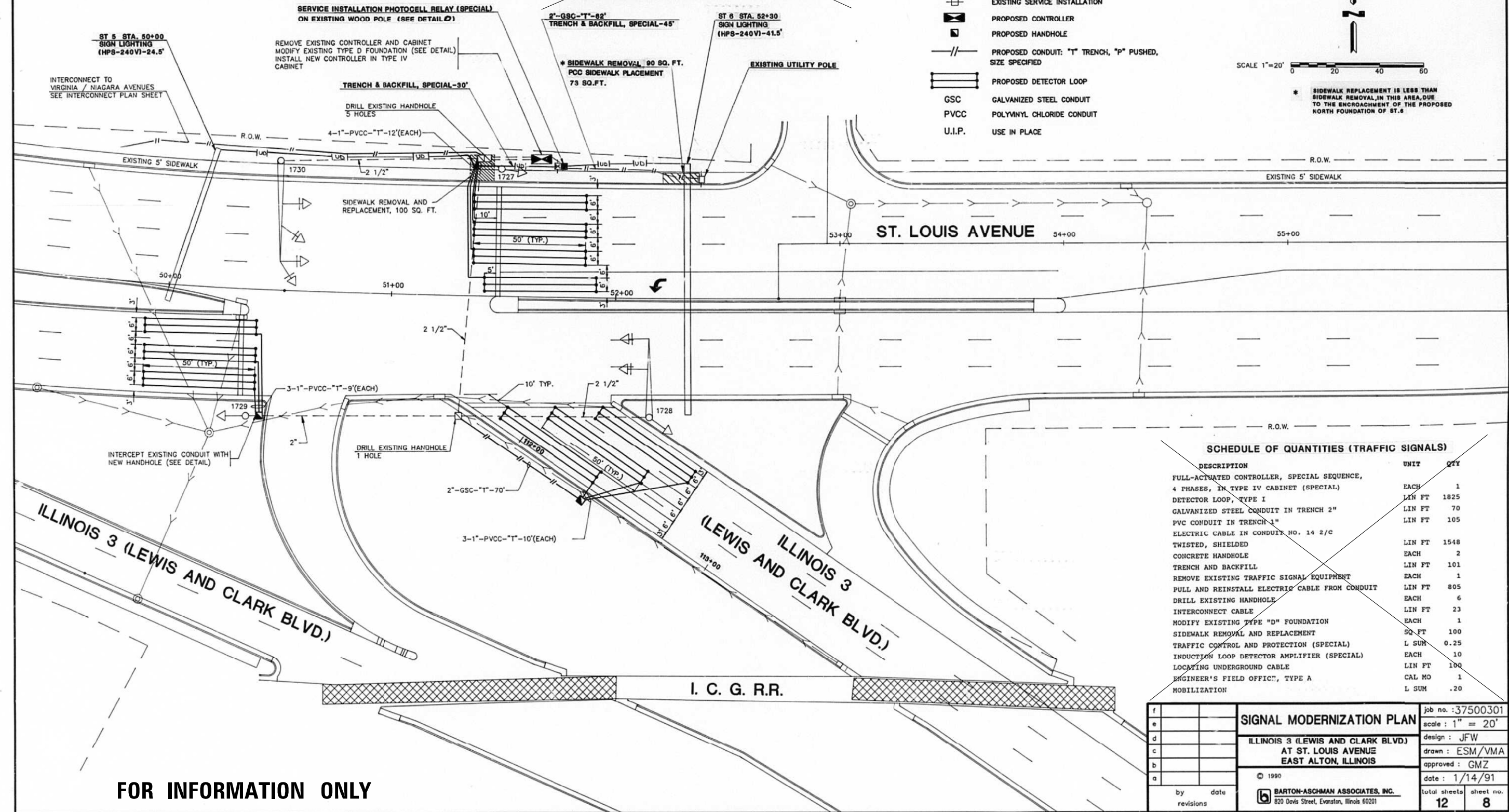
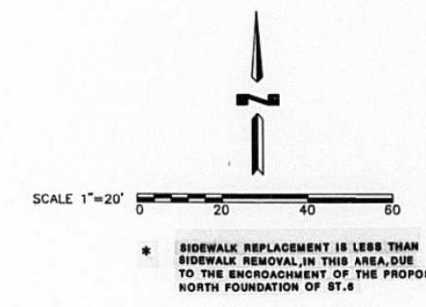
- PROPOSED SIGN TRUSS
- PROPOSED 2/C #6 INS. CONDUCTOR IN 1" UNIT DUCT IN TRENCH & #6 BARE COPPER BURIED IN SAME TRENCH
- PROPOSED SERVICE INSTALLATION PHOTOCELL RELAY (SPECIAL)

SCHEDULE OF QUANTITIES (SIGN LIGHTING)

DESCRIPTION	UNIT	QTY
SERVICE INSTALLATION PHOTOCELL RELAY (SPECIAL)	EACH	1
SIGN LIGHTING (HIGH PRESSURE SODIUM-240V)	LIN FT	98.0
UNIT DUCT, 2-800 VXL P #6, 1" POLYETHYLENE	LIN FT	130
BARE COPPER, 1/8 NO. 8	LIN FT	130
TRENCH & BACKFILL FOR ROADWAY LIGHTING	LIN FT	120
TRENCH & BACKFILL, SPECIAL	LIN FT	75
SIDEWALK REMOVAL & REPLACEMENT	SQ FT	100
GALVANIZED STEEL CONDUIT, IN TRENCH 2"	LIN FT	82
SIDEWALK REMOVAL	SQ. FT.	90
PORTLAND CEMENT CONC. SIDEWALK 4 INCH	SQ. FT.	73

SIGNAL PLAN LEGEND

- EXISTING SIGNAL POST
- EXISTING TRAFFIC SIGNAL MAST ARM
- EXISTING HANDHOLE
- EXISTING DETECTOR LOOP
- EXISTING CONDUIT
- EXISTING DOUBLE HANDHOLE
- EXISTING SERVICE INSTALLATION
- PROPOSED CONTROLLER
- PROPOSED HANDHOLE
- PROPOSED CONDUIT: "T" TRENCH, "P" PUSHED, SIZE SPECIFIED
- PROPOSED DETECTOR LOOP
- GALVANIZED STEEL CONDUIT
- POLYVINYL CHLORIDE CONDUIT
- USE IN PLACE



SCHEDULE OF QUANTITIES (TRAFFIC SIGNALS)

DESCRIPTION	UNIT	QTY
FULL-ACTUATED CONTROLLER, SPECIAL SEQUENCE, 4 PHASES, IN TYPE IV CABINET (SPECIAL)	EACH	1
DETECTOR LOOP, TYPE I	LIN FT	1825
GALVANIZED STEEL CONDUIT IN TRENCH 2"	LIN FT	70
PVC CONDUIT IN TRENCH 1"	LIN FT	105
ELECTRIC CABLE IN CONDUIT NO. 14 2/C TWISTED, SHIELDED	LIN FT	1548
CONCRETE HANDHOLE	EACH	2
TRENCH AND BACKFILL	LIN FT	101
REMOVE EXISTING TRAFFIC SIGNAL EQUIPMENT	EACH	1
PULL AND REINSTALL ELECTRIC CABLE FROM CONDUIT	LIN FT	805
DRILL EXISTING HANDHOLE	EACH	6
INTERCONNECT CABLE	LIN FT	23
MODIFY EXISTING TYPE "D" FOUNDATION	EACH	1
SIDEWALK REMOVAL AND REPLACEMENT	SQ FT	100
TRAFFIC CONTROL AND PROTECTION (SPECIAL)	L SUM	0.25
INDUCTION LOOP DETECTOR AMPLIFIER (SPECIAL)	EACH	10
LOCATING UNDERGROUND CABLE	LIN FT	100
ENGINEER'S FIELD OFFIC', TYPE A	CAL MO	1
MOBILIZATION	L SUM	.20

FOR INFORMATION ONLY

f				job no. :37500301
e				scale : 1" = 20'
d				design : JFW
c				drawn : ESM/VMA
b				approved : GMZ
a				date : 1/14/91
by date		revisions		total sheets
				12
				sheet no.
				8

SIGNAL MODERNIZATION PLAN
ILLINOIS 3 (LEWIS AND CLARK BLVD.)
AT ST. LOUIS AVENUE
EAST ALTON, ILLINOIS

© 1990
BARTON-ASCHMAN ASSOCIATES, INC.
 820 Davis Street, Evanston, Illinois 60201

USER NAME = hughesrd	DESIGNED - _____	REVISED - _____
PLOT SCALE = 40,0000 * / in.	DRAWN - _____	REVISED - _____
PLOT DATE = 2/8/2022	CHECKED - _____	REVISED - _____
	DATE - _____	REVISED - _____

STATE OF ILLINOIS
DEPARTMENT OF TRANSPORTATION

CONDUIT LOCATION DETAIL

SCALE: NTS SHEET 1 OF 1 SHEETS STA. _____ TO STA. _____

F.A.P. RTE.	SECTION	COUNTY	TOTAL SHEETS	SHEET NO.
789	201PP-1	MADISON	8	8
ILLINOIS			FED. AID PROJECT	
CONTRACT NO. 76P92				

MODEL: I:\MODEL\MAME FILE NAME: p:\pub\c...
 PROJECT: I:\PROJECTS\7692\CADD\DATA\CADD\CHANGES\7692-211-1-101.dwg
 DATE: 1/14/91