

STATE OF ILLINOIS  
DEPARTMENT OF TRANSPORTATION

F.A.I. RTE.	SECTION	COUNTY	TOTAL SHEETS	SHEET NO.
55	53(3,4,5,6)PP	LIVINGSTON	10	1
		ILLINOIS	CONTRACT NO. 66M46	

**INDEX OF SHEETS**

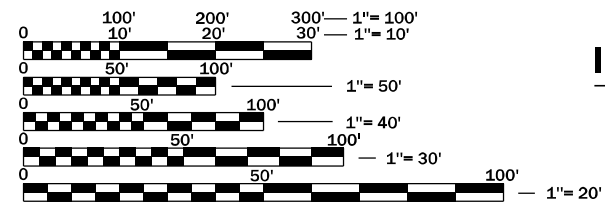
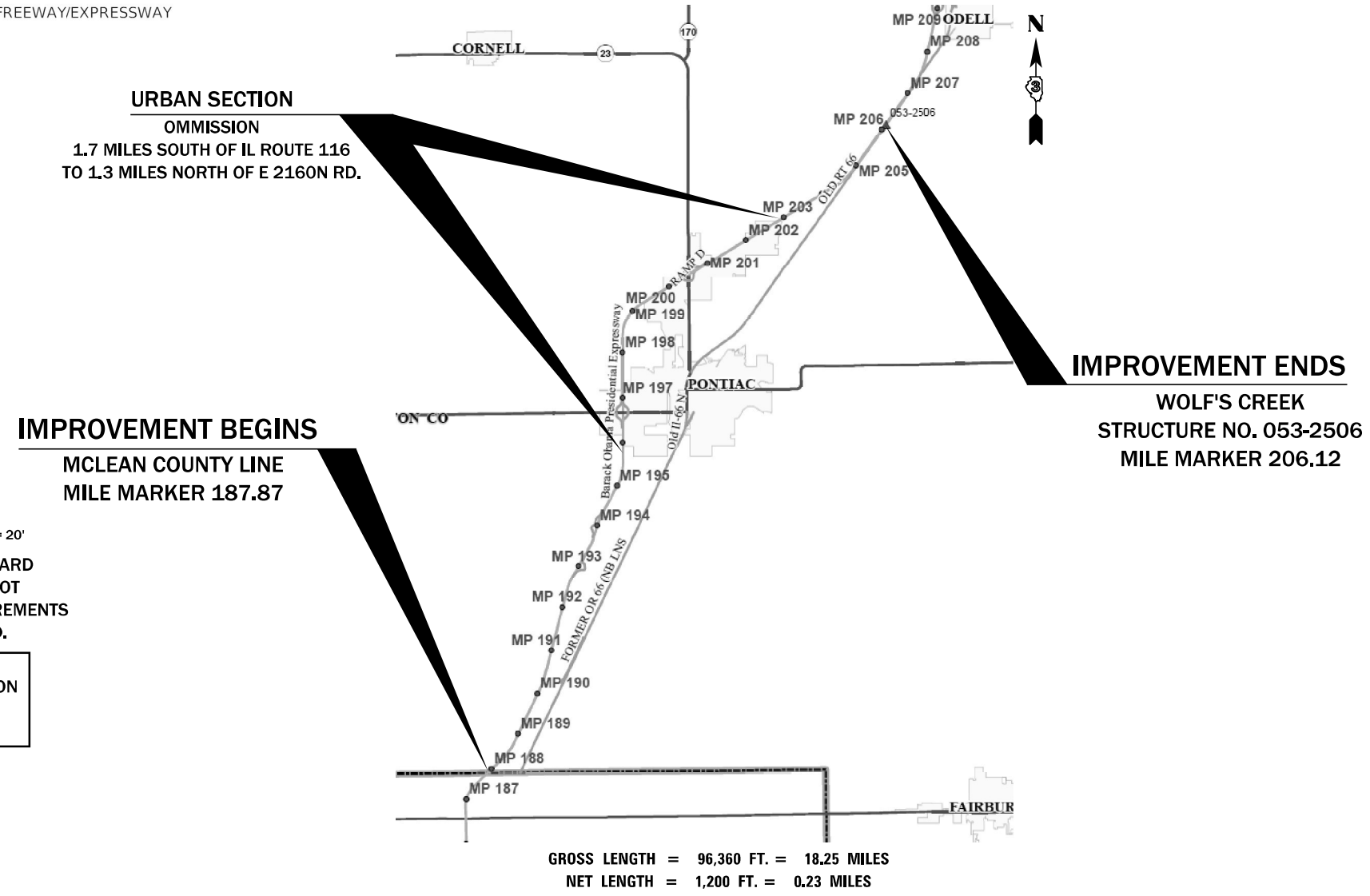
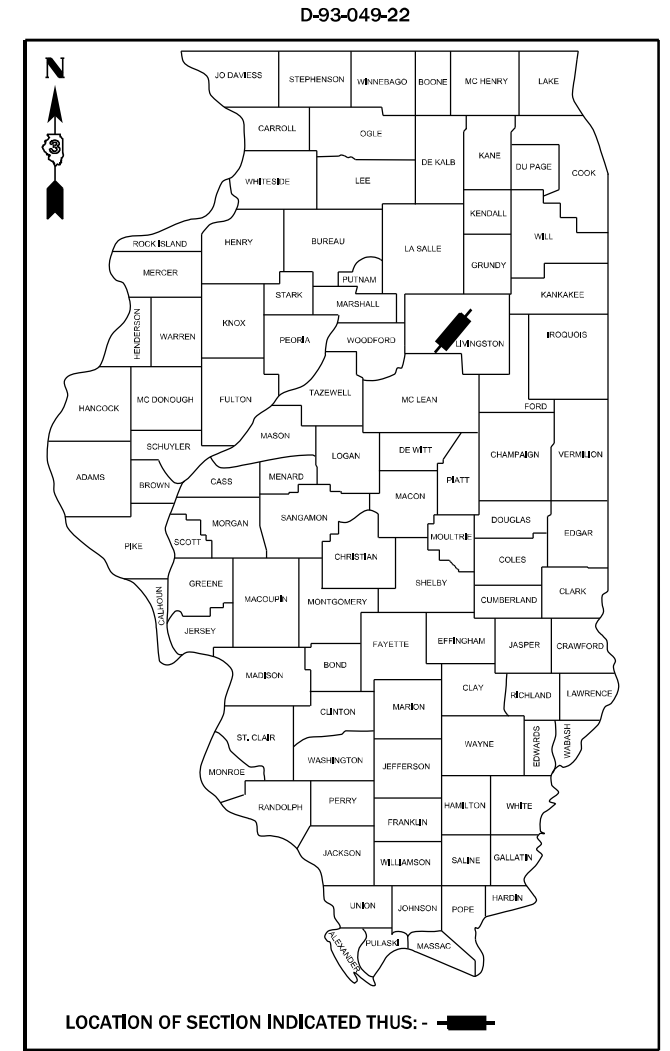
- 1. COVER SHEET
- 2. GENERAL NOTES
- 3. SUMMARY OF QUANTITIES
- 4. TYPICALS
- 5-6. SCHEDULES
- 7. TRAFFIC CONTROL AND PROTECTION, STANDARD 7C1400
- 8-9. CLASS A PATCHING DETAILS
- 10. TYPICAL PAVEMENT MARKING

**HIGHWAY STANDARDS**

- 000001-08 STANDARD SYMBOLS, ABBREVIATIONS AND PATTERNS
- 001001-02 AREAS OF REINFORCEMENT BARS
- 001006 DECIMAL OF AN INCH AND OF A FOOT
- 421001-03 BAR REINFORCEMENT FOR CRC PAVEMENT
- 421201-07 24' CRC PAVEMENT (WITH LUG SYSTEM)
- 701101-05 OFF-ROAD OPERATIONS, MULTILANE, 15' TO 24" FROM PAVEMENT EDGE
- 701106-02 OFF-ROAD OPERATIONS, MULTILANE, MORE THAN 15' AWAY
- 701401-13 LANE CLOSURE, FREEWAY/EXPRESSWAY
- 701426-09 LANE CLOSURE, MULTILANE INTERMITTENT OR MOVING OPERATION, FOR SPEEDS ≥ 45 MPH
- 701427-05 LANE CLOSURE, MULTILANE INTERMITTENT OR MOVING OPERATION, FOR SPEEDS ≤ 40 MPH
- 701428-01 TRAFFIC CONTROL, SETUP AND REMOVAL, FREEWAY/EXPRESSWAY
- 701901-08 TRAFFIC CONTROL DEVICES
- 704001-08 TEMPORARY CONCRETE BARRIER

**PROPOSED  
HIGHWAY PLANS**

**FAI ROUTE 55 (I-55)  
SECTION 53(3,4,5,6)PP  
CLASS A PAVEMENT PATCHING  
LIVINGSTON COUNTY  
C-93-072-22**



FULL SIZE PLANS HAVE BEEN PREPARED USING STANDARD ENGINEERING SCALES. REDUCED SIZED PLANS WILL NOT CONFORM TO STANDARD SCALES. IN MAKING MEASUREMENTS ON REDUCED PLANS, THE ABOVE SCALES MAY BE USED.

J.U.L.I.E.  
JOINT UTILITY LOCATION INFORMATION FOR EXCAVATION  
1-800-892-0123  
OR 811

**PROJECT ENGINEER YOGESH PATEL P.E.**  
**UNIT CHIEF RON WOODSHANK**  
DISTRICT 3 NO. (815) 434-6131  
CONTRACT NO. 66M46

**FUNCTIONAL CLASSIFICATION**  
RURAL INTERSTATE  
F.A.I. ROUTE 55 (-55)  
2019 ADT = 20500  
P.V. 71.3 % S.U. 3.3 % M.U. 25.4 %

STATE OF ILLINOIS  
DEPARTMENT OF TRANSPORTATION

SUBMITTED February 14, 2022

*David Almond*  
REGIONAL ENGINEER

March 25, 2022  
*[Signature]*  
ENGINEER OF DESIGN AND ENVIRONMENT

March 23, 2022  
*Stephen M. Smith*  
DIRECTOR OF HIGHWAYS PROJECT IMPLEMENTATION

**PRINTED BY THE AUTHORITY  
OF THE STATE OF ILLINOIS**

**GENERAL NOTES**

PLAN DIMENSIONS AND DETAILS RELATIVE TO EXISTING PLANS ARE SUBJECT TO NOMINAL CONSTRUCTION VARIATIONS. THE CONTRACTOR SHALL FIELD VERIFY EXISTING DIMENSIONS AND DETAILS AFFECTING NEW CONSTRUCTION AND MAKE NECESSARY APPROVED ADJUSTMENTS PRIOR TO CONSTRUCTION OR ORDERING OF MATERIALS. SUCH VARIATIONS SHALL NOT BE CAUSE FOR ADDITIONAL COMPENSATION FOR A CHANGE IN SCOPE OF WORK; HOWEVER, THE CONTRACTOR WILL BE PAID FOR THE QUANTITY ACTUALLY FURNISHED AT THE UNIT PRICE BID FOR THE WORK.

ALL EXCAVATED MATERIAL, WHICH INCLUDES DIGGING OR GRADING OF ANY SOIL OR FILL MATERIAL, WITH THE EXCEPTION OF AGGREGATE FILLS, MUST BE INCORPORATED WITHIN THE IDOT RIGHT OF WAY.

THE CONTRACTOR SHALL CONTACT JULIE AT LEAST 48 HOURS PRIOR TO EXCAVATION TO DETERMINE WHICH UTILITIES ARE IN THE AREA.

**COMMITMENTS**

STATE OF ILLINOIS  
DEPARTMENT OF TRANSPORTATION  
DISTRICT THREE  
AS BUILT INFORMATION

\_\_\_\_\_  
SUPERVISING CONSTRUCTION FIELD ENGINEER

\_\_\_\_\_  
RESIDENT ENGINEER / TECHNICIAN

START & END DATES  
OF CONSTRUCTION:

\_\_\_\_\_

INSPECTORS:

\_\_\_\_\_

\_\_\_\_\_

\_\_\_\_\_

STATE OF ILLINOIS  
DEPARTMENT OF TRANSPORTATION  
DISTRICT THREE

PREPARED BY: \_\_\_\_\_  
DISTRICT STUDIES & PLANS ENGINEER

DATE: \_\_\_\_\_

EXAMINED BY: \_\_\_\_\_  
DISTRICT CONSTRUCTION ENGINEER

\_\_\_\_\_  
DISTRICT MATERIALS ENGINEER

\_\_\_\_\_  
DISTRICT OPERATIONS ENGINEER

FILE NAME =	USER NAME = woodshank1	DESIGNED - EVAN MARINI	REVISED -
pw:\idot\pw\berkeley.com\PWIDOT\Documents\IDOT Office\District 3\Projects\ID366M43\CADData\ID366M43 - PLANS.dgn		DRAWN - EVAN MARINI	REVISED -
Default	PLOT SCALE = 100,0000' / in.	CHECKED - RON WOODSHANK	REVISED -
	PLOT DATE = 1/26/2022	DATE - 1/22/2019	REVISED -

**STATE OF ILLINOIS  
DEPARTMENT OF TRANSPORTATION**

**GENERAL NOTES**

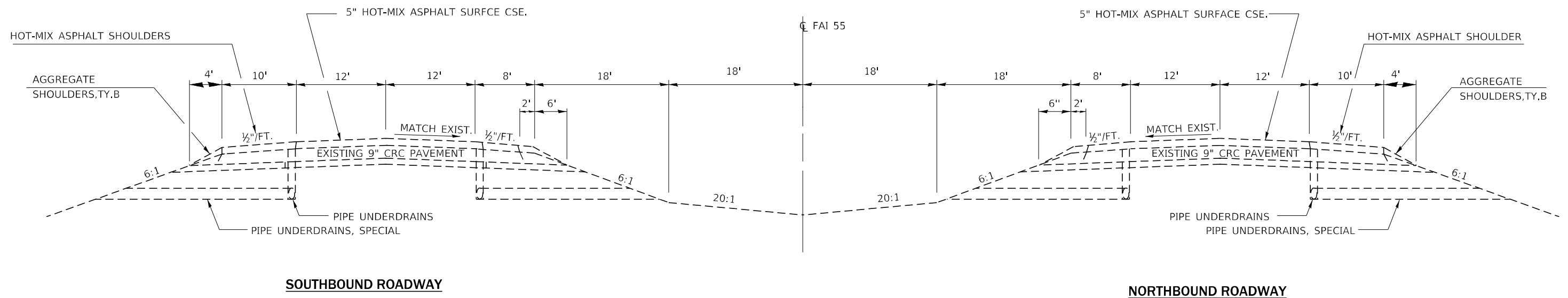
SCALE: SHEET 1 OF 1 SHEETS STA. TO STA.

F.A.I. RTE.	SECTION	COUNTY	TOTAL SHEETS	SHEET NO.
55	53(3,4,5,6)PP	LIVINGSTON	9	2
CONTRACT NO. 66M46				
ILLINOIS FED. AID PROJECT				

CODE NO.	ITEM	UNIT	TOTAL QUANTITY	CONSTRUCTION CODE	
				CONTRACT MAINTENANCE 100% STATE	ROADWAY 0006 RURAL
44200620	CLASS A PATCHES, TYPE II, 14 INCH	SQ YD	79		79
44200628	CLASS A PATCHES, TYPE IV, 14 INCH	SQ YD	1443		1443
44213000	PATCHING REINFORCEMENT	SQ YD	1522		1522
44213200	SAW CUTS	FOOT	3128		3128
44213204	TIE BARS 3/4"	EACH	1759		1759
67100100	MOBILIZATION	L SUM	1		1
70100800	TRAFFIC CONTROL AND PROTECTION, STANDARD 701401	L SUM	1		1
70103815	TRAFFIC CONTROL SURVEILLANCE	CAL DA	25		25
70107025	CHANGEABLE MESSAGE SIGN	CAL DA	28		28
* 78008210	POLYUREA PAVEMENT MARKING TYPE I - LINE 4"	FOOT	646		646
* 78008230	POLYUREA PAVEMENT MARKING TYPE I - LINE 6"	FOOT	360		360
X2700001	TEMPORARY RUMBLE STRIPS (SPECIAL)	EACH	16		16

\*= SPECIALTY ITEM

FILE NAME =	USER NAME = woodshank1	DESIGNED - EVAN MARINI	REVISED -	<b>STATE OF ILLINOIS DEPARTMENT OF TRANSPORTATION</b>	<b>SUMMARY OF QUANTITIES</b>				F.A.I. RTE.	SECTION	COUNTY	TOTAL SHEETS	SHEET NO.
pw:\idot\pw\berkeley.com\PWIDOT\Documents\IDOT Office\District 3\Projects\ID366M46\CADData\ID366M46-PLANS.dgn	DRAWN - EVAN MARINI	REVISED -	55						53(3,4,5,6)PP	LIVINGSTON	9	3	
Default	PLOT SCALE = 100,0000' / in.	CHECKED - RON WOODSHANK	REVISED -		CONTRACT NO. 66M46								
	PLOT DATE = 2/1/2022	DATE - 1/22/2019	REVISED -		SCALE:	SHEET 1	OF 1	SHEETS	STA.	TO STA.	ILLINOIS	FED. AID PROJECT	



**PROPOSED TYPICAL SECTION (F.A.I.55)**  
**MILE MARKER 187.87 - MILE MARKER 195.77**  
**MILE MARKER 197.02 - MILE MARKER 206.12**

FILE NAME =	USER NAME = woodshank1	DESIGNED - EVAN MARINI	REVISED -	<b>STATE OF ILLINOIS DEPARTMENT OF TRANSPORTATION</b>	<b>TYPICAL SECTIONS</b>			F.A.I. RTE.	SECTION	COUNTY	TOTAL SHEETS	SHEET NO.
pw:\idot\pw\berkeley.com\PWIDOT\Documents\IDOT Office\District 3\Projects\3\366M43\CADData\366M43 - PLANS.dwg	DRAWN - EVAN MARINI	REVISIONS -	55					53(3,4,5,6)PP	LIVINGSTON	9	3	
Default	PLOT SCALE = 100,0000' / in.	CHECKED - RON WOODSHANK	REVISIONS -		CONTRACT NO. 66M46			ILLINOIS FED. AID PROJECT				
	PLOT DATE = 1/26/2022	DATE - 1/22/2019	REVISIONS -		SCALE:	SHEET 1	OF 1	SHEETS	STA.	TO STA.		

**PATCHING SCHEDULE  
NORTHBOUND LANES**

LOCATION	PASSING LANE						DRIVING LANE					
	PATCH LENGTH	CLASS A PATCHING TYPE		PATCH REINFORCEMENT	SAW CUTS	TIE BARS	PATCH LENGTH	CLASS A PATCHING TYPE		PATCH REINFORCEMENT	SAW CUTS	TIE BARS
		II 14"	IV 14"					II 14"	IV 14"			
MILE MARKER	FEET	SQ YD	SQ YD	SQ YD	FOOT	EACH	FEET	SQ YD	SQ YD	SQ YD	FOOT	EACH
189.3							20		27	27	64	50
189.9							6	8		8	36	44
190.1							50		67	67	124	60
191.2	100		133	133	224	77						
192.4	10	13		13	44	44						
193.5	6	8		8	36	44	6	8		8	36	44
193.8	6	8		8	36	44						
194.8							6	8		8	36	44
205.4							10	13		13	44	44
205.6	100		133	133	224	77						
<b>TOTAL</b>	<b>222</b>	<b>29</b>	<b>266</b>	<b>295</b>	<b>564</b>	<b>286</b>	<b>98</b>	<b>37</b>	<b>94</b>	<b>131</b>	<b>340</b>	<b>286</b>

**PATCHING SCHEDULE  
SOUTHBOUND LANES**

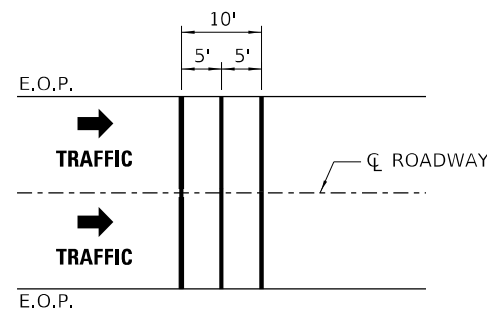
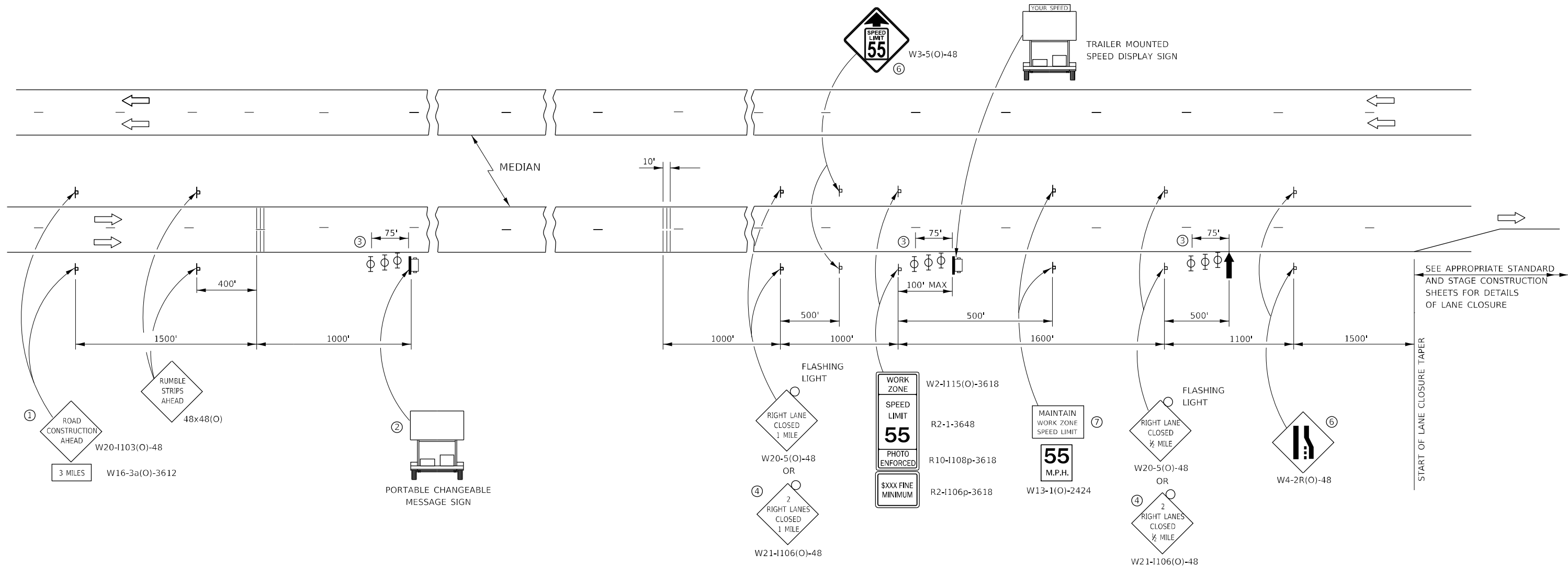
LOCATION	PASSING LANE						DRIVING LANE					
	PATCH LENGTH	CLASS A PATCHING TYPE		PATCH REINFORCEMENT	SAW CUTS	TIE BARS	PATCH LENGTH	CLASS A PATCHING TYPE		PATCH REINFORCEMENT	SAW CUTS	TIE BARS
		II 14"	IV 14"					II 14"	IV 14"			
MILE MARKER	FEET	SQ YD	SQ YD	SQ YD	FOOT	EACH	FEET	SQ YD	SQ YD	SQ YD	FOOT	EACH
206.9	10	13		13	44	44						
206.9	100		133	133	224	77						
206.8							50		67	67	124	60
206.0							150		200	200	324	94
205.8							6				36	44
205.8							50		67	67	124	60
205.7	20		27	27	64	50						
194.1							20		27	27	64	50
194.0	20		27	27	64	50						
193.8							6				36	44
193.8							10				44	44
193.2							50		67	67	124	60
192.5	150		200	200	324	94						
192.4							6				36	44
191.9							6				36	44
191.8	50		67	67	124	60						
191.6							50		67	67	124	60
190.9							6				36	44
189.9							30		40	40	84	54
189.5							20		27	27	64	50
189.4							50		67	67	124	60
<b>TOTAL</b>	<b>350</b>	<b>13</b>	<b>454</b>	<b>467</b>	<b>844</b>	<b>375</b>	<b>510</b>	<b>629</b>	<b>629</b>	<b>629</b>	<b>1380</b>	<b>812</b>

**SCHEDULE  
NORTHBOUND PAVEMENT MARKING**

LOCATION	POLYUREA PAVEMENT MARKING TYPE I LINE 4"		POLYUREA PAVEMENT MARKING TYPE I LINE 6"
	FOOT		FOOT
MILE MARKER	YELLOW	WHITE	WHITE
189.3		20	10
189.9		6	10
190.1		50	20
191.2	100		30
192.4	10		10
193.5	6	6	10
193.8	6		10
194.8		6	10
205.4		10	10
205.6	100		30
SUBTOTAL	222	98	
TOTAL	320		150

**SCHEDULE  
SOUTHBOUND PAVEMENT MARKING**

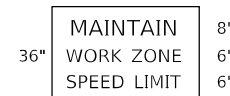
LOCATION	POLYUREA PAVEMENT MARKING TYPE I LINE 4"		POLYUREA PAVEMENT MARKING TYPE I LINE 6"
	FOOT		FOOT
MILE MARKER	YELLOW	WHITE	WHITE
206.9	10		10
206.9	100		30
206.8		50	20
206.0		150	40
205.8		6	10
205.8		50	20
205.7	20		10
194.1		20	10
194.0	20		10
193.8		6	10
193.8		10	10
193.2		50	20
192.5	150		40
192.4		6	10
191.9		6	10
191.8	50		20
191.6		50	20
190.9		6	10
189.9		30	10
189.5		20	10
189.4		50	20
SUBTOTAL	350	276	
TOTAL	626		350



**TEMPORARY RUMBLE STRIP (SPECIAL)**  
 FOR PAYMENT PURPOSES, EACH LANE OF TRAFFIC SHALL BE CONSIDERED "ONE EACH".

- ① THE ROAD CONSTRUCTION AHEAD SIGN SHALL BE LOCATED 3 MILES IN ADVANCE OF THE PROJECT LIMITS.
- ② TO BE PLACED IN THE MEDIAN WHEN FEASIBLE. THE MESSAGE BOARD SHALL BE USED TO DISPLAY STATUS OF LANES WITHIN THE PROJECT. THE PRIMARY MESSAGES SHALL BE:  
 "RIGHT LANE CLOSED" / " x MILES AHEAD"  
 "LEFT LANE CLOSED" / " x MILES AHEAD"  
 "ALL LANES OPEN"
- ③ THREE, TYPE II BARRICADES, DRUMS, OR VERTICAL BARRICADES AT 25' CENTERS.
- ④ THIS SIGN SHALL BE USED WHEN 2 LANES ARE CLOSED.
- ⑤ WHEN THE LEFT LANE IS CLOSED, SWITCH THESE TWO SIGNS AND THE DIRECTION OF THE MERGE ARROW.
- ⑥ THIS SIGN SHALL ONLY BE USED IF THE EXISTING SPEED LIMIT IS GREATER THAN 65 MPH.

- ⑦ 48"x36" FLUORESCENT ORANGE SIGN WITH BLACK LETTERS.



"MAINTAIN WORK ZONE SPEED LIMIT" SIGN SHALL NOT BE PAID FOR SEPARATELY BUT SHALL BE INCLUDED IN THIS TRAFFIC CONTROL STANDARD.

- ARROW BOARD
- PORTABLE CHANGEABLE MESSAGE SIGN
- SIGN
- TYPE II BARRICADE, DRUM, OR VERTICAL BARRICADE WITH MONODIRECTIONAL FLASHING LIGHT
- TEMPORARY RUMBLE STRIPS (SEE SPECIAL PROVISION)

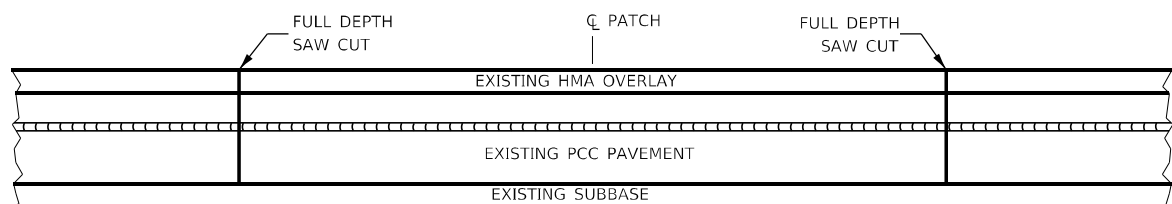
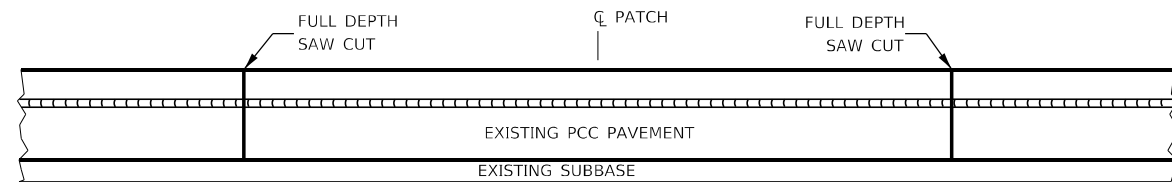
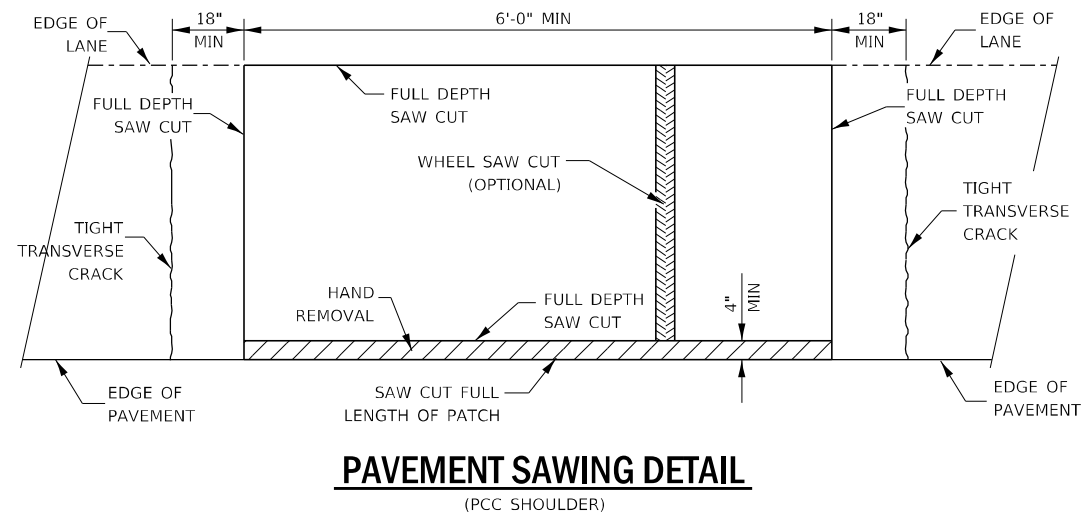
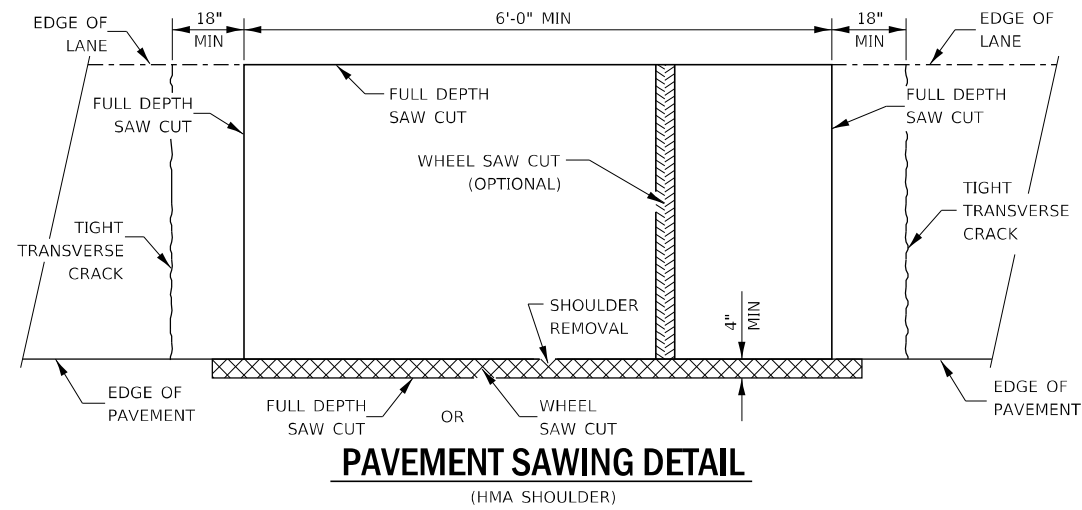
**GENERAL NOTE:**

THIS STANDARD IS USED WHERE AT ANY TIME A LANE IS CLOSED ON A FREEWAY/EXPRESSWAY.

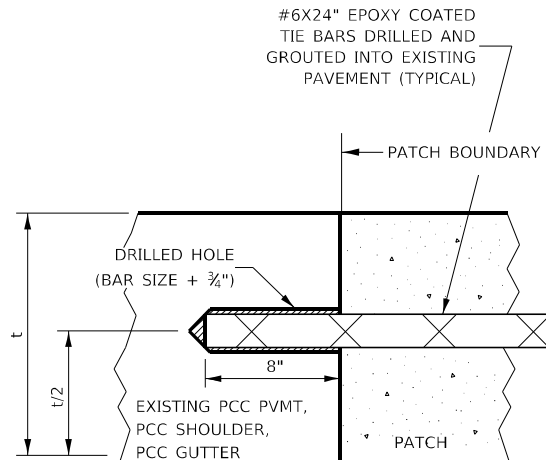
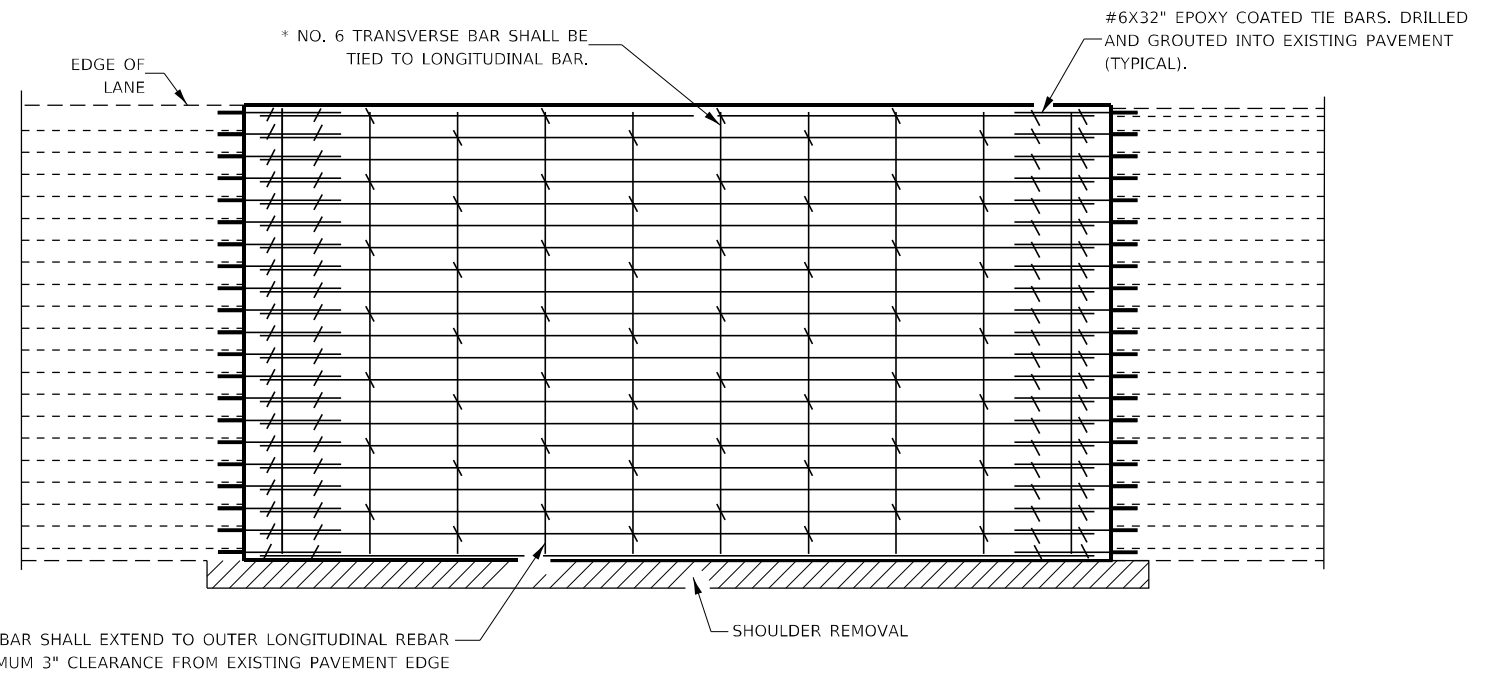
WHEN THE LEFT LANE IS CLOSED, LEFT LANE CLOSED SIGNS SHALL BE SUBSTITUTED FOR THE RIGHT LANE CLOSED SIGNS.

THE FIRST THREE SIGNS, RUMBLE STRIPS AND THE MESSAGE BOARD ARE STATIONARY. THE OTHER SIGNS AND ARROWBOARDS SHALL BE MOVED AS NECESSARY TO MAINTAIN THE REQUIRED DISTANCE FROM THE START OF THE LANE CLOSURE TAPER(S).

SEE SPECIAL PROVISIONS.



**PAVEMENT SAWING DETAIL FOR CLASS A PATCHING (CRC PAVEMENT)**



**LONGITUDINAL CONSTRUCTION JOINT**

PATCHES MORE THAN 20' IN LENGTH SHALL BE TIED TO ADJACENT PAVEMENT, PCC SHOULDERS OR PCC CURB AND GUTTER WITH #6x24" EPOXY COATED TIE BARS AT 36" CENTERS.

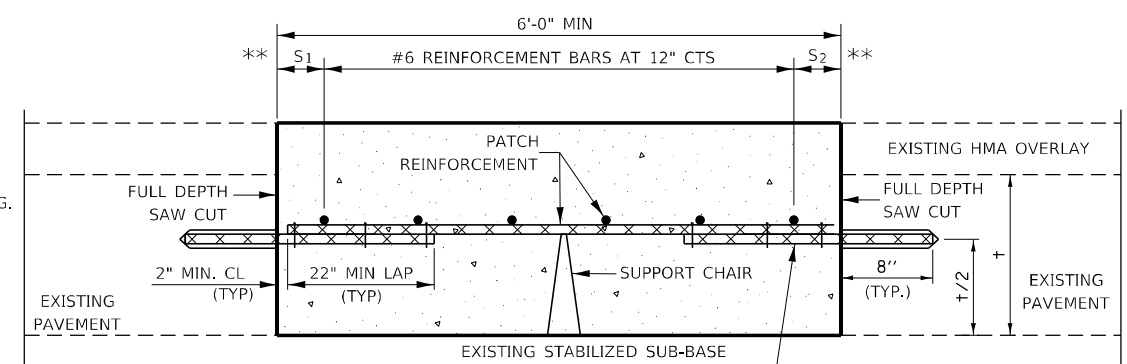
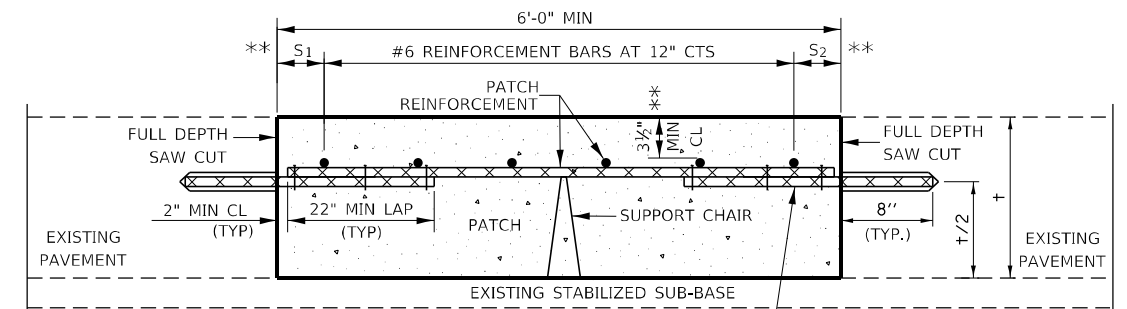
**NOTES:**

EXISTING LONGITUDINAL REINFORCEMENT #5 BARS AT 5 3/4" SPACING.

SPACING OF NEW LONGITUDINAL REINFORCEMENT AND NEW LONGITUDINAL TIE BARS SHALL MATCH SPACING OF EXISTING REINFORCEMENT AND SHALL BE TIED TOGETHER WITH A MINIMUM OF TWO TIES PER BAR.

\* EVERY THIRD INTERSECTION MUST BE TIED. WHEN THE MINIMUM CLEARANCE CANNOT BE OBTAINED WITH THE TRANSVERSE REBAR ON TOP, THEN THE TRANSVERSE REBAR SHALL BE TIED TO THE BOTTOM OF THE LONGITUDINAL REBAR.

\*\* VARIABLE: WHERE S<sub>1</sub> AND S<sub>2</sub> ARE 2 1/2" MIN. AND 12" MAX.



**PATCHING DETAIL FOR CLASS A PATCHING (CRC PAVEMENT)**

FILE NAME =	USER NAME = woodshank1	DESIGNED - EVAN MARINI	REVISED -
pw:\ltdot-pw\berkeley.com\PWIDOT\Documents\IDOT Office\District 3\Projects\ID386M43\CADData\ID386M43 - PLANS.dwg		DRAWN - EVAN MARINI	REVISED -
Default	PLOT SCALE = 100,0000 / 1in.	CHECKED - RON WOODSHANK	REVISED -
	PLOT DATE = 1/26/2022	DATE - 1/22/2019	REVISED -

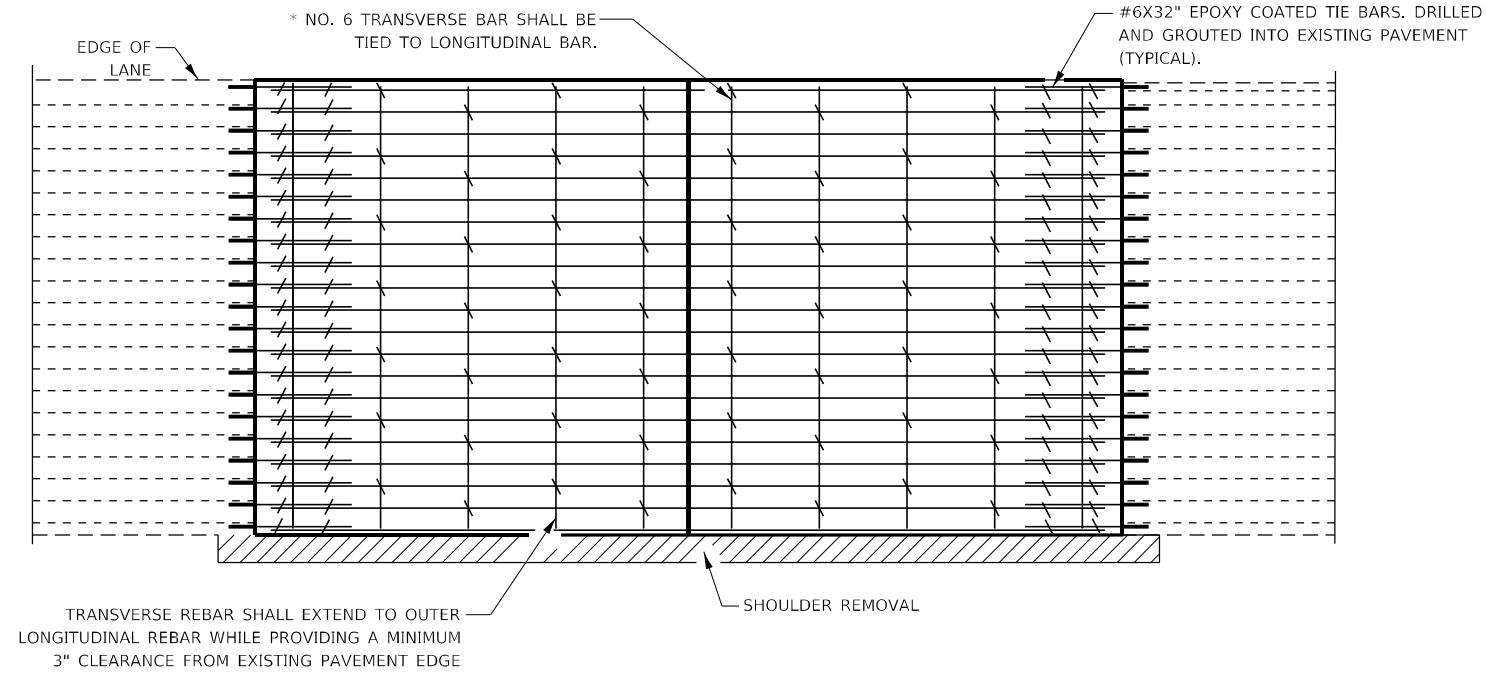
STATE OF ILLINOIS  
DEPARTMENT OF TRANSPORTATION

CLASS A PATCHING DETAILS

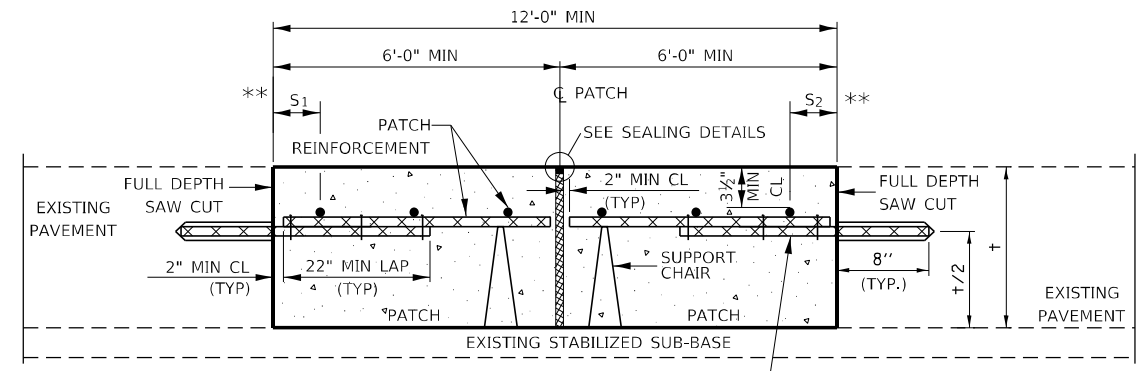
SCALE: SHEET 1 OF 2 SHEETS STA. TO STA.

F.A.I. RTE.	SECTION	COUNTY	TOTAL SHEETS	SHEET NO.
55	53(3,4,5,6)PP	LIVINGSTON	9	7
CONTRACT NO. 66M46				
ILLINOIS FED. AID PROJECT				

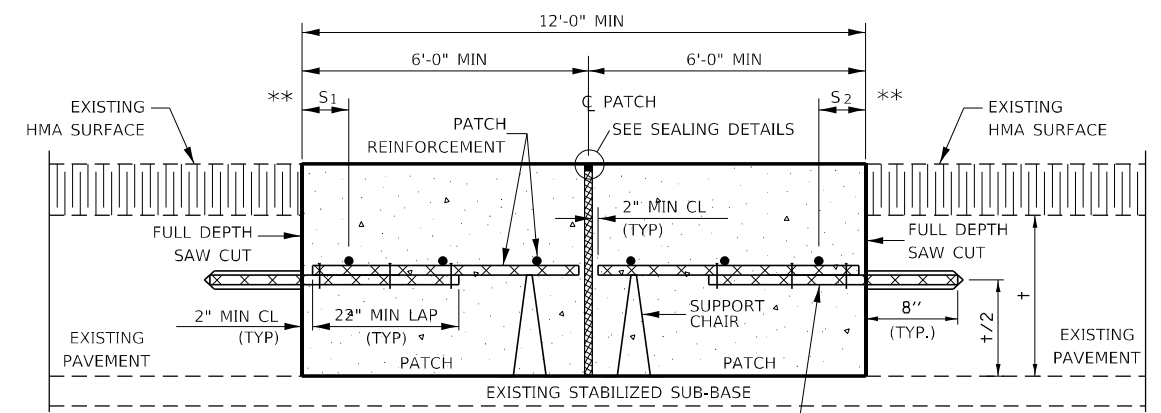




**PAVEMENT REINFORCEMENT DETAIL**

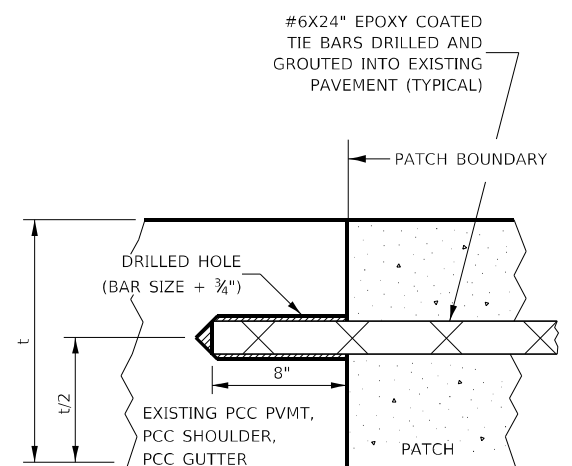


**WITHOUT HMA OVERLAY**



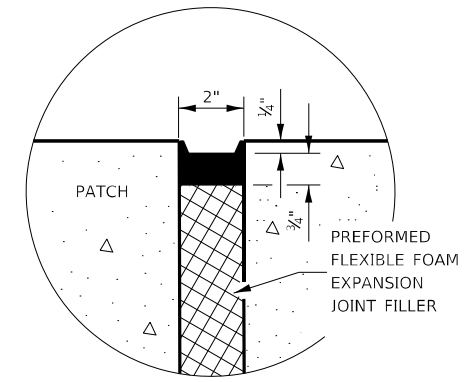
**WITH HMA OVERLAY**

**CLASS A PATCH WITH EXPANSION JOINT**

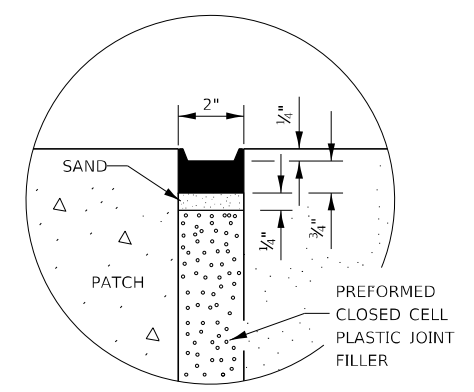


**LONGITUDINAL CONSTRUCTION JOINT**

PATCHES MORE THAN 20' IN LENGTH SHALL BE TIED TO ADJACENT PAVEMENT, PCC SHOULDERS OR PCC CURB AND GUTTER WITH #6x24" EPOXY COATED TIE BARS AT 36" CENTERS.



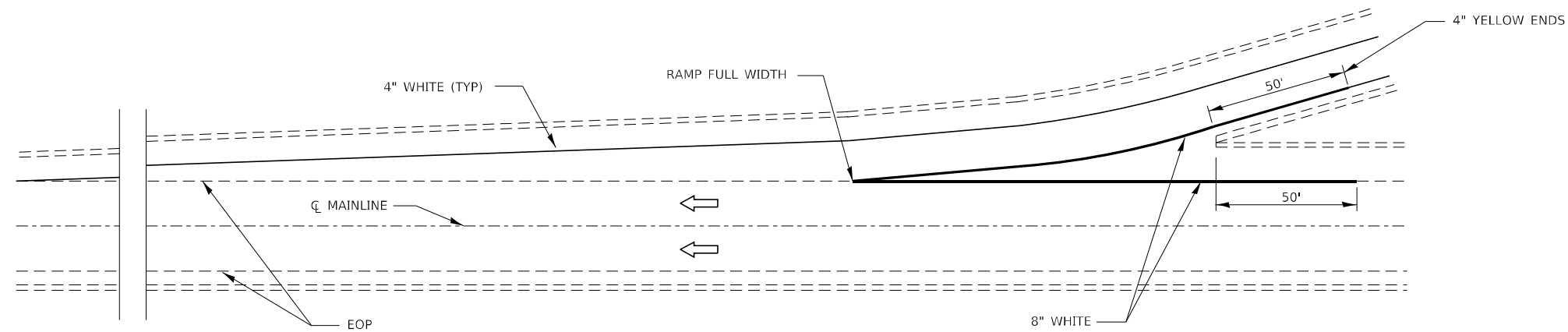
**SEALING DETAIL**



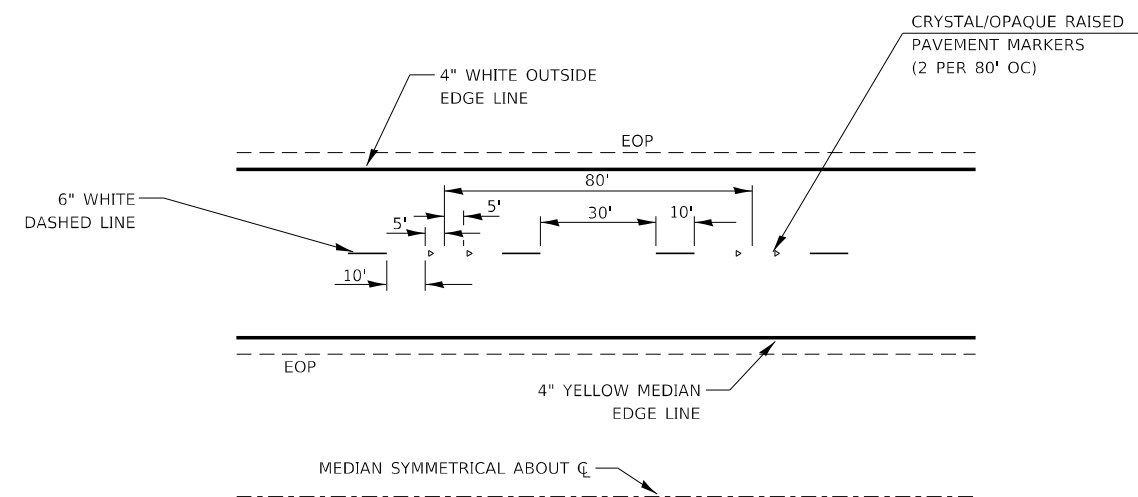
**SEALING DETAIL**

- NOTES:**
- ✦ EXISTING LONGITUDINAL REINFORCEMENT SPACING; ±6".
  - SPACING OF NEW LONGITUDINAL REINFORCEMENT AND NEW LONGITUDINAL TIE BARS SHALL MATCH SPACING OF EXISTING REINFORCEMENT AND SHALL BE TIED TOGETHER WITH A MINIMUM OF TWO TIES PER BAR.
  - \* EVERY THIRD INTERSECTION MUST BE TIED. WHEN THE MINIMUM CLEARANCE CANNOT BE OBTAINED WITH THE TRANSVERSE REBAR ON TOP, THEN THE TRANSVERSE REBAR SHALL BE TIED TO THE BOTTOM OF THE LONGITUDINAL REBAR.
  - \*\* VARIABLE: WHERE S<sub>1</sub> AND S<sub>2</sub> ARE 2½" MIN. AND 12" MAX.

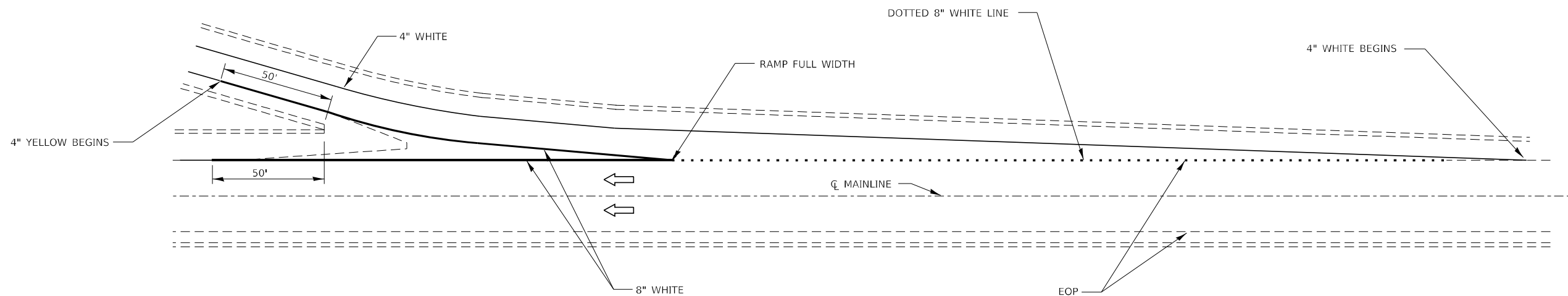
FILE NAME =	USER NAME = woodshank1	DESIGNED - EVAN MARINI	REVISED -	<b>STATE OF ILLINOIS DEPARTMENT OF TRANSPORTATION</b>	<b>CLASS A PATCHING DETAILS</b>			F.A.I. RTE.	SECTION	COUNTY	TOTAL SHEETS	SHEET NO.
pw:\idot-pw\berkeley.com\PWIDOT\Documents\IDOT Office\District 3\Projects\ID386M43\CADData\ID386M43 - PLANS.dwg	DRAWN - EVAN MARINI	REVISIONS -	55					53(3,4,5,6)PP	LIVINGSTON	9	8	
Default	PLOT SCALE = 100,0000 / 1in.	CHECKED - RON WOODSHANK	REVISIONS -		CONTRACT NO. 66M46							
	PLOT DATE = 1/26/2022	DATE - 1/22/2019	REVISIONS -		SCALE:	SHEET 2	OF 2	SHEETS	STA.	TO STA.	ILLINOIS	FED. AID PROJECT



**TYPICAL PAVEMENT MARKING FOR ENTRANCE RAMP TERMINALS**



**TYPICAL PAVEMENT MARKINGS**



**TYPICAL PAVEMENT MARKINGS FOR EXIT RAMP TERMINALS**

FILE NAME =	USER NAME = woodshank1	DESIGNED - EVAN MARINI	REVISED -	<b>STATE OF ILLINOIS DEPARTMENT OF TRANSPORTATION</b>	<b>TYPICAL PAVEMENT MARKING DETAILS</b>			F.A.I. RTE.	SECTION	COUNTY	TOTAL SHEETS	SHEET NO.
pw:\idot\pw\berkeley.com\PWIDOT\Documents\IDOT Office\District 3\Projects\ID366M43\CADData\ID366M43 - PLANS.dwg	DRAWN - EVAN MARINI	REVISED -	55					53(3,4,5,6)PP	LIVINGSTON	9	9	
Default	PLOT SCALE = 100,0000' / in.	CHECKED - RON WOODSHANK	REVISED -		CONTRACT NO. 66M46							
	PLOT DATE = 1/26/2022	DATE - 1/22/2019	REVISED -		SCALE:	SHEET 1 OF 1 SHEETS	STA.	TO STA.	ILLINOIS FED. AID PROJECT			