

CONSTRUCTION CODE
80% FED
20% STATE

CODE NO.	ITEM	UNIT	TOTAL QUANTITY	ROADWAY	BRIDGE	BRIDGE	BRIDGE	BRIDGE	BRIDGE
				0004	0004	0004	0004	0004	0004
				URBAN	SN 049-0021	SN 049-D012	SN 049-D015	SN 049-D011	SN 049-D014
20201200	REMOVAL AND DISPOSAL OF UNSUITABLE MATERIAL	CU YD	379		379				
21101625	TOPSOIL FURNISH AND PLACE, 6"	SQ YD	2460	2460					
25000210	SEEDING, CLASS 2A	ACRE	0.06	0.06					
25100630	EROSION CONTROL BLANKET	SQ YD	2469	2469					
28000250	TEMPORARY EROSION CONTROL SEEDING	POUND	51	51					
28000305	TEMPORARY DITCH CHECKS	FOOT	30	30					
28000400	PERIMETER EROSION BARRIER	FOOT	6535	6535					
28001100	TEMPORARY EROSION CONTROL BLANKET	SQ YD	2469	2469					
28100101	STONE RIPRAP, CLASS A1	SQ YD	15	15					
28100105	STONE RIPRAP, CLASS A3	SQ YD	122		122				
28200200	FILTER FABRIC	SQ YD	137	15	122				
31101200	SUBBASE GRANULAR MATERIAL, TYPE B 4"	SQ YD	2677	2677					
② 40603080	HOT-MIX ASPHALT BINDER COURSE, 1L-19.0, N70	TON	1200	1200					
② 40602985	HOT-MIX ASPHALT BINDER COURSE, 1L-9.5, N70	TON	1200	1200					
③ 44004250	PAVED SHOULDER REMOVAL	SQ YD	2677	2677					
40604062	HOT-MIX ASPHALT SURFACE COURSE, 1L-9.5, MIX "D", N70	TON	300	300					
50300225	CONCRETE STRUCTURES	CU YD	9.5		9.5				

* SPECIALTY ITEMS

MODEL: SDO_1
FILE NAME: G:\Engineering\LiveProjects\2005 IDOT DURWO 5 - 62N23\CADD\CADD Sheets\Civil\162N23 - sht - SDO.dgn



USER NAME = j.davis	DESIGNED - JD	REVISED -
	DRAWN - JD	REVISED -
PLOT SCALE = 2.0000' / in.	CHECKED - JMT	REVISED -
PLOT DATE = 2/4/2022	DATE - 01/21/2022	REVISED -

**STATE OF ILLINOIS
DEPARTMENT OF TRANSPORTATION**

**SUMMARY OF QUANTITIES - I
US 12 /IL 59 AT FISH CREEK**

SCALE: SHEET OF SHEETS STA. TO STA.

F.A.P. RTE.	SECTION	COUNTY	TOTAL SHEETS	SHEET NO.
334	2020-251-BR	LAKE	37	3
CONTRACT NO. 62N23			ILLINOIS FED. AID PROJECT 1MVI(349)	

③ REVISED SHEET 4/20/2022

② REVISED SHEET 4/11/2022

MODEL: SDO_2
 FILE: \\miller-gi-engineering\live\projects\2005\DOT\DUAR\WO 5 - 62N23\CADD\CADD Sheets\Civil\162N23 - sht - SDO.dgn

CODE NO.	ITEM	UNIT	TOTAL QUANTITY	CONSTRUCTION CODE					
				80% FED 20% STATE					
				ROADWAY 0004	BRIDGE 0004	BRIDGE 0004	BRIDGE 0004	BRIDGE 0004	BRIDGE 0004
				URBAN	SN 049-0021	SN 049-D012	SN 049-D015	SN 049-D011	SN 049-D014
50300260	BRIDGE DECK GROOVING	SQ YD	4416			1004	603	1577	1232
50800205	REINFORCEMENT BARS, EPOXY COATED	POUND	2510		2510				
52000030	PREFORMED JOINT SEAL 2 1/2"	FOOT	1440			320	200	520	400
542C0265	PIPE CULVERTS, CLASS C, TYPE 1 60"	FOOT	96		96				
60920060	PIPE CULVERTS TO BE CLEANED 60"	FOOT	116		116				
*63100045	TRAFFIC BARRIER TERMINAL, TYPE 2	EACH	1	1					
63200310	GUARDRAIL REMOVAL	FOOT	13	13					
*66900200	NON-SPECIAL WASTE DISPOSAL	CU YD	295	295					
*66900530	SOIL DISPOSAL ANALYSIS	EACH	2	2					
*66901001	REGULATED SUBSTANCES PRE-CONSTRUCTION PLAN	L SUM	1	1					
*66901003	REGULATED SUBSTANCES FINAL CONSTRUCTION REPORT	L SUM	1	1					
*66901006	REGULATED SUBSTANCES MONITORING	CAL DA	8	8					
67100100	MOBILIZATION	L SUM	1	1					
70107025	CHANGEABLE MESSAGE SIGN	CAL DA	56	56					
70300100	SHORT TERM PAVEMENT MARKING	FOOT	1172	1172					

3

* SPECIALTY ITEMS



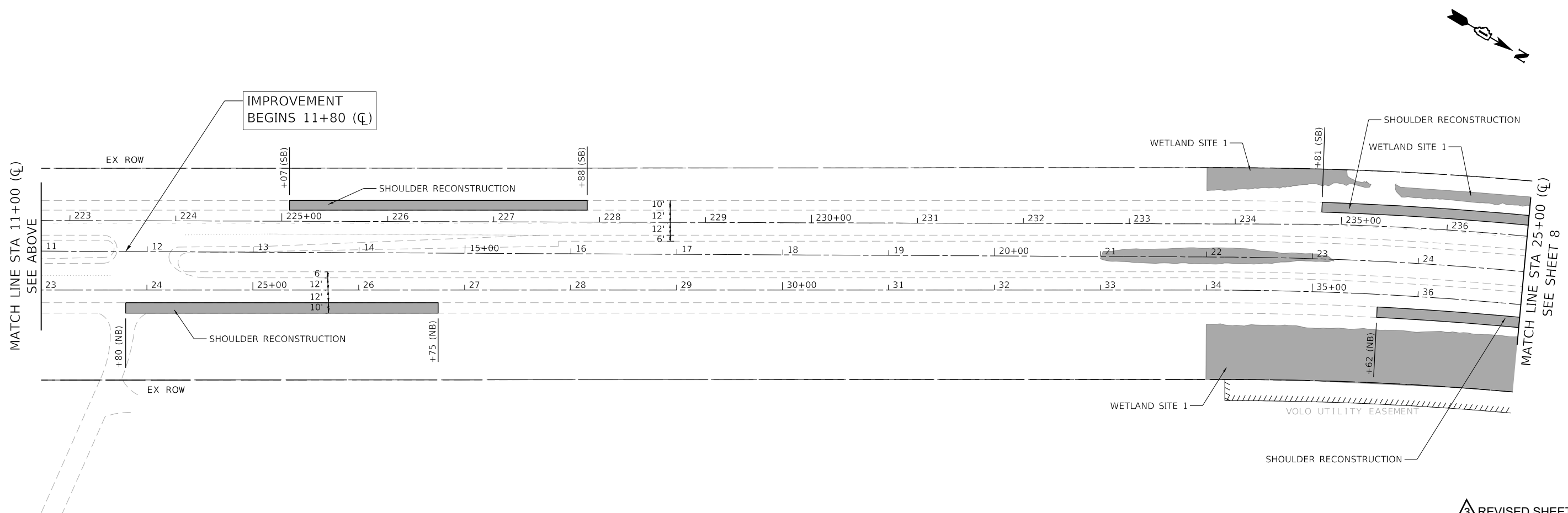
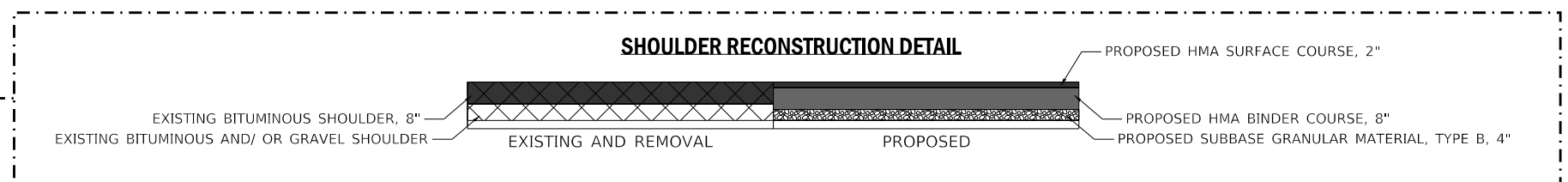
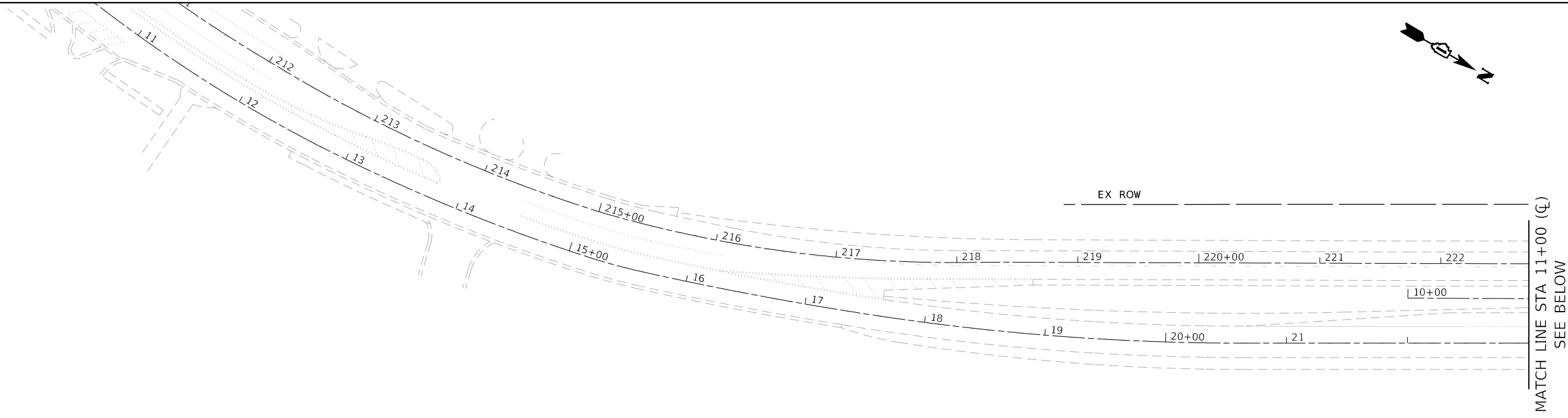
USER NAME = jdavis	DESIGNED - JD	REVISED -
	DRAWN - JD	REVISED -
PLOT SCALE = 2.0000' / in.	CHECKED - JMT	REVISED -
PLOT DATE = 2/4/2022	DATE - 01/21/2022	REVISED -

STATE OF ILLINOIS
 DEPARTMENT OF TRANSPORTATION

SUMMARY OF QUANTITIES - II
 US 12 /IL 59 AT FISH CREEK

SCALE: SHEET OF SHEETS STA. TO STA.

3 REVISED SHEET 4/20/2022			
F.A.P. RTE.	SECTION	COUNTY	TOTAL SHEETS
334	2020-251-BR	LAKE	37
		CONTRACT NO.	62N23
ILLINOIS FED. AID PROJECT 1MVI(349)			



MODEL: Default
 FILE: \\mlls01\c:\Engineering\Live\Projects\202005_IDOT_DURAWO_5_621223\CADD\CADD_Sheets\CHUD\621223_sht_01plan_1.dgn



USER NAME = jdavis	DESIGNED - JD	REVISED - 04/22/2022 JJD
PLOT SCALE = 100,0000' / in.	DRAWN - JD	REVISED -
PLOT DATE = 4/19/2022	CHECKED - JMT	REVISED -
	DATE - 01/21/2022	REVISED -

**STATE OF ILLINOIS
 DEPARTMENT OF TRANSPORTATION**

**EXISTING AND PROPOSED - I
 US 12 /IL 59 AT FISH CREEK**

SCALE: 1"=50" SHEET 1 OF 2 SHEETS STA. TO STA.

F.A.P. RTE. 334		SECTION 2020-251-BR	COUNTY LAKE	TOTAL SHEETS	SHEET NO.
				37	7
				CONTRACT NO. 62N23	
		ILLINOIS FED. AID PROJECT 1MVI(349)			

3 REVISIED SHEET 4/20/2022

Benchmark: Top of NW wingwall Elev. 766.45'

Existing Structures: Concrete Slab Bridge S.N. 049-0021 was constructed in 1928 under Section 106B-1. The existing structure is a single span, 15.5' max. reinforced concrete slab supported by closed reinforced concrete abutments on reinforced concrete bents with piles. The bridge length is 22'-0" back-to-back of abutments and width is 46'-2" out-to-out of deck.

Land Bridge No. 2 Northbound S.N. 049-D012 was originally constructed in 1962 under Section 106-1 and widened in 1991 under Section 106(1&2)RS-84. The existing structure is a 7 unit, 22 span, 11" reinforced concrete slab on reinforced concrete bents with piles. The land bridge length is ±565'-0" and width is 40'-0".

Land Bridge No. 2 Southbound S.N. 049-D015 was originally constructed in 1962 under Section 106-1 and widened in 1991 under Section 106(1&2)RS-84. The existing structure is a 4 unit, 13 span, 11" reinforced concrete slab on reinforced concrete bents with piles. The land bridge length is ±339'-0" and width is 40'-0".

Land Bridge No. 3 Northbound S.N. 049-D011 was originally constructed in 1962 under Section 106-1 and widened in 1991 under Section 106(1&2)RS-84. The existing structure is a 13 unit, 35 span, 11" reinforced concrete slab on reinforced concrete bents with piles. The land bridge length is ±887'-0" and width is 40'-0".

Land Bridge No. 3 Southbound S.N. 049-D014 was originally constructed in 1962 under Section 106-1 and widened in 1991 under Section 106(1&2)RS-84. The existing structure is a 9 unit, 27 span, 11" reinforced concrete slab on reinforced concrete bents with piles. The land bridge length is ±693'-0" and width is 40'-0".

The structures are to be repaired as shown, and one lane of traffic will be maintained using staged construction.

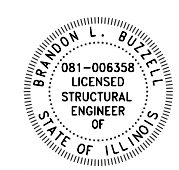
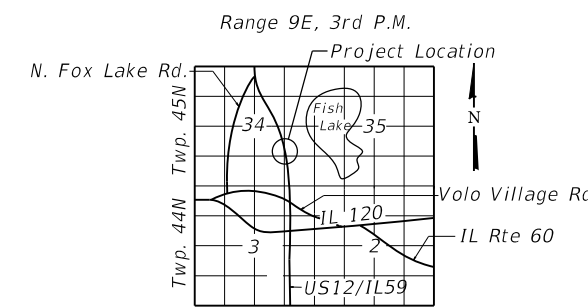
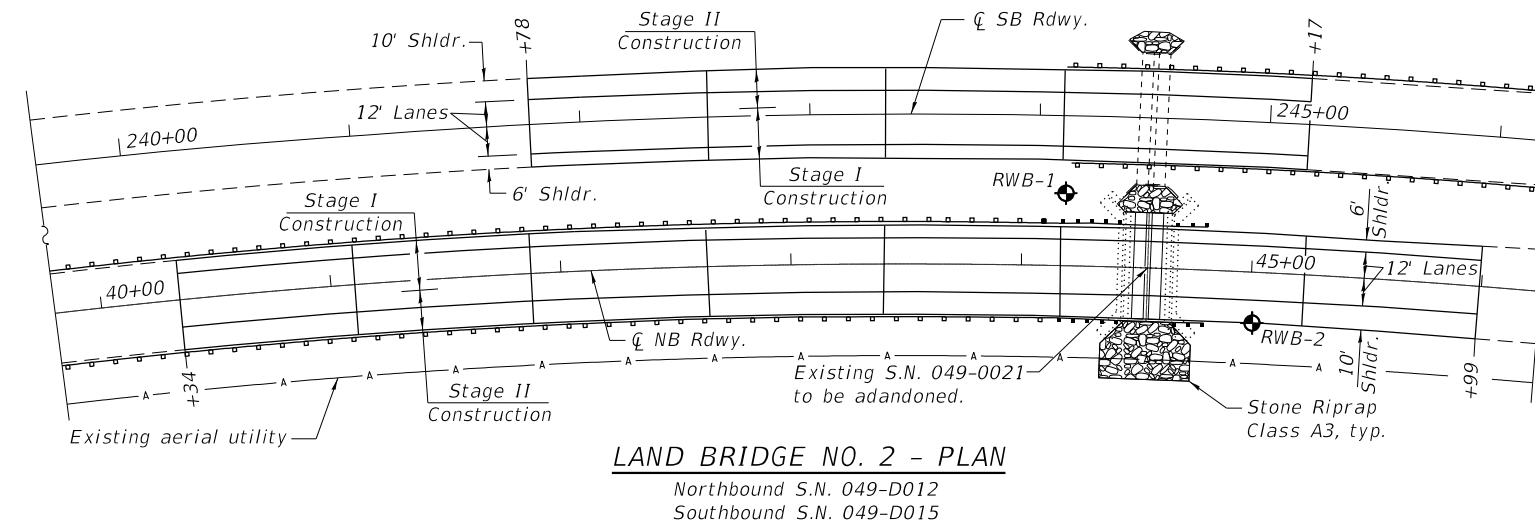
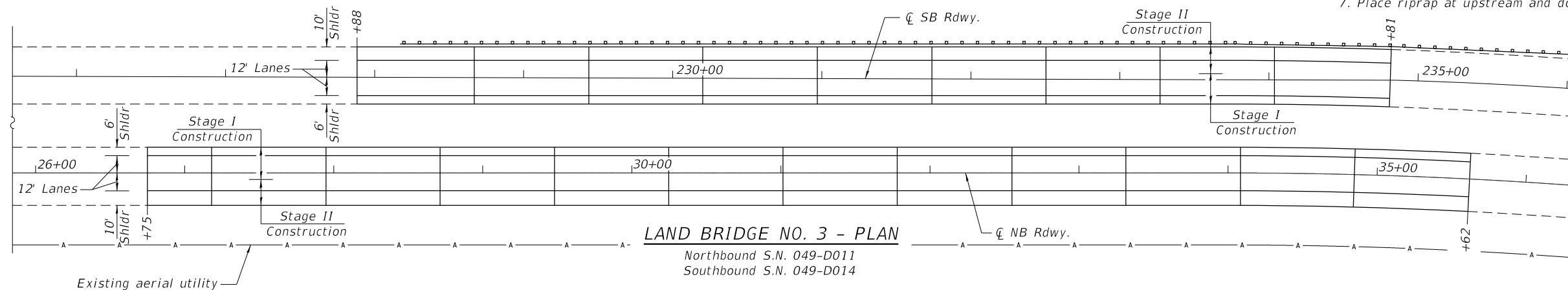
Salvage: N/A.

PROPOSED SCOPE OF WORK – LAND BRIDGES

1. Scarify decks 2 1/4".
2. Scarify additional depth as needed (see Sheet 5 of 9).
3. Perform partial depth deck slab repairs.
4. Perform Partial Depth Patching (Special) as needed.
5. Place 2 1/2" Latex Concrete Overlay.
6. Remove and replace preformed joint seals.
7. Diamond grinding and longitudinal grooving of overlay on lanes (up to 1/4" may be ground off the overlay).
8. Bridge Deck Grooving on shoulders.

PROPOSED SCOPE OF WORK – S.N. 049-0021

1. Repair existing wingwalls.
2. Remove & dispose of unsuitable material.
3. Install two 60" dia. polyethylene pipes.
4. Place Lightweight Cellular Concrete Fill.
5. Construct concrete facing.
6. Regrade and clean existing culvert.
7. Place riprap at upstream and downstream ends.



DATE: 12/8/2021
LICENSE EXPIRES 11/30/22

GENERAL PLAN AND ELEVATION
US ROUTE 12 / IL. ROUTE 59 AT FISH CREEK
F.A.P. RT. 334 SEC. 2020-251-BR
LAKE COUNTY
STATION 44+54.85
STRUCTURE NO. 049-D011(NB) & 049-D014(SB)
STRUCTURE NO. 049-D012(NB) & 049-D015(SB)
STRUCTURE NO. 049-0021 (TO BE ABANDONED)

3 REVISED SHEET 4/20/2022

MODEL: Default
FILE NAME: I:\Crystal Lake\LDOT\200777-Accurate Var Ph I\CAD\W05 US12 IL5911 - General Plan.dgn
4/19/2022 3:05:27 PM

BAXTER & WOODMAN Consulting Engineers	USER NAME = 611blb	DESIGNED - BAB	REVISED - 3 4/19/22 BLB
	PLOT SCALE = 0:2,0000 " = 1" / in.	DRAWN - BAB	REVISED -
	PLOT DATE = 4/19/2022	CHECKED - BLB	REVISED -
		DATE - 1/21/2022	REVISED -

STATE OF ILLINOIS
DEPARTMENT OF TRANSPORTATION

GENERAL PLAN
US 12 / IL 59 AT FISH CREEK
SHEET 1 OF 9 SHEETS

F.A.P. RTE.	SECTION	COUNTY	TOTAL SHEETS	SHEET NO.
334	2020-251-BR	LAKE	37	23
CONTRACT NO. 62N23				
ILLINOIS FED. AID PROJECT				

GENERAL NOTES

Reinforcement bars designated (E) shall be epoxy coated.

Plan dimensions and details relative to existing plans are subject to nominal construction variations. The Contractor shall field verify existing dimensions and details affecting new construction and make necessary approved adjustments prior to construction or ordering of materials. Such variations shall not be cause for additional compensation for a change in scope of the work, however, the Contractor will be paid for the quantity actually furnished at the unit price bid for the work.

Layout of riprap may be varied to suit ground conditions in the field as directed by the Engineer.

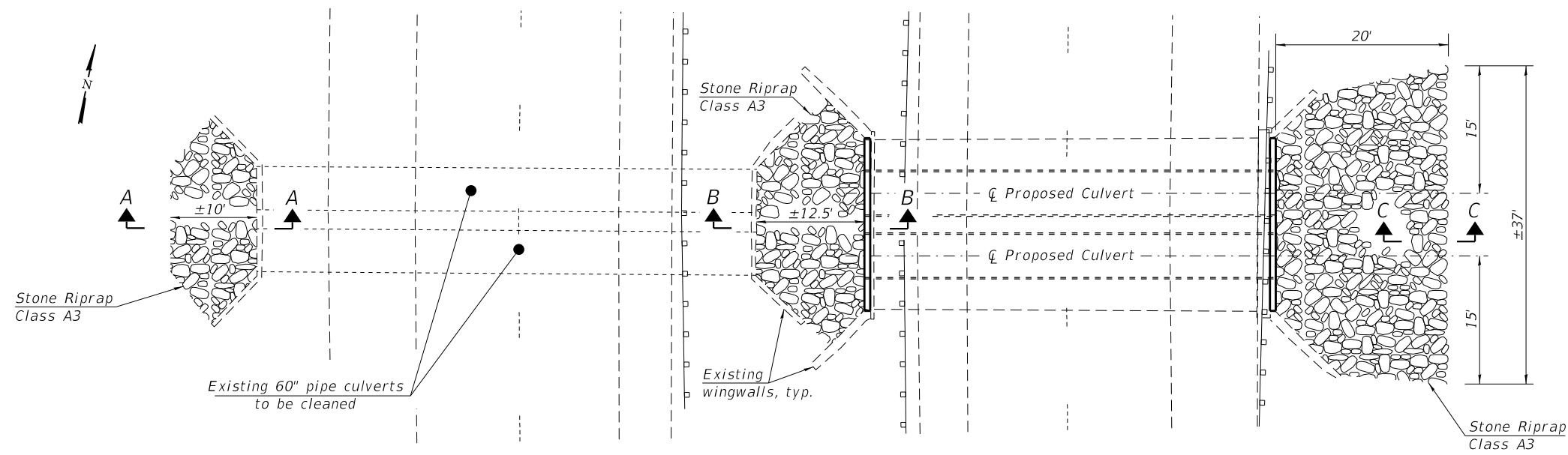
2 1/2" Latex Concrete Overlay thickness is prior to grinding.

INDEX OF SHEETS

1. General Plan
2. General Data
3. Stage Construction Details
4. Slab Bridge Details
5. Latex Concrete Overlay Details
6. Land Bridge No. 2 - Deck Slab Repairs
7. Land Bridge No. 3 Southbound - Deck Slab Repairs
8. Land Bridge No. 3 Northbound - Deck Slab Repairs
9. Soil Borings

TOTAL BILL OF MATERIAL

ITEM	UNIT	TOTAL	SN 049-0021	DRY LAND BRIDGES			
				#2 NB	#2 SB	#3 NB	#3 SB
Removal and Disposal of Unsuitable Material	Cu Yd	379	379				
Stone Riprap, Class A3	Sq Yd	122	122				
Filter Fabric	Sq Yd	122	122				
Concrete Structures	Cu Yd	9.5	9.5				
Bridge Deck Grooving	Sq Yd	4,416		1,004	603	1,577	1,232
Reinforcement Bars, Epoxy Coated	Pound	2,510	2,510				
Preformed Joint Seal, 2 1/2"	Foot	1,440		320	200	520	400
Pipe Culverts, Class C, Type 1 60"	Foot	96	96				
Lightweight Cellular Concrete Fill	Cu Yd	319	319				
Pipe Culvert to be Cleaned 60"	Foot	116	116				
Bridge Deck Scarification 2 1/4 Inch	Sq Yd	11,042		2,511	1,507	3,943	3,081
Bridge Deck Latex Concrete Overlay, 2 1/2 Inches	Sq Yd	11,042		2,511	1,507	3,943	3,081
Structural Repair of Concrete (Depth Equal to or less than 5 Inches)	Sq Ft	40	40				
Partial Depth Patching (Special)	Sq Yd	811		377	227	103	104
Diamond Grinding (Bridge Section)	Sq Yd	6,839		1,560	958	2,419	1,902
Bridge Deck Grooving (Longitudinal)	Sq Yd	6,626		1,507	904	2,366	1,849



GRADING & RIPRAP LIMITS

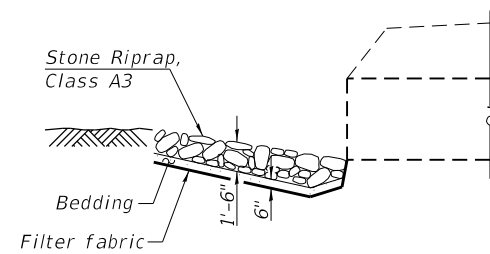
Excavation for riprap to the limits shown will be measured and paid for as Removal and Disposal of Unsuitable Material.

WATERWAY INFORMATION

Drainage Area = 48.7 acres Low Grade Elev. 766.13 @ Sta. 32+06

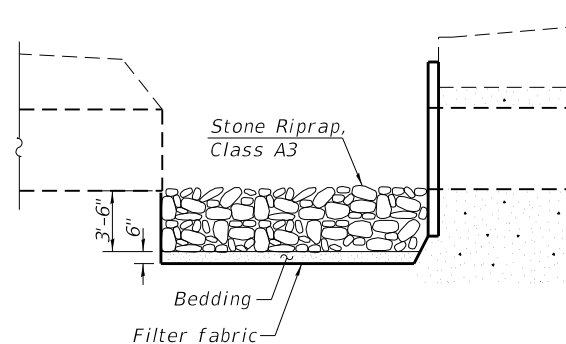
Flood	Freq. Yr.	Q C.F.S.	Opening Ft ²		Nat. H.W.E.	Head - Ft.		Headwater El.	
			Exist.	Prop.		Exist.	Prop.	Exist.	Prop.
Design	10	57	26.3	23.6	759.5	0.1	0.0	759.6	759.5
Design	50	109	36.3	28.4	760.0	0.2	0.0	760.2	760.0
Base	100	138	37.4	29.4	760.1	0.2	0.1	760.3	760.2
Max. Calc.	500	227	48.3	33.6	760.6	0.4	0.8	761.0	761.4

2-year peak flow = 11.3 C.F.S.



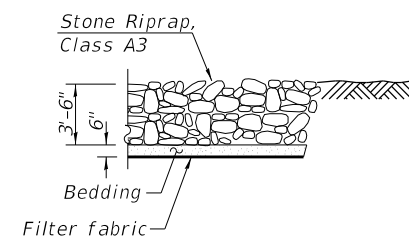
SECTION A-A

Match grade at existing pipe invert and existing ground



SECTION B-B

Match grade to existing & proposed pipe inverts



SECTION C-C

Match grade at new pipe invert and existing ground

MODEL: Default
FILE NAME: I:\Crystal Lake\LDOT\200777-Accurate Var Ph I\ICAD\W05 US12 IL59\2 - General Data.dgn
4/19/2022 3:00:48 PM

BAXTER & WOODMAN
Consulting Engineers

USER NAME = 611blb	DESIGNED - BLB	REVISED - 4/19/22 BLB
PLOT SCALE = 0:2.0000 '"/in.	DRAWN - BLB	REVISED -
PLOT DATE = 4/19/2022	CHECKED - BAB	REVISED -
	DATE - 1/21/2022	REVISED -

**STATE OF ILLINOIS
DEPARTMENT OF TRANSPORTATION**

**GENERAL DATA
US 12 /IL 59 AT FISH CREEK**

SHEET 2 OF 9 SHEETS

F.A.P. RTE.	SECTION	COUNTY	TOTAL SHEETS	SHEET NO.
334	2020-251-BR	LAKE	37	24
CONTRACT NO. 62N23				
ILLINOIS FED. AID PROJECT				

3 REVISED SHEET 4/20/2022

NORTHBOUND - BILL OF MATERIAL

ITEM	UNIT	QUANTITY
Preformed Joint Seal 2 1/2"	Foot	320
Bridge Deck Grooving	Sq Yd	1004
Bridge Deck Scarification 2 1/4 Inch	Sq Yd	2511
Bridge Deck Latex Concrete Overlay 2 1/2"	Sq Yd	2511
Partial Depth Patching (Special)	Sq Yd	377
Diamond Grinding (Bridge Section)	Sq Yd	1560
Bridge Deck Grooving (Longitudinal)	Sq Yd	1507

SOUTHBOUND - BILL OF MATERIAL

ITEM	UNIT	QUANTITY
Preformed Joint Seal 2 1/2"	Foot	200
Bridge Deck Grooving	Sq Yd	603
Bridge Deck Scarification 2 1/4 Inch	Sq Yd	1507
Bridge Deck Latex Concrete Overlay 2 1/2"	Sq Yd	1507
Partial Depth Patching (Special)	Sq Yd	227
Diamond Grinding (Bridge Section)	Sq Yd	958
Bridge Deck Grooving (Longitudinal)	Sq Yd	904

LEGEND

 Deck Slab Repair (Partial Depth)*

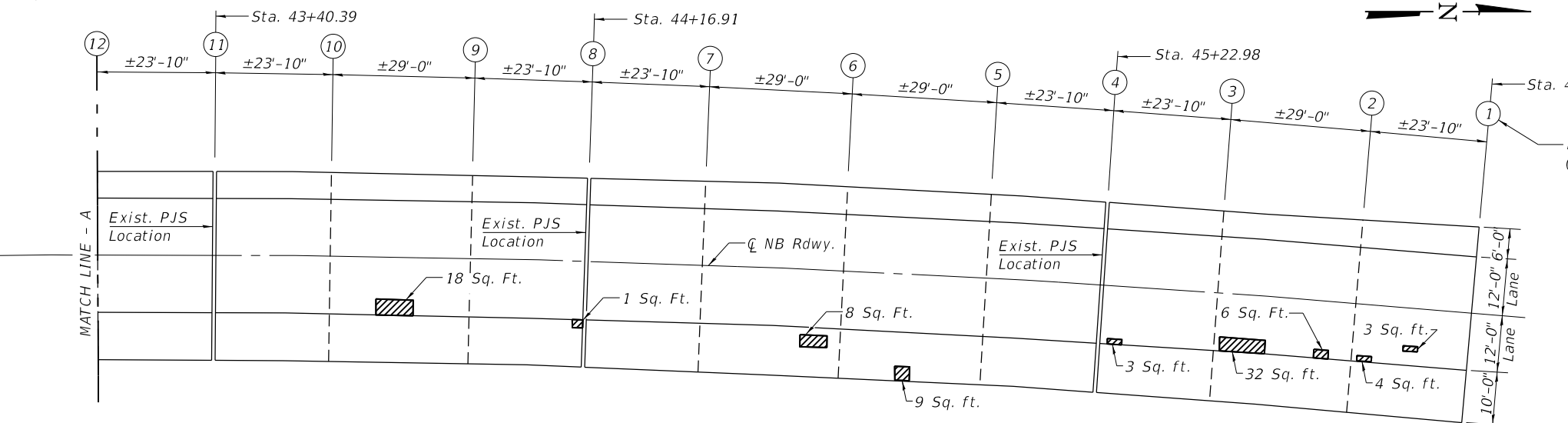
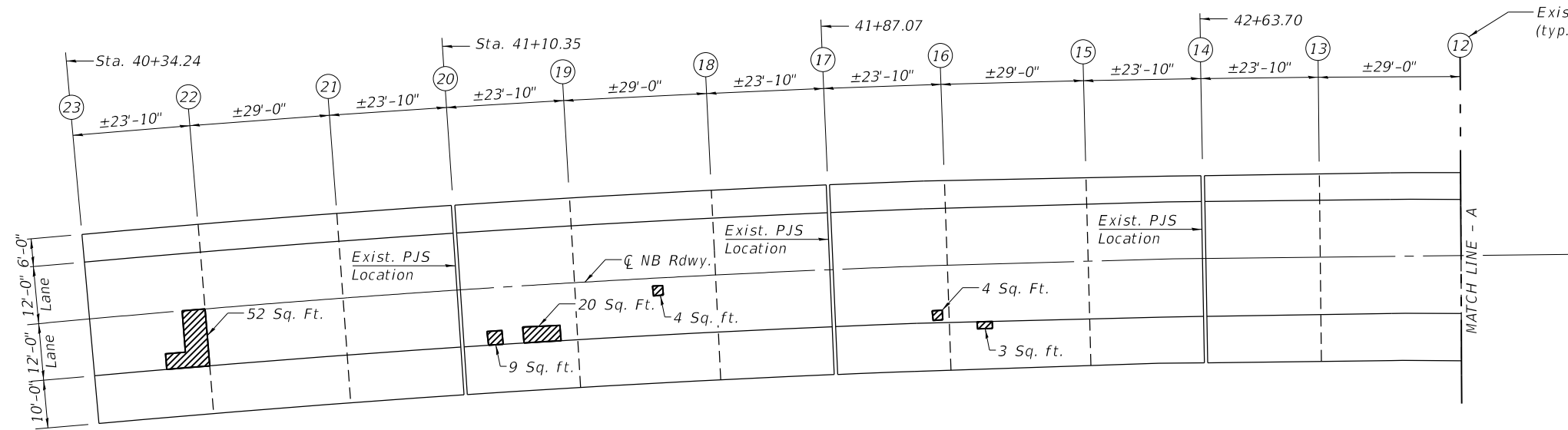
* Area of Deck Slab Repair (Partial Depth) are provided for information only and shall be included in the cost of Bridge Deck Latex Concrete Overlay, 2 1/2"

NOTES

Areas of deck slab repair shown are estimated. Partial Depth Patching (Special) areas are not shown. The actual repair areas for both items shall be determined by the Engineer during Construction.

See Sheet 5 of 9 for Deck Slab Repair (Partial) and other details.
See Sheet 7 of 9 for Preformed Joint Seal (PJS) details.

Bridge Deck Grooving shall be used for the shoulders and Bridge Deck Grooving (Longitudinal) shall be used for the lanes.



**PLAN - NORTHBOUND
LAND BRIDGE NO. 2**

**PLAN - SOUTHBOUND
LAND BRIDGE NO. 2**

MODEL: Default
FILE NAME: I:\Crystal Lake\LDOT\200777-Accurate Var Ph I\CAD\W05 US12 IL596 - land bridge.dgn



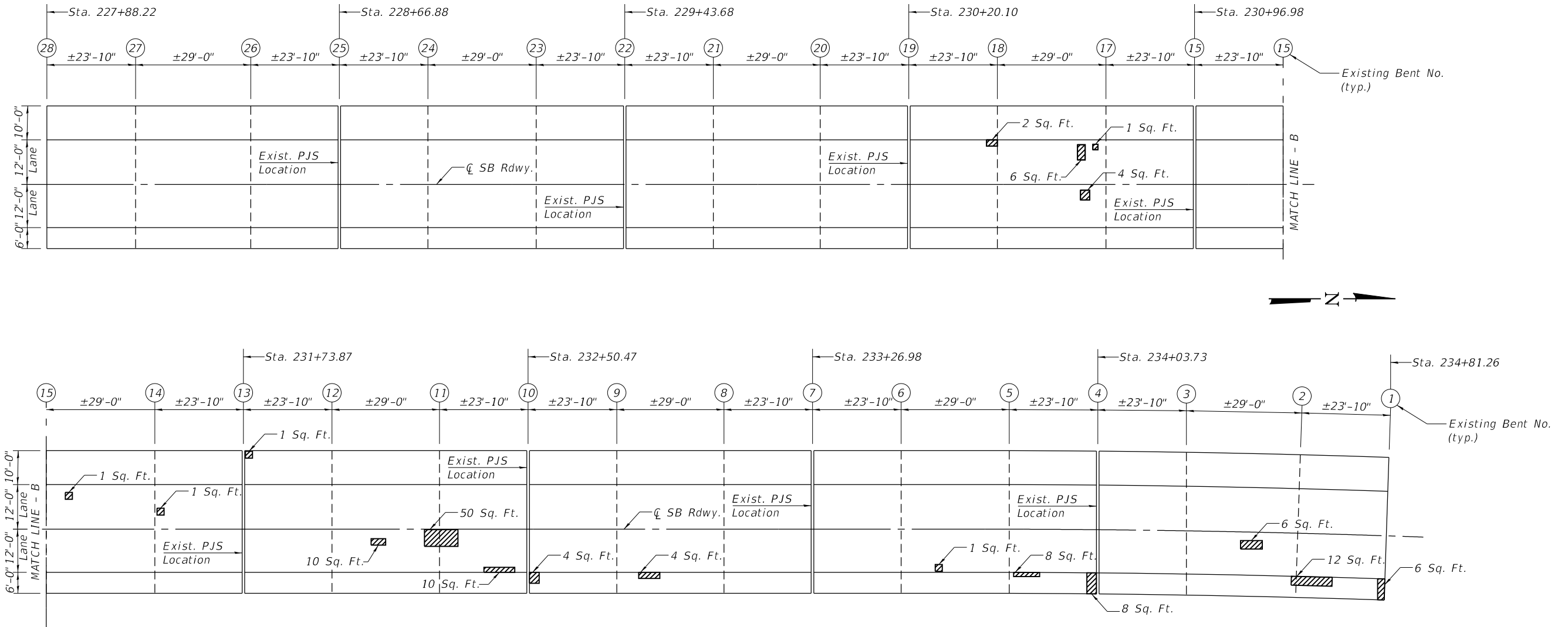
USER NAME = 611blb	DESIGNED - BAB	REVISED - 4/19/22 BLB
PLOT SCALE = 0:2.0000 '"/in.	DRAWN - BAB	REVISED -
PLOT DATE = 4/19/2022	CHECKED - AS	REVISED -
	DATE - 1/21/2022	REVISED -

**STATE OF ILLINOIS
DEPARTMENT OF TRANSPORTATION**

**LAND BRIDGE NO. 2 - DECK SLAB REPAIRS
US 12 /IL 59 AT FISH CREEK**

SHEET 6 OF 9 SHEETS

REVIS			
F.A.P. RTE.	SECTION	COUNTY	TOTAL SHEETS
334	2020-251-BR	LAKE	37
			SHEET NO. 28
CONTRACT NO. 62N23			
ILLINOIS FED. AID PROJECT			



PLAN - SOUTHBOUND
LAND BRIDGE NO. 3

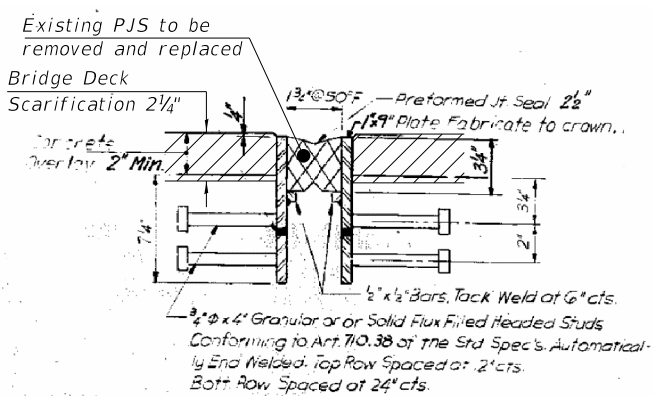
SOUTHBOUND - BILL OF MATERIAL

ITEM	UNIT	QUANTITY
Preformed Joint Seal 2 1/2"	Foot	400
Bridge Deck Grooving	Sq Yd	1232
Bridge Deck Scarification 2 1/4 Inch	Sq Yd	3081
Bridge Deck Latex Concrete Overlay 2 1/2"	Sq Yd	3081
Partial Depth Patching (Special)	Sq Yd	104
Diamond Grinding (Bridge Section)	Sq Yd	1902
Bridge Deck Grooving (Longitudinal)	Sq Yd	1849

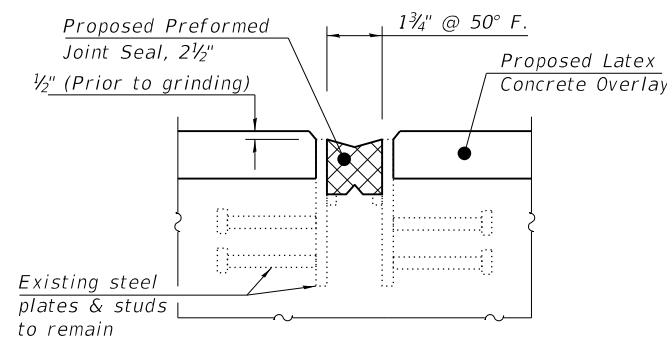
LEGEND

Deck Slab Repair (Partial Depth)*

* Area of Deck Slab Repair (Partial Depth) are provided for information only and shall be included in the cost of Bridge Deck Latex Concrete Overlay, 2 1/2"



EXISTING PREFORMED JOINT SEAL
(FOR INFORMATION ONLY)



PROPOSED PREFORMED JOINT SEAL

NOTES

Areas of deck slab repair shown are estimated. Partial Depth Patching (Special) areas are not shown. The actual repair areas for both items shall be determined by the Engineer during Construction.

See Sheet 5 of 9 for Deck Slab Repair (Partial) and other details.

Bridge Deck Grooving shall be used for the shoulders and Bridge Deck Grooving (Longitudinal) shall be used for the lanes.

MODEL: Default
FILE NAME: I:\Crystal Lakel\DOT\200777-Accurate Var Ph I\CAD\W05 US12 IL597 - land bridge.dgn
4/19/2022 3:08:58 PM

BAXTER & WOODMAN
Consulting Engineers

USER NAME = 611blb	DESIGNED - BAB	REVISED - 3 4/19/22 BLB
PLOT SCALE = 0:2,0000 1" / in.	DRAWN - BAB	REVISED -
PLOT DATE = 4/19/2022	CHECKED - AS	REVISED -
	DATE - 1/21/2022	REVISED -

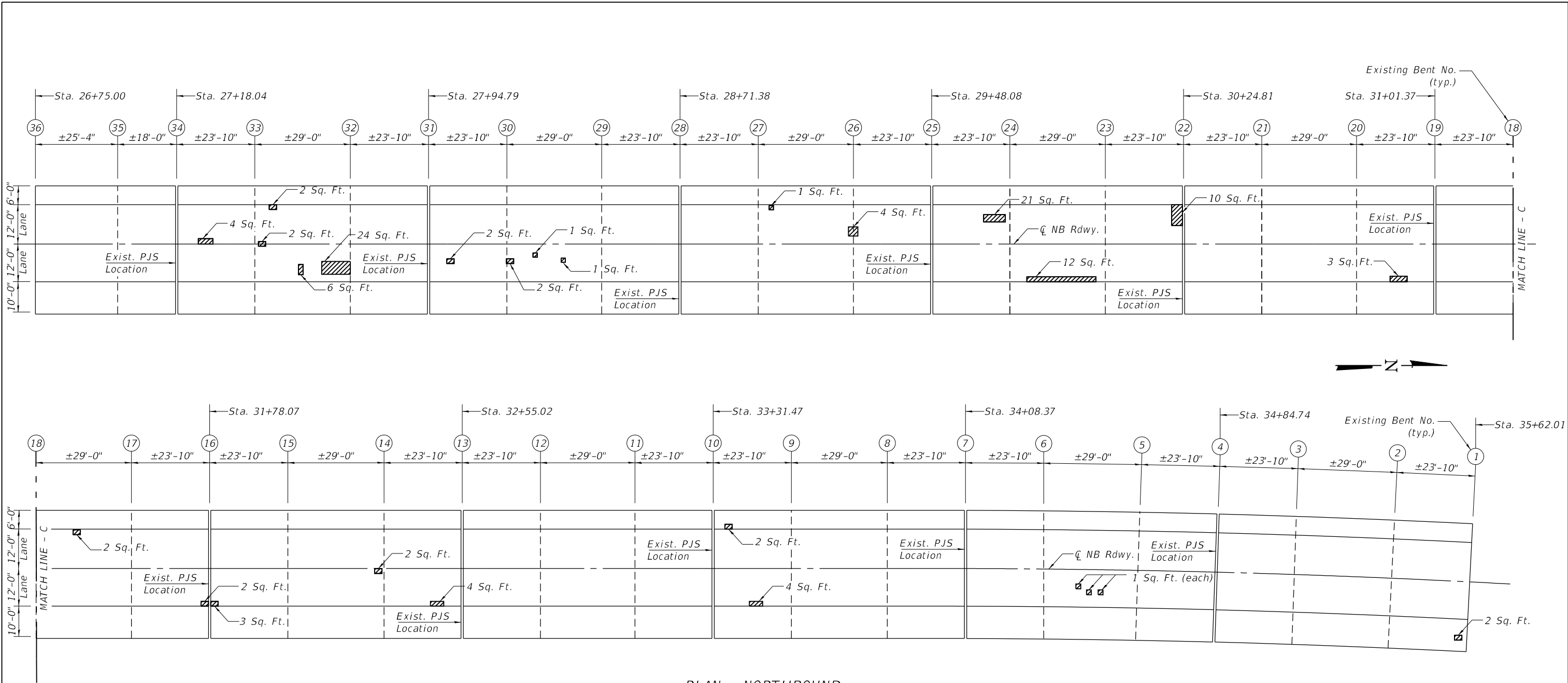
STATE OF ILLINOIS
DEPARTMENT OF TRANSPORTATION

LAND BRIDGE NO. 3 SOUTHBOUND - DECK SLAB REPAIRS
US 12 /IL 59 AT FISH CREEK

SHEET 7 OF 9 SHEETS

F.A.P. RTE.	SECTION	COUNTY	TOTAL SHEETS	SHEET NO.
334	2020-251-BR	LAKE	37	29
CONTRACT NO. 62N23				
ILLINOIS FED. AID PROJECT				

3 REVISED SHEET 4/20/2022



PLAN - NORTHBOUND
LAND BRIDGE NO. 3

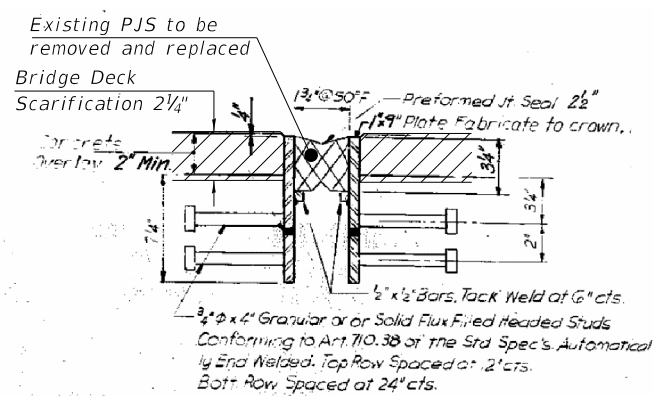
NORTHBOUND - BILL OF MATERIAL

ITEM	UNIT	QUANTITY
Preformed Joint Seal 2 1/2"	Foot	520
Bridge Deck Grooving	Sq Yd	1577
Bridge Deck Scarification 2 1/4 Inch	Sq Yd	3943
Bridge Deck Latex Concrete Overlay 2 1/2"	Sq Yd	3943
Partial Depth Patching (Special)	Sq Yd	103
Diamond Grinding (Bridge Section)	Sq Yd	2419
Bridge Deck Grooving (Longitudinal)	Sq Yd	2366

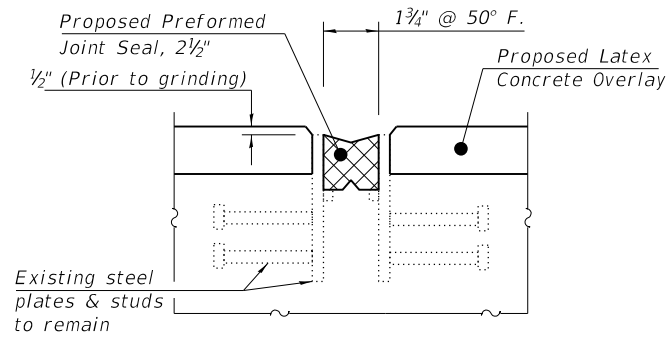
LEGEND

Deck Slab Repair (Partial Depth)*

* Area of Deck Slab Repair (Partial Depth) are provided for information only and shall be included in the cost of Bridge Deck Latex Concrete Overlay, 2 1/2"



EXISTING PREFORMED JOINT SEAL
(FOR INFORMATION ONLY)



PROPOSED PREFORMED JOINT SEAL

NOTES

Areas of deck slab repair shown are estimated. Partial Depth Patching (Special) areas are not shown. The actual repair areas for both items shall be determined by the Engineer during Construction.

See Sheet 5 of 9 for Deck Slab Repair (Partial) and other details.

Bridge Deck Grooving shall be used for the shoulders and Bridge Deck Grooving (Longitudinal) shall be used for the lanes.

MODEL: Default
FILE NAME: I:\Crystal Lake\DOT\200777-Accurate Var Ph I\CAD\W05 US12 IL5918 - land bridge.dgn
4/19/2022 3:09:44 PM



USER NAME = 611blb	DESIGNED - BAB	REVISED - 3/4/19/22 BLB
DRAWN - BAB	CHECKED - AS	REVISED -
PLOT SCALE = 0:2.0000 1" / in.	DATE - 1/21/2022	REVISED -
PLOT DATE = 4/19/2022		

STATE OF ILLINOIS
DEPARTMENT OF TRANSPORTATION

LAND BRIDGE NO. 3 NORTHBOUND - DECK SLAB REPAIRS
US 12 /IL 59 AT FISH CREEK

SHEET 8 OF 9 SHEETS

F.A.P. RTE. 334	SECTION 2020-251-BR	COUNTY LAKE	TOTAL SHEETS 37	SHEET NO. 30
CONTRACT NO. 62N23				
ILLINOIS FED. AID PROJECT				

REVISED SHEET 4/20/2022