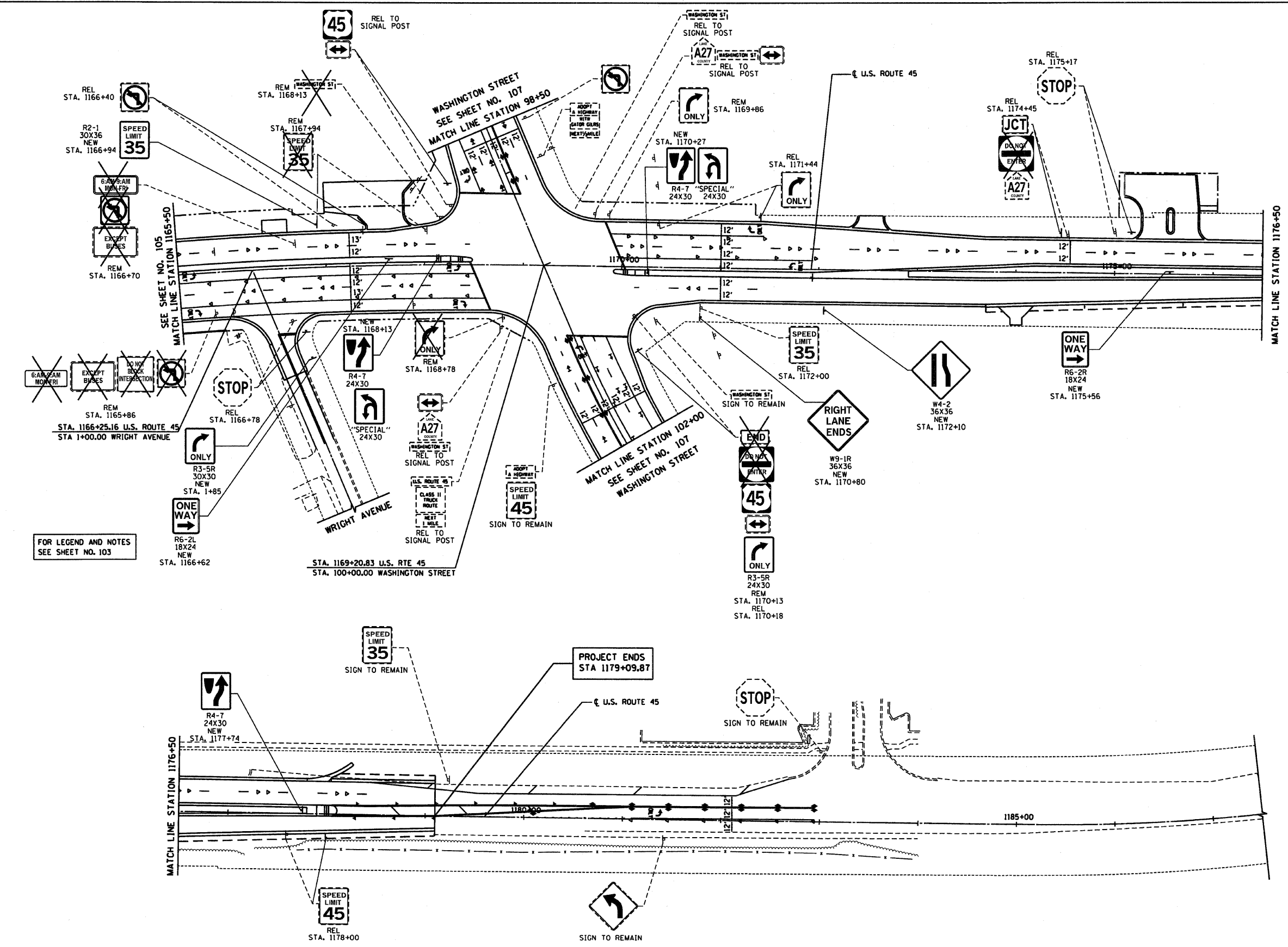
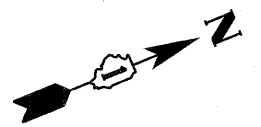
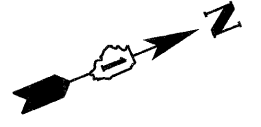


RTE	SECTION	COUNTY	TOTAL SHEETS	SHEET NO
344	(46-15&47)WRS-2	LAKE	234	106
STA. 1165+50		TO STA. 1179+09.87		
FED. ROAD DIST. NO. 7		ILLINOIS FED. AID PROJECT		
CONTRACT NO. 60956				



FOR LEGEND AND NOTES
SEE SHEET NO. 103



TranSystems

12/14/09 - g:\401\2000\0005302\cod\signage_116550.spl

REVISIONS	
NAME	DATE

ILLINOIS DEPARTMENT OF TRANSPORTATION
SIGNAGE PLAN
 U.S. ROUTE 45
 STATION 1165+50 TO STATION 1179+09.87

HORIZ. 50 0 50
 SCALE IN FEET

DATE 12/14/09
 DRAWN BY SAH
 CHECKED BY MJL