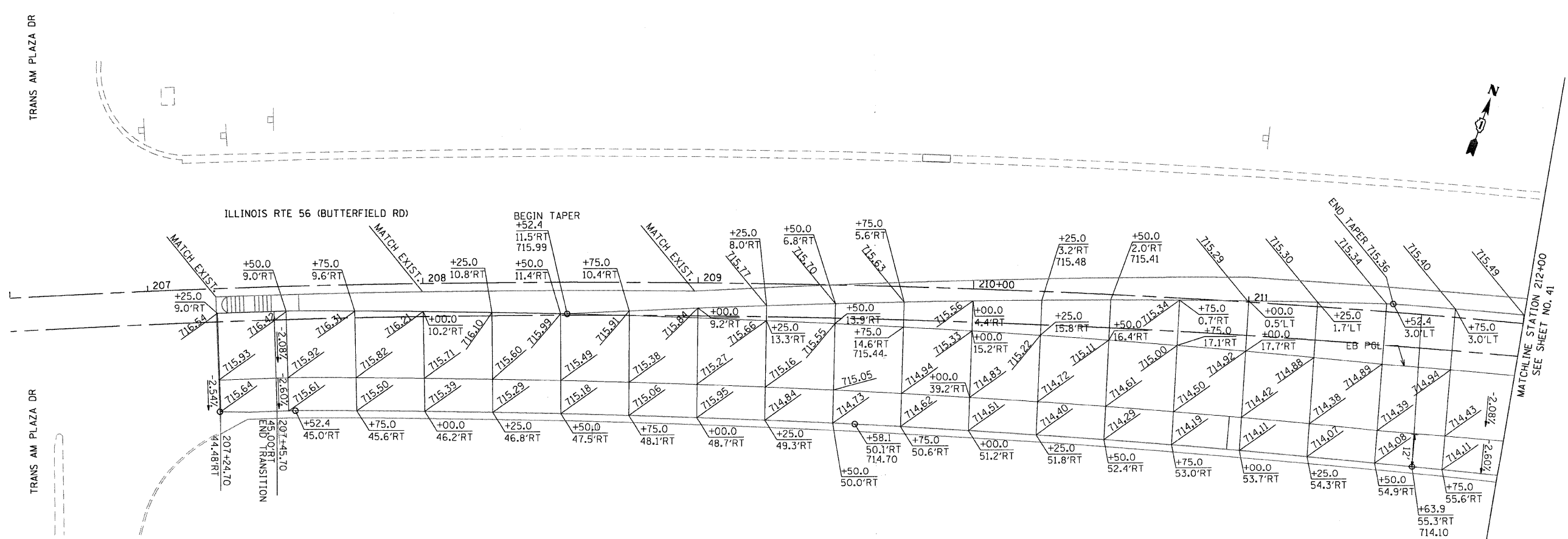


WESTBOUND												EASTBOUND												
LEFT EOP ELEV.	LEFT EOP OFFSET	LANE 3 WIDTH	SLOPE LN 3 %	LANE 1&2 ELEV	LN 1&2 WIDTH (FT)	SLOPE LN 1&2 %	WB PGL OFFSET	WB PGL ELEV	SLOPE LEFT TURN	MEDIAN LEFT TURN	LEFT TURN EOP	STATION	LEFT TURN EOP	MEDIAN LEFT TURN	SLOPE LEFT TURN	EB PGL ELEV	EB PGL OFFSET	SLOPE LN 1&2 %	LN 1&2 WIDTH (FT)	LANE 1&2 ELEV	SLOPE LN 3 %	LANE 3 WIDTH	RIGHT EOP OFFSET	RIGHT EOP ELEV.
723.21	53.0' LT	14.0'	2.08%	722.91	24.0'	2.08%	15.0' LT	722.41	-2.08%	3.99'	722.32	220+00.00	-	-	-	722.34	15.0' RT	-2.08%	24.0'	721.84	-2.60%	14.0'	53.0' RT	721.48
723.31	53.0' LT	14.0'	2.08%	723.01	24.0'	2.08%	15.0' LT	722.51	-2.08%	1.83'	722.47	220+25.00	-	-	-	722.46	15.0' RT	-2.08%	24.0'	721.96	-2.60%	14.0'	53.0' RT	721.60
723.37	53.0' LT	14.0'	2.08%	723.07	24.0'	2.08%	15.0' LT	722.57	-	-	-	220+50.00	-	-	-	722.54	15.0' RT	-2.08%	24.0'	722.04	-2.60%	14.0'	53.0' RT	721.68
723.38	53.0' LT	14.0'	2.08%	723.09	24.0'	2.08%	15.0' LT	722.59	-	-	-	220+75.00	-	-	-	722.57	15.0' RT	-2.08%	24.0'	722.07	-2.60%	14.0'	53.0' RT	721.71
723.36	53.0' LT	14.0'	2.08%	723.07	24.0'	2.08%	15.0' LT	722.57	-	-	-	221+00.00	-	-	-	722.56	15.0' RT	-2.08%	24.0'	722.06	-2.60%	14.0'	53.0' RT	721.70
723.30	53.0' LT	14.0'	2.08%	723.00	24.0'	2.08%	15.0' LT	722.50	-	-	-	221+25.00	-	-	-	722.50	15.0' RT	-2.08%	24.0'	722.00	-2.60%	14.0'	53.0' RT	721.64
723.19	53.0' LT	14.0'	2.08%	722.90	24.0'	2.08%	15.0' LT	722.40	-	-	-	221+50.00	-	-	-	722.40	15.0' RT	-2.08%	24.0'	721.90	-2.60%	14.0'	53.0' RT	721.54
723.08	53.0' LT	14.0'	2.08%	722.79	24.0'	2.08%	15.0' LT	722.29	-	-	-	221+71.83	WB BEG TR LANE 1, 2 & 3	-	-	722.29	15.0' RT	-2.08%	24.0'	721.79	-2.60%	14.0'	53.0' RT	721.43
723.03	53.0' LT	14.0'	2.01%	722.75	24.0'	2.01%	15.0' LT	722.27	-	-	-	221+75.00	-	-	-	722.27	15.0' RT	-2.08%	24.0'	721.77	-2.60%	14.0'	53.0' RT	721.41
722.70	53.0' LT	14.0'	1.45%	722.50	24.0'	1.45%	15.0' LT	722.15	-	-	-	222+00.00	-	-	-	722.15	15.0' RT	-2.08%	24.0'	721.65	-2.60%	14.0'	53.0' RT	721.29
722.36	53.0' LT	14.0'	0.90%	722.23	24.0'	0.89%	15.0' LT	722.02	-	-	-	222+25.00	-	-	-	722.02	15.0' RT	-2.08%	24.0'	721.52	-2.60%	14.0'	53.0' RT	721.16
722.03	53.0' LT	14.0'	0.34%	721.98	24.0'	0.33%	15.0' LT	721.90	-	-	-	222+50.00	-	-	-	721.90	15.0' RT	-2.08%	24.0'	721.40	-2.60%	14.0'	53.0' RT	721.04
721.83	53.0' LT	15.0'	0.01%	721.83	24.0'	0.00%	14.0' LT	721.83	-	-	-	222+64.83	-	-	-	721.83	15.0' RT	-2.08%	24.0'	721.33	-2.60%	14.0'	53.0' RT	720.97
721.69	53.0' LT	14.0'	-0.22%	721.72	24.0'	-0.23%	15.0' LT	721.77	-	-	-	222+75.00	-	-	-	721.77	15.0' RT	-2.08%	24.0'	721.27	-2.60%	14.0'	53.0' RT	720.91
721.35	53.0' LT	14.0'	-0.78%	721.46	24.0'	-0.79%	15.0' LT	721.65	-	-	-	223+00.00	-	-	-	721.65	15.0' RT	-2.08%	24.0'	721.15	-2.60%	14.0'	53.0' RT	720.79
721.01	53.0' LT	14.0'	-1.33%	721.20	24.0'	-1.35%	15.0' LT	721.52	-	-	-	223+25.00	-	-	-	721.52	15.0' RT	-2.08%	24.0'	721.02	-2.60%	14.0'	53.0' RT	720.66
720.68	53.0' LT	14.0'	-1.89%	720.94	24.0'	-1.91%	15.0' LT	721.40	-	-	-	223+50.00	-	-	-	721.40	15.0' RT	-2.08%	24.0'	720.90	-2.60%	14.0'	53.0' RT	720.54
720.57	53.0' LT	14.0'	-2.07%	720.86	24.0'	-2.08%	15.0' LT	721.36	-	-	-	223+57.83	WB END TR LANE 1, & 2	-	-	721.36	15.0' RT	-2.08%	24.0'	720.86	-2.60%	14.0'	53.0' RT	720.50
720.43	53.0' LT	14.0'	-2.45%	720.77	24.0'	-2.08%	15.0' LT	721.27	-	-	-	223+75.00	-	-	-	721.27	15.0' RT	-2.08%	24.0'	720.77	-2.60%	14.0'	53.0' RT	720.41
720.38	53.0' LT	14.0'	-2.60%	720.74	24.0'	-2.08%	15.0' LT	721.24	-	-	-	223+81.83	-	-	-	721.24	15.0' RT	-2.08%	24.0'	720.74	-2.60%	14.0'	53.0' RT	720.38



FILE NAME: I:\2009\7-11-09\7081-22nd.st\street\cadd\sh\160012-SHT-SuperE02.dgn
 PLOT SCALE: 20,0000 1/16"
 USER: MEHE :: Millennium Engineering

MILLENNIA ENGINEERING
 200 22ND Street, Suite 216, Lombard, IL 60148
 630.765.0119 voice, 630.839.2566 fax
 www.millenniaeng.com

DESIGNED - TVN	REVISED -
DRAWN - TVN	REVISED -
CHECKED - RPD	REVISED -
DATE - 7/24/2009	REVISED -

**STATE OF ILLINOIS
 DEPARTMENT OF TRANSPORTATION**

**ILLINOIS RTE 56/22ND STREET
 SUPERELEVATION PAVEMENT PLAN**

SCALE: 1"=20' SHEET NO. 40 OF 362 SHEETS STA. 207+50 TO STA. 212+00

F.A.U. RTE. 1453	SECTION 55WRS	COUNTY DUPAGE	TOTAL SHEETS 362	SHEET NO. 40
FED. ROAD DIST. NO. 7 ILLINOIS FED. AID PROJECT			CONTRACT NO. 60D12	

SE-02

pr\2007\me07081-22nd.st\street\cadd\sh\160012-SHT-SuperE02.dgn