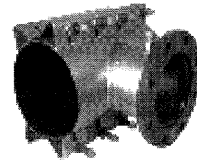




664 - Carbon Flange Tapping Sleeve
665 - Stainless Steel Flange Tapping Sleeve
Stainless Steel Body and Neck
 ANS/NSF® 61 Listed



Material Specifications

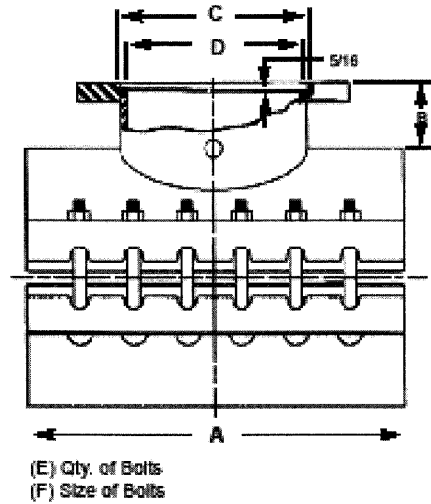
Body: Full circumference band.
18-8 type 304 stainless steel.

Flanges: AWWA C207 Class D, ANSI 150# drilling.
Recessed for Tapping Valve Per MSS-SP 60.
Fusion bonded, Flexi-Coat® epoxy coated carbon steel on 664.
18-8 type 304 stainless steel flange on 665.
Optional: Other types of Flanges, threaded outlets, MJ Outlets

Gasket: Nitrile (Buna-N) NSF® 61 listed-compounded to resist water, oil, acids, alkalis, most (aliphatic) hydrocarbon fluids and many chemicals.
Temperatures up to 180°F.

Bolts, Nuts & Washers: 18-8 type 304 stainless steel heavy hex nuts, stud bolts & washers. Nuts and studs are coated to prevent galling.

Material specifications are subject to change.



664-665 Tapping Sleeve Specifications

Outlet Size	Nominal Body Size	A (In)	B (In)	C (In)	D (In)	E (In)	F (In)
4	4	15	5	5 1/16	4 3/16	8	5/8
	6-18	15	5	5 1/16	4 3/4	8	5/8
	20-24	20	5	5 1/16	4 3/4	8	5/8
6	6	15	5	7 1/16	6 5/16	8	5/8
	8-18	15	5	7 1/16	6 3/4	8	5/8
	20-24	20	5	7 1/16	6 3/4	10	5/8
8	8	20	5	9 1/16	8 3/8	10	5/8
	10-18	20	5	9 1/16	8 3/4	10	5/8
	20-24	25	5	9 1/16	8 3/4	14	5/8
10	10	25	5	11 3/32	10 1/4	14	5/8
	20-24	25	5	11 3/32	10 3/4	14	5/8
12	12	25	5	13 3/32	12 1/4	14	5/8
	14-24	25	5	13 3/32	12 3/4	14	5/8

