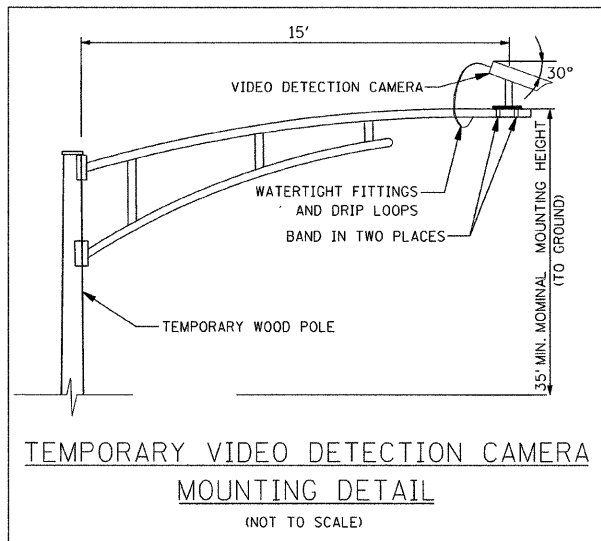


TEMPORARY CABLE DIAGRAM LEGEND

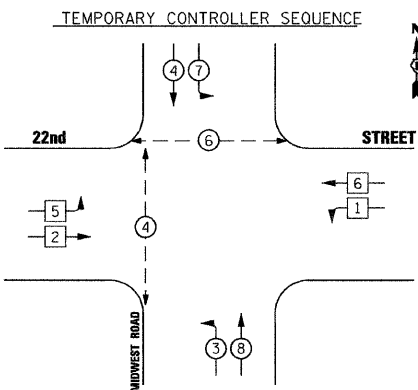
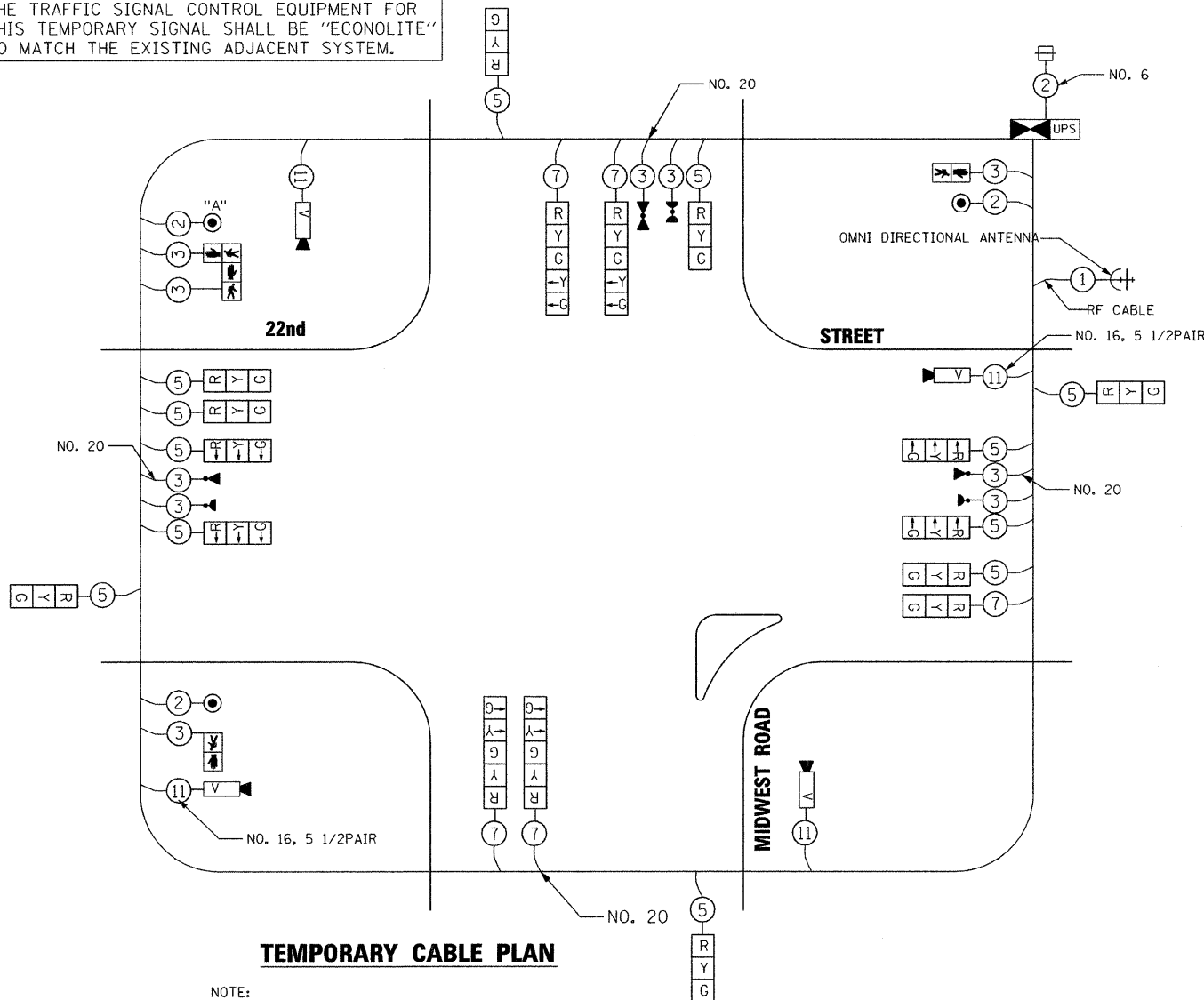
- R** TEMPORARY TRAFFIC SIGNAL SECTION OR PEDESTRIAN SIGNAL SECTION 12" (300mm)
- ⊠** TEMPORARY CONTROLLER CABINET
- ②** INDICATES NUMBER OF CONDUCTORS IN CABLE. ALL CONDUCTORS TO BE NUMBER 14 AWG WIRE UNLESS OTHERWISE NOTED.
- ⊞** TEMPORARY SERVICE INSTALLATION
- ⚡** EMERGENCY VEHICLE LIGHT DETECTOR
- ⚡** CONFIRMATION BEACON
- ⊙** PEDESTRIAN PUSHBUTTON DETECTOR
- VEHICLE DETECTOR, INDUCTION LOOP
- V** VIDEO VEHICLE DETECTION CAMERA
- C** CLOSED CIRCUIT TV
- T** TELEPHONE CONNECTION
- ⊕** TEMPORARY RADIO INTERCONNECT
- UPS** UNINTERRUPTIBLE POWER SUPPLY

NOTES

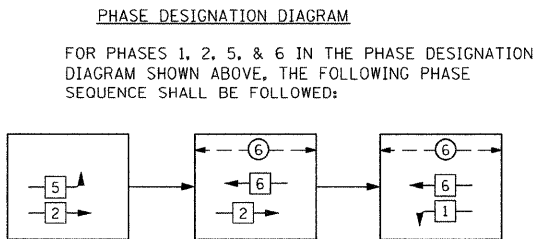
1. ONLY AN APPROVED IDOT ELECTRICAL SUBCONTRACTOR WILL BE PERMITTED TO INSTALL AND ADJUST VIDEO VEHICLE DETECTION SYSTEM AS REQUIRED BY STAGE/PHASE CHANGES.
2. FOR TEMPORARY TRAFFIC SIGNAL CONTROLLER PLATFORM DETAIL. SEE SHEET NO. 227



THE TRAFFIC SIGNAL CONTROL EQUIPMENT FOR THIS TEMPORARY SIGNAL SHALL BE "ECONOLITE" TO MATCH THE EXISTING ADJACENT SYSTEM.

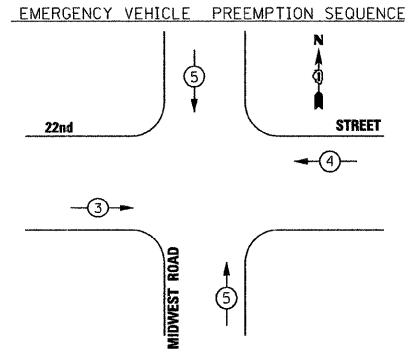


- LEGEND**
- ⊠** SINGLE ENTRY PHASE
 - ⊙** DUAL ENTRY PHASE
 - ⊞** OVERLAP
 - ⊙** PEDESTRIAN PHASE
 - NUMBER REFERS TO ASSOCIATED PHASE



FOR PHASES 1, 2, 5, & 6 IN THE PHASE DESIGNATION DIAGRAM SHOWN ABOVE, THE FOLLOWING PHASE SEQUENCE SHALL BE FOLLOWED:

PHASES 3, 4, 7 & 8 SHALL FOLLOW THE STANDARD SEQUENCE IN ACCORDANCE WITH STATE STANDARD 857001



PROPOSED EMERGENCY VEHICLE PREEMPTORS			
EMERGENCY VEHICLE PREEMPTOR	3	4	5
MOVEMENT	→	←	↑↓

I.D.O.T. TRAFFIC SIGNAL INSTALLATION ELECTRICAL SERVICE REQUIREMENTS					TOTAL WATTAGE
TYPE	NO. OF LAMPS	WATTAGE INCAND.	L.E.D.	OPERATION	
SIGNAL (RED)	17	135	17	0.50	144.5
(YELLOW)	17	135	25	0.25	106.3
(GREEN)	17	135	15	0.25	63.8
ARROW	8	135	12	0.10	9.61
PED. SIGNAL	4	90	25	1.00	100
CONTROLLER	1	100	100	1.00	100
ILLUM. SIGN		84		0.05	
TOTAL					584.1
VIDEO VEH. SENSOR	4	15	15	1.00	60
FLASHER				0.50	

ILLINOIS DEPARTMENT OF TRANSPORTATION
DIVISION OF HIGHWAY/DISTRICT 1
201 CENTER CT/SCHAUMBURG, IL 60196-1096
ENERGY SUPPLY - CONTACT: DEB RANKIN
PHONE: 630-691-4379
COMPANY: COMMONWEALTH EDISON

MILLENNIA ENGINEERING
200 22ND Street, Suite 216, Lombard, IL 60148
630.785.0110 voice, 630.839.2566 fax
www.millenniaeng.com

DESIGNED - TVN	REVISED -
DRAWN - TVN	REVISED -
CHECKED - RPD	REVISED -
DATE - 10/05/2009	REVISED -

STATE OF ILLINOIS DEPARTMENT OF TRANSPORTATION

22nd STREET AT MIDWEST ROAD TEMPORARY TRAFFIC SIGNAL CABLE PLAN, AND PHASE DESIGNATION DIAGRAM

SCALE: SHEET NO. 202 OF 362 SHEETS STA. TO STA.

F.A.U. RTE. 1453	SECTION 55WRS	COUNTY	TOTAL SHEETS 362	SHEET NO. 202
CONTRACT NO. 60D12			TTS24	

FED. ROAD DIST. NO. 7 ILLINOIS FED. AID PROJECT