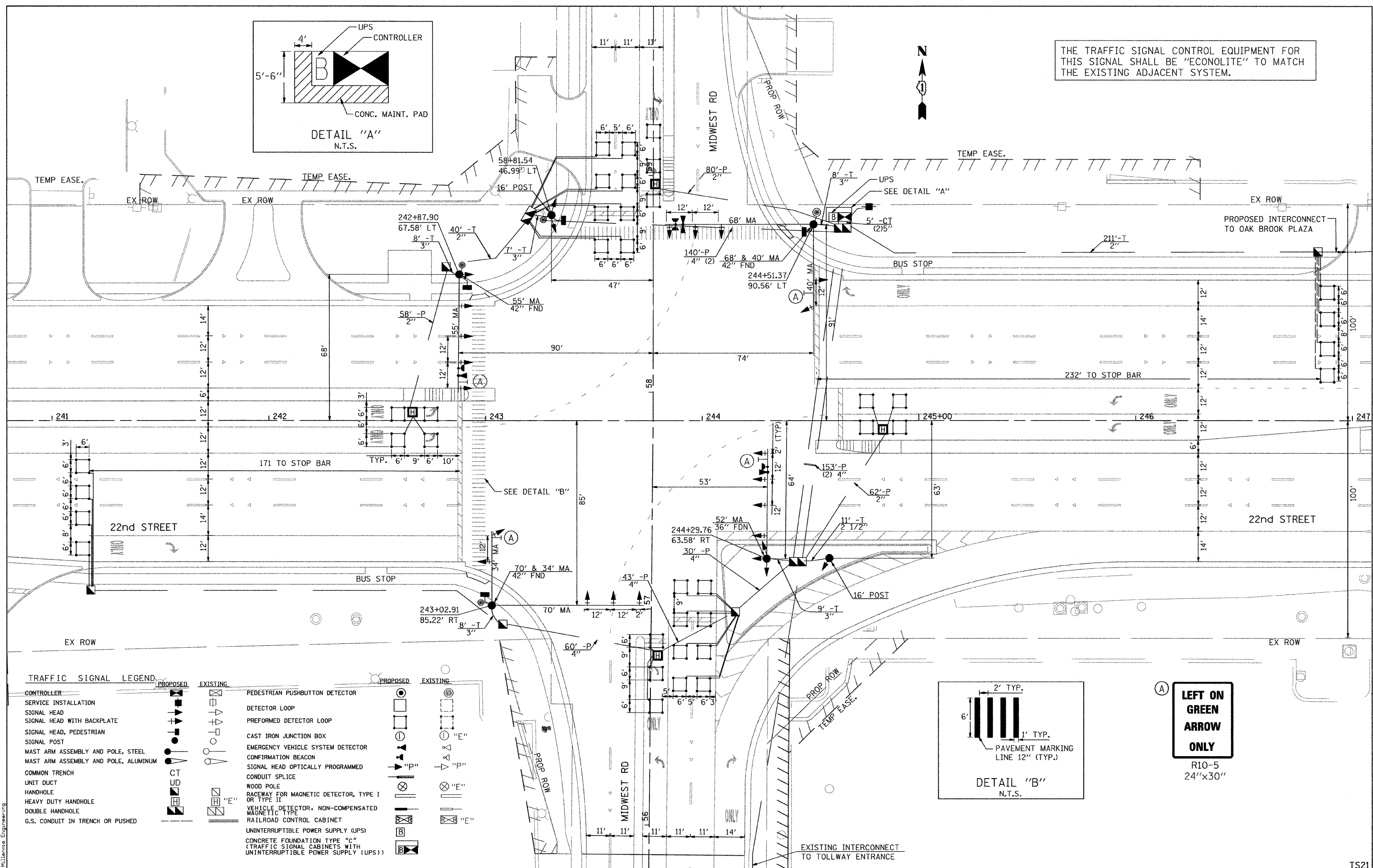
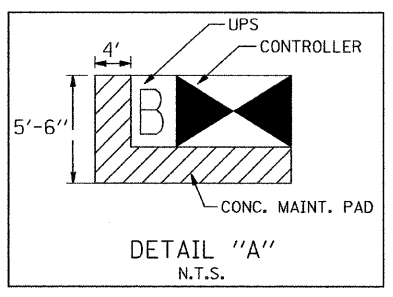
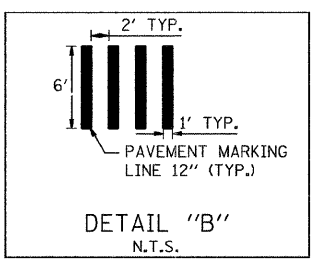


THE TRAFFIC SIGNAL CONTROL EQUIPMENT FOR THIS SIGNAL SHALL BE "ECONOLITE" TO MATCH THE EXISTING ADJACENT SYSTEM.



TRAFFIC SIGNAL LEGEND

PROPOSED	EXISTING	PROPOSED	EXISTING
CONTROLLER		PEDESTRIAN PUSHBUTTON DETECTOR	
SERVICE INSTALLATION		DETECTOR LOOP	
SIGNAL HEAD		PREFORMED DETECTOR LOOP	
SIGNAL HEAD WITH BACKPLATE		CAST IRON JUNCTION BOX	
SIGNAL HEAD, PEDESTRIAN		EMERGENCY VEHICLE SYSTEM DETECTOR	
SIGNAL POST		CONFIRMATION BEACON	
MAST ARM ASSEMBLY AND POLE, STEEL		SIGNAL HEAD OPTICALLY PROGRAMMED	
MAST ARM ASSEMBLY AND POLE, ALUMINUM		CONDUIT SPLICE	
COMMON TRENCH		WOOD POLE	
UNIT DUCT		RACEWAY FOR MAGNETIC DETECTOR, TYPE I OR TYPE II	
HANDHOLE		VEHICLE DETECTOR, NON-COMPENSATED MAGNETIC TYPE	
HEAVY DUTY HANDHOLE		RAILROAD CONTROL CABINET	
DOUBLE HANDHOLE		UNINTERRUPTIBLE POWER SUPPLY (UPS)	
G.S. CONDUIT IN TRENCH OR PUSHED		CONCRETE FOUNDATION TYPE "C"	
		(TRAFFIC SIGNAL CABINETS WITH UNINTERRUPTIBLE POWER SUPPLY (UPS))	



LEFT ON GREEN ARROW ONLY
R10-5
24"x30"

FILE NAME = P:\2007\ME07081-22nd.Street\Cadd\Supp3\0168012-SHT-TS02-Midwest-01.dgn
 USER NAME = KJL
 PLOT DATE = 04/01/2010

200 22ND Street, Suite 216, Lombard, IL 60148
 630.745.8110 voice, 630.839.2566 fax
 www.millenniaeng.com
MILLENNIA ENGINEERING

DESIGNED - TVN	REVISED -
DRAWN - TVN	REVISED -
CHECKED - RPD	REVISED -
DATE - 04/01/2010	REVISED -

**STATE OF ILLINOIS
DEPARTMENT OF TRANSPORTATION**

**22nd STREET AT MIDWEST ROAD
TRAFFIC SIGNAL INSTALLATION PLAN**

SCALE: 1"=20' SHEET NO. 203 OF 362 SHEETS STA. TO STA.

F.A.U. RTE. 1453	SECTION 55WRS	COUNTY DUPAGE	TOTAL SHEETS 362	SHEET NO. 203
CONTRACT NO. 60D12				

FED. ROAD DIST. NO. 7 ILLINOIS FED. AID PROJECT
 P:\2007\ME07081-22nd.Street\Cadd\Supp3\0168012-SHT-TS02-Midwest-01.dgn

TS21