

TRAFFIC SIGNAL LEGEND

- PROPOSED**
- CONTROLLER
 - SERVICE INSTALLATION
 - SIGNAL HEAD
 - SIGNAL HEAD WITH BACKPLATE
 - SIGNAL HEAD, PEDESTRIAN
 - SIGNAL POST
 - MAST ARM ASSEMBLY AND POLE, STEEL
 - MAST ARM ASSEMBLY AND POLE, ALUMINUM
 - COMMON TRENCH
 - UNIT DUCT
 - HANDHOLE
 - HEAVY DUTY HANDHOLE
 - DOUBLE HANDHOLE
 - G.S. CONDUIT IN TRENCH OR PUSHED

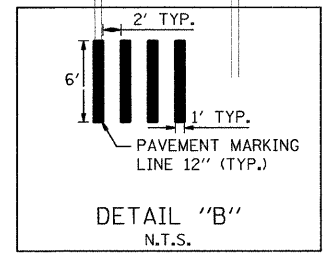
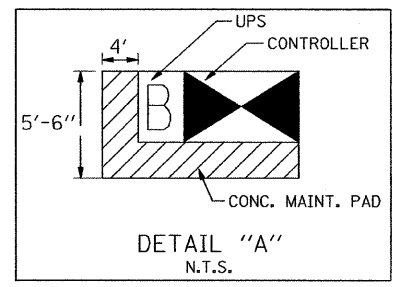
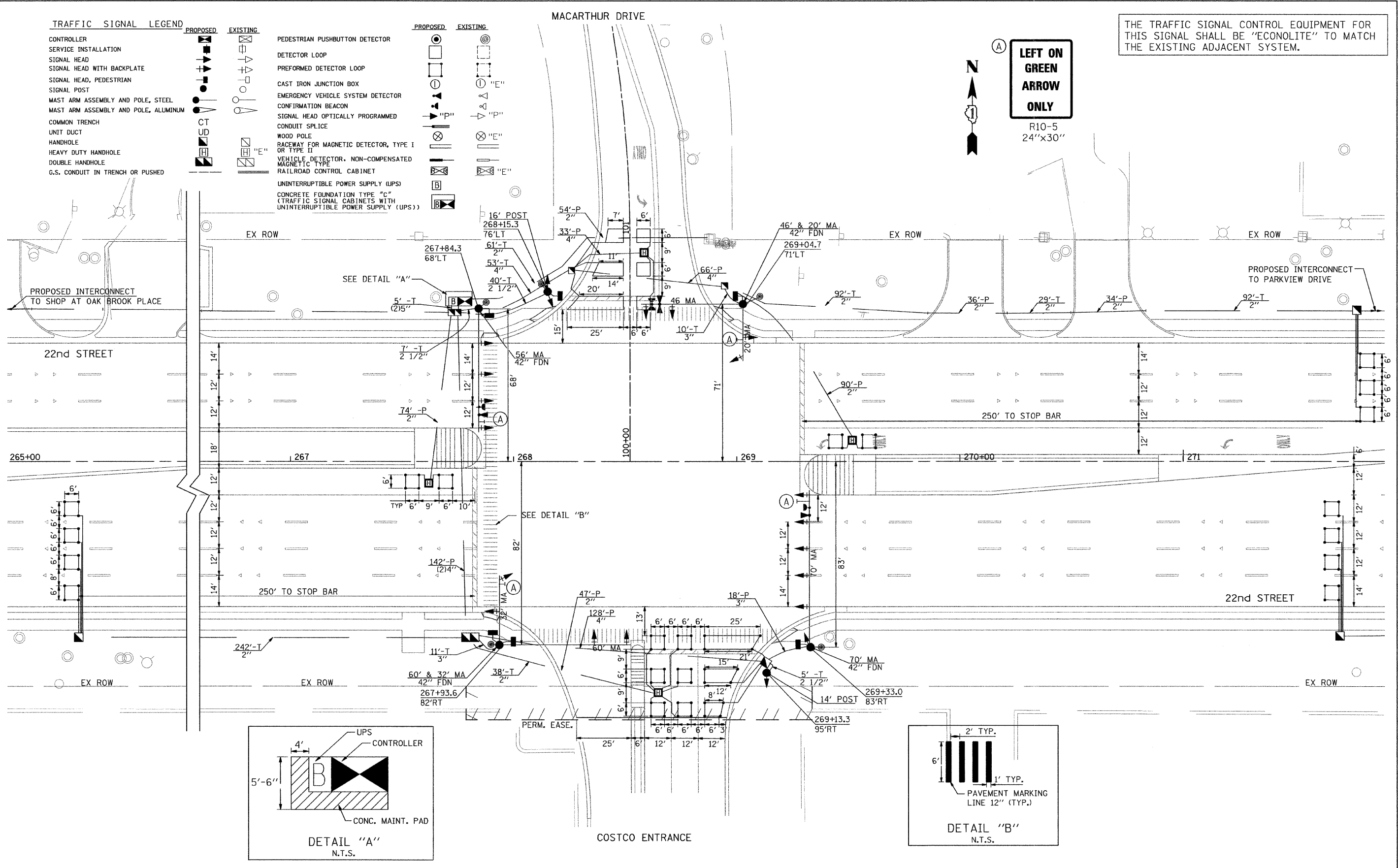
- EXISTING**
- PEDESTRIAN PUSHBUTTON DETECTOR
 - DETECTOR LOOP
 - PREFORMED DETECTOR LOOP
 - CAST IRON JUNCTION BOX
 - EMERGENCY VEHICLE SYSTEM DETECTOR
 - CONFIRMATION BEACON
 - SIGNAL HEAD OPTICALLY PROGRAMMED
 - CONDUIT SPLICE
 - WOOD POLE
 - RACEWAY FOR MAGNETIC DETECTOR, TYPE I OR TYPE II
 - VEHICLE DETECTOR, NON-COMPENSATED MAGNETIC TYPE
 - RAILROAD CONTROL CABINET
 - UNINTERRUPTIBLE POWER SUPPLY (UPS)
 - CONCRETE FOUNDATION TYPE "C" (TRAFFIC SIGNAL CABINETS WITH UNINTERRUPTIBLE POWER SUPPLY (UPS))

- PROPOSED**
- PEDESTRIAN PUSHBUTTON DETECTOR
 - DETECTOR LOOP
 - PREFORMED DETECTOR LOOP
 - CAST IRON JUNCTION BOX
 - EMERGENCY VEHICLE SYSTEM DETECTOR
 - CONFIRMATION BEACON
 - SIGNAL HEAD OPTICALLY PROGRAMMED
 - CONDUIT SPLICE
 - WOOD POLE
 - RACEWAY FOR MAGNETIC DETECTOR, TYPE I OR TYPE II
 - VEHICLE DETECTOR, NON-COMPENSATED MAGNETIC TYPE
 - RAILROAD CONTROL CABINET
 - UNINTERRUPTIBLE POWER SUPPLY (UPS)
 - CONCRETE FOUNDATION TYPE "C" (TRAFFIC SIGNAL CABINETS WITH UNINTERRUPTIBLE POWER SUPPLY (UPS))

- EXISTING**
- PEDESTRIAN PUSHBUTTON DETECTOR
 - DETECTOR LOOP
 - PREFORMED DETECTOR LOOP
 - CAST IRON JUNCTION BOX
 - EMERGENCY VEHICLE SYSTEM DETECTOR
 - CONFIRMATION BEACON
 - SIGNAL HEAD OPTICALLY PROGRAMMED
 - CONDUIT SPLICE
 - WOOD POLE
 - RACEWAY FOR MAGNETIC DETECTOR, TYPE I OR TYPE II
 - VEHICLE DETECTOR, NON-COMPENSATED MAGNETIC TYPE
 - RAILROAD CONTROL CABINET
 - UNINTERRUPTIBLE POWER SUPPLY (UPS)
 - CONCRETE FOUNDATION TYPE "C" (TRAFFIC SIGNAL CABINETS WITH UNINTERRUPTIBLE POWER SUPPLY (UPS))

THE TRAFFIC SIGNAL CONTROL EQUIPMENT FOR THIS SIGNAL SHALL BE "ECONOLITE" TO MATCH THE EXISTING ADJACENT SYSTEM.

LEFT ON GREEN ARROW ONLY
R10-5
24"x30"



FILE NAME = P:\2007\ME07081_22nd Street\Cadd\Supp3\DI6012-SHT-TS05-McArthur-01.dgn
 USER NAME = KULPINSKI, E.
 DATE = 04/01/2010

200 22ND Street, Suite 216, Lombard, IL 60148
 630.705.9110 voice, 630.839.2566 fax
 www.millenniaeng.com
MILLENNIA ENGINEERING

DESIGNED - TVN	REVISED -
DRAWN - TVN	REVISED -
CHECKED - RPD	REVISED -
DATE - 04/01/2010	REVISED -

**STATE OF ILLINOIS
DEPARTMENT OF TRANSPORTATION**

**22nd STREET AT SHOPS AT MACARTHUR DR/COSTCO ENT.
TRAFFIC SIGNAL INSTALLATION PLAN**

SCALE: 1"=20' SHEET NO.209A OF 362 SHEETS STA. TO STA.

F.A.U. RTE. 1453	SECTION 55WRS	COUNTY	TOTAL SHEETS 362	SHEET NO. 209A
FED. ROAD DIST. NO. 7 ILLINOIS FED. AID PROJECT		CONTRACT NO. 60D12		

TS51

P:\2007\ME07081_22nd Street\Cadd\Supp3\DI6012-SHT-TS05-McArthur-01.dgn