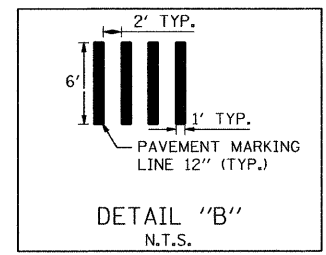
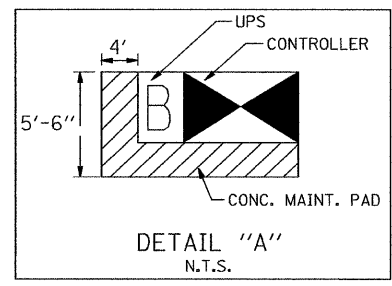
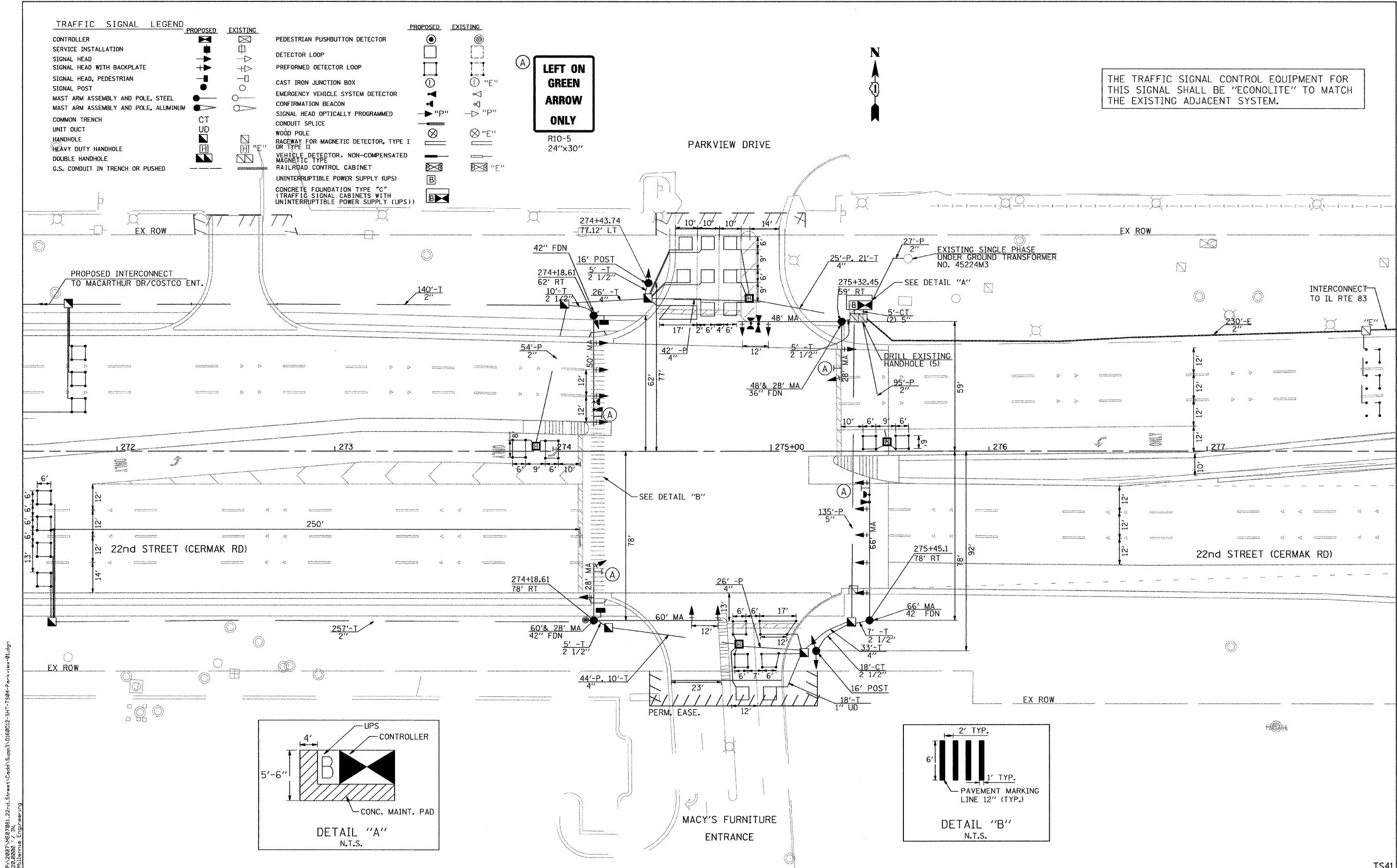


TRAFFIC SIGNAL LEGEND

	PROPOSED	EXISTING		PROPOSED	EXISTING
CONTROLLER			PEDESTRIAN PUSHBUTTON DETECTOR		
SERVICE INSTALLATION			DETECTOR LOOP		
SIGNAL HEAD			PREFORMED DETECTOR LOOP		
SIGNAL HEAD WITH BACKPLATE			CAST IRON JUNCTION BOX		
SIGNAL HEAD, PEDESTRIAN			EMERGENCY VEHICLE SYSTEM DETECTOR		
SIGNAL POST			CONFIRMATION BEACON		
MAST ARM ASSEMBLY AND POLE, STEEL			SIGNAL HEAD OPTICALLY PROGRAMMED		
MAST ARM ASSEMBLY AND POLE, ALUMINUM			CONDUIT SPLICE		
COMMON TRENCH			WOOD POLE		
UNIT DUCT			RACEWAY FOR MAGNETIC DETECTOR, TYPE I OR TYPE II		
HANDHOLE			VEHICLE DETECTOR, NON-COMPENSATED MAGNETIC TYPE		
HEAVY DUTY HANDHOLE			RAILROAD CONTROL CABINET		
DOUBLE HANDHOLE			UNINTERRUPTIBLE POWER SUPPLY (UPS)		
G.S. CONDUIT IN TRENCH OR PUSHED			CONCRETE FOUNDATION TYPE "C" (TRAFFIC SIGNAL CABINETS WITH UNINTERRUPTIBLE POWER SUPPLY (UPS))		

LEFT ON GREEN ARROW ONLY
R10-5
24"x30"

THE TRAFFIC SIGNAL CONTROL EQUIPMENT FOR THIS SIGNAL SHALL BE "ECONOLITE" TO MATCH THE EXISTING ADJACENT SYSTEM.



FILE NAME: P:\2007\ME87081_22nd.Street\Cadd\Supp3\0168012-SHT-TS04-Parkview-01.dgn
 USER: JIN
 PLOT DATE: 04/01/2010 10:58:00 AM
 MILLENNIA ENGINEERING

MILLENNIA ENGINEERING
 200 22ND Street, Suite 216, Lombard, IL 60148
 630.785.0110 voice, 630.833.2566 fax
 www.millenniaeng.com

DESIGNED - TVN	REVISED -
DRAWN - TVN	REVISED -
CHECKED - RPD	REVISED -
DATE - 04/01/2010	REVISED -

**STATE OF ILLINOIS
DEPARTMENT OF TRANSPORTATION**

**22nd STREET AT PARKVIEW DRIVE
TRAFFIC SIGNAL INSTALLATION PLAN**

SCALE: 1"=20' SHEET NO. 213 OF 362 SHEETS STA. TO STA.

F.A.U. RTE. 1453	SECTION 55WRS	COUNTY DUPAGE	TOTAL SHEETS 362	SHEET NO. 213
CONTRACT NO. 60D12				

TS41

FED. ROAD DIST. NO. 7 ILLINOIS FED. AID PROJECT
 P:\2007\ME87081_22nd.Street\Cadd\Supp3\0168012-SHT-TS04-Parkview-01.dgn