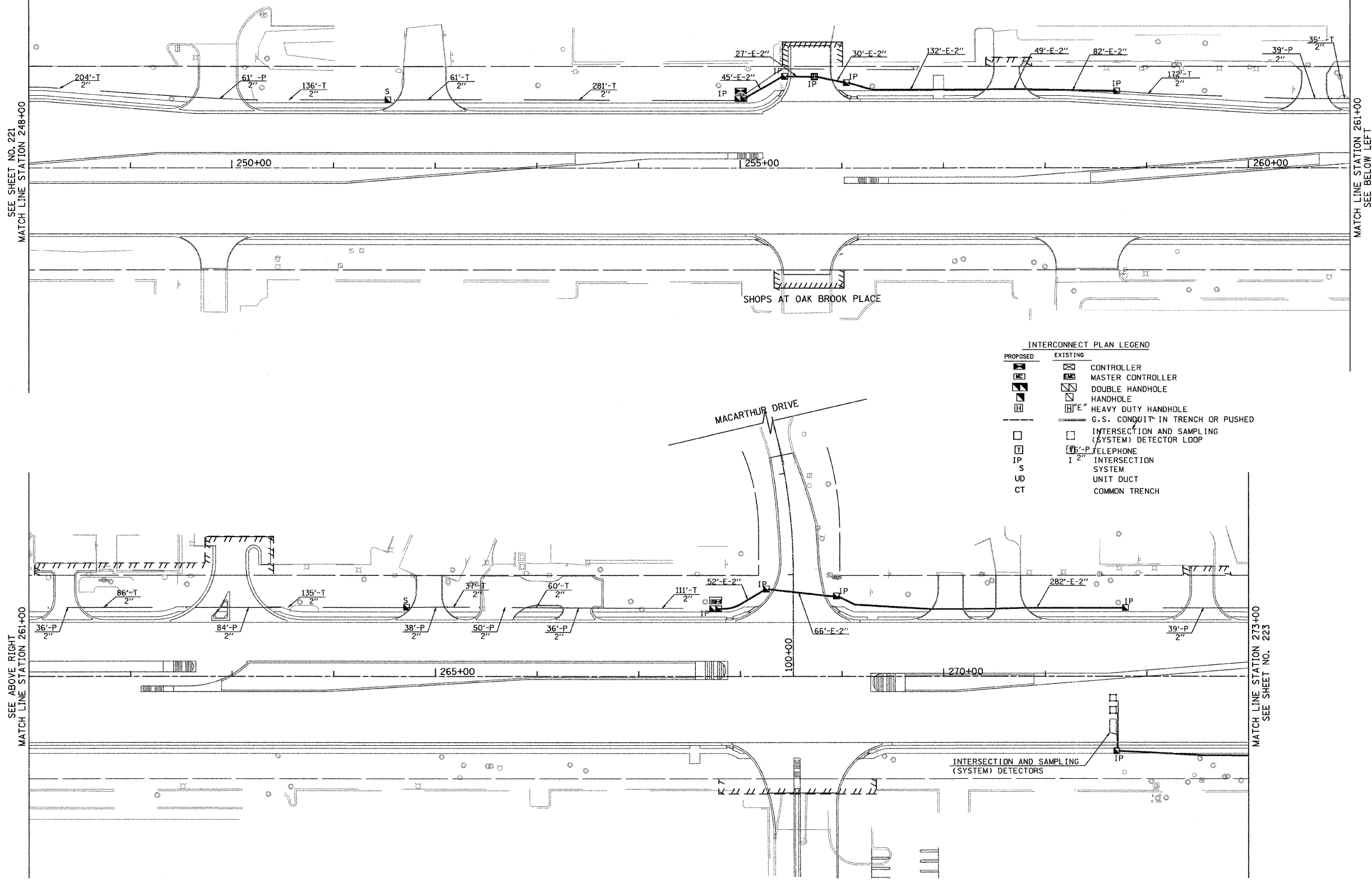
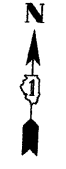


THE TRAFFIC SIGNAL CONTROL EQUIPMENT FOR THIS SYSTEM SHALL BE "ECONOLITE" TO MATCH THE EXISTING ADJACENT SYSTEM.



**INTERCONNECT PLAN LEGEND**

PROPOSED	EXISTING	DESCRIPTION
[Symbol]	[Symbol]	CONTROLLER
[Symbol]	[Symbol]	MASTER CONTROLLER
[Symbol]	[Symbol]	DOUBLE HANDHOLE
[Symbol]	[Symbol]	HANDHOLE
[Symbol]	[Symbol]	HEAVY DUTY HANDHOLE
[Symbol]	[Symbol]	G.S. CONDUIT IN TRENCH OR PUSHED
[Symbol]	[Symbol]	INTERSECTION AND SAMPLING (SYSTEM) DETECTOR LOOP
[Symbol]	[Symbol]	TELEPHONE
[Symbol]	[Symbol]	INTERSECTION SYSTEM
[Symbol]	[Symbol]	UNIT DUCT
[Symbol]	[Symbol]	COMMON TRENCH



FILE NAME = P:\2007\ME07081\_22nd\_Street\Cadd\Supp3\0168012-SHT-INTC03.dgn  
 USER NAME = MILLENNIA\_Engineer109

**MILLENNIA ENGINEERING**  
 200 22ND Street, Suite 216, Lombard, IL 60148  
 630.705.9110 voice, 630.839.2566 fax  
 www.milleniaeng.com

DESIGNED - TVN	REVISED -
DRAWN - TVN	REVISED -
CHECKED - RPD	REVISED -
DATE - 04/01/2010	REVISED -

**STATE OF ILLINOIS  
 DEPARTMENT OF TRANSPORTATION**

**22nd STREET  
 SYSTEM INTERCONNECT PLAN**

SCALE: 1"=50'    SHEET NO.222 OF 362 SHEETS    STA. 248+00 TO STA. 273+00

F.A.U. RTE. 1453	SECTION 55WRS	COUNTY	TOTAL SHEETS 362	SHEET NO. 222
CONTRACT NO. 60D12				

FED. ROAD DIST. NO. 7 ILLINOIS FED. AID PROJECT  
 P:\2007\ME07081\_22nd\_Street\Cadd\Supp3\0168012-SHT-INTC03.dgn

IC-03