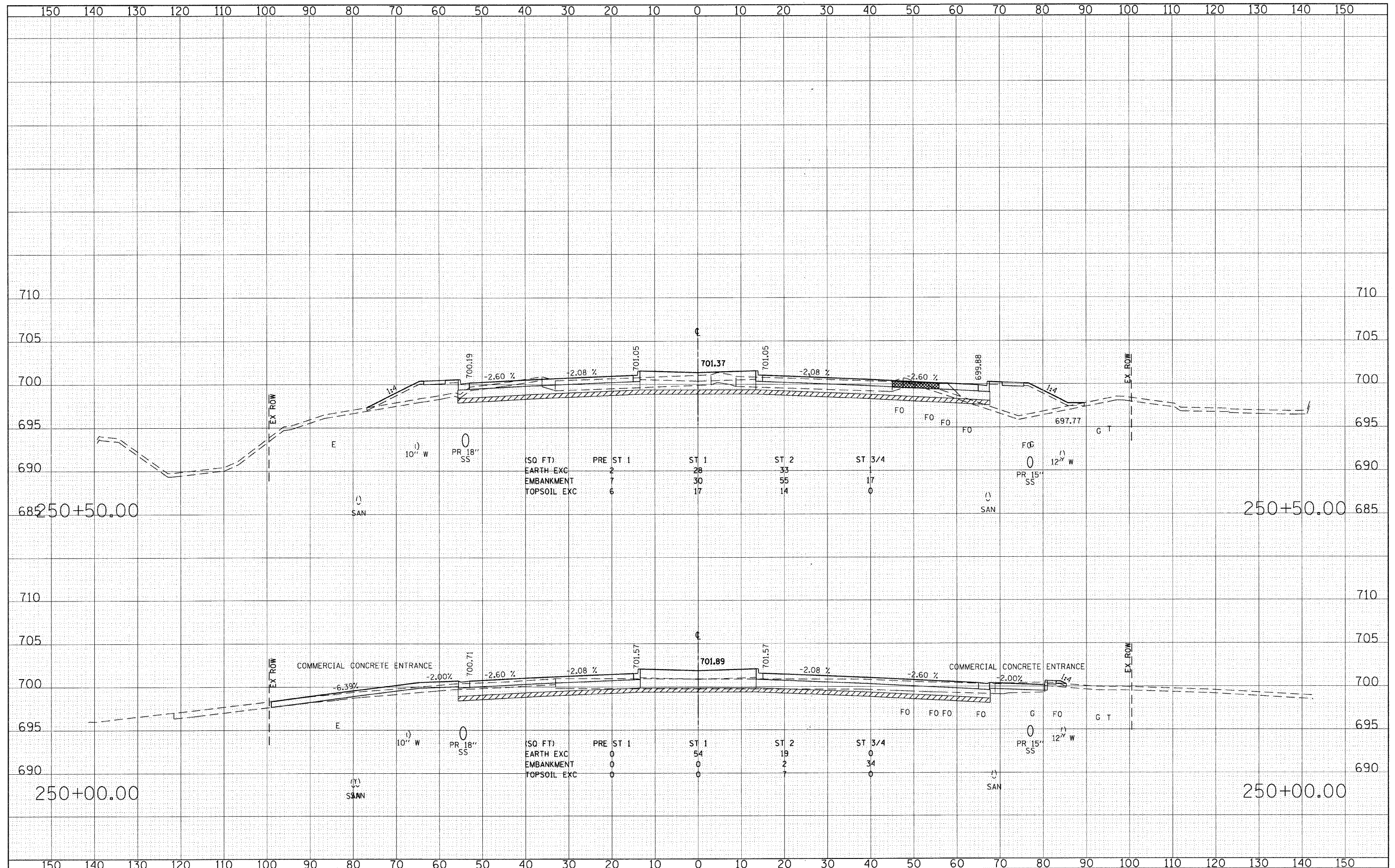


DATE	
BY	
FINAL SURVEY	
SURVEYED	
PLOTTED	
NOTE BOOK	
AREAS	
CHECKED	
NO.	

DATE	
BY	
ORIGINAL SURVEY	
SURVEYED	
PLOTTED	
NOTE BOOK	
AREAS	
CHECKED	
NO.	



FILE NAME = g:\ch87\0061\road\sheet\0160012-SHT-XSSHT1.dgn	USER NAME = BAW1tor.t	DESIGNED - JMG	REVISED -	STATE OF ILLINOIS DEPARTMENT OF TRANSPORTATION	CROSS SECTIONS - 22nd STREET			F.A. RTE. 1453	SECTION 55WRS	COUNTY DuPAGE	TOTAL SHEETS 362	SHEET NO. 318
PLOT SCALE = 10.0000' / IN.	CHECKED - JRH	REVISED -	REVISED -		SCALE: HORIZ: 1"=10'	SHEET NO. 318 OF 362 SHEETS	STA. 250+00.00 TO STA. 250+50.00	CONTRACT NO. 60D12				
PLOT DATE = 8/5/2009	DATE - 07/24/2009	REVISED -	REVISED -		FED. ROAD DIST. NO. 7 ILLINOIS FED. AID PROJECT							