

F.A.P. RTE.	SECTION	COUNTY	TOTAL SHEETS	SHEET NO.
332	9 Y-RS-8	WILL	25	1
ILLINOIS			CONTRACT NO. 60140	

**STATE OF ILLINOIS
DEPARTMENT OF TRANSPORTATION
DIVISION OF HIGHWAYS**

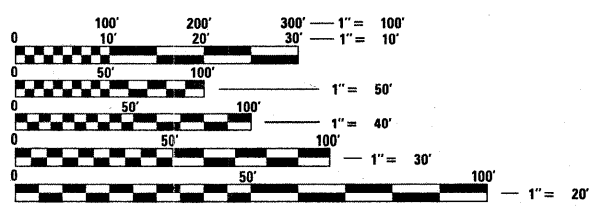
**PROPOSED
HIGHWAY PLANS**

**FAP 332 /IL RTE. 1
SECTION: 9 Y-RS-8
CHURCH ROAD TO IL. 394**

**RESURFACING
WILL COUNTY
C-91-035-10**

FOR INDEX OF SHEETS, SEE SHEET NO. 2

PROJECT IS LOCATED IN THE VILLAGE OF BEECHER.

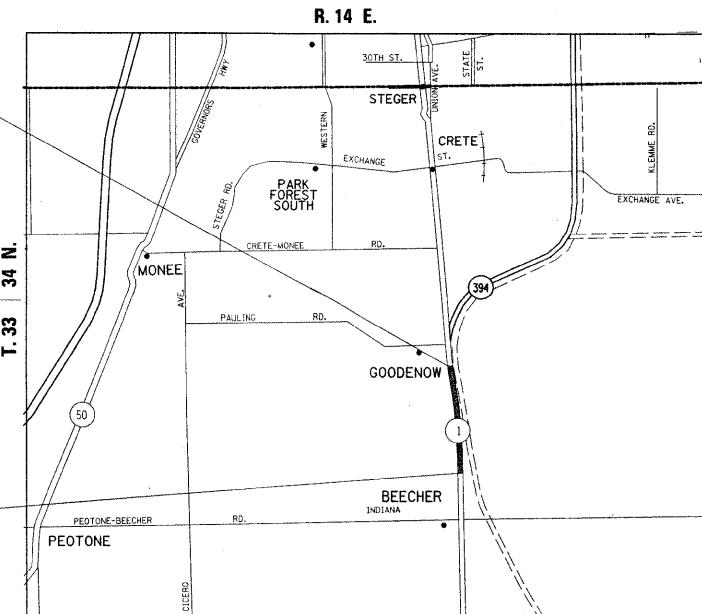


FULL SIZE PLANS HAVE BEEN PREPARED USING STANDARD ENGINEERING SCALES. REDUCED SIZED PLANS WILL NOT CONFORM TO STANDARD SCALES. IN MAKING MEASUREMENTS ON REDUCED PLANS, THE ABOVE SCALES MAY BE USED.

J.U.L.I.E.
JOINT UTILITY LOCATION INFORMATION FOR EXCAVATION
1-800-892-0123
OR 811

**PROJECT ENDS
STA. 142 + 51**

**PROJECT BEGINS
STA. 15 + 00**



CRETE & WASHINGTON TOWNSHIP

TRAFFIC DATA
2007 ADT = 9,200
SPEED LIMIT = 40 - 55 MPH

**PROJECT ENGINEER DAN WILGREEN (847) 705-4240
PROJECT MANAGER KEN ENG (847) 705-4247**

CONTRACT NO. 60140

GROSS AND NET LENGTH OF PROJECT = 12,751 FEET = 2.41 MILES

**STATE OF ILLINOIS
DEPARTMENT OF TRANSPORTATION
DIVISION OF HIGHWAYS**

SUBMITTED JANUARY 26, 20 10

Diana M. O'Keefe
DEPUTY DIRECTOR OF HIGHWAYS, REGION ENGINEER

March 9 20 10
Scott E. Stitt, P.E.
ACTING ENGINEER OF DESIGN AND ENVIRONMENT

March 19 20 10
Christine M. Reed
DIRECTOR OF HIGHWAYS, CHIEF ENGINEER

**PRINTED BY THE AUTHORITY
OF THE STATE OF ILLINOIS**