

F.A.U. RTE.	SECTION	COUNTY	TOTAL SHEETS	SHEET NO.
1362	3200 RS-3	COOK	25	1
FED. ROAD DIST. NO. 1	ILLINOIS	CONTRACT NO. 60J07		

STATE OF ILLINOIS  
DEPARTMENT OF TRANSPORTATION  
DIVISION OF HIGHWAYS

**PROPOSED  
HIGHWAY PLANS**  
F.A.U. 1362 (LAWRENCE AVE.)  
FORSTER AVE. TO DES PLAINES RIVER RD.  
RESURFACING (3P)  
SECTION: 3200RS-3

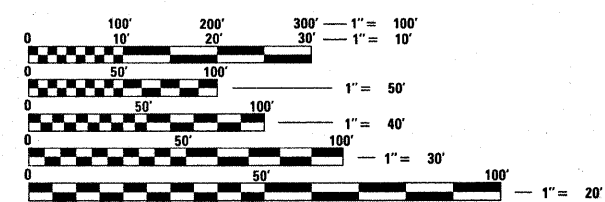
FOR INDEX OF SHEETS, SEE SHEET NO. 2

D-91-177-10



PROJECT LOCATED IN THE  
VILLAGE OF SCHILLER PARK

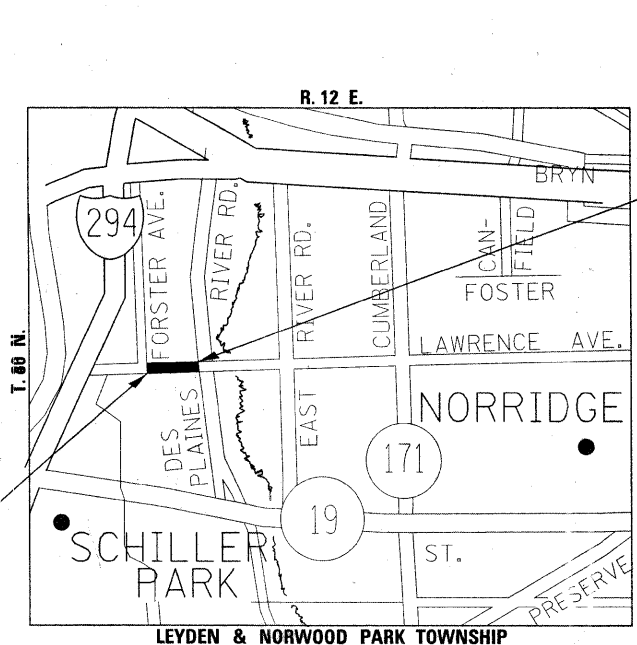
**COOK COUNTY**  
**C-91-177-10**



FULL SIZE PLANS HAVE BEEN PREPARED USING STANDARD ENGINEERING SCALES. REDUCED SIZED PLANS WILL NOT CONFORM TO STANDARD SCALES. IN MAKING MEASUREMENTS ON REDUCED PLANS, THE ABOVE SCALES MAY BE USED.

J.U.L.I.E.  
JOINT UTILITY LOCATION INFORMATION FOR EXCAVATION  
1-800-892-0123  
OR 811

PROJECT BEGINS  
STA. 10 + 69



PROJECT ENDS  
STA. 24 + 94

TRAFFIC DATA:  
2006 ADT - 18800 TO 19800  
SPEED LIMIT - 35 TO 45 MPH

GROSS AND NET LENGTH OF PROJECT = 1425 LIN FT = .27 MILES

PROJECT ENGINEER: JENPAI CHANG (847) 705-4432  
PROJECT MANAGER: KEN ENG (847) 705-4247

CONTRACT NO. 60J07

STATE OF ILLINOIS  
DEPARTMENT OF TRANSPORTATION  
DIVISION OF HIGHWAYS

SUBMITTED FEBRUARY 1, 2010

*Diana M. O'Keefe*  
DEPUTY DIRECTOR OF HIGHWAYS, REGION ENGINEER

March 19, 2010  
*Scott E. Stett, P.E.*  
ENGINEER OF DESIGN AND ENVIRONMENT

March 19, 2010  
*Christine M. Reed*  
DIRECTOR OF HIGHWAYS, CHIEF ENGINEER

PRINTED BY THE AUTHORITY  
OF THE STATE OF ILLINOIS