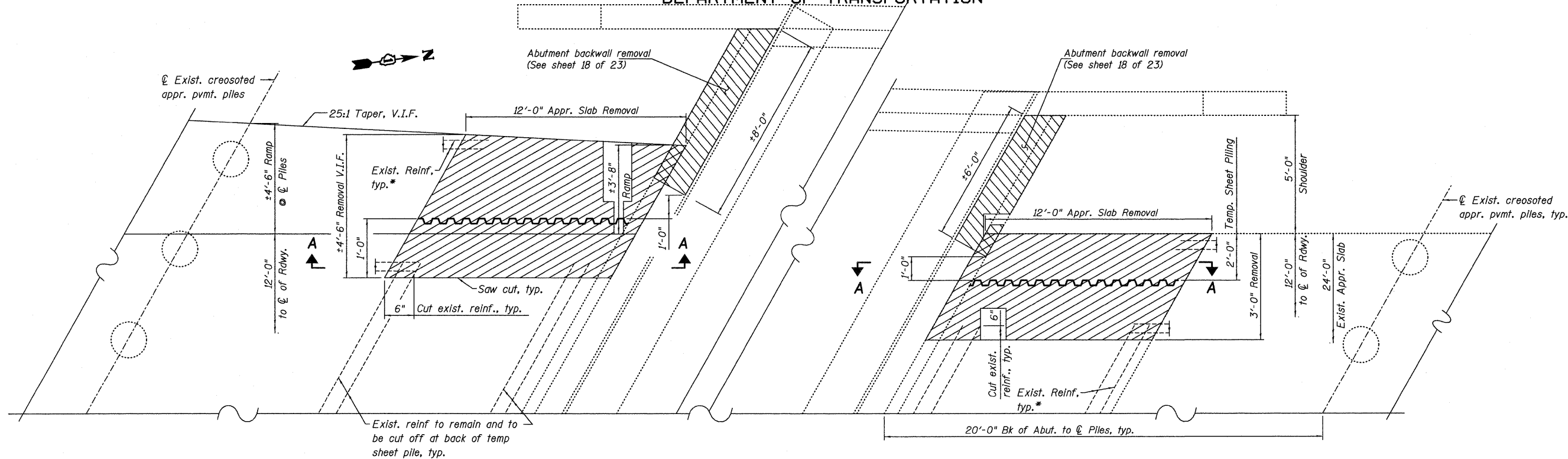


STATE OF ILLINOIS
DEPARTMENT OF TRANSPORTATION



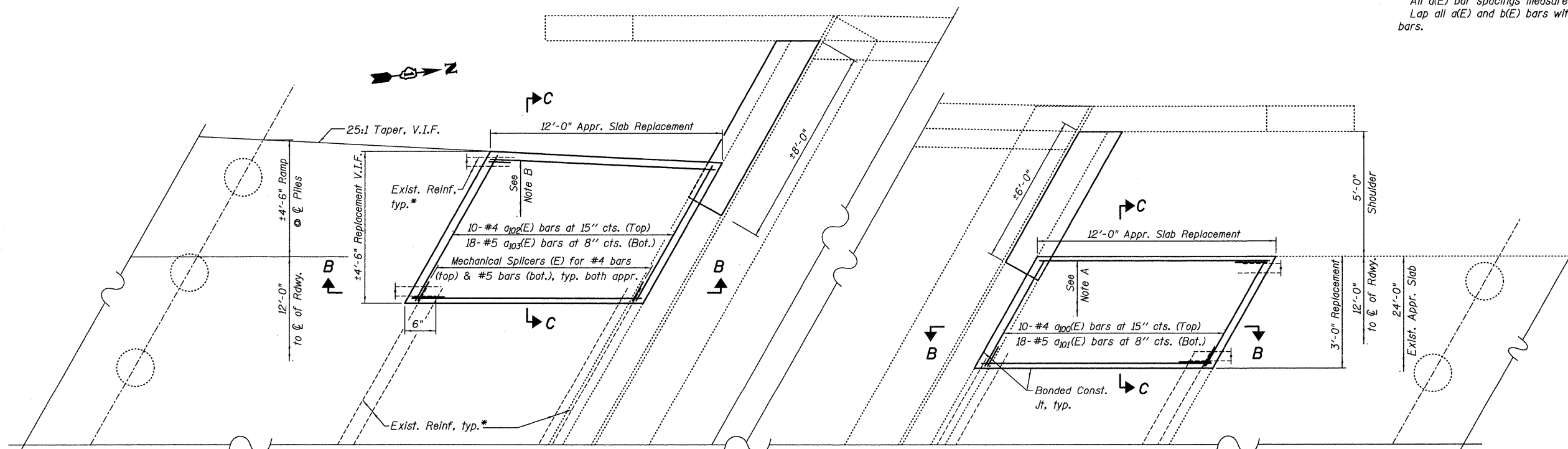
SB BRIDGE SOUTH ABUTMENT

SB BRIDGE NORTH ABUTMENT

PARTIAL PLAN APPROACH SLAB REMOVAL

NOTES

See sheet 14 of 23 for Sections A-A, B-B, C-C and Bill of Material.
All a(E) bar spacings measured parallel to \O Rdwy.
Lap all a(E) and b(E) bars with exist. cut reinforcement bars.



SB BRIDGE SOUTH ABUTMENT

SB BRIDGE NORTH ABUTMENT

PARTIAL PLAN APPROACH SLAB REPLACEMENT

Note A: 4-#4 $b_{100}(E)$ bars at 12" cts. (Top)
8-#9 $b_{101}(E)$ bars at 5" cts. (Bot.)
Mechanical Splicers (E) for #4 bars (top) and #9 bars (bot.)
Note B: 5-#4 $b_{100}(E)$ bars at 12" cts. (Top)
12-#9 $b_{101}(E)$ bars at 5" cts. (Bot.)
Mechanical Splicers (E) for #4 bars (top) and #9 bars (bot.)

*Use mechanical splicers on all a(E) and b(E) bars with exist. reinf., typ.

(Sheet 1 of 2)
BRIDGE APPROACH SLAB DETAIL
STRUCTURE NO. 99-0039 (S.B.)

DESIGNED -	SLV
CHECKED -	DJB
DRAWN -	SLV
CHECKED -	DJB

LONCO, INC.
CONSULTING ENGINEERS
1560 WALL ST., SUITE 222
NAPERVILLE, ILLINOIS 60563 PH: (630) 577-9100

SHEET NO. 13 23 SHEETS	F.A.I. RTE.	SECTION	COUNTY	TOTAL SHEETS	SHEET NO.
	57	99-2VB-I-1	WILL	38	23
C-91-215-10			CONTRACT NO. 60J25		
ILLINOIS FED. AID PROJECT					