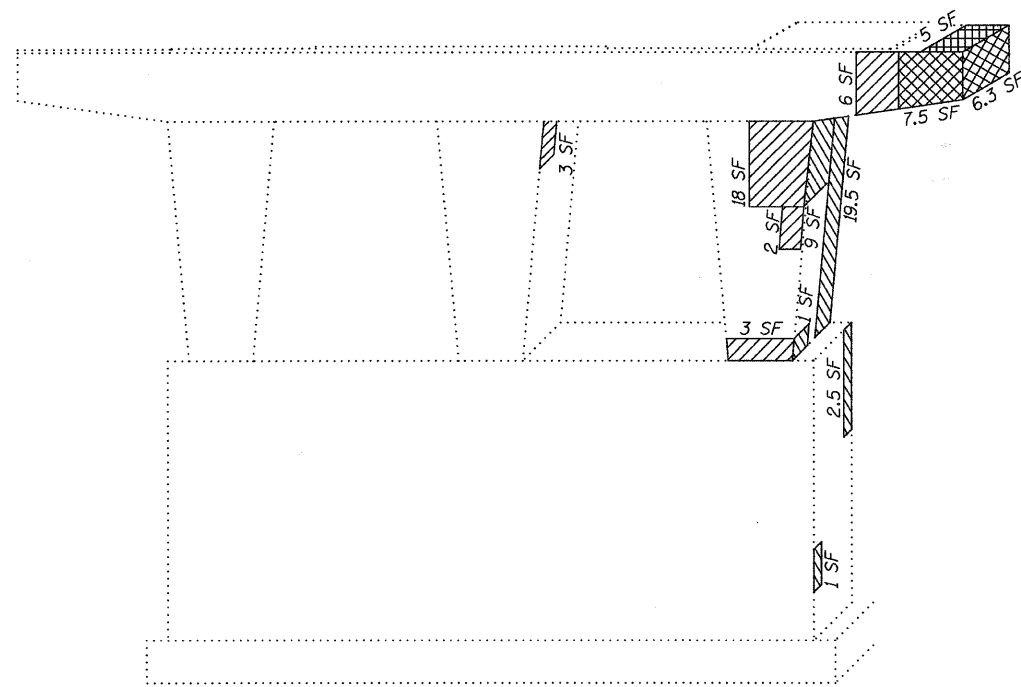
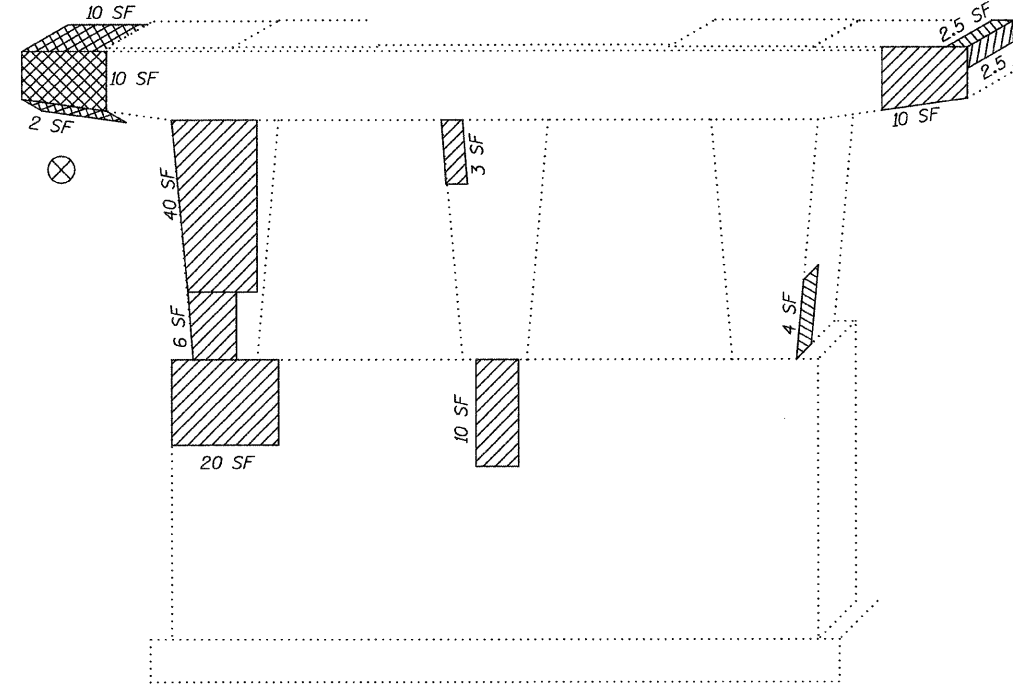


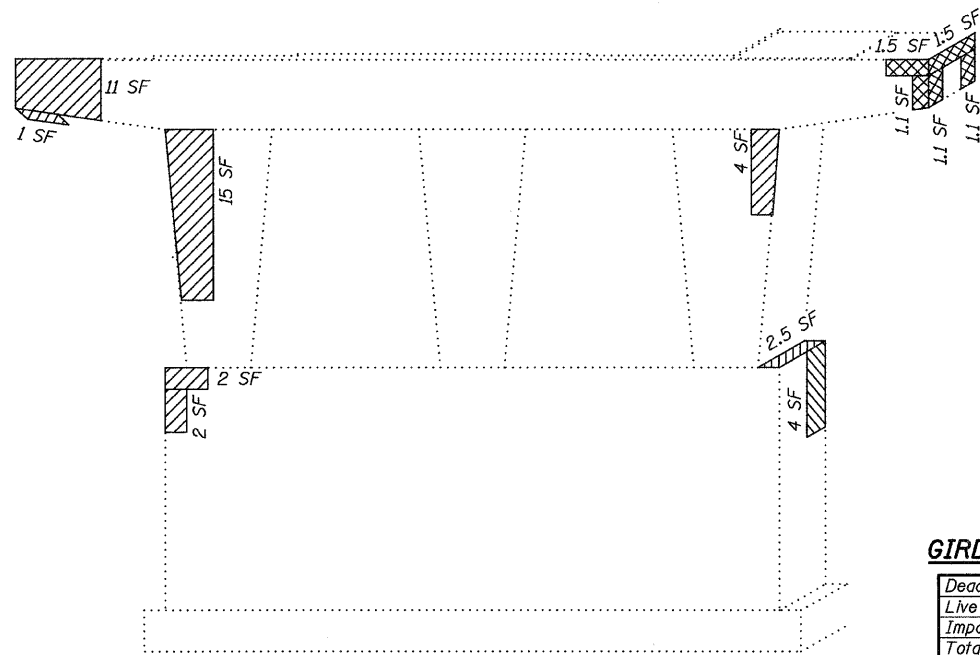
STATE OF ILLINOIS  
DEPARTMENT OF TRANSPORTATION



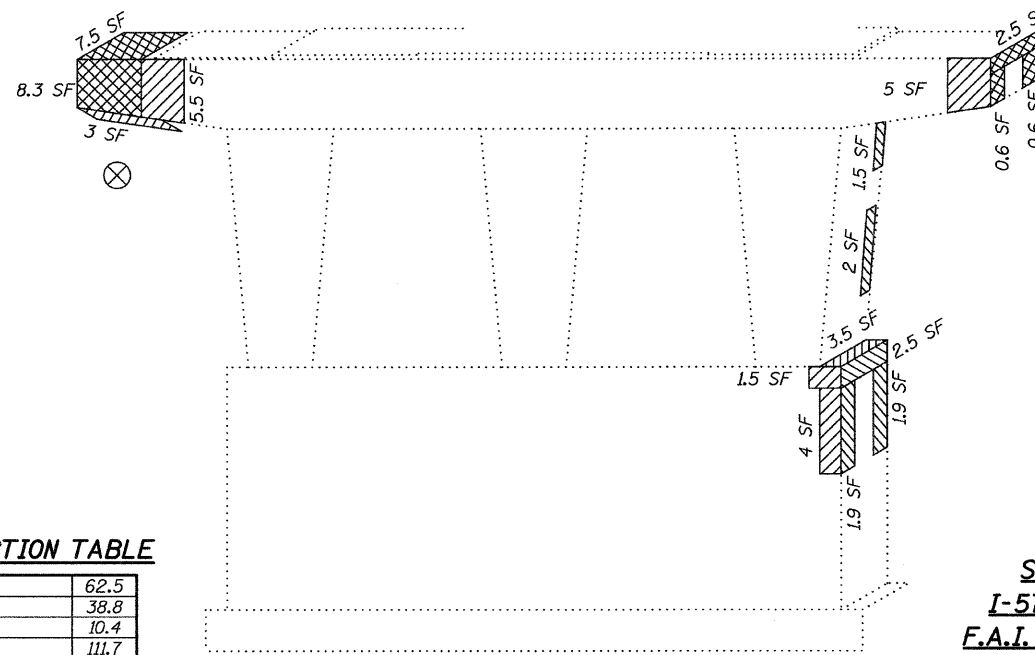
**SB BRIDGE - PIER 1 ELEVATION**  
(North Face Looking South)



**SB BRIDGE - PIER 1 ELEVATION**  
(South Face Looking North)



**SB BRIDGE - PIER 2 ELEVATION**  
(North Face Looking South)



**SB BRIDGE - PIER 2 ELEVATION**  
(South Face Looking North)

**GIRDER REACTION TABLE**

Dead Load (k)	62.5
Live Load (K)	38.8
Impact (k)	10.4
Total (k)	111.7
Min. Jack Capacity (Tons)	65

**LEGEND**

- ⊗ Temporary Shoring and Cribbing
- ▨ Structural Repair of Concrete (Depth equal to or less than 5") = 235 SF
- ▩ Structural Repair of Concrete (Depth greater than 5") = 60 SF

Notes: Repairs of the existing piers shall include but not limited to the areas shown. The actual area to be repaired will be determined by the Engineer at the time of construction. When performing the pier repair, the structure shall not be jacked from the pier, the weight must be taken off the pier in the area of the repairs. Concrete must be cured to minimum strength before the weight can be put back on the pier, according to the special provisions.

DESIGNED - CMV
CHECKED - SDS
DRAWN - DLH
CHECKED - CMV

**WHKS & CO.**  
ENGINEERING  
7018 KINGSMILL CT.,  
SPRINGFIELD, IL  
(217) 483-9457  
DESIGN FIRM #184001038

(Sheet 2 of 2)  
**SB BRIDGE - PIER REPAIRS**  
**I-57 OVER ABANDONED RAILROAD**  
**F.A.I. RTE. 57 - SECTION 99-2VB-I-1**  
**WILL COUNTY**  
**STATION 942+54.75**  
**STRUCTURE NO. 099-0038 (NB)**  
**STRUCTURE NO. 099-0039 (SB)**

SHEET NO. 20	F.A.I. RTE.	SECTION	COUNTY	TOTAL SHEETS	SHEET NO.
	57	99-2VB-I-1	WILL	38	30
23 SHEETS	C-91-215-10		CONTRACT NO. 60J25		
ILLINOIS FED. AID PROJECT					