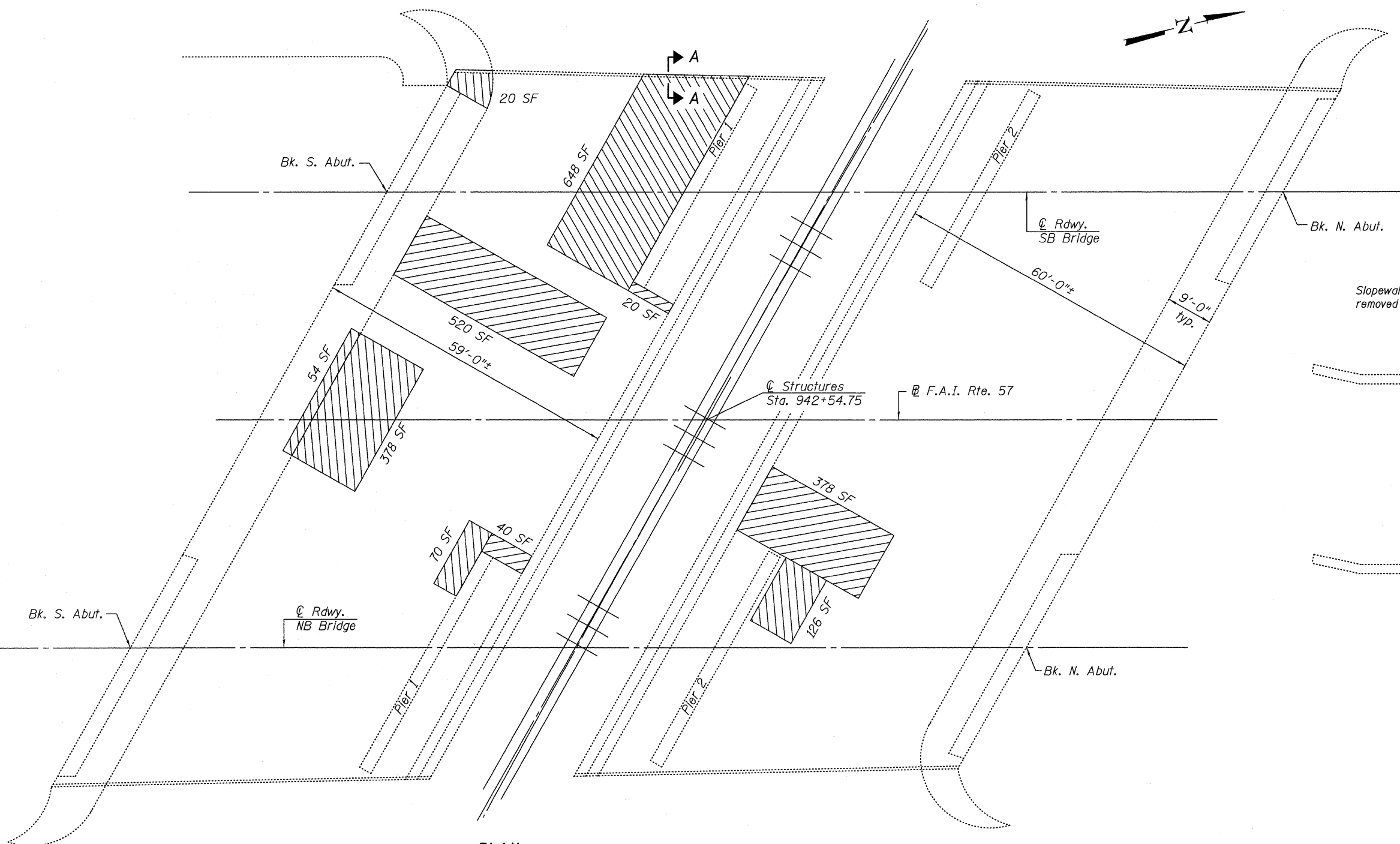
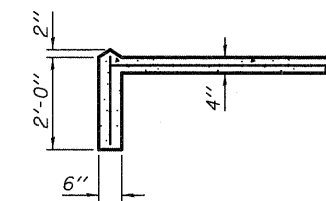


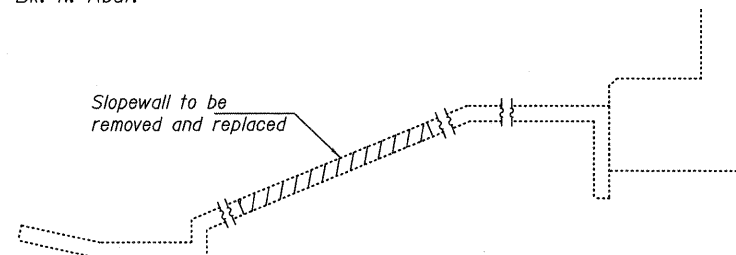
STATE OF ILLINOIS
DEPARTMENT OF TRANSPORTATION



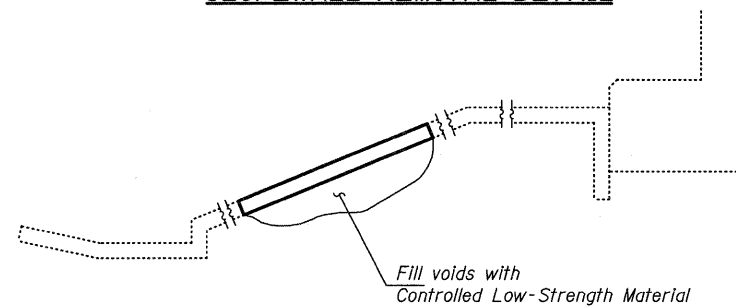
PLAN



SECTION A-A



SLOPEWALL REMOVAL DETAIL



SLOPEWALL REPLACEMENT DETAIL

**BILL OF MATERIAL
(TWO STRUCTURES)**

Item	Unit	Quantity
Slopedwall Removal	Sq. Yd.	247
Slopedwall, 4 inch	Sq. Yd.	247
Controlled Low Strength Material	Cu. Yd.	83

**SLOPEWALL REPAIR
I-57 OVER ABANDONED RAILROAD
F.A.I. RTE. 57 - SECTION 99-2VB-I-1
WILL COUNTY
STATION 942+54.75
STRUCTURE NO. 099-0038 (NB)
STRUCTURE NO. 099-0039 (SB)**

DESIGNED - CMV
CHECKED - SDS
DRAWN - DLH
CHECKED - CMV

WHKS & CO.
ENGINEERING
7018 KINGSMILL CT.,
SPRINGFIELD, IL
(217) 483-9457
DESIGN FIRM #184001036

LEGEND
 Slopedwall repair areas

Notes:
Voids under existing slopedwall shall be filled with Controlled Low-Strength Material.
Existing wire fabric extending into removal areas shall be cleaned, straightened and incorporated into the new construction. Cost included with Slopedwall, 4 inch.
Slopedwall shall be reinforced with welded wire fabric, 6" x 6" - W4.0 x W4.0, weighing 58lbs per 100 sq. ft.
Existing and new reinforcement shall be lapped a minimum of 6".

SHEET NO. 21	F.A.I. RTE.	SECTION	COUNTY	TOTAL SHEETS	SHEET NO.
	57	99-2VB-I-1	WILL	38	31
23 SHEETS	C-91-215-10		CONTRACT NO. 60J25		
ILLINOIS FED. AID PROJECT					