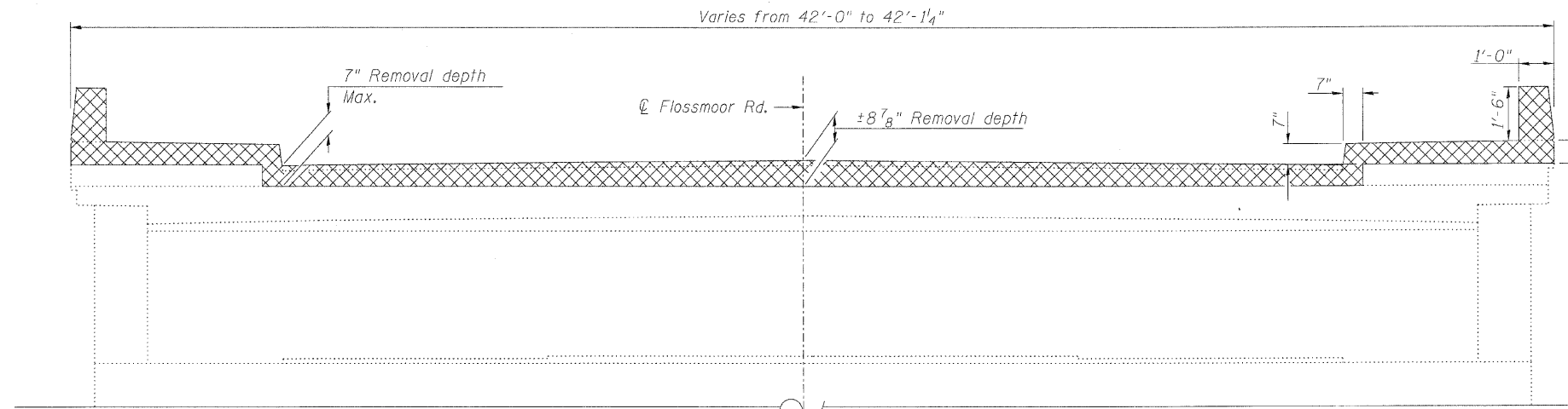
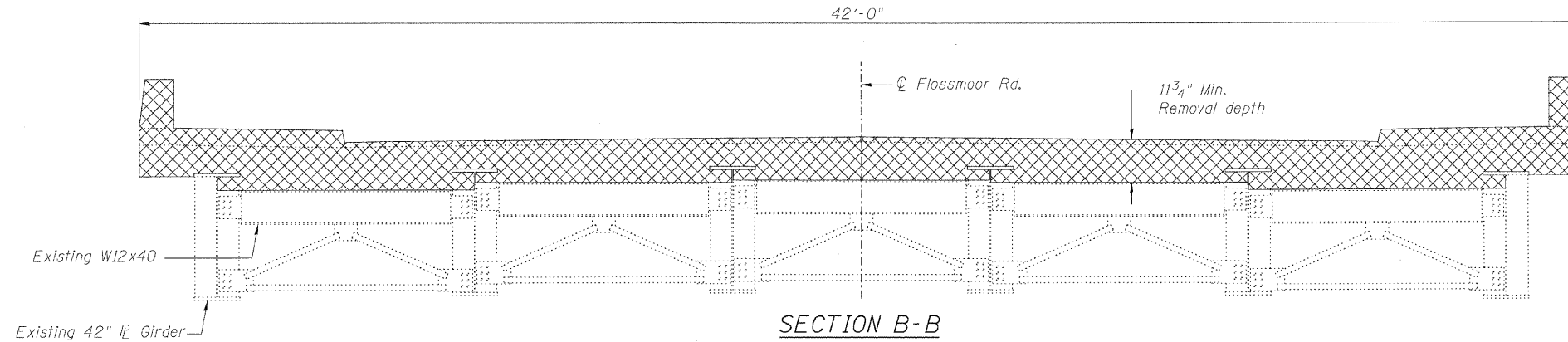


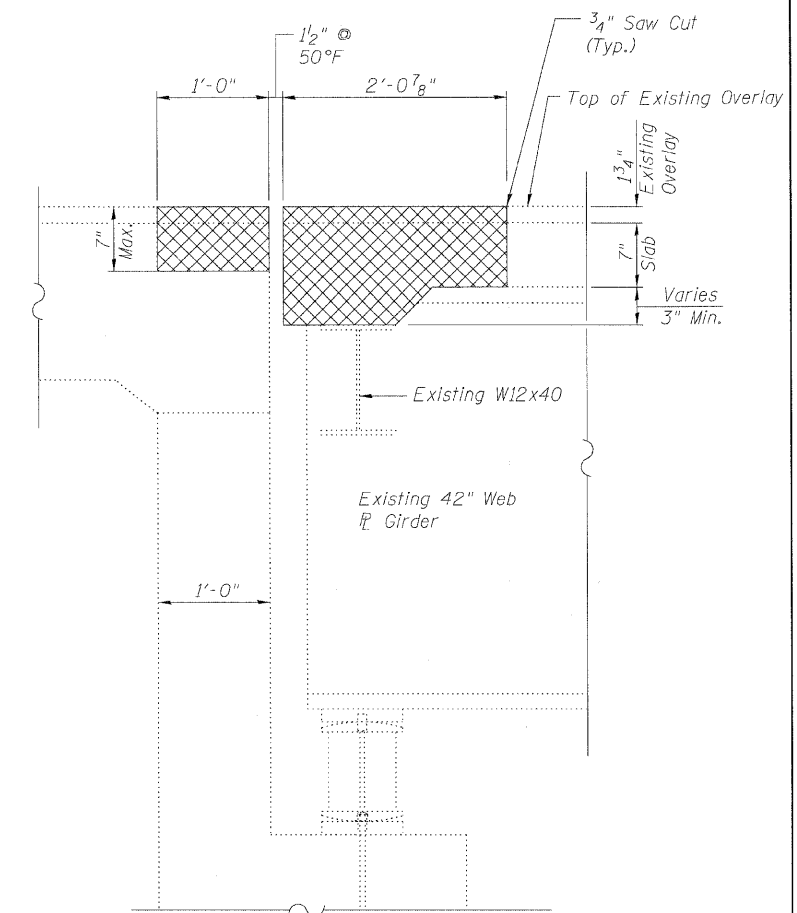
STATE OF ILLINOIS
DEPARTMENT OF TRANSPORTATION



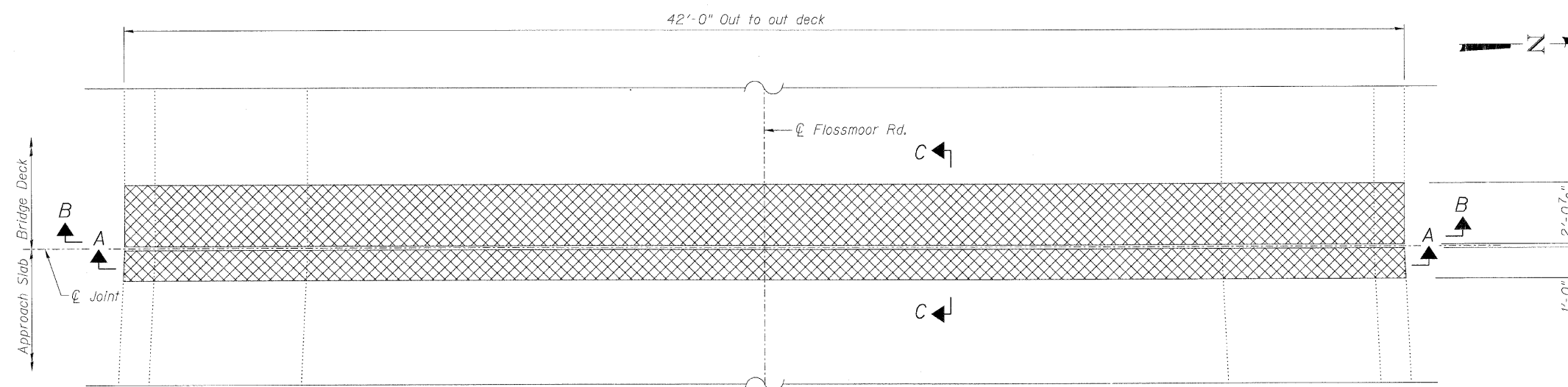
SECTION A-A



SECTION B-B



SECTION C-C



PLAN

(East abutment shown, west abutment mirrored about © Joint)



Notes:

1. Cross hatched area indicates concrete removal.
2. Existing reinforcement bars in the concrete removal area extending in new construction shall be cleaned and incorporated into the new construction. Cost included with Concrete Removal.
3. Any reinforcement bars that are damaged during concrete removal operations shall be repaired or replaced using an approved bar splicer or anchorage system, in accordance with IDOT Standard Specifications Article 501.03. Cost included in "Concrete Removal"
4. See sheet 2 or 10 for Stage Removal Details.

BILL OF MATERIAL

Item	Unit	Total
Concrete Removal	Cu. Yd.	9.7

EXPANSION JOINT CONCRETE REMOVAL
STRUCTURE NO. 016-1099

LIN ENGINEERING, LTD. Consulting Engineers Chatham, Illinois	SHEET NO. 5	F.A.I. RTE.	SECTION	COUNTY	TOTAL SHEETS	SHEET NO.
	10 SHEETS	57	0607-1007 HB-I	COOK	29	12
				CONTRACT NO. 60J26		
FED. ROAD DIST. NO. _ ILLINOIS FED. AID PROJECT						