

FOR INDEX OF SHEETS, SEE SHEET NO. 2.

PROJECT LOCATED IN THE VILLAGE OF NORTHFIELD

TRAFFIC DATA

ADT = 24,700 VEHICLES
POSTED SPEED LIMIT = 35 MPH

STATE OF ILLINOIS

DEPARTMENT OF TRANSPORTATION
DIVISION OF HIGHWAYS

**PROPOSED
HIGHWAY PLANS**

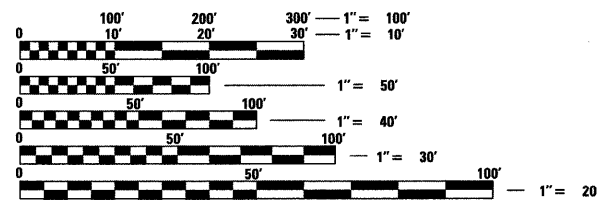
FAI-94 (I-94 / EDENS EXPRESSWAY)
SECTION 1010.1-I-2
AT WILLOW ROAD
BRIDGE DECK OVERLAY AND JOINT REPAIRS
COOK COUNTY
C-91-220-10

| F.A.I. RTE. | SECTION | COUNTY | TOTAL SHEETS | SHEET NO. |
|---------------------|------------|--------------|--------------|-----------|
| 94 | 1010.1-I-2 | COOK | 37 | 1 |
| FED. ROAD DIST. NO. | ILLINOIS | CONTRACT NO. | 60J30 | |

D-91-220-10



LOCATION OF SECTION INDICATED THUS: - [black rectangle] -



FULL SIZE PLANS HAVE BEEN PREPARED USING STANDARD ENGINEERING SCALES. REDUCED SIZED PLANS WILL NOT CONFORM TO STANDARD SCALES. IN MAKING MEASUREMENTS ON REDUCED PLANS, THE ABOVE SCALES MAY BE USED.

J.U.L.I.E.
JOINT UTILITY LOCATION INFORMATION FOR EXCAVATION
1-800-892-0123
OR 811

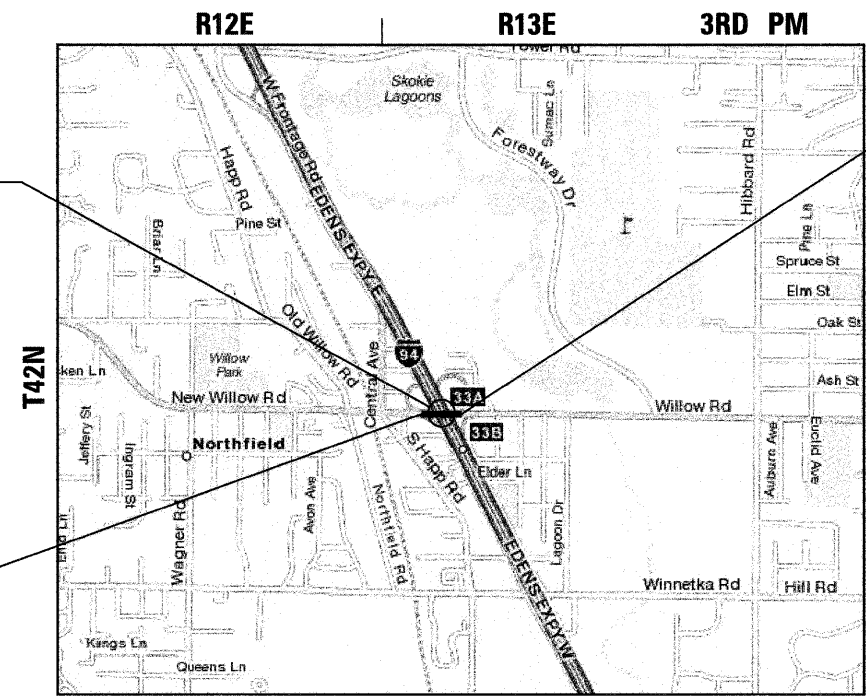
PROJECT ENGINEER: CRAIG BAUER (847) 705-4265
PROJECT MANAGER: LONG TRAN (847) 705-4232

CONTRACT NO. 60J30

SN 016-0536
WILLOW ROAD OVER I-94
STA. 10 + 00.00

PROJECT BEGINS
STA. 8 + 43.83

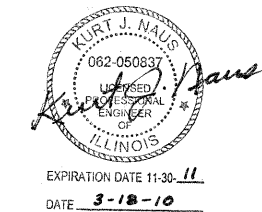
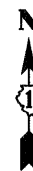
PROJECT ENDS
STA. 11 + 50.43



NEW TRIER TOWNSHIP

LAYOUT MAP
SCALE: 1 IN = 0.25 MI

GROSS LENGTH OF PROJECT = 306.60 LIN FT = 0.058 MILES
NET LENGTH OF PROJECT = 306.60 LIN FT = 0.058 MILES



STATE OF ILLINOIS
DEPARTMENT OF TRANSPORTATION
DIVISION OF HIGHWAYS

SUBMITTED MARCH 18, 2010
Diane M. O'Keefe
DEPUTY DIRECTOR OF HIGHWAYS, REGION ENGINEER

April 9, 2010
Scott E. Stitt, P.E.
ENGINEER OF DESIGN AND ENVIRONMENT

April 9, 2010
Christine M. Reed
DIRECTOR OF HIGHWAYS, CHIEF ENGINEER

PRINTED BY THE AUTHORITY
OF THE STATE OF ILLINOIS

alfred benesch & company
Engineers • Surveyors • Planners
205 North Michigan Avenue, Suite 2400
Chicago, Illinois 60601
312-565-0450