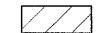

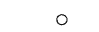
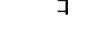
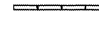
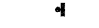
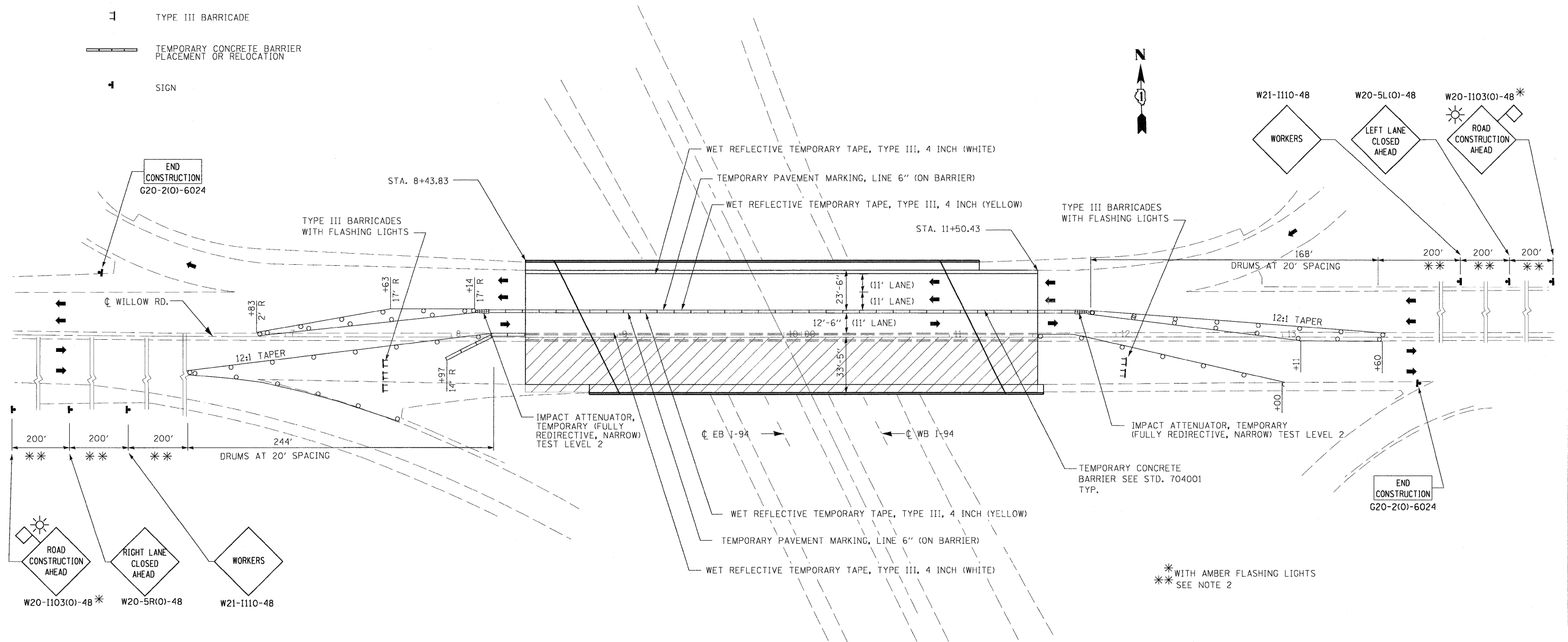


LEGEND:

-  WORK ZONE
-  TRAFFIC ARROW
-  TYPE II BARRICADES, DRUMS, OR VERTICAL PANEL W/ STEADY BURNING MONODIRECTIONAL LIGHT
-  TYPE III BARRICADE
-  TEMPORARY CONCRETE BARRIER PLACEMENT OR RELOCATION
-  SIGN



* WITH AMBER FLASHING LIGHTS
 ** SEE NOTE 2

NOTES:

1. MAINTENANCE OF TRAFFIC TO BE PAID FOR AS "TRAFFIC CONTROL AND PROTECTION".
2. CONTRACTOR TO PLACE SIGNS AS DIRECTED BY ENGINEER.
3. WORK ZONE ENTRANCES AND EXITS TO BE DETERMINED IN THE FIELD BY THE ENGINEER.
4. SEE STAGE CONSTRUCTION DETAILS IN STRUCTURAL PLANS FOR ADDITIONAL INFORMATION.

PLAN - STAGE 1

FILE NAME *	DESIGNED - EJA	REVISED -
	DRAWN - EJA	REVISED -
USER NAME *	CHECKED - AJP	REVISED -
PLOT DATE = 03/22/2010	DATE - 3/19/10	REVISED -

benesch

**STATE OF ILLINOIS
 DEPARTMENT OF TRANSPORTATION**

WILLOW ROAD MAINTENANCE OF TRAFFIC PLAN STAGE 1	
SCALE: 1"=30'	SHEET NO. 1 OF 2 SHEETS
STA. _____	TO STA. _____

F.A.I. RTE.	SECTION	COUNTY	TOTAL SHEETS	SHEET NO.
94	1010.1-1-2	COOK	37	6
FED. ROAD DIST. NO.			ILLINOIS FED. AID PROJECT	
			CONTRACT NO. 60J30	