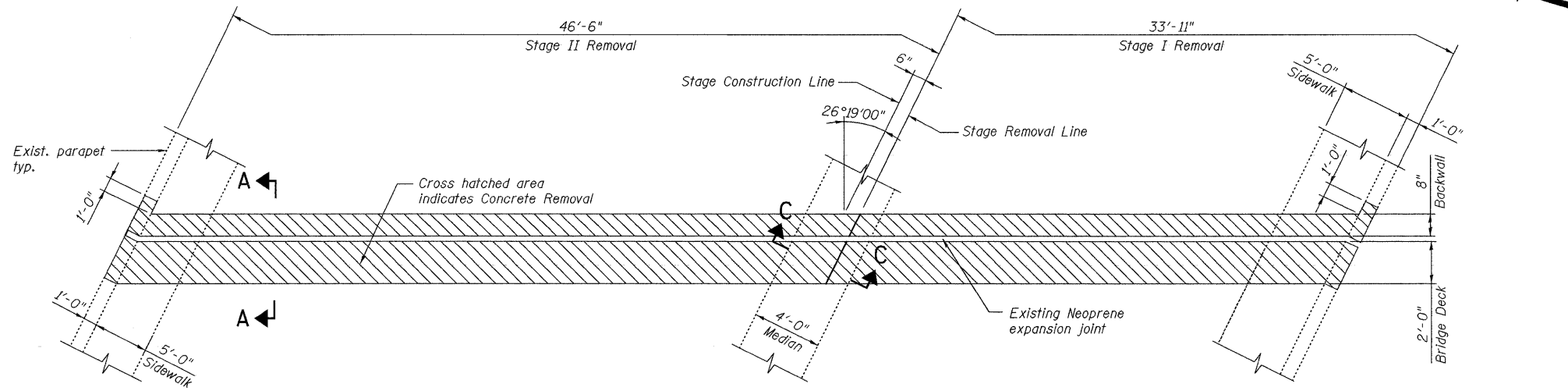
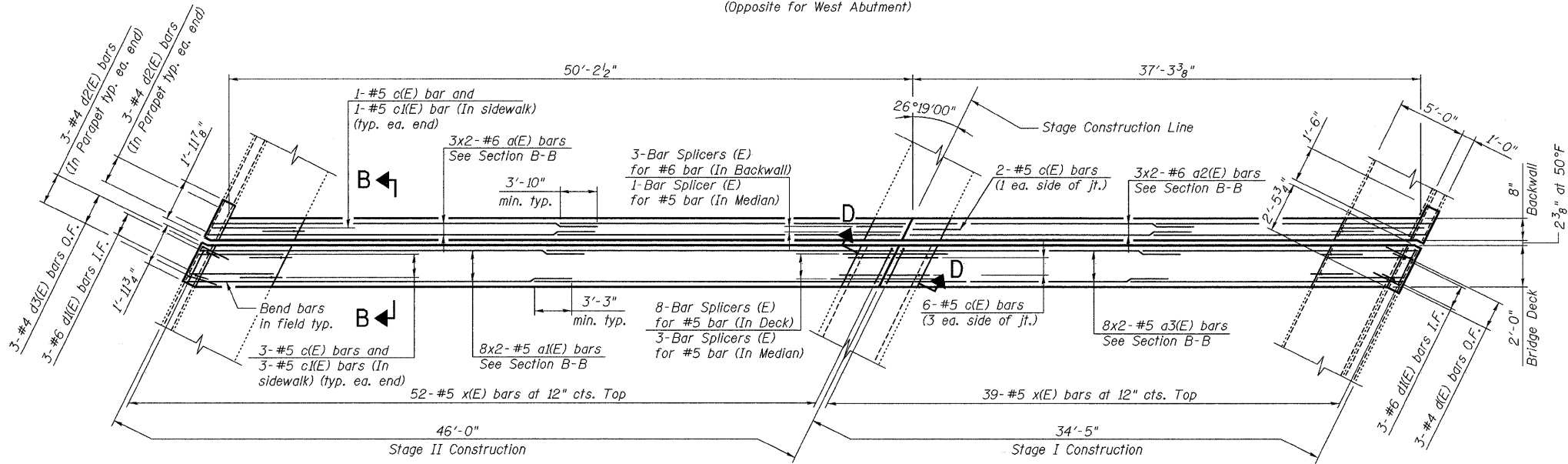


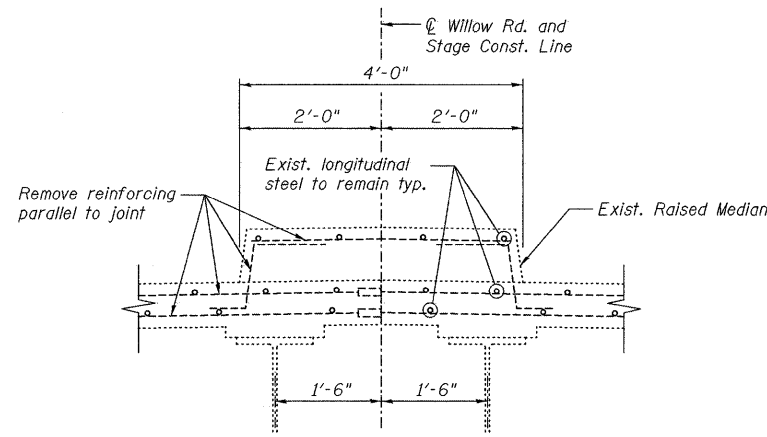
STATE OF ILLINOIS
DEPARTMENT OF TRANSPORTATION



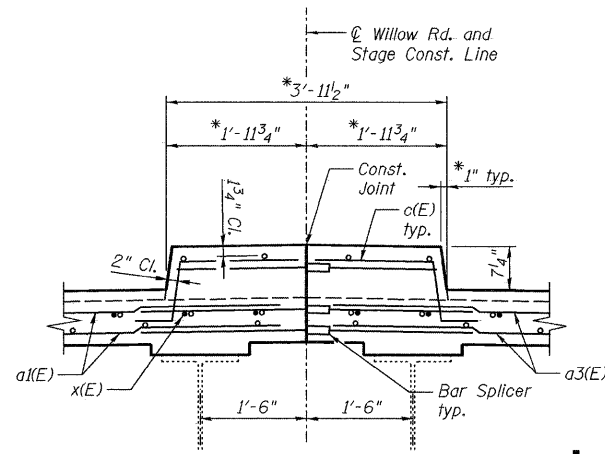
EXISTING PARTIAL PLAN AT EAST ABUTMENT
(Opposite for West Abutment)



PROPOSED PARTIAL PLAN AT EAST ABUTMENT
(Opposite for West Abutment)



SECTION C-C

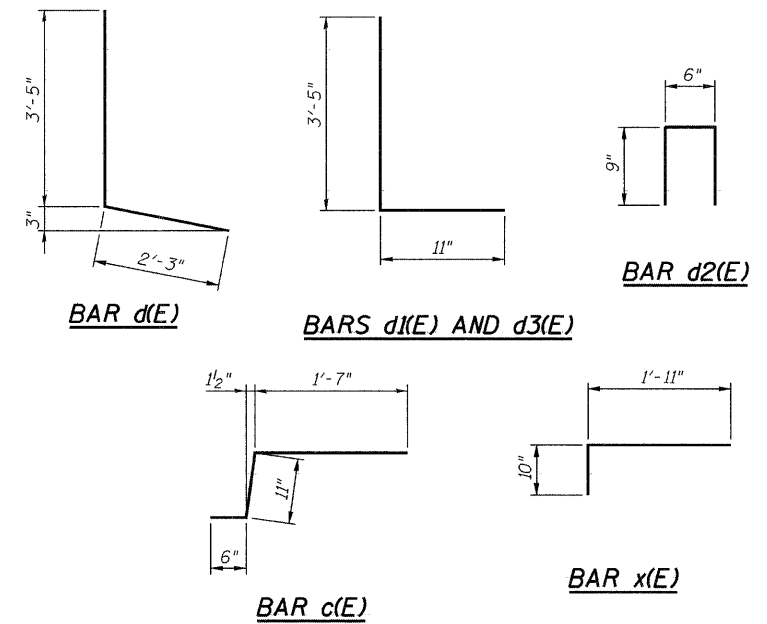


SECTION D-D

*Dimensions shown are taken at top of new overlay. Contractor to match profile of existing raised median.

BILL OF MATERIAL

| Bar | No. | Size | Length | Shape |
|----------------------------------|-----|---------|---------|-------|
| a(E) | 12 | #6 | 27'-7" | — |
| a1(E) | 32 | #5 | 27'-3" | — |
| a2(E) | 12 | #6 | 21'-1" | — |
| a3(E) | 32 | #5 | 20'-10" | — |
| c(E) | 32 | #5 | 3'-0" | ┌ |
| c1(E) | 16 | #5 | 5'-6" | — |
| d(E) | 6 | #4 | 5'-8" | ┌ |
| d1(E) | 12 | #6 | 4'-4" | ┌ |
| d2(E) | 24 | #4 | 2'-0" | ┌ |
| d3(E) | 6 | #4 | 4'-4" | ┌ |
| x(E) | 182 | #5 | 2'-9" | ┌ |
| Item | | Unit | Total | |
| Concrete Removal | | Cu. Yd. | 21.2 | |
| Concrete Superstructure | | Cu. Yd. | 23.4 | |
| Reinforcement Bars, Epoxy Coated | | Pound | 3,350 | |



Notes:

- I.F. denotes Inside Face.
O.F. denotes Outside Face.
- x(E) bar spacing measured along skew.
- Cut Bar Splicers in field to fit in median, as req'd.
- Bars indicated thus 3x2-#6 etc. indicates 3 lines of bars with 2 lengths per line.
- Work this sheet with Expansion Joint Details sheet and Bar Splicer Assembly Details sheet.

| | |
|------------|-----|
| DESIGNED - | JLS |
| CHECKED - | KWS |
| DRAWN - | RMG |
| CHECKED - | KWS |

| | | | | | |
|--------------------------|--------------------|-----------------------|------------------|--------------------|-----------------|
| SHEET NO. 5 17 SHEETS | F.A.I. RTE. 94 | SECTION 1010.1-1-2 | COUNTY COOK | TOTAL SHEETS 37 | SHEET NO. 17 |
| | CONTRACT NO. 60J30 | | | | |
| FED. ROAD DIST. NO. | | ILLINOIS | FED. AID PROJECT | | |

benesch

alfred benesch & company
Engineers • Surveyors • Planners
205 North Michigan Avenue, Suite 2400
Chicago, Illinois 60601
312-565-0450 Job No. 10032.13