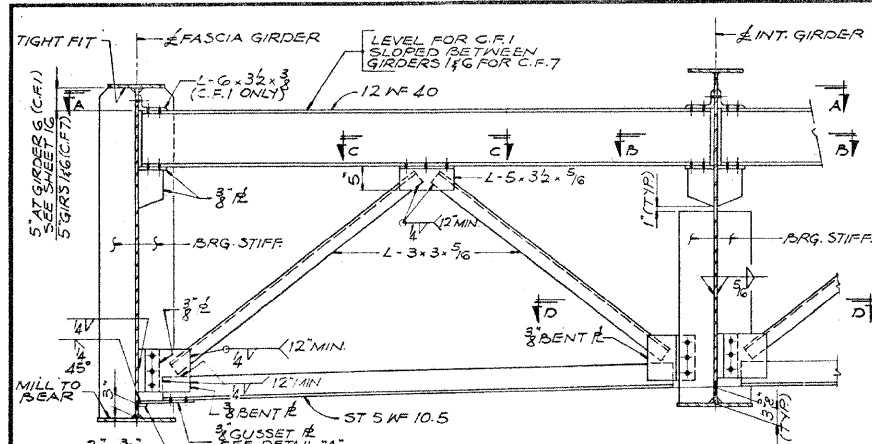


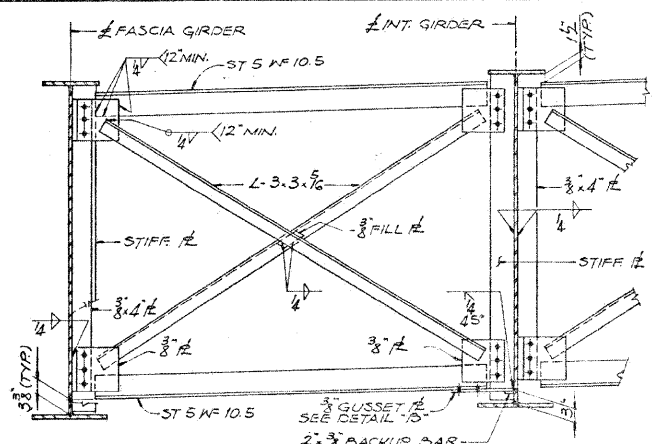
STATE OF ILLINOIS  
DEPARTMENT OF TRANSPORTATION

ROUTE NO.	SECTION	COUNTY	TOTAL SHEETS	SHEET NO.
F.A.I. 90	22-HB-3	DUPAGE	87	34
STA.	TO STA.			
E.P.A. REG. NO. 4	ILLINOIS		PROJECT	

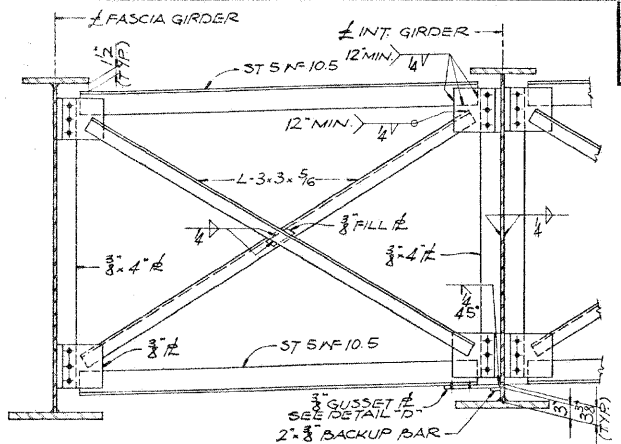
SHEET 13 OF 23



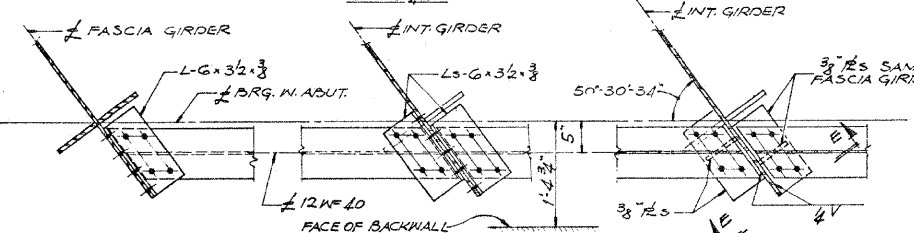
CROSS FRAME 'C.F.1'  
CROSS FRAME 'C.F.7' SIMILAR  
SCALE: 3/4"=1'-0"



CROSS FRAME 'C.F.2'  
CROSS FRAMES 'C.F.2A', 'C.F.4' SIMILAR  
SCALE: 3/4"=1'-0"

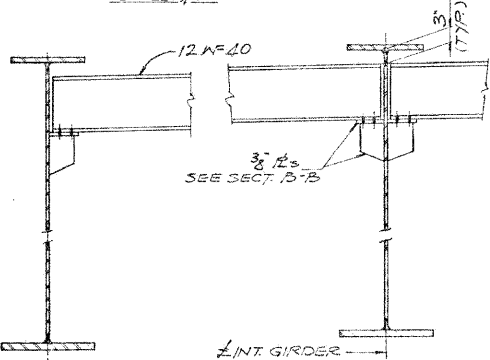


CROSS FRAME 'C.F.3'  
SCALE: 3/4"=1'-0"

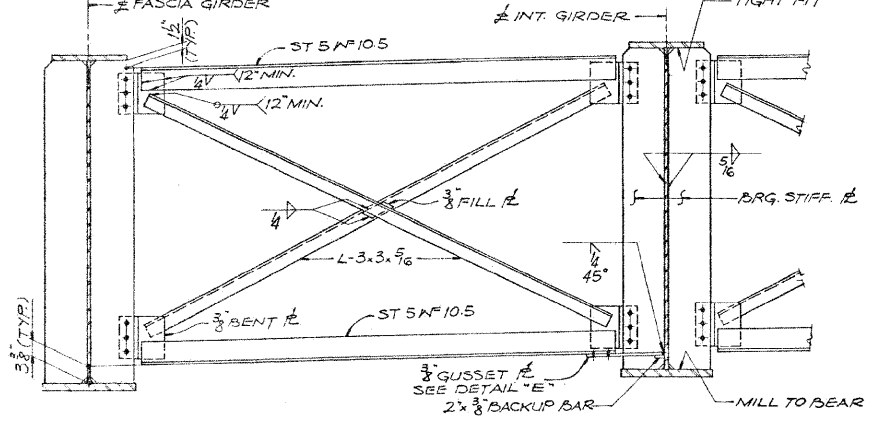


SECTION A-A  
SCALE: 1"=1'-0"

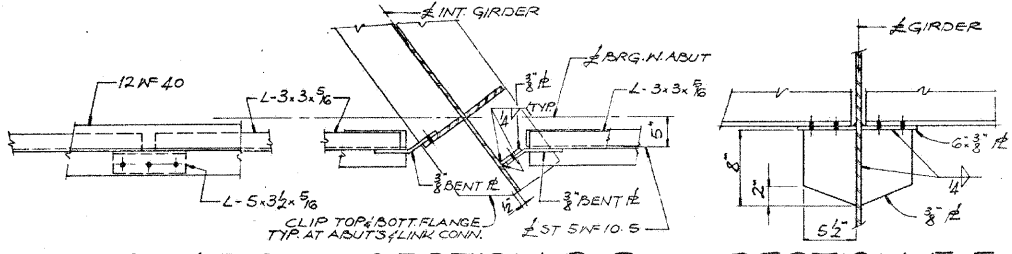
SECTION B-B  
SCALE: 1 1/2"=1'-0"



DIAPHRAGM 'D1'  
SCALE: 3/4"=1'-0"



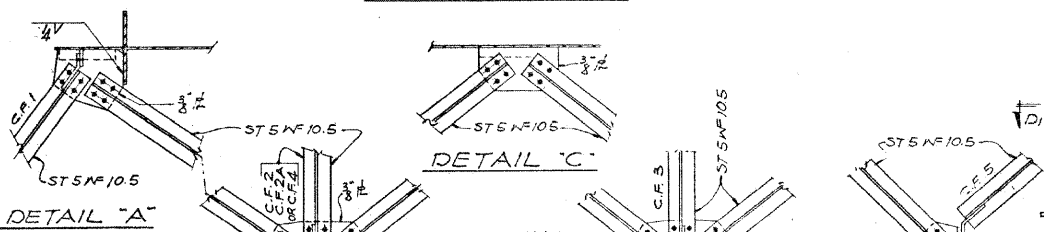
CROSS FRAME 'C.F.5'  
SCALE: 3/4"=1'-0"



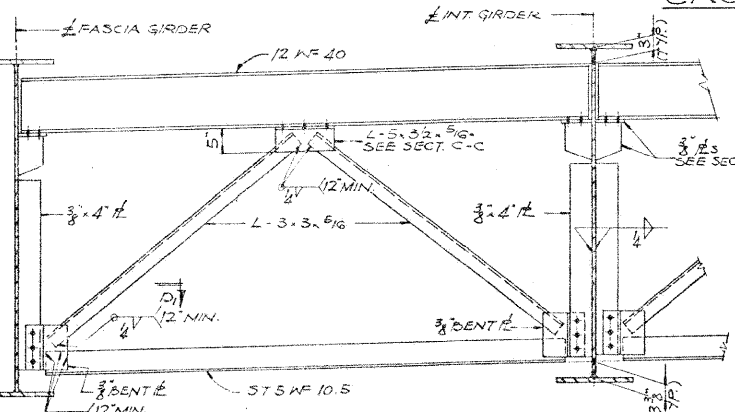
SECTION C-C  
SCALE: 1"=1'-0"

SECTION D-D  
SECTION 'D1', 'D' SIMILAR

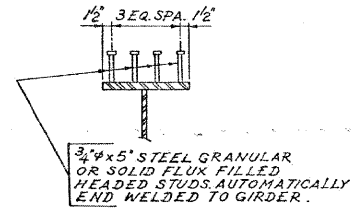
SECTION E-E  
SCALE: 1"=1'-0"



BOTTOM LATERAL BRACING CONNECTIONS  
SCALE: 3/4"=1'-0"



CROSS FRAME 'C.F.6'  
SCALE: 3/4"=1'-0"



SHEAR LUG DETAIL

STEEL DETAILS  
NORDIC RD.  
OVER F.A.I. RTE 90 & F.A.P. RTE 61  
PROJECT  
SECTION 22-1HB-3  
DU PAGE COUNTY  
STATION 28+79.81

ALFRED BENESCH & COMPANY  
CONSULTING ENGINEERS  
10 S. WABASH AVE., CHICAGO, ILLINOIS

FOR INFORMATION ONLY

benesch

alfred benesch & company  
Engineers • Surveyors • Planners  
205 North Michigan Avenue, Suite 2400  
Chicago, Illinois 60601  
312.565-0450 Job No. 10032.13

SHEET NO. 18	F.A.I. RTE.	SECTION	COUNTY	TOTAL SHEETS	SHEET NO.
19 SHEETS	290	2009-1151	DUPAGE	27	23
FED. ROAD DIST. NO.			ILLINOIS FED. AID PROJECT		
CONTRACT NO. 60J34					

EXISTING PLAN INFORMATION 6 OF 7  
STRUCTURE NO. 022-0106

x:\10000s\10032\engineering-documents\contract-60j34\asn-022-0106-bloomingdale-rd\0105-60J34-018-Exstplan-06.dgn 15:49:07 03/22/2010