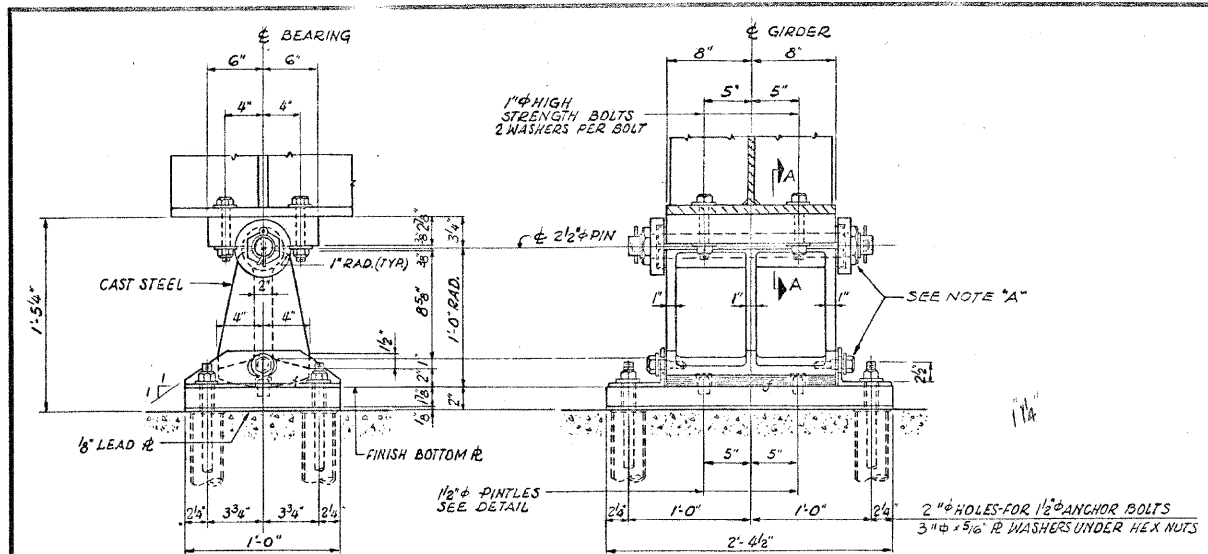


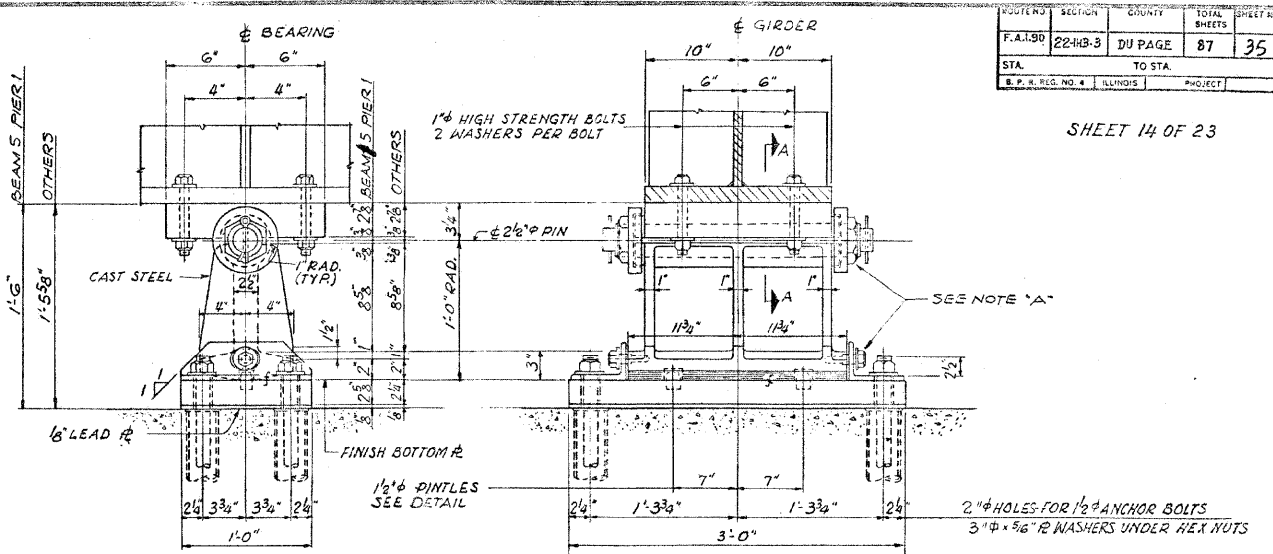
STATE OF ILLINOIS
DEPARTMENT OF TRANSPORTATION

ROUTE NO.	SECTION	COUNTY	TOTAL SHEETS	SHEET NO.
F.A.I.R.T.E.	22-11B-3	DUPAGE	87	35
STA.	TO STA.			
S. P. R. REG. NO. 4 ILLINOIS PROJECT				

SHEET 14 OF 23

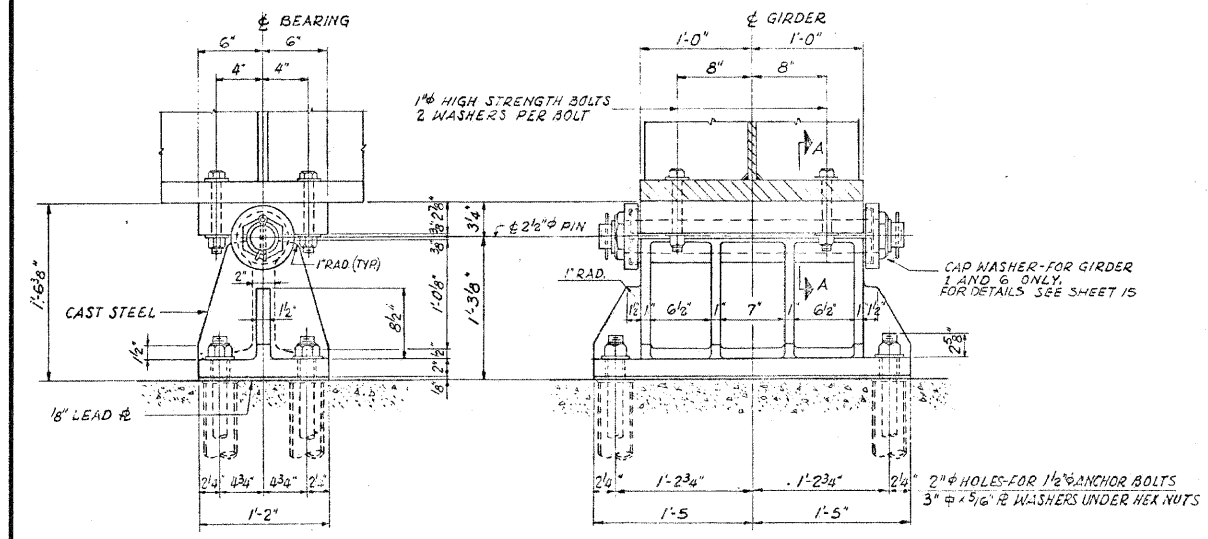


EXPANSION BEARINGS WEST ABUTMENT.
SCALE: 1/2"=1'-0"

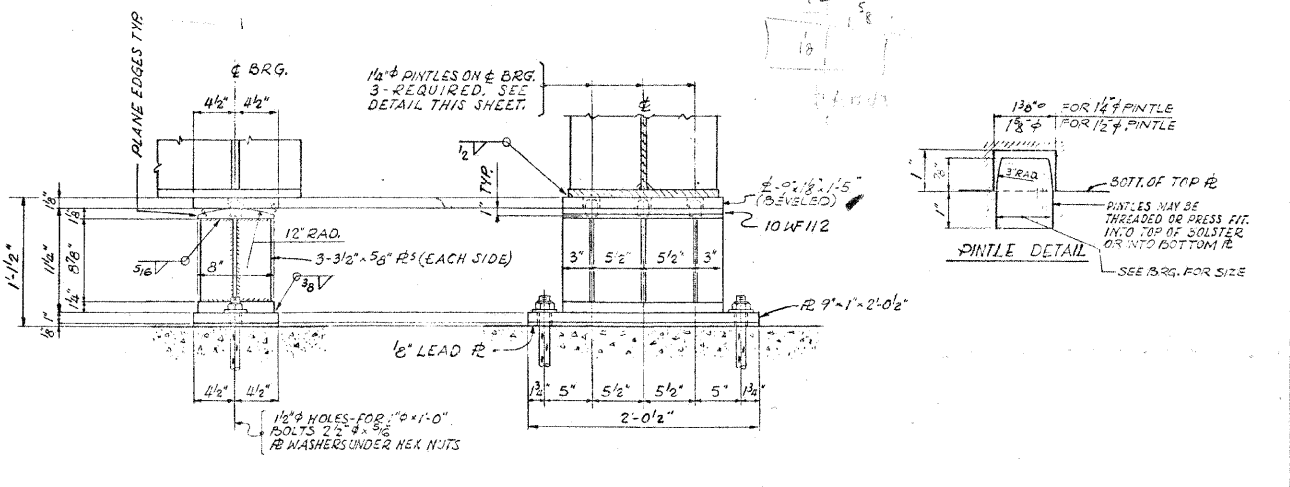


EXPANSION BEARINGS PIER 1 AND 3
SCALE: 1/2"=1'-0"

NOTE "A"
BEARING SHOWN WITH CAP WASHER ON PIN AND SHOULDER BOLT CONNECTIONS AT GIRDERS 1 & 6. OMIT CAP WASHERS, SHOULDER BOLTS & 4" x 4" x 2 L AT GIRDERS 2, 3, 4 & 5. FOR DETAILS OF PINS & SHOULDER BOLTS SEE SHEET 15



FIXED BEARINGS PIER 2
SCALE: 1/2"=1'-0"



FIXED BEARINGS EAST ABUTMENT.
SCALE: 1/2"=1'-0"

NOTE
CAST STEEL SHALL CONFORM TO A.S.T.M. A486-65, CLASS 70, NORMALIZE.
PINS SHALL BE FORGED STEEL CONFORMING TO A.S.T.M. A235, CLASS F.
PIPE SLEEVES SHALL CONFORM TO A.S.T.M. A53, TYPE E OR S, GRADE A OR B.
ALL OTHER MATERIAL SHALL CONFORM TO A.S.T.M. A36 EXCEPT AS OTHERWISE NOTED.
CASTINGS, PINTLES, BEARING PLATES, LEAD PLATES, ANCHOR BOLTS AND MISCELLANEOUS ITEMS SHALL BE FABRICATED AND SET IN ACCORDANCE WITH SECTION 507 OF THE STANDARD SPECIFICATIONS AND ARE INCLUDED IN THE QUANTITY OF STRUCTURAL STEEL. ESTIMATED WEIGHT OF BEARINGS IS 27,070 POUNDS WHICH INCLUDES 7,530 POUNDS OF CAST STEEL.

STEEL DETAILS
NORDIC RD.
OVER F.A.I.R.T.E. 90 & F.A.P.R.T.E. 61
PROJECT
SECTION 22-11B-3
DU PAGE COUNTY
STATION 28+79.81

ALFRED BENESCH & COMPANY
CONSULTING ENGINEERS
10 S. WABASH AVE. CHICAGO, ILLINOIS

FOR INFORMATION ONLY

benesch
Engineers • Surveyors • Planners
205 North Michigan Avenue, Suite 2400
Chicago, Illinois 60601
312-565-0450 Job No. 10032.13

SHEET NO. 19	F.A.I.R.T.E.	SECTION	COUNTY	TOTAL SHEETS	SHEET NO.
19 SHEETS	290	2009-1151	DUPAGE	27	24
			CONTRACT NO. 60J34		
FED. ROAD DIST. NO.		ILLINOIS FED. AID PROJECT			

EXISTING PLAN INFORMATION 7 OF 7
STRUCTURE NO. 022-0106

03\22\2010 15:49:11 x:\10000s\10032\engineering-documents-contract-60j34\sn-022-0106-bloomingdale-rd\0106-60J34-019-Existplan_07.dgn