

LEGEND

- WORK AREA
- IMPACT ATTENUATORS, TEMPORARY (FULLY REDIRECTIVE, NARROW), TEST LEVEL 3
- TYPE III BARRICADE WITH FLASHING MONODIRECTIONAL LIGHTS
- TEMPORARY CONCRETE BARRIER
- DRUM WITH STEADY BURN MONODIRECTIONAL LIGHT/DIRECTION INDICATOR BARRICADE WITH STEADY BURN MONODIRECTIONAL LIGHT (PER HWY. STD. 701431-05)
- SIGN
- DETECTOR LOOPS
- TRAFFIC SIGNAL

PRESTAGE:

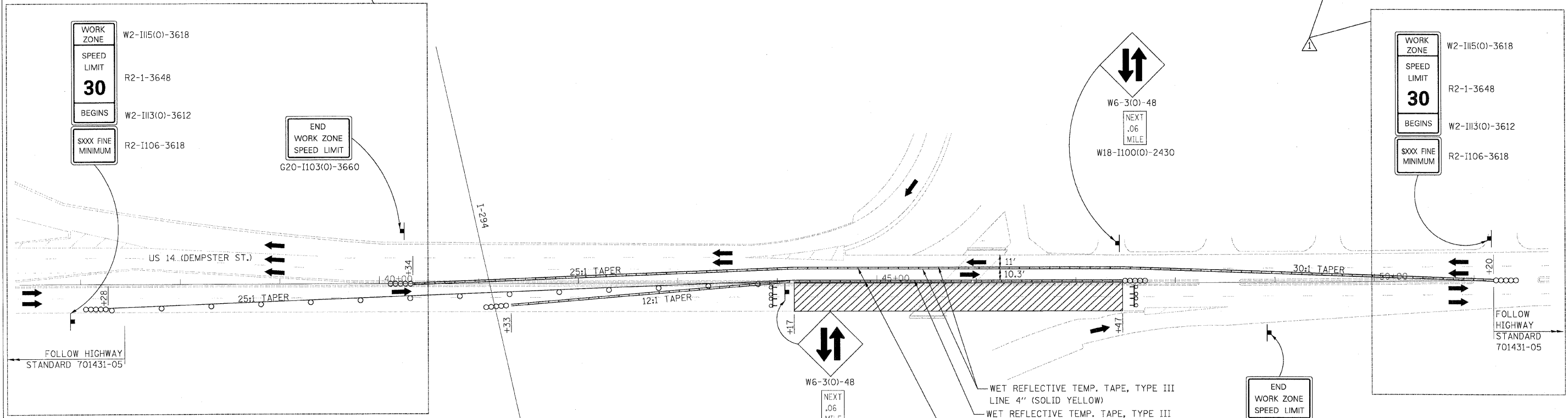
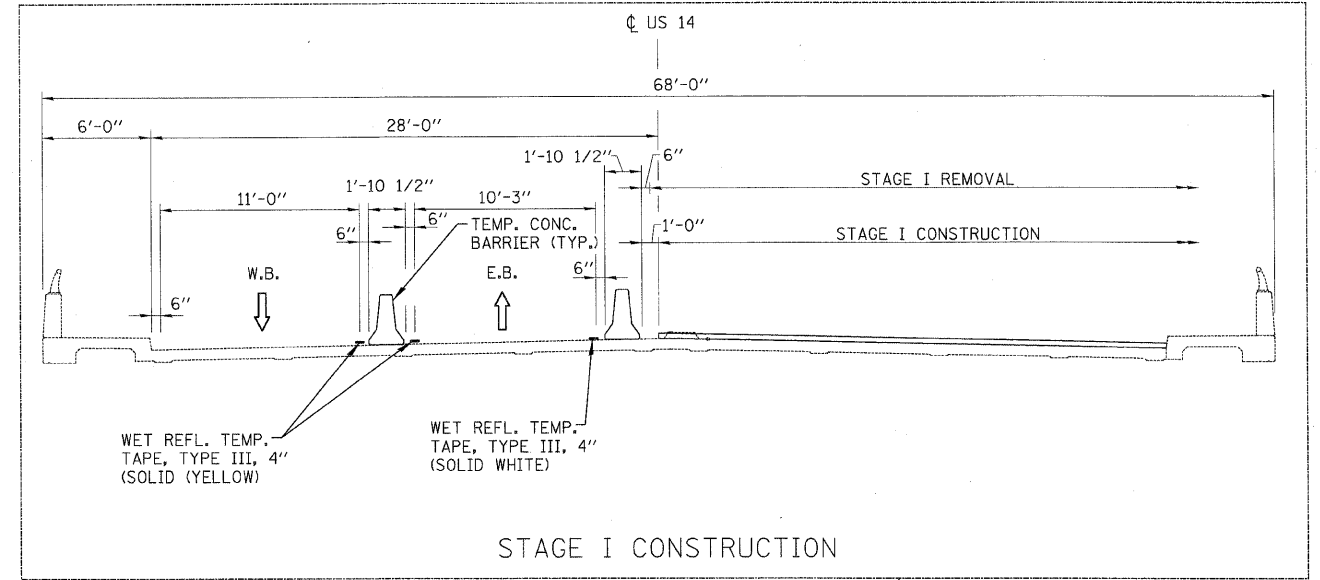
- REMOVE EXISTING MEDIAN AND PROVIDE TEMPORARY PAVEMENT FROM STA. 40+65.00 TO STA. 45+64.08, AND FROM STA. 45+98.08 TO STA. 50+75.00 PER HIGHWAY STANDARD 701602-04.
- PROVIDE FULL-DEPTH PATCH WITHIN BRIDGE LIMITS FROM STA. 45+64.08 TO STA. 45+98.08. ENSURE CURE TIME ACHIEVED PRIOR TO STAGE I TRAFFIC.

STAGE I:

- REMOVE CONFLICTING EXISTING PAVEMENT MARKING LINES AND RAISED REFLECTIVE PAVEMENT MARKERS PER HIGHWAY STANDARD 701201-03.
- CLOSE EASTBOUND LANES OF US 14 OVER FARMERS CREEK PER HIGHWAY STANDARD 701431-05 AND AS SHOWN IN THE PLANS.
- PERFORM SOUTH HALF STRUCTURAL REPAIRS AS SHOWN IN THE PLANS.

NOTES:

- ALL SIGNS SHALL BE MOUNTED WITH STEADY BURN LIGHTS AT ALL TIMES THROUGHOUT THE DURATION OF CONSTRUCTION. THE COST OF THIS WORK SHALL BE CONSIDERED AS INCLUDED IN THE CONTRACT COST PER LUMP SUM FOR "TRAFFIC CONTROL AND PROTECTION, (SPECIAL)".



FILE NAME =	USER NAME = #USER#	DESIGNED - ST	REVISED -	STATE OF ILLINOIS DEPARTMENT OF TRANSPORTATION	MAINTENANCE OF TRAFFIC - STAGE I US ROUTE 14 (DEMPSTER STREET) OVER FARMERS CREEK				F.A.U. RTE.	SECTION	COUNTY	TOTAL SHEETS	SHEET NO.	
#FILE#		DRAWN - ST	REVISED -		SCALE: 1"=50'	SHEET NO.	OF	SHEETS	STA.	TO STA.	1324	3014-I	COOK	19 4
		CHECKED - FML	REVISED -									CONTRACT NO. 60J40		
		DATE - 12/2009	REVISED -								FED. ROAD DIST. NO.	ILLINOIS FED. AID PROJECT		

