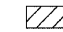
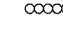
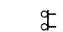





LEGEND

-  WORK AREA
-  IMPACT ATTENUATORS, TEMPORARY (FULLY REDIRECTIVE, NARROW), TEST LEVEL 3
-  TYPE III BARRICADE WITH FLASHING MONODIRECTIONAL LIGHTS
-  TEMPORARY CONCRETE BARRIER
-  DRUM WITH STEADY BURN MONODIRECTIONAL LIGHT/DIRECTION INDICATOR BARRICADE WITH STEADY BURN MONODIRECTIONAL LIGHT (PER HWY. STD. 701431-05)
-  SIGN

STAGE II

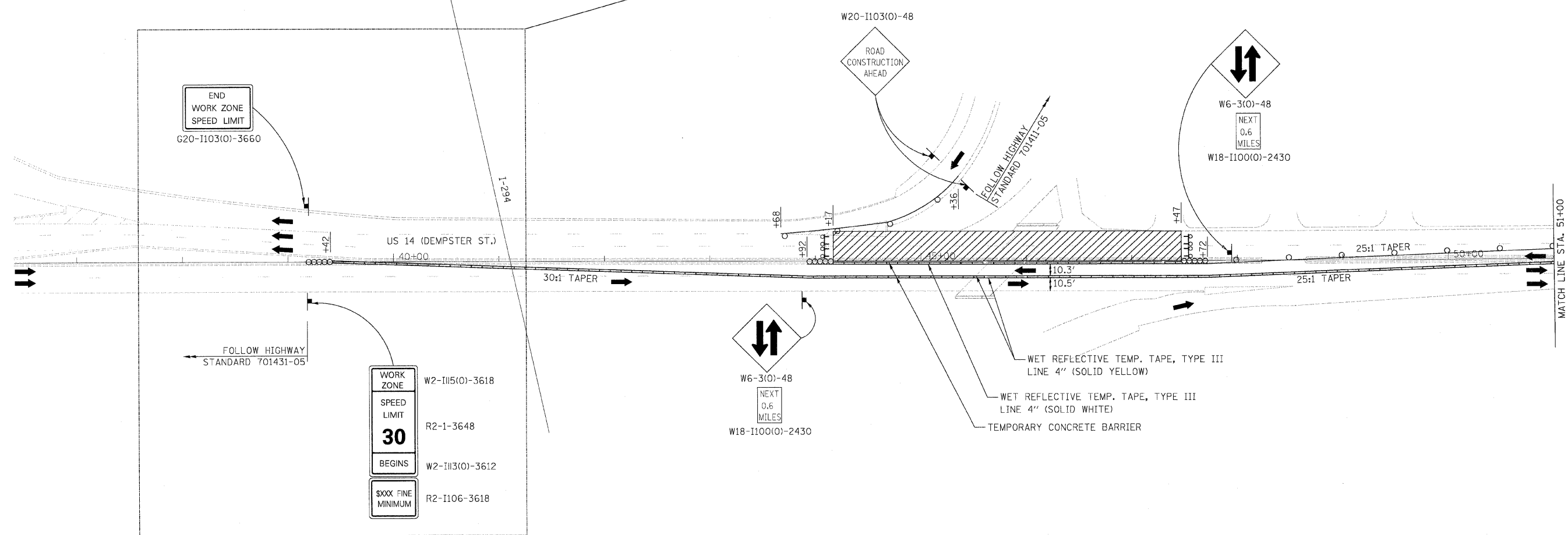
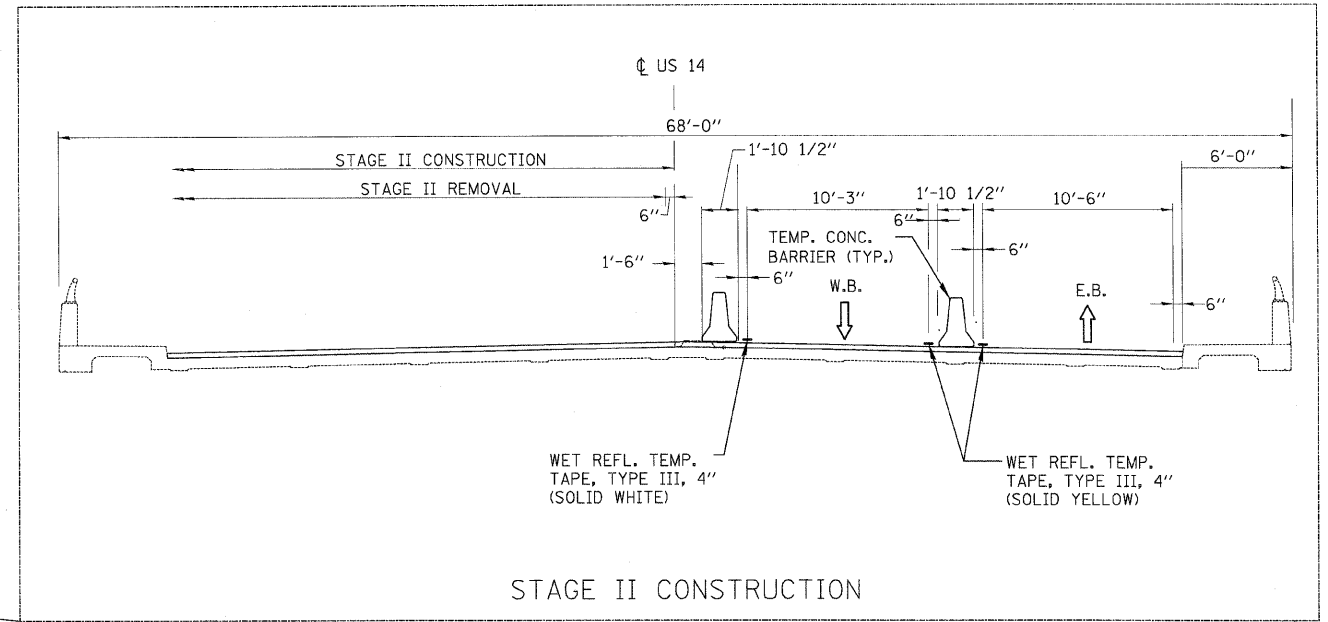
1. CLOSE WESTBOUND LANES OF US 14 OVER FARMERS CREEK PER HIGHWAY STANDARD 701431-05 AND AS SHOWN IN THE PLANS.
2. PERFORM NORTH HALF STRUCTURAL REPAIRS AS SHOWN IN THE PLANS.

STAGE III

1. REMOVE TEMPORARY PAVEMENT AND CONSTRUCT PROPOSED MEDIAN BETWEEN STA. 40+65.00 AND STA. 50+75.00 PER HIGHWAY STANDARD 701602-04.
2. APPLY PERMANENT PAVEMENT MARKING AND RAISED REFLECTIVE PAVEMENT MARKERS UNDER HIGHWAY STANDARD 701311-03.

NOTES

1. ALL SIGNS SHALL BE MOUNTED WITH STEADY BURN LIGHTS AT ALL TIMES THROUGHOUT THE DURATION OF CONSTRUCTION. THE COST OF THIS WORK SHALL BE CONSIDERED AS INCLUDED IN THE CONTRACT COST PER LUMP SUM FOR "TRAFFIC CONTROL AND PROTECTION, (SPECIAL)".



FILE NAME =	USER NAME = #USER#	DESIGNED - ST	REVISED -
#FILE#		DRAWN - ST	REVISED -
	PLOT SCALE = #SCALE#	CHECKED - FML	REVISED -
	PLOT DATE = #DATE#	DATE - 12/2009	REVISED -

**STATE OF ILLINOIS
DEPARTMENT OF TRANSPORTATION**

**MAINTENANCE OF TRAFFIC - STAGE II, SHEET I
US ROUTE 14 (DEMPSTER STREET) OVER FARMERS CREEK**

SCALE: 1"=50' SHEET NO. OF SHEETS STA. TO STA.

F.A.U. RTE.	SECTION	COUNTY	TOTAL SHEETS	SHEET NO.
1324	3014-I	COOK	19	5
FED. ROAD DIST. NO. [ILLINOIS] FED. AID PROJECT			CONTRACT NO. 60J40	