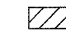
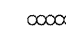
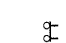

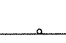

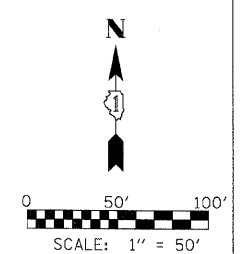
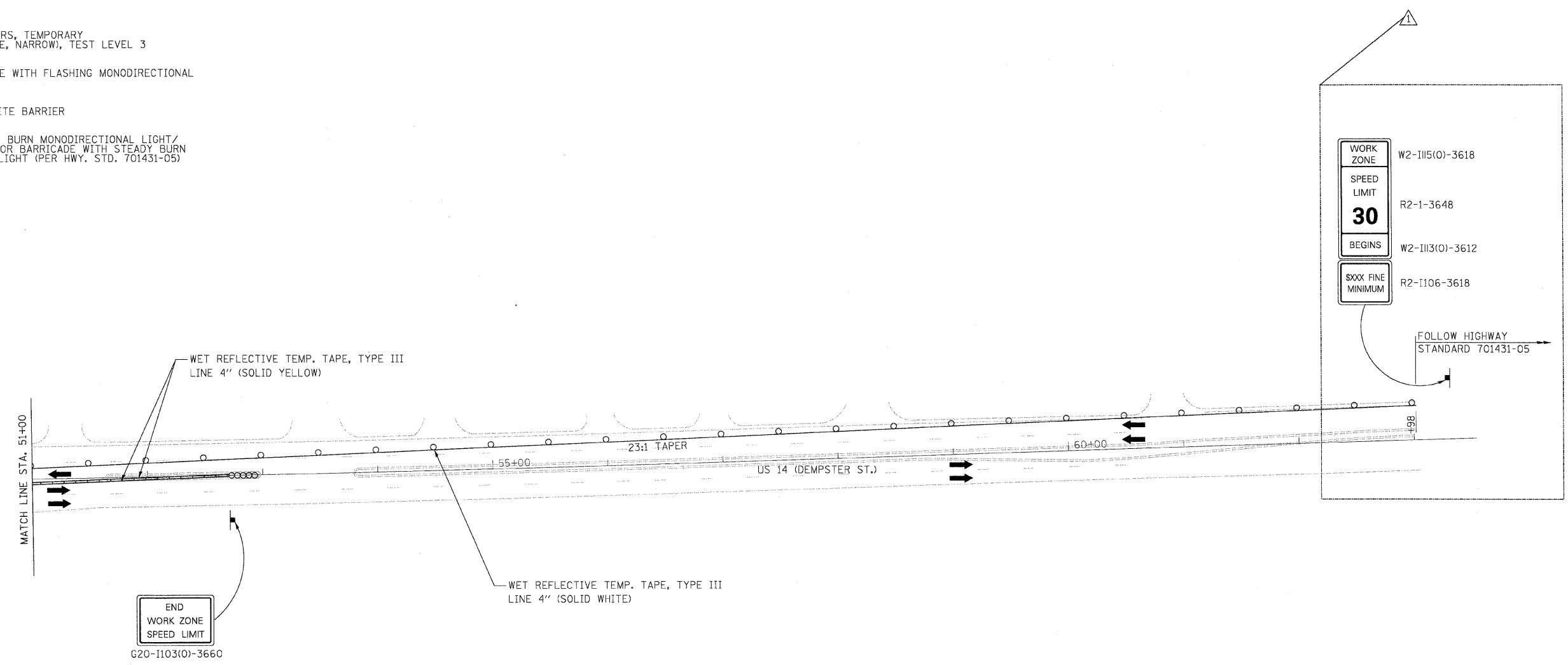


LEGEND

-  WORK AREA
-  IMPACT ATTENUATORS, TEMPORARY (FULLY REDIRECTIVE, NARROW), TEST LEVEL 3
-  TYPE III BARRICADE WITH FLASHING MONODIRECTIONAL LIGHTS
-  TEMPORARY CONCRETE BARRIER
-  DRUM WITH STEADY BURN MONODIRECTIONAL LIGHT / DIRECTION INDICATOR BARRICADE WITH STEADY BURN MONODIRECTIONAL LIGHT (PER HWY. STD. 701431-05)
-  SIGN



FILE NAME =	USER NAME = #USER#	DESIGNED - ST	REVISED - ^	STATE OF ILLINOIS DEPARTMENT OF TRANSPORTATION	MAINTENANCE OF TRAFFIC - STAGE II, SHEET II US ROUTE 14 (DEMPSTER STREET) OVER FARMERS CREEK	F.A.U. RTE. 1324	SECTION 3014-I	COUNTY COOK	TOTAL SHEETS 19	SHEET NO. 6	
#FILE#	PLOT SCALE = #SCALE#	CHECKED - FML	REVISED -			SCALE: 1"=50'	SHEET NO. OF SHEETS STA. TO STA.	CONTRACT NO. 60J40			
	PLOT DATE = #DATE#	DATE - 12/2009	REVISED -			FED. ROAD DIST. NO. [ILLINOIS] FED. AID PROJECT					