

F.A.P. RTE.	SECTION	COUNTY	TOTAL SHEETS	SHEET NO.
360	49 B-1	KANE	18	1
FED. ROAD DIST. NO.		ILLINOIS	CONTRACT NO. 60J47	

D-91-237-10

STATE OF ILLINOIS
DEPARTMENT OF TRANSPORTATION
DIVISION OF HIGHWAYS

**PLANS FOR PROPOSED
FEDERAL AID HIGHWAY**

(F.A.P. ROUTE 360) IL ROUTE 25
OVER POPLAR CREEK (0.4 MI SOUTH OF US 20)

SECTION: 49 B-1
KANE COUNTY PROJECT: F-0360(013)
C-91-237-10
BRIDGE REHABILITATION PROJECT
SN 045-5000

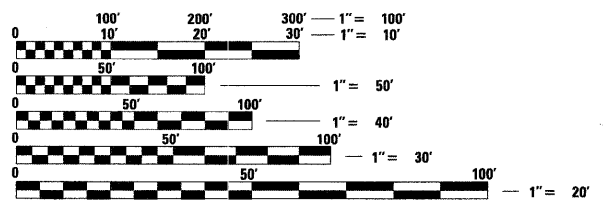


PROJECT LOCATED ADJACENT TO THE
CITY OF BARTLETT, IN THE CITY OF ELGIN

FOR INDEX OF SHEETS, SEE SHEET NO. 2

DESIGN DESIGNATION
MINOR ARTERIAL

ADT 13000 (2000)
POSTED SPEED LIMIT 35 MPH

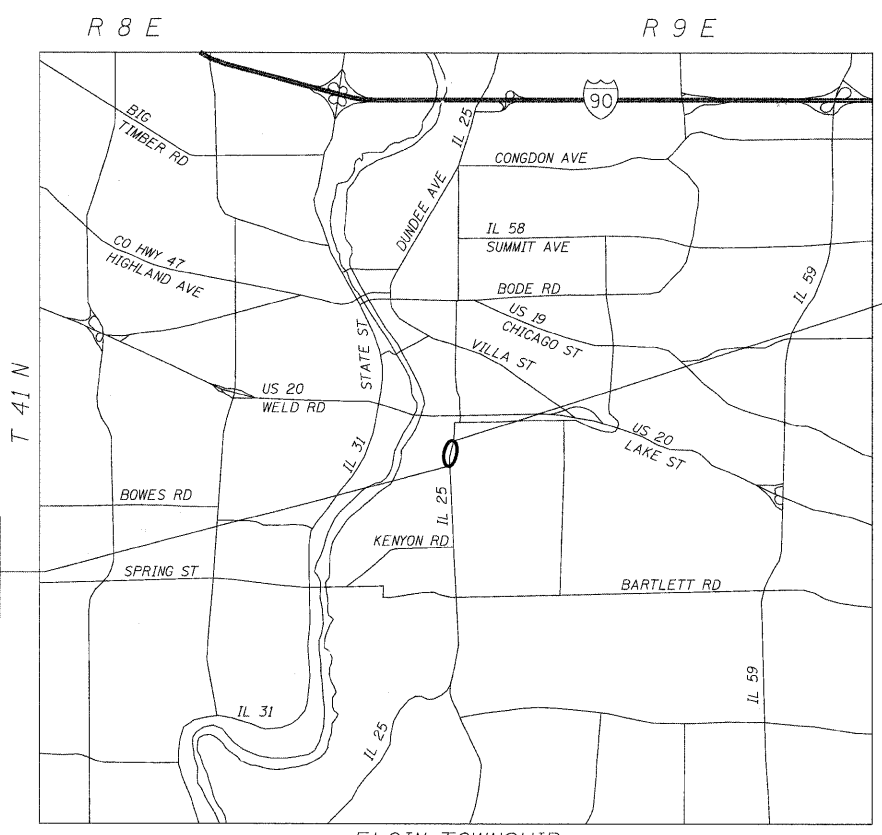


FULL SIZE PLANS HAVE BEEN PREPARED USING STANDARD
ENGINEERING SCALES. REDUCED SIZED PLANS WILL NOT
CONFORM TO STANDARD SCALES. IN MAKING MEASUREMENTS
ON REDUCED PLANS, THE ABOVE SCALES MAY BE USED.

J.U.L.I.E.
JOINT UTILITY LOCATION INFORMATION FOR EXCAVATION
1-800-892-0123
OR 811

PROJECT MANAGER: KIM HARVEY (847) 705-4055
PROJECT ENGINEER: ERSKINE W. KLYCE (847) 705-4594

CONTRACT NO. 60J47



PROJECT BEGINS
STA. 365+14.15

PROJECT ENDS
STA. 365+68.01

ELGIN TOWNSHIP
LOCATION MAP

NET AND GROSS LENGTH OF PROJECT = 53.86' = 0.010 MI

STATE OF ILLINOIS
DEPARTMENT OF TRANSPORTATION
DIVISION OF HIGHWAYS

SUBMITTED JANUARY 28, 2010

Diana M. O'Keefe
DEPUTY DIRECTOR OF HIGHWAYS, REGION ENGINEER

March 19, 2010
Scott E. Stitt, P.E.
Acting ENGINEER OF DESIGN AND ENVIRONMENT

March 19, 2010
Christie M. Reed
DIRECTOR OF HIGHWAYS, CHIEF ENGINEER

PRINTED BY THE AUTHORITY
OF THE STATE OF ILLINOIS

LOWCO, INC.
CONSULTING ENGINEERS
1560 WALL ST., SUITE 222
NAPERVILLE, ILLINOIS 60563 PH: (630) 577-9100

Walter W. Walker
REGISTERED PROFESSIONAL ENGINEER
ILLINOIS 081-005150
Ex. 11/30/11 Ex. 11/30/10