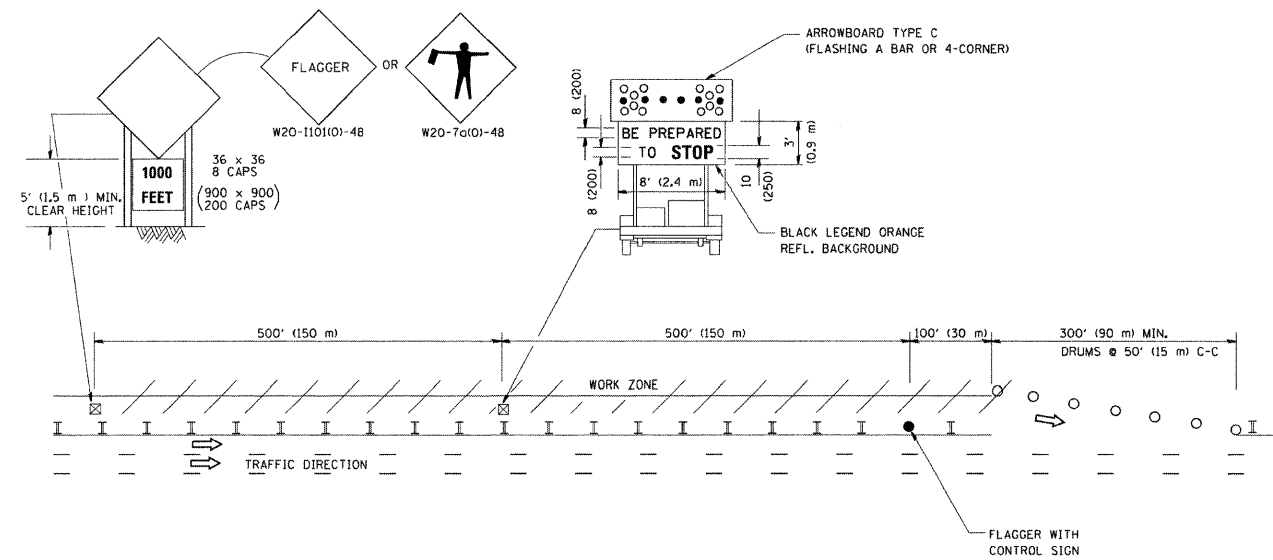
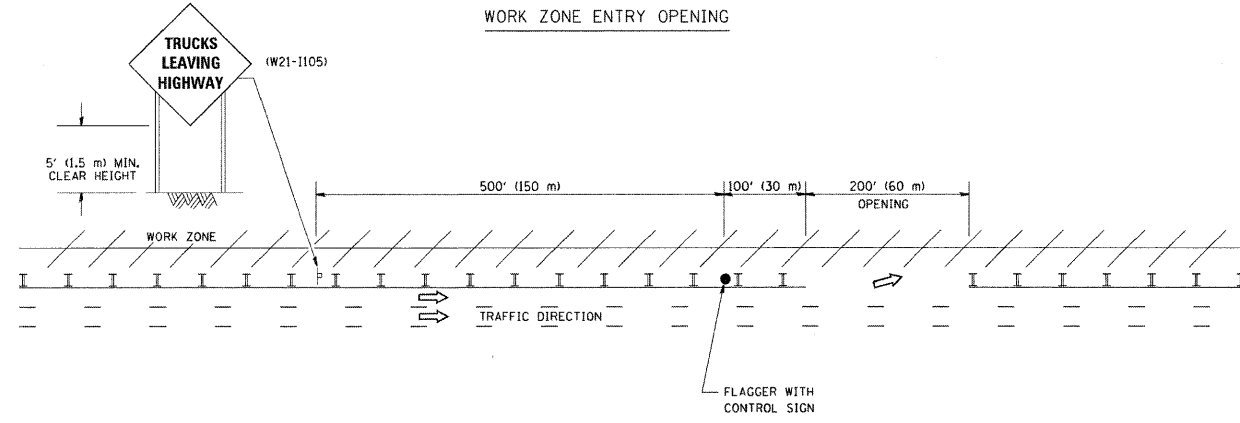


SIGNING FOR FLAGGING OPERATIONS AT WORK ZONE OPENINGS

WORK ZONE EXIT OPENING



WORK ZONE ENTRY OPENING



NOTES:

1. The Arrowboard, the Flagger Ahead trailer mounted sign, and the Trucks Leaving Highway sign shall be removed or turned away from traffic and the exit and entry openings shall be closed when the flagging operation ceases.
2. Work Zone Exit Openings should be a minimum of one half mile apart.
3. Exiting the work zone at any place other than at a Work Zone Exit Opening will be prohibited.
4. All vehicles shall enter the work zone at entry openings, using their turn signals to warn motorists

REVISED	-	D.W.S. 08-98
REVISED	-	J.A.F. 04-03
REVISED	-	J.A.F. 02-06
REVISED	-	S.P.B. 01-07

ALL DIMENSIONS ARE IN INCHES (MILLIMETERS) UNLESS OTHERWISE SHOWN

SIGNING FOR FLAGGING OPERATIONS AT WORK ZONE OPENINGS

LOWCO, INC.
CONSULTING ENGINEERS
1560 WALL ST., SUITE 222
NAPERVILLE, ILLINOIS 60563 PH: 630/577-9100

USER NAME = #USER#	DESIGNED - MJY	
	DRAWN - ST, TSC	REVISED -
PLOT SCALE = #SCALE#	CHECKED - MJY	REVISED -
PLOT DATE = #DATE#	DATE - 1/29/2010	REVISED -

STATE OF ILLINOIS
DEPARTMENT OF TRANSPORTATION

DISTRICT ONE DETAIL SHEETS
IL ROUTE 25 OVER POPLAR CREEK
SCALE: NONE SHEET NO. 17 OF 18 SHEETS STA. 365+14.15 TO STA. 365+68.01

F.A.P. RTE. 360	SECTION 49 B-1	COUNTY KANE	TOTAL SHEETS 18	SHEET NO. 17
D-91-237-10			CONTRACT NO. 60J47	
FED. ROAD DIST. NO. ILLINOIS FED. AID PROJECT				