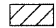
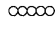
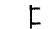

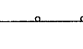





LEGEND

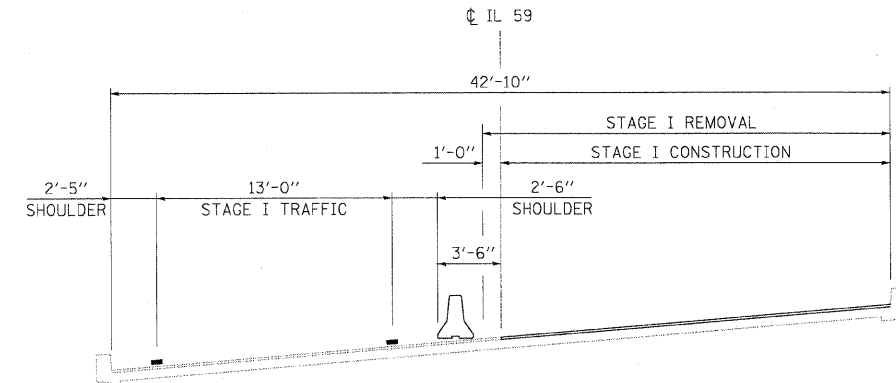
-  WORK AREA
-  IMPACT ATTENUATORS, TEMPORARY (FULLY REDIRECTIVE, NARROW), TEST LEVEL 3
-  TYPE III BARRICADE
-  TEMPORARY CONCRETE BARRIER
-  DRUM WITH STEADY BURN MONODIRECTIONAL LIGHT/DIRECTION INDICATOR BARRICADE WITH STEADY BURN MONODIRECTIONAL LIGHT (PER HWY. STD. 701401-05)
-  SIGN
-  DETECTOR LOOPS
-  TRAFFIC SIGNAL

STAGE I CONSTRUCTION:

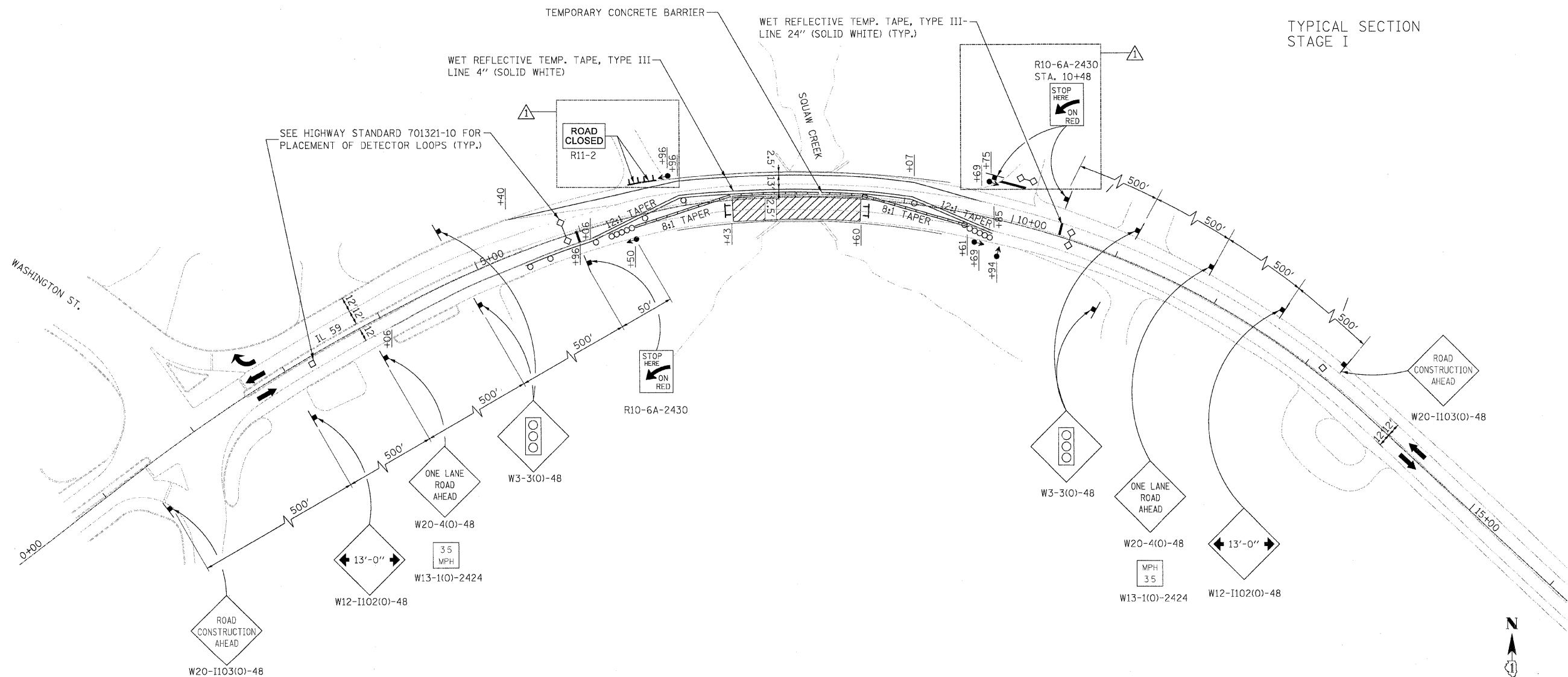
1. REMOVE CONFLICTING EXISTING PAVEMENT MARKING LINES AND REFLECTORS UNDER HIGHWAY STANDARD 701201-03.
2. CLOSE THE DRIVEWAY AT STA. 6+76.68 LT, FOR THE DURATION OF THE PROJECT.
3. CLOSE SOUTH HALF OF IL ROUTE 59 IN ACCORDANCE WITH HIGHWAY STANDARD 701321-10 AND AS SHOWN IN THE PLANS.
4. PERFORM SOUTH HALF STRUCTURAL AND APPROACH ROADWAY REPAIRS AS SHOWN IN THE PLANS.
5. REMOVE AND RELOCATE TEMP. SIGNALS, DETECTOR LOOPS, STOP BARS AND SIGNS PER STAGING PLANS.

NOTES:

1. ALL SIGNS SHALL BE MOUNTED WITH STEADY BURN LIGHTS AT ALL TIMES THROUGHOUT THE DURATION OF CONSTRUCTION.
2. "ROAD CONSTRUCTION AHEAD" SIGNS SHALL BE PLACED AT WASHINGTON STREET AT 200' AND 700' FROM THE INTERSECTION WITH IL ROUTE 59 AT BOTH NORTH AND SOUTH APPROACHES.
3. THE COST OF PROVIDING FOR MAINTENANCE OF TRAFFIC AS NOTED ABOVE AND FOR ALL WORK AS SHOWN IN THE PLANS, INCLUDING FROM STA. 66+30 TO STA. 110+50, SHALL BE CONSIDERED AS INCLUDED IN THE CONTRACT COST PER LUMP SUM FOR "TRAFFIC CONTROL AND PROTECTION, (SPECIAL)".



TYPICAL SECTION STAGE I



FILE NAME =	USER NAME = #USER#	DESIGNED - ST	REVISED -	STATE OF ILLINOIS DEPARTMENT OF TRANSPORTATION	MAINTENANCE OF TRAFFIC - STAGE I IL ROUTE 59 OVER SQUAW CREEK			F.A.P. RTE.	SECTION	COUNTY	TOTAL SHEETS	SHEET NO.
#FILE#		DRAWN - ST	REVISED -		SCALE: 1"=50'	SHEET NO. OF SHEETS	STA. TO STA.	104	W-EXT-1	LAKE	21	5
		CHECKED - FML	REVISED -					CONTRACT NO. 60J52				
		DATE - 12/2009	REVISED -					ILLINOIS FED. AID PROJECT				