
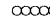

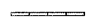
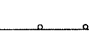





LEGEND

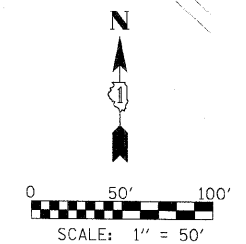
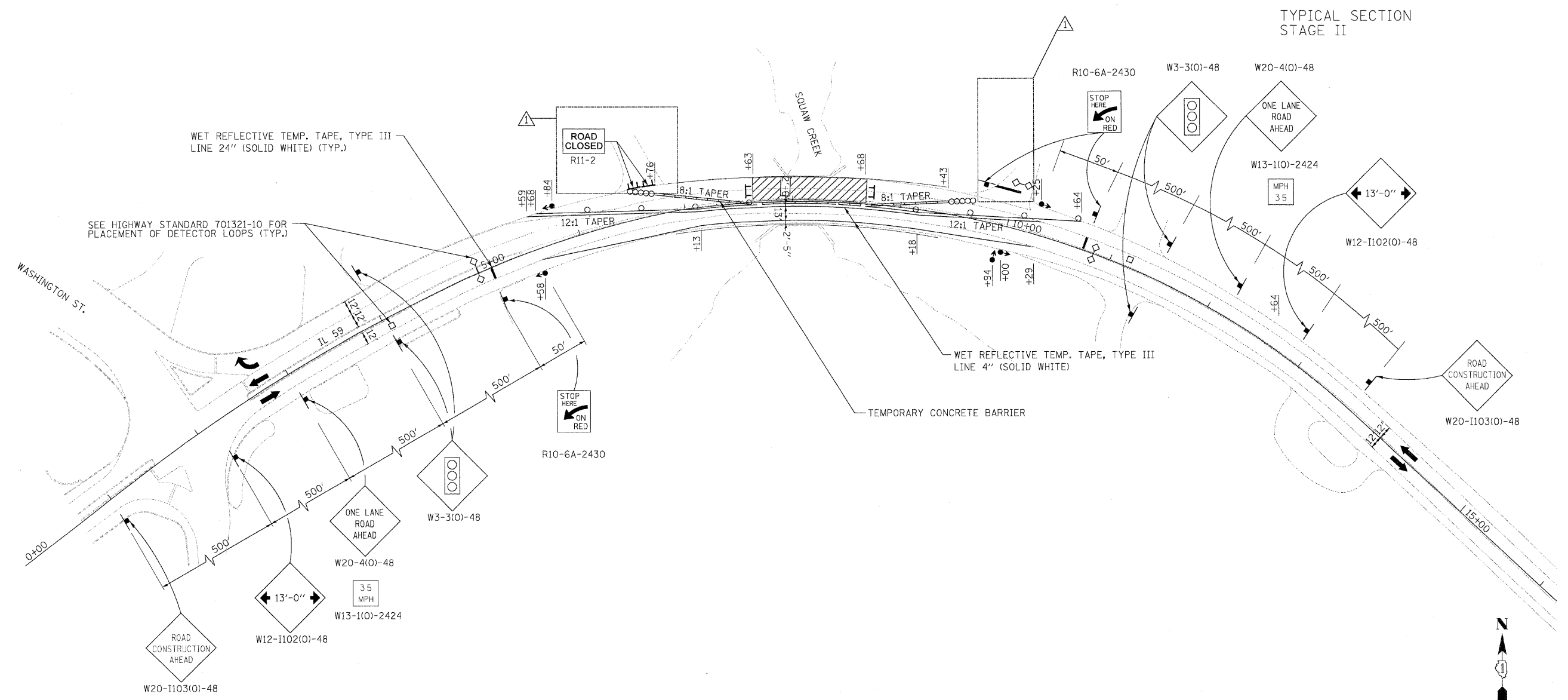
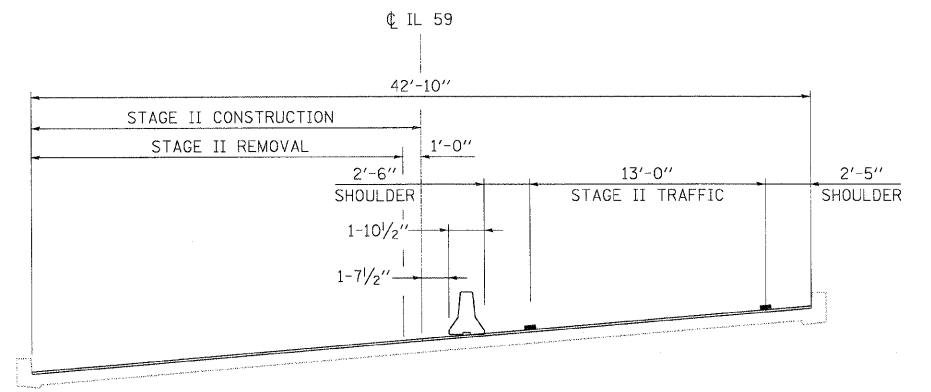
-  WORK AREA
-  IMPACT ATTENUATORS, TEMPORARY (FULLY REDIRECTIVE, NARROW), TEST LEVEL 3
-  TYPE III BARRICADE
-  TEMPORARY CONCRETE BARRIER
-  DRUM WITH STEADY BURN MONODIRECTIONAL LIGHT / DIRECTION INDICATOR BARRICADE WITH STEADY BURN MONODIRECTIONAL LIGHT (PER HWY. STD. 701321-10)
-  SIGN
-  DETECTOR LOOPS
-  TRAFFIC SIGNAL

STAGE II CONSTRUCTION:

1. CLOSE NORTH HALF OF IL ROUTE 59 IN ACCORDANCE WITH HIGHWAY STANDARD 701321-10 AND AS SHOWN IN THE PLANS.
2. PERFORM NORTH HALF STRUCTURAL AND APPROACH ROADWAY REPAIRS AS SHOWN IN THE PLANS.
3. APPLY PERMANENT PAVEMENT MARKINGS AND RAISED REFLECTIVE PAVEMENT MARKER, REPLACEMENT REFLECTORS UNDER HIGHWAY STANDARD 701311-03.

NOTES:

1. ALL SIGNS SHALL BE MOUNTED WITH STEADY BURN LIGHTS AT ALL TIMES THROUGHOUT THE DURATION OF CONSTRUCTION.
2. "ROAD CONSTRUCTION AHEAD" SIGNS SHALL BE PLACED AT WASHINGTON STREET AT 200' AND 700' FROM THE INTERSECTION WITH IL ROUTE 59 AT BOTH NORTH AND SOUTH APPROACHES.
3. THE COST OF PROVIDING FOR MAINTENANCE OF TRAFFIC AS NOTED ABOVE AND FOR ALL WORK AS SHOWN IN THE PLANS, INCLUDING FROM STA. 66+30 TO STA. 110+50, SHALL BE CONSIDERED AS INCLUDED IN THE CONTRACT COST PER LUMP SUM FOR "TRAFFIC CONTROL AND PROTECTION, (SPECIAL)".



FILE NAME =	USER NAME = #USER#	DESIGNED - ST	REVISED - ^	STATE OF ILLINOIS DEPARTMENT OF TRANSPORTATION	MAINTENANCE OF TRAFFIC - STAGE II IL ROUTE 59 OVER SQUAW CREEK				F.A.P. RTE. 104	SECTION W-EXT-1	COUNTY LAKE	TOTAL SHEETS 21	SHEET NO. 6
#FILE#		DRAWN - ST	REVISED -		SCALE: 1"=50'	SHEET NO. OF	SHEETS	STA. TO STA.	CONTRACT NO. 60J52				
		CHECKED - FML	REVISED -						ILLINOIS FED. AID PROJECT				
		DATE - 12/2009	REVISED -						FED. ROAD DIST. NO.				